

## QW1 Wall Box

- Available in 6U, 9U, 12U, 15U & 18U heights
- Available in 450mm, 550mm & 600mm depths
- 19" front & rear vertical profiles
- Lockable front glass door with air vents
- Open rear design
- Door can be hinged on left or right
- Earthing point
- Lockable & removable side panels
- Front, rear & top vented slots for improved air flow
- Top & bottom cable entry
- Cage nuts supplied
- Powdered coated finish – RAL9004 (Black)
- Flat pack option available



The QW1 Wall Boxes are available in 6U, 9U, 12U, 15U and 18U heights with optional depths of 450mm, 550mm, and 600mm.

Designed with security and flexibility in mind, we have added two key features which benefits both the installer and end user. For security we have added locks to both the removable side panels and for flexibility we have based our design around an open back which gives the installer more options for cable entry.

The QW1 Wall Box comes supplied with a lockable toughened glass front door which can be hinged on either side of the wall box.

Each wall box comes complete with a front and rear set of adjustable 19" vertical panel mounts and a vented section in the roof to house a specially deigned roof mounted fan unit.

The QW1 Wall Box can be supplied flat packed which is useful for transportation and storage.



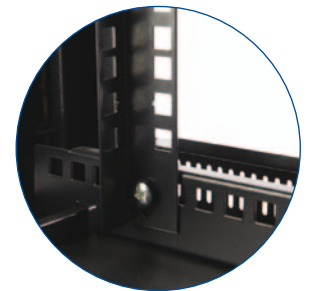
One Man Mounting Panel



Lockable, Removable Side Panels



Printed "U" Markers, Front & Rear

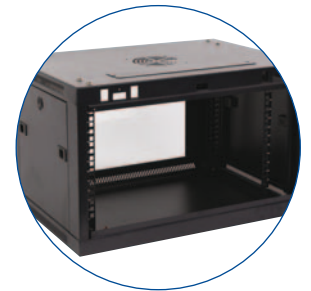


4 x Adjustable 19" Panel Mounts

**Flat Pack Option**



Top & Bottom Cable Entry With Gland Plate



Open Back

|       | 6U     |        | 9U     |        | 12U     |        | 15U     |        | 18U     |        |
|-------|--------|--------|--------|--------|---------|--------|---------|--------|---------|--------|
|       | QU6450 |        | QU9450 |        | QU12450 |        | QU15450 |        | QU18450 |        |
| 450mm | Height | Weight | Height | Weight | Height  | Weight | Height  | Weight | Height  | Weight |
|       |        | 370mm  | 15kg   | 502mm  | 18kg    | 637mm  | 22kg    | 770mm  | 26kg    | 903mm  |

|       | QU6550 |        | QU9550 |        | QU12550 |        | QU15550 |        | QU18550 |        |
|-------|--------|--------|--------|--------|---------|--------|---------|--------|---------|--------|
| 550mm | Height | Weight | Height | Weight | Height  | Weight | Height  | Weight | Height  | Weight |
|       |        | 370mm  | 15.7kg | 502mm  | 18.7kg  | 637mm  | 22.7kg  | 770mm  | 26.7kg  | 903mm  |

|       | QU6600 |        | QU9600 |        | QU12600 |        | QU15600 |        | QU18600 |        |
|-------|--------|--------|--------|--------|---------|--------|---------|--------|---------|--------|
| 600mm | Height | Weight | Height | Weight | Height  | Weight | Height  | Weight | Height  | Weight |
|       |        | 370mm  | 17kg   | 502mm  | 20kg    | 637mm  | 24kg    | 770mm  | 28kg    | 903mm  |