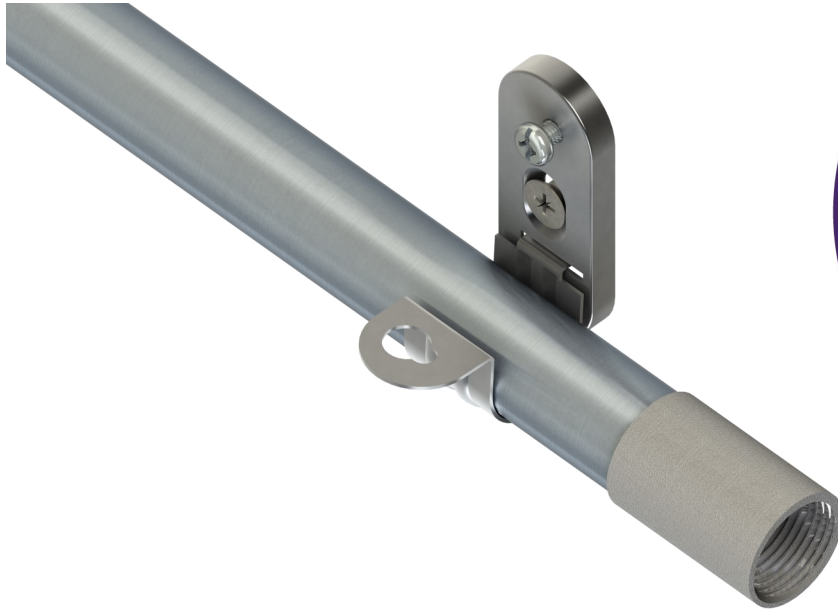




Rapid Fast Fix Saddle Clips



The CMW Ltd *RAPID SADDLE* offers Installers an innovative, quick fix alternative to its more traditional counterparts with the registered design manufactured in accordance with BS EN 61386-1:2008.

Rapid Saddles unique hinge allows for a single installer to carry out the job safely and efficiently, even at height, with significant reductions in both labour installation and costs.

Rapid Saddles are made from Pressed Steel and finished in BZP The Salt Spray Tested Saddles for exterior use are Pressed Steel and finished in Delta Protekt to achieve this.

Both Saddles have a 5mm Base which gives the same clearance as a standard distance saddle, making it ideal for uneven surfaces.



Fast Fix Saddles

CODE	DESCRIPTION	UNIT	UNIT PRICE
GCSCR20	20mm Fast Fix Rapid Saddle	each	0.24
GCSCR25	25mm Fast Fix Rapid Saddle	each	0.36

The below are for external use and have been Salt Spray Tested in the UK

PROTEKT20	20mm SST Fast Fix Protekt Saddle	each	0.39
PROTEKT25	25mm SST Fast Fix Protekt Saddle	each	0.49