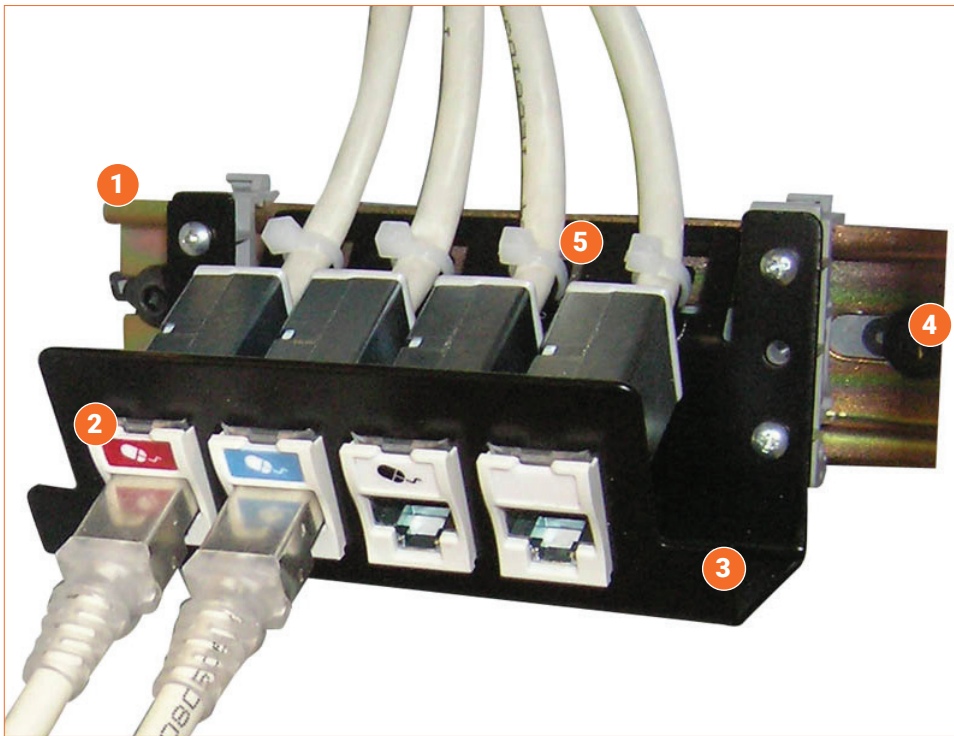


# DIN Rail Mounted Patch Panels

Regional Availability – Global



DIN Rail Mounted Patch Panels provide an effective solution for industrial networks inside control panels and distribution cabinets where DIN mounted equipment is used. The modular design accommodates copper, fiber and multi-media modules to support most applications. The low-profile angled design minimizes cable bend radius in shallow enclosures where space is a premium and can be side stackable to grow with your networking changes. The shielded version offers a solution when the panel needs to be grounded in applications where copper meets fiber cabling. It accommodates any shielded Category 6A, 7 or 8 twisted pair copper, connecting permanent cable to patch cords.



## 1. Angled Design for Low-Profile Cable Routing

### 2. Multiple Options

Available for mounting of MAX®, UltraMAX®, Z-MAX® and TERA® outlets as well as RIC fiber adapter plates.

### 3. Ruggeded

Rugged 16 gauge steel construction with a durable black powder finish.

## 4. Mounting Clips

Compatible with standard 35mm DIN rails.

## 5. Strain Relief

Cable strain relief to secure and protect connection points.



## Applications

- Inside equipment cabinets with DIN rails
- Alongside Industrial Ethernet switches and PLC's

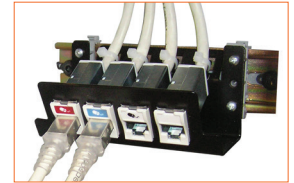
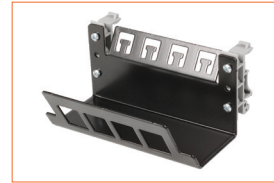
## Standards Compliance

- European Standard EN 50022
- IEC International Standard 60715

# Ordering Information

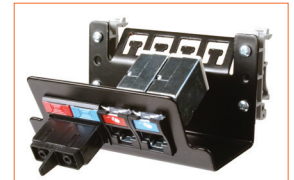
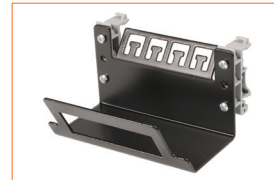
## 4-Port DIN Rail Patch Panel

Part Number	Description
DIN-PNL-04-01	Black with individual port openings, Includes (4) cable ties



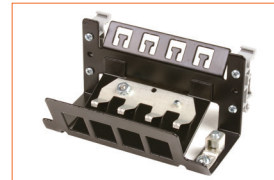
## DIN Rail Patch Panel

Part Number	Description
DIN-PNL-04W-01	Black with single opening, Includes (4) cable ties



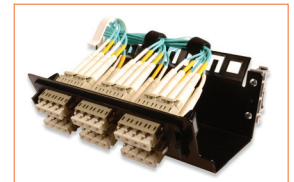
## Shielded 4-Port DIN Rail Patch Panel

Part Number	Description
DIN-PNLS-04-01	Black with discrete openings, Includes (4) cable ties and ground lug sub-assembly



## RIC Adapter DIN Rail Patch Panel

Part Number	Description
DIN-PNL-RIC-01	Black with a single RIC adapter plate opening, Includes (4) cable ties and (2) fiber management clips



## Z-MAX® and UltraMAX® Outlets

Z-MAX copper outlets, available in Category 5e and 6A shielded outlet and Category 6A and 7A TERA. Category 6 and 6A UTP Z-MAX and UltraMAX versions, feature unparalleled performance and the fastest termination in the industry.



Z-MAX



UltraMAX

## Quick-Pack® Adapter Plates

Quick-Pack adapter plates offer an integrated latch, providing single-finger access to fiber in fully populated enclosures. Available in LC and SC fiber versions.



Because we continuously improve our products, Siemon reserves the right to change specifications and availability without prior notice.

**North America**  
P: (1) 860 945 4200

**Asia Pacific**  
P: (61) 2 8977 7500

**Latin America**  
P: (571) 657 1950/51/52

**Europe**  
P: (44) 0 1932 571771

**China**  
P: (86) 215385 0303

**India, Middle East & Africa**  
P: (971) 4 3689743

**Siemon Interconnect Solutions**  
P: (1) 860 945 4213  
[www.siemon.com/SIS](http://www.siemon.com/SIS)

**Mexico**  
P: (521) 556 387 7708/09/10