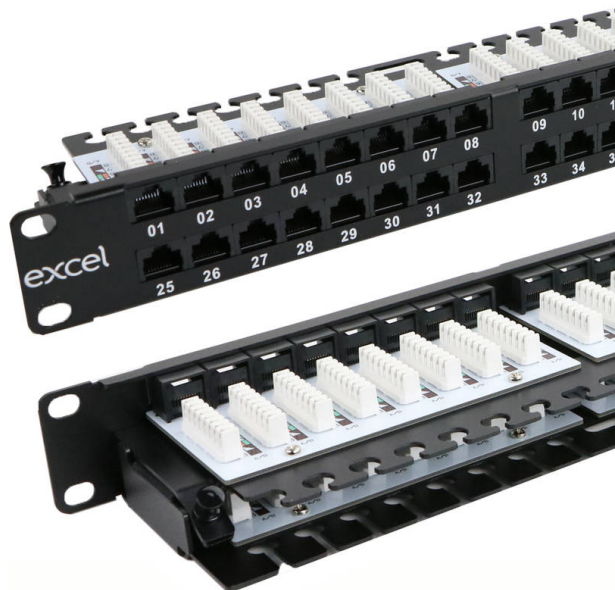


# Excel Cat5e 48 Port Unscreened Patch Panel Right-Angled 1U LSA Punch Down Black

Item Code: 100-497

**excel**  
without compromise.



✕ Category 5e

✕ Supports Gigabit Ethernet

✕ Cage nuts and mini cable ties included

✕ LSA Style Termination Blocks

✕ T568A/B Wiring Configuration

✕ 25 Year system warranty

## Product Overview

Excel Category 5e Patch Panels comply with the current standards for enhanced Category 5. Ease of installation is assured with built in rear cable management at a 90° angle to the panel facia.

The 48 Port Patch Panel features a removable 'upper deck' arrangement to ensure ease of termination of the cables. This tray also holds the LSA termination blocks. Cage nuts and mini cable ties are included with each panel.

## Product Specifications

Feature	Values
Number of ports - loaded	48
Type of connector	RJ45 8(8)
Shielded	no
Category	5E
Connection type	LSA
Number of rack units (RU)	1
Colour	Black
Mounting method	482.6 mm (19 inch) mounting
Height	44 mm
Width	480 mm
Depth	96 mm

# Excel Cat5e 48 Port Unscreened Patch Panel Right-Angled 1U LSA Punch Down Black

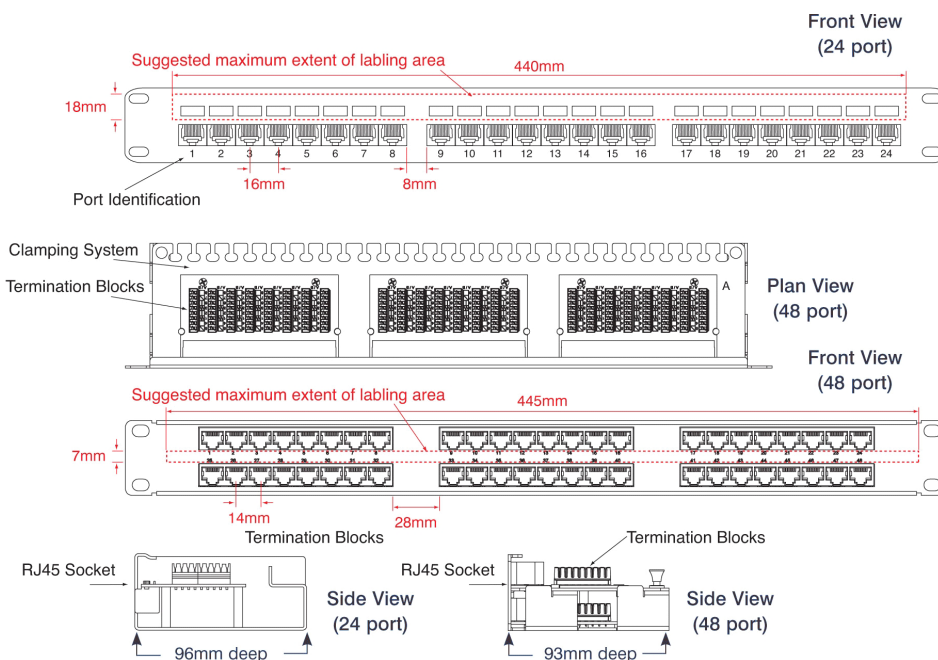
Item Code: 100-497



## Additional specifications

Features	Values
Wiring Specification	T568B
RJ45 Jack Min life expectancy	750 insertions
RJ45 Jack contact	50 microinch gold over 100 microinch nickel undercoat
IDC Contacts Max life expectancy	200 terminations
Contact compatibility	22 to 26AWG
Operating Temperature Range	-10°C to 60°C
Storage Temperature Range	-40°C to 68°C
Relative Humidity	10% to 90%
Panel material	SPCC
Jack housing material	PBT
IDC material	Phosphor bronze, tin over nickel undercoat

## Product drawing



# Excel Cat5e 48 Port Unscreened Patch Panel Right-Angled 1U LSA Punch Down Black

Item Code: 100-497



## Standards

Applicable standard	Detail
ISO/IEC 11801-1:2017	Information technology - Generic cabling for customer premises: Part 1 General Requirements
IEC 61156-5:2009+AMD1:2012 CSV	Multicore and symmetrical pair/quad cables for digital communications - Part 5: Symmetrical pair/quad cables with transmission characteristics up to 1 000 MHz - Horizontal floor wiring - Sectional specification
EN 50173-1:2018	Information technology. Generic cabling systems - General requirements
EN 50173-2:2007 + A1:2010	Information technology. Generic cabling systems - Office premises
ANSI/TIA 568-2.D	Balanced Twisted-Pair Telecommunications Cabling and Components Standards
ANSI/EIA-310-E	Electronic Industries Association standard for horizontal spacing, vertical hole spacing, rack opening and front panel width
RoHS-II/-III (2011/65/EU & 2015/863): 2023	Our products, demonstrate full adherence to the regulatory stipulations of the EU Directive 2011/65/EU (RoHS-II) and its corresponding delegated directive 2015/863 (RoHS-III).
WFD: 2023	Compliant to Waste Framework Directive
SCIP: 2023	Compliant - Does Not Contain Substances of Concern In articles as such or in complex objects (Products)
POPs (EU) No 2019/1021	EU Regulation for the restriction of Persistent Organic Pollutants.

## Part Number Table

Part Number	Description
100-460	Excel Cat5e 24 Port Unscreened Patch Panel Right-Angled 1U Black
100-497	Excel Cat5e 48 Port Unscreened Patch Panel Right-Angled 1U LSA Punch Down Black

Excel is a world class premium performing end to end infrastructure solution designed, Manufactured, supported and delivered without compromise.

Contact us at [sales@excel-networking.com](mailto:sales@excel-networking.com)



E&OE. Excel is a registered trade name of Mayflex Holdings Ltd.