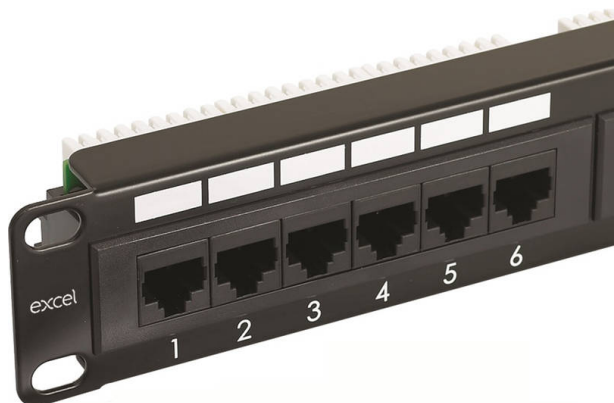


Excel Cat5e 24 Port Unscreened Patch Panel 1U LSA Punch Down Black

Item Code: 100-726

excel
without compromise.



✕ Category 5e

✕ Cage nuts and mini cable ties included

✕ LSA Style Termination Blocks

✕ T568A/B Wiring Configuration

✕ 25 Year system warranty

✕ Supports Gigabit Ethernet

✕ CIBSE TM65 Embodied Carbon: 19.346 kg CO2e

Product Overview

Excel Category 5e Patch Panels comply with the current standards for enhanced Category 5. Each panel offers a choice of labelling with the option to use the screen printed fields on the panel facia or the slide label system or pre printed 1-96 labelling scheme which is enclosed with each panel.

Ease of installation is assured with ample rear cable management positions and LSA IDC blocks. A choice of port density - 16 & 24 Port 1U, 48 Port 2U (100-724 = 3U) - is available to suit all applications. Each panel is available in a choice of colours to allow identification of either applications, departments or services. Cage nuts and mini cable ties are included with each panel.

Product Specifications

Feature	Values
Number of ports - loaded	24
Type of connector	RJ45 8(8)
Shielded	no
Category	5E
Connection type	LSA
Number of rack units (RU)	1
Colour	Black

Excel Cat5e 24 Port Unscreened Patch Panel 1U LSA Punch Down Black

Item Code: 100-726



Mounting method	482.6 mm (19 inch) mounting
Height	44 mm
Width	480 mm
Depth	33 mm

Additional specifications

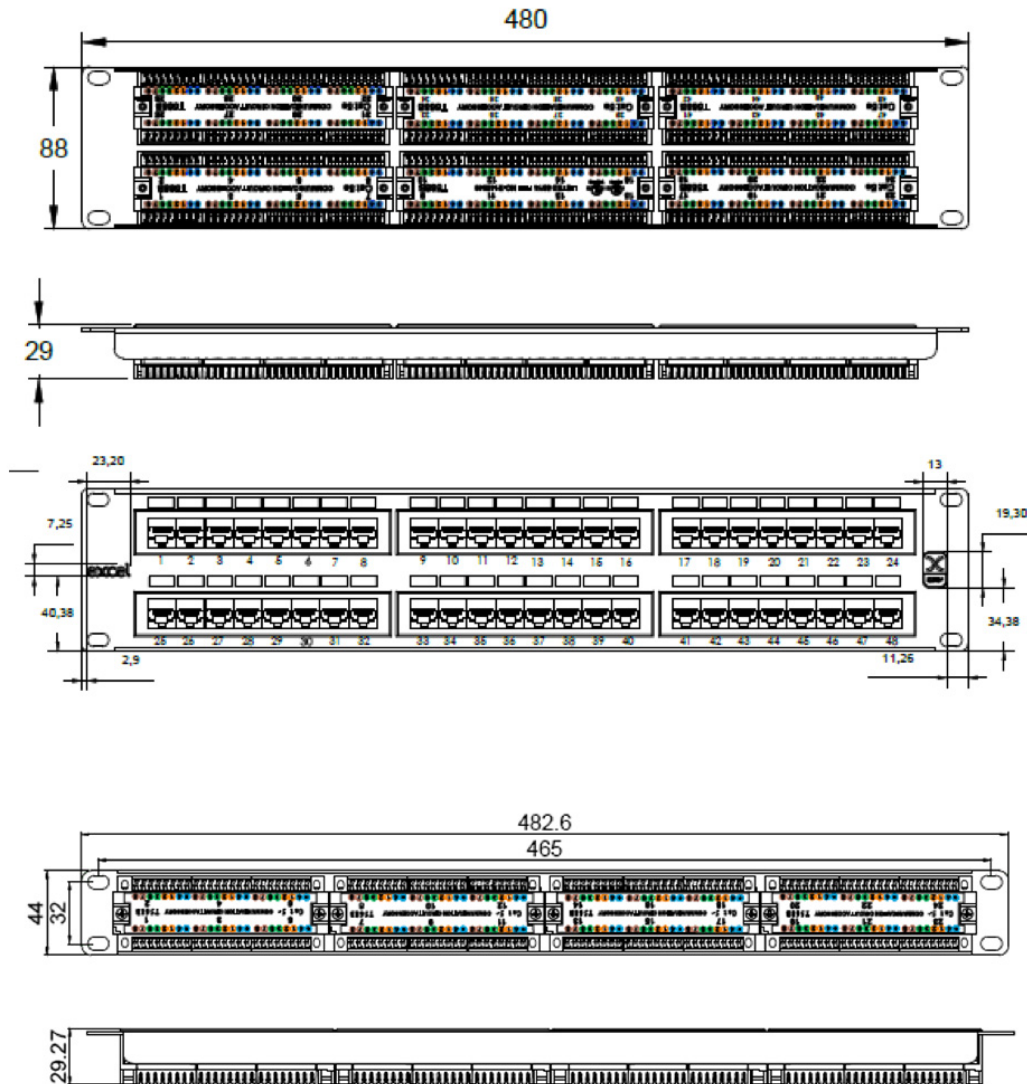
Features	Values
Wiring Specification	T568B
RJ45 Jack Min life expectancy	750 insertions
RJ45 Jack contact	50 microinch gold over 100 microinch nickel undercoat
IDC Contacts Max life expectancy	200 terminations
Contact compatibility	22 to 26AWG
Operating Temperature Range	-10°C to 60°C
Storage Temperature Range	-40°C to 68°C
Relative Humidity	10% to 90%
Panel material	SPCC
Frame material	ABS
Jack housing material	PBT
IDC material	Phosphor bronze, tin over nickel undercoat

Excel Cat5e 24 Port Unscreened Patch Panel 1U LSA Punch Down Black

Item Code: 100-726



Product drawing



Standards

Applicable standard	Detail
ISO/IEC 11801-1:2017	Information technology - Generic cabling for customer premises: Part 1 General Requirements
IEC 61156-5:2009+AMD1:2012 CSV	Multicore and symmetrical pair/quad cables for digital communications - Part 5: Symmetrical pair/quad cables with transmission characteristics up to 1 000 MHz -

Excel Cat5e 24 Port Unscreened Patch Panel 1U LSA Punch Down Black

Item Code: 100-726



	Horizontal floor wiring - Sectional specification
EN 50173-1:2018	Information technology. Generic cabling systems - General requirements
EN 50173-2:2007 + A1:2010	Information technology. Generic cabling systems - Office premises
ANSI/TIA 568-2.D	Balanced Twisted-Pair Telecommunications Cabling and Components Standards
ANSI/EIA-310-E	Electronic Industries Association standard for horizontal spacing, vertical hole spacing, rack opening and front panel width
RoHS-II/-III (2011/65/EU & 2015/863): 2023	Our products, demonstrate full adherence to the regulatory stipulations of the EU Directive 2011/65/EU (RoHS-II) and its corresponding delegated directive 2015/863 (RoHS-III).
WFD: 2023	Compliant to Waste Framework Directive
SCIP: 2023	Compliant - Does Not Contain Substances of Concern In articles as such or in complex objects (Products)
POPs (EU) No 2019/1021	EU Regulation for the restriction of Persistent Organic Pollutants.

Part Number Table

Part Number	Description
100-450	Excel Cat5e 24 Port Unscreened Patch Panel 1U LSA Punch Down Blue
100-451	Excel Cat5e 24 Port Unscreened Patch Panel 1U LSA Punch Down Red
100-452	Excel Cat5e 24 Port Unscreened Patch Panel 1U LSA Punch Down Green
100-453	Excel Category 5e Unscreened Patch Panel - 48-port, 2U - Blue
100-454	Excel Category 5e Unscreened Patch Panel - 48-port, 2U - Red
100-455	Excel Category 5e Unscreened Patch Panel - 48-port, 2U - Green
100-722	Excel Category 5e Unscreened Patch Panel - 32-port, 2U - Black
100-724	Excel Cat5e 48 Port Unscreened Patch Panel 3U LSA Punch Down Black
100-726	Excel Cat5e 24 Port Unscreened Patch Panel 1U LSA Punch Down Black
100-728	Excel Cat5e 48 Port Unscreened Patch Panel 2U LSA Punch Down Black
100-748	Excel Cat5e 24 Port Unscreened Patch Panel 1U LSA Punch Down Beige

Excel is a world class premium performing end to end infrastructure solution designed, Manufactured, supported and delivered without compromise.

Contact us at sales@excel-networking.com



E&OE. Excel is a registered trade name of Mayflex Holdings Ltd.