

CABLE TRAYS (FOR VERTICAL CABLING)

Cannon steel cable tray provide an attractive and very durable product for exceptional, simple cable management.

In order to provide a neat support for cabling, the cable tray fits vertically to the depth supports within the cabinet.

Fixing slots are located at the 'U' heights and offer a modular design appropriate with any Cannon cabinet or rack. No additional drilling is required, however you may require additional depth supports for shorter lengths than cabinet U height.

Finish: Standard: Powder painted Velvet Black to RAL 9005 or Chameleon (Grey White) to RAL 9002. Other colours available on request.

Supplied with fixings for secure attachment to the cabinet depth support.



HEIGHT	50mm WIDE	75mm WIDE	100mm WIDE	150mm WIDE	200mm WIDE	250mm WIDE	300mm WIDE	400mm WIDE	500mm WIDE
7U	-	047C00000707	-		-	-	-	-	-
10U	-	047C00000710	-		-	-	-	-	-
11U	-	-	047C00001011		-	-	-	-	-
12U	047C00000512	047C00000712	047C00001012	047C00001512	-	-	-	-	-
13U	-	047C00000713	-	047C00001513	-	-	-	-	-
15U	047C00000515	-	047C00001015	047C00001515	047C00002015	-	-	-	-
16U	-	047C00000716	047C00001016	-	-	-	-	-	-
17U	-	-	047C00001017	-	-	-	-	-	-
18U	-	047C00000718	047C00001018	047C00001518	047C00002018	-	047C00003018	-	-
20U	-	-	047C00001020	047C00001520	-	-	047C00003020	-	-
21U	-	-		047C00001521	-	-	-	-	-
22U	-	-	047C00001022	047C00001522	-	-	047C00003022	-	-
23U	-	-	047C00001023	-	-	-	047C00003023	-	-
24U	-	047C00000724	047C00001024	047C00001524	-	-	-	-	-
25U	047C00000525		047C00001025	047C00001525	047C00002025	-	047C00003025	-	-
26U					047C00002026	-	-	-	-
27U	-		047C00001027	047C00001527	047C00002027	-	047C00003027	-	-
28U					047C00002028	-	-	-	-
30U	-	047C00000730	-	-	-	-	-	-	-
31U					047C00002031	047C00002531	047C00003031	-	-
32U	-	047C00000732	047C00001032	047C00001532	-	-	-	-	-
33U	-	047C00000733	047C00001033	047C00001533	047C00002033	-	047C00003033	-	-
35U	-	-	047C00001035	-	-	-	047C00003035	-	-
36U	-	047C00000736	047C00001036	047C00001536	047C00002036	-	-	-	-
37U	-	-	047C00001037	047C00001537	-	-	047C00003037	-	-
38U	-	-	-	047C00001538	-	-	-	-	-
39U	047C00000539	047C00000739	047C00001039	047C00001539	047C00002039	047C00002539	047C00003039	-	-
40U				047C00001540	-	-	-	-	-
41U	-	-	047C00001041	047C00001541	-	-	047C00003041	-	-
42U	047C00000542	047C00000742	047C00001042	047C00001542	047C00002042	047C00002542	047C00003042	047C00004042	047C00005042
43U	-	-	047C00001043	047C00001543	-	-	-	-	-
45U	047C00000545	047C00000745	047C00001045	047C00001545	047C00002045	-	047C00003045	047C00004045	
46U				047C00001546	-	-	-	-	-
47U	047C00000547	047C00000747	047C00001047	047C00001547	047C00002047	047C00002547	047C00003047	047C00004047	047C00005047
48U				047C00001548	047C00002048	-	047C00003048	-	-
							047C00003049	-	-
50U					047C00002050	-	-	-	-
52U	-	-	047C00001052	047C00001552	047C00002052	-	047C00003052	-	-
54U	-	-	047C00001054	-	-	-	047C00003054	-	-

Size conversions: 1U = 44.45mm = 1 3/4" 600mm = 24" 700mm = 28" 800mm = 32" 1kg = 2.2lbs

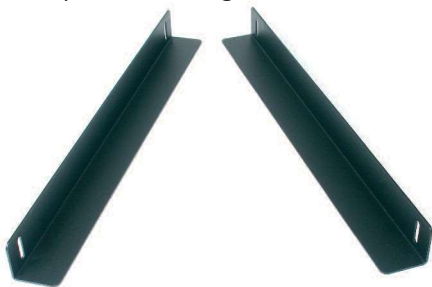
STANDARD FIT

Chassis Support Angles

Cannon chassis supports offer extra support, generally to 19-inch equipment, fitting between the front and rear mounting posts. Care should be taken to ensure that the chassis supports are sized to suit any fixed shelf depths or that additional intermediate mounting posts are fitted to the cabinet.

Finish: Standard: Powder painted Velvet Black to RAL 9005 or Chameleon (Grey White) to RAL 9002. Other colours available on request.

Supplied: In pairs with fixings.



DEPTH	PART CODE
350mm	KP0020
400mm	KP0026
450mm	KP0021
550mm	KP0022
600mm	KP0023

HEAVY DUTY CHASSIS SUPPORT ANGLES

Heavy Duty Chassis Support Angles provide restricted lateral movement of 19-inch equipment. Recommended for use with intermediate mounting posts - see page 4.16

Finish: Standard: Powder painted Velvet Black to RAL 9005 or Chameleon (Grey White) to RAL 9002. Additional colours available on request.

Supplied: In pairs with fixings.

Load rating: 170kg max (evenly distributed).



DEPTH	PART CODE
650mm	401C00046500
830mm	401C00048300
917mm	401C00049900

THROUGH-CABLING APERTURE FRAME

- Provide effective bend radius control for through-cabling apertures on Cannon racks and cabinets
- Cannon moulded, through-cabling aperture frames, ensure that bend radius control is provided to an often neglected cabling path
- The CannonThrough-Cabling Aperture Frame is designed to support CAT5e, CAT6, CAT7 and fibre installation standards
- May be fitted to one face or both faces of a through cabling window
- Aperture size through window frame is 73mm x 96mm
- Through-Cabling Aperture Frame clips into any aperture of 77mm x 100mm where the metal panel thickness is 1.5mm to 2.2mm
- Compatible with Vertical Cable Management Rings 110mm x 50mm and 110mm x 100mm

HEIGHT	FRONT ONLY	FRONT & REAR
25U	16-off	32-off
42U	28-off	56-off
47U	32-off	64-off

Supplied: In packs of 10.

Finish: Blue plastic.



For Side Panels fitted with blue mouldings see page 4.5

DESCRIPTION	PART CODE
1 PACK OF 10 – BLUE	CA162
1 PIECE	NR167

VERTICAL CABLE MANAGEMENT RINGS FOR 800MM WIDE CABINETS.

Cannon vertical cable management rings fit directly onto the front or rear faces of each infill panel and are available in two sizes:

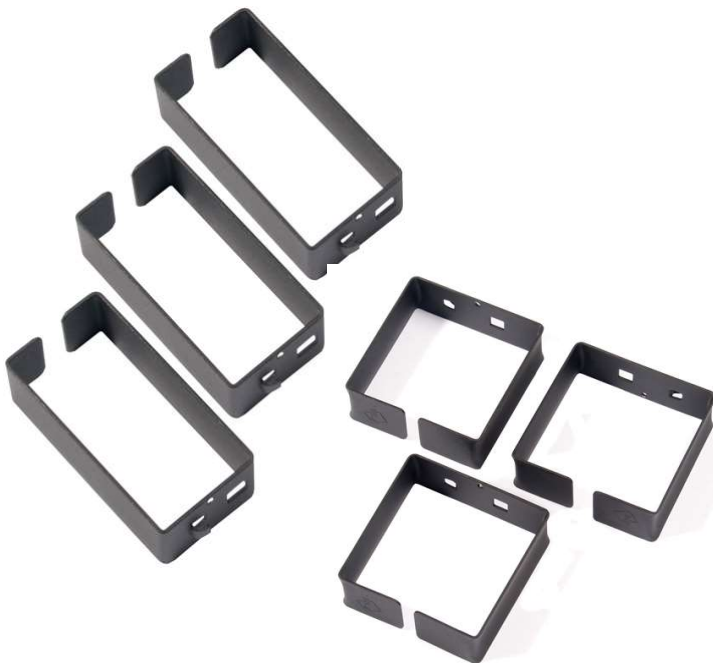
- 90mm x 60mm
- 90mm x 90mm

Material & Finish: 1.5mm steel, painted Velvet Black to RAL 9005 or Chameleon (Grey White) to RAL 9002.

Additional colours available on request.

Supplied: Individually with fixings.

RING SIZE	PART CODE
90mm x 60mm	711C00090600
90mm x 90mm	711C00090900



PLASTIC COATED VERTICAL CABLE MANAGEMENT RINGS FOR 800MM WIDE CABINETS.

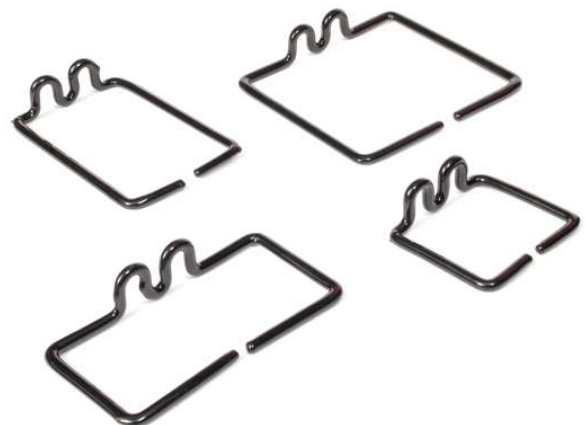
Cannon Vertical Cable Management Rings fit directly onto the front or rear faces of each infill panel and are available in four sizes:

- 60mm x 50mm
- 60mm x 100mm
- 110mm x 50mm
- 110mm x 100mm

Materials & Finish: Black plastic coated (Nylon 66-S/E to 94 VO 1.5/2.0 MS).

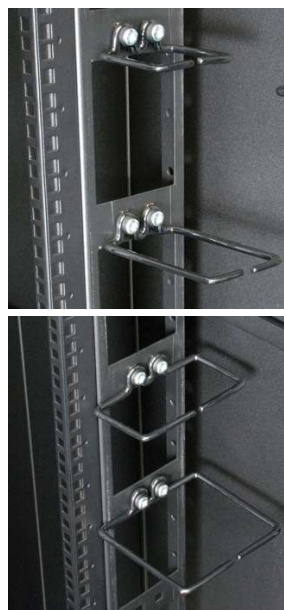
Supplied: Individually with fixings.

RING SIZE	PART CODE	COMMENTS
60mm x 50mm	CA150-KIT	To fit either 50mm or 100mm infill panels
60mm x 100mm	CA151-KIT	To fit either 50mm or 100mm infill panels
110mm x 50mm	CA152-KIT	To fit 100mm infill panels
110mm x 100mm	CA153-KIT	To fit 100mm infill panels



RECOMMENDED QUANTITIES PER INFILL

INFILL PANEL SIZE	MAXIMUM NUMBER OF CABLE RINGS PER INFILL PANEL
4U to 8U	1
9U	2
10U to 13U	3
14U to 17U	4
18U	5
19U to 22U	6
23U to 25U	7
26U to 29U	8
30U to 31U	9
32U to 33U	10
35U to 36U	11
37U to 39U	12
40U to 43U	13
45U to 47U	14
48U to 49U	15
50U to 51U	16
52U to 55U	17



Size conversions: 1U = 44.45mm = 1 3/4" 600mm = 24" 700mm = 28" 800mm = 32" 1kg = 2.2lbs

BLUE NYLON CABLE MANAGEMENT RINGS FOR 800MM WIDE CABINETS.

Cannon Blue Nylon Cable Management fit directly onto the front or rear faces of each infill panel and are available in sizes in chart below:

Materials & Finish: Nylon 66-S/E to 94 VO SKY BLUE RAL 5015.

Supplied: Individually with fixings.

RING SIZE	PART CODE	COMMENTS
100mm x 100mm	NR168	"C" shape cable management ring
125mm x 141mm	NR169	"C" shape cable management ring
95.5 x 123	NR171	Through cabling Aperture Frame
123mm x 141mm	NR180	"C" shape cable management ring
92mm x 44mm	NR181	Cable Management Ring
92mm x 88mm	NR182	Cable Management Ring



NR168

RECOMMENDED QUANTITIES PER INFILL

INFILL PANEL SIZE	MAXIMUM NUMBER OF CABLE RINGS PER INFILL PANEL
4U to 8U	1
9U	2
10U to 13U	3
14U to 17U	4
18U	5
19U to 22U	6
23U to 25U	7
26U to 29U	8
30U to 31U	9
32U to 33U	10
35U to 36U	11
37U to 39U	12
40U to 43U	13
45U to 47U	14
48U to 49U	15
50U to 51U	16
52U to 55U	17

TELESCOPIC CABLE TROUGH.

Cannon telescopic cable trough fits directly to the 800 wide infill panels installed to CANNON SMART cab range. They allow:

- Cable management between the front and rear of installed equipment within the 19" area.
- Closed position: 536mm
- Maximum telescopic position: 950mm

Materials & Finish: Powder coated MS.

Supplied: Individually with fixings.



DESCRIPTION	PART CODE
TELESCOPIC CABLE TROUGH 536mm – 950mm	925B02058001

1U CABLE RINGS

These Cannon 1U cable rings fit to the side flange of 19-inch mounting posts to provide a neat cable management function.

Materials & Finish: Mild steel with a thick black plastic coating.

Supplied: Individually with fixings.



DESCRIPTION	CABLE CAPACITY	PART CODE
1U CABLE RING	150mm x 50mm	CA154-KIT



CORNER POST CABLE RINGS

A simple twist and turn action locates this cable ring securely into the corner post profile enabling simple and accurate vertical cable management into all cabinet corner posts. **No fixings required!**

Materials & Finish: Spring steel with a thick black plastic coating.

Supplied: Individually.

DESCRIPTION	CABLE CAPACITY	PART CODE
CORNER POST CABLE RING	38mm X 38mm	CA156

MULTI ENTRY 19-INCH CABLE BASKET

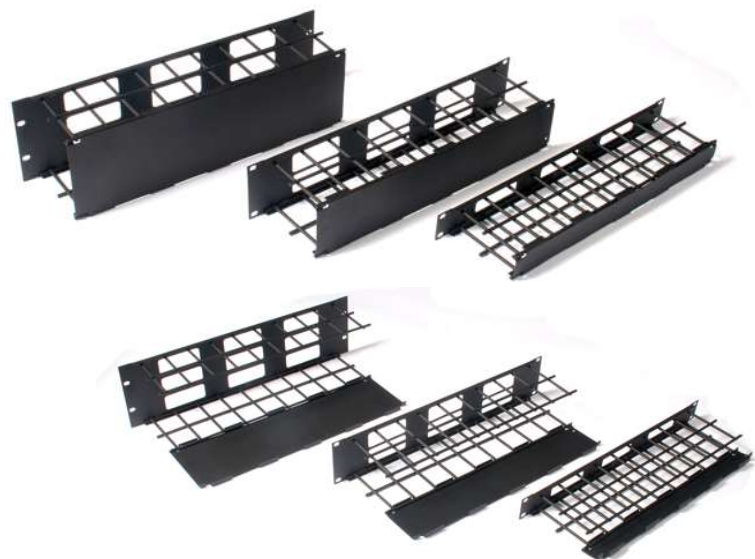
High capacity cable management baskets for use within the 19-inch rack mount area.

Features & Benefits

- Multiple cable entry, in any direction
- Optional 'U' heights to optimise space deployment
- Hinged, drop door at front to hide/protect cabling whilst still providing easy access
- Attractive high tech appearance
- Robust and versatile
- Simplifies rack wiring and configuration
- Will fit any 19-inch rack
 - High capacity
 - Provides easy and rapid cable management
 - Extremely cost effective

Three sizes available: 1U, 2U and 3U.

Finish: Standard: Powder painted Velvet Black to RAL 9005 or Chameleon (Grey White) to RAL 9002. Other colours available on request.



SIZE	PART CODE
1U	CA211
2U	CA212
3U	CA213

1U CABLE MANAGEMENT PANEL

Cannon Cable Management Panels fit directly onto the 19-inch equipment mounting posts of Cannon cabinets and have been designed to provide user-friendly cabling support.

- Eliminates cable chaffing
- Allows through cabling
- Open design allows easy use of cable ties or CANNON WRAP if required.
- CANNON WRAP can be found on [page 4.26](#)

Materials & Finish: Mild steel welded construction with a thick black plastic coating

NB: Fixings required - [see front panel fixing kit page 4.26](#)

DESCRIPTION	PART CODE
1U CABLE MANAGEMENT PANEL	CA155-KIT



1U & 2U CABLE MANAGEMENT PANELS

Cannon Cable Management Panels fit directly onto the 19-inch equipment mounting posts and are designed to provide user-friendly cabling support.

- Eliminates cable chaffing
- Allows through cabling
- Open design allows easy use of cable ties or CANNON WRAP if required.
- CANNON WRAP can be found on [page 4.26](#)

Material & Finish: 1.5mm steel, painted Velvet Black to RAL 9005 or Chameleon (Grey White) to RAL 9002.

Additional colours available on request.

NB: Fixings required - [see front panel fixing kit page 4.26](#)



DESCRIPTION	PART CODE
19" 1U RING SIZE 60mm D x 30mm H	702C01600601
19" 1U RING SIZE 90mm D x 30mm H	702C01600901
19" 1U RING SIZE 90mm D x 30mm H	702C01600902
19" 2U RING SIZE 90mm D x 74mm H	702C02600902

1U & 2U CABLE MANAGEMENT PANELS

Cannon Cable Management Panels fit directly onto the 19-inch equipment mounting posts and are designed to provide user-friendly cabling support.

- Eliminates cable chaffing via NYLON guides
- Allows through cabling
- Open design allows easy use of cable ties or CANNON WRAP if required.
- CANNON WRAP can be found on [page 4.26](#)

Material & Finish: 1.5mm steel, painted Velvet Black to RAL 9005 or Chameleon (Grey White) to RAL 9002 & Blue Guides Nylon 66-S/E to 94 VO SKY BLUE RAL 5015.



DESCRIPTION	PART CODE
19" 1U RING SIZE 92mm D x 44mm H	CA158
19" 2U RING SIZE 92mm D x 88mm H	CA159

NB: Fixings required - [see front panel fixing kit page 4.26](#)

CANNON WRAP

- Self gripping enabling easy containment of cable bundles.
- Reduces possibility of damage to cabling.
- Softer than traditional plastic cable ties.
- Available in 20m roll – cut to any length for your own requirements.

Colour:

Black with white text.

DESCRIPTION	PART CODE
CANNON WRAP	CA161



FRONT PANEL FIXINGS

Cannon front panel fixings consist of:

- M6 Cage nuts
- Cup washers
- M6 Pan Head Pozidrive screws
- Supplied in a bag of 25/50/100 sets.



QUANTITY	PART CODE
25	KP0276
50	KP0004
100	KP0275

MIKEY BUTTONS

- Quick-Fit Fasteners for 19-inch panel mounting – **10 per kit**
- **MI**cro Turn (1/8 turn to fix)
- **KEY**less/Tool-less
- Large ears provide easy grip for Quick-Fit mounting of Cannon 19-inch panels and cable management rings
- No more fiddly cage nuts
- Re-usable, quick, reliable



DESCRIPTION	PART CODE
MiKEY BUTTON	KP0323

QUICK-FIT BUTTONS (1/8 TURN)

- Quick-Fit Buttons fit Cannon Quick-Fit Accessories.



QUANTITY	PART CODE
20	KP0120
100	KP0121