

CMW Ltd – Singlemode Fibre Optic Patch Leads



Product Overview :

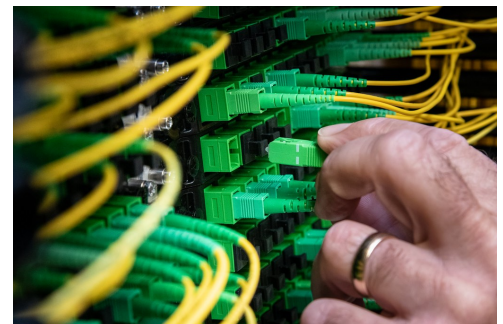
CMW Ltd supplies a versatile range of high-performance singlemode fibre optic patch leads to suit a wide variety of networking applications. Manufactured to IEC Grade C and ITU-T G.657.A1 standards, these cables deliver low signal loss and reliable connectivity for mission-critical networks. Whether for education, commercial premises, offices or data centres, our patch leads provide dependable performance and are available in multiple connector types and lengths — including bespoke assemblies on request.



SPECIFICATION	DETAILS
Fibre type	OS2 (ITU-T G.657.A1)
Construction	Simplex or Duplex, 2.0mm or 3.0mm O/D
Jacket material	LSZH (Low Smoke Zero Halogen)
Flame retardance	IEC 60332-1-2 compliant
Smoke emission	EN IEC 61034-2 compliant
Halogen content	Meets EN IEC 60754
Operating temperature	-20 °C to +70 °C (typical)
Storage temperature	-40 °C to +85 °C (typical)

Key Features

- **G.657.A1 OS2 singlemode fibre** for low attenuation and improved bend performance.
- **Multiple connector options:** LC, SC, ST, FC (UPC or APC where applicable).
- **Available in simplex or duplex** formats with 2.0 mm or 3.0 mm jacket diameter.
- **LSZH jacket** (flame-retardant, low smoke as per IEC/EN standards).
- **Wide choice of lengths from 0.5m to 100m;** custom assemblies available.
- **Compliant with IEC 60332-1-2 and EN IEC 61034-2** for fire and smoke performance.

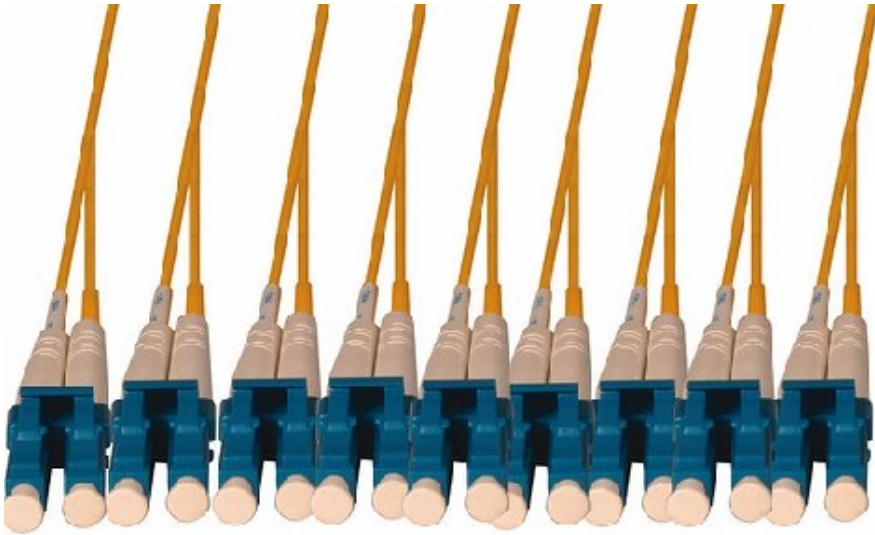


Cable Management Warehouse Ltd

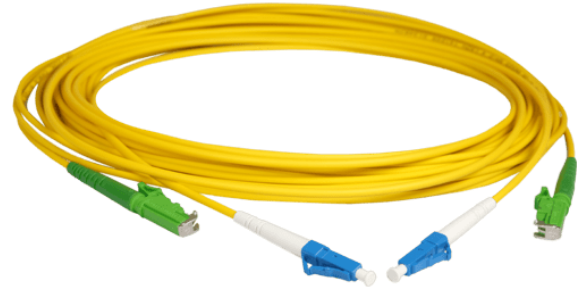
Units 5 & 6 Arkwright Road Ind Est, Bedford MK42 0LQ

Tel: 01234 848030

Email: sales@cmwLtd.co.uk



Item	Specification	
	Singlemode	Multimode
Insertion loss	Typical ≤ 0.2 dB Maximum ≤ 0.3 dB	≤ 0.25 dB
Return Loss	≥ 50 dB (PC) ≥ 60 dB (APC)	/
Repeatability	≤ 0.1	≤ 0.1
Durability	≤ 0.2 dB typical change, 500 matings	≤ 0.2 dB typical change, 500 matings
Interchangeability	≤ 0.2 dB	≤ 0.2 dB
Tensile Strength	> 70 N	> 70 N
Operating Temperature	-40 to +85°C	-40 to +85°C



Part Number Format—**FC A BBB CCCC DD EE F**

Part Number Breakdown

- A** – D = Duplex, S = Simplex
- BBB** – Fibre type (OS2 = Singlemode, OM3 = Multimode, OM4 = Multimode)
- CCCC** – Connector combination (LCLC, LCSC, SCSC, LCST, SCST)
- DD / DDD** – Length code*
- EE** – Jacket colour (YW = Yellow, WH = White, AQ = Aqua, EV = Erica Violet)
- F** – Jacket diameter (2 = 2.0 mm, 3 = 3.0mm)

Examples

- FCDOS2LCSC005YW2** – Duplex OS2 LC–SC 0.5 m Yellow 2.0 mm jacket
- FCDOM3LCSC01AQ2** – Duplex OM3 LC–SC 1.0 m Aqua 2.0 mm jacket
- FCDOM4SCSC015EV3** – Duplex OM4 SC–SC 1.5 m Erica Violet 3.0 mm jacket
- FCOS2LCLC02YW2** – Simplex OS2 LC–LC 2.0 m Yellow 2.0 mm jacket
- FCDOS2LCLC10YW3** – Duplex OS2 LC–LC 10.0 m Yellow 3.0 mm jacket

Length codes*

- 005 = 0.5 m
- 01 = 1.0 m
- 015 = 1.5 m
- 02 = 2.0 m
- 025 = 2.5 m
- 03 = 3.0 m
- 05 = 5.0 m
- 07 = 7.0 m
- 08 = 8.0 m
- 10 = 10.0 m
- 12 = 12.0 m
- 15 = 15.0 m
- 20 = 20.0 m
- 25 = 25.0 m
- 30 = 30.0 m
- 40 = 40.0 m
- 50 = 50.0 m
- 60 = 60.0 m
- 100 = 100.0 m

Cable Management Warehouse Ltd

Units 5 & 6 Arkwright Road Ind Est, Bedford MK42 0LQ

Tel: 01234 848030

Email: sales@cmwlimited.co.uk