

### GigaDuct - Fibre Raceway System

#### Horizontal Straight Slotted Duct

#### Application/Product Description

Horizontal straight, slotted duct features cutouts spaced either 50mm or 100mm. These slots allow fibre to vertically drop into cabinets and racks in virtually any location along the route, and can be used with slotted channel trumpets to protect fibre bend radius.

#### Features and Benefits:

- Supplied with cover
- Segregates fibre optic cable from other media to provide flexibility for future additions or changes.
- Protects cables by maintaining proper bend radius, preventing micro and macro bends that degrade performance
- Slotted feature simplifies cable routing and installation

#### Technical Specifications:

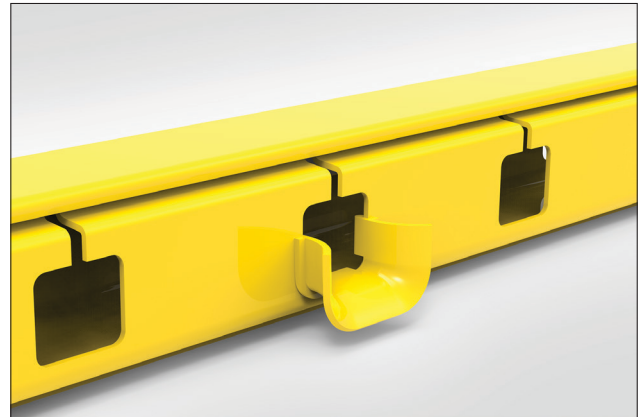
**Product Type:** Straight Slotted Duct

**Colour:** Yellow

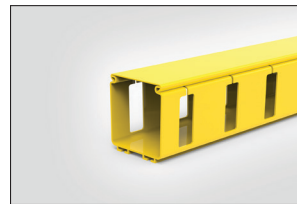
**Material:** Halogen-free

#### Material Standards:

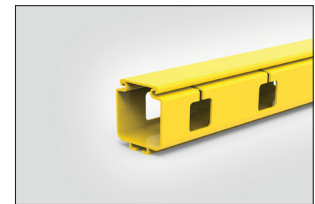
- EN 61249-2-21, IEC 61249-2-21: Non-halogenated Material
- EN 60695-11-10, IEC 60695-11-10: Fire hazard testing
- UL94/V0 plastic flame-retardant
- Directive 2015/65/EU RoHS Compliant
- EC 1907/2006 REACH Compliant
- Suitable for riser and general-purpose applications



Horizontal straight slotted duct with slotted channel trumpet - 50x50mm.



100x100mm with 100mm spaced slots.



50x50mm with 50mm spaced slots.

SLOTTED

STRAIGHT

HORIZONTAL

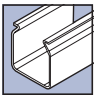


#### Performance Standards:

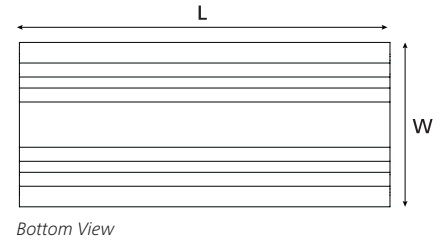
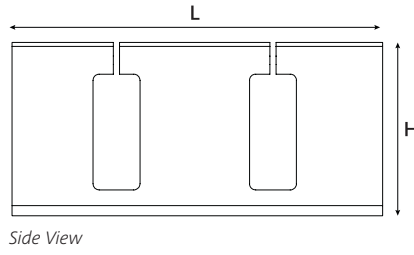
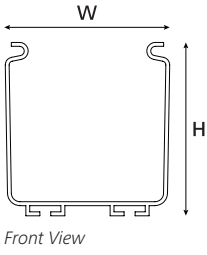
- EN 62368-1, IEC 62368-1: Safety Standard
- ANSI/TIA-942-B, Telecommunications Infrastructure Standard for Data Centres
- ANSI/TIA-569-B, Commercial Building Standard for Telecommunications Pathways and Spaces
- ANSI/UL 2024, Cable Routing Assemblies and Communications Raceways
- CAN/ULC-S143, Standard Method of Fire Tests for Non-Metallic Electrical and Optical Fibre Cable Raceway Systems
- NFPA 70 National Electrical Code (NEC)
- CSA C22.1 Canadian Electrical Code Part 1

PART CODE	Slot Spacing	Cover	DUCT SIZE	Width (W)	Height (H)	Length (L)	UNS
LG-D2DD18-YL	50	Yes	50	57	63.5	1800	181-00410
LG-D2CD18-YL			100	105	113		181-00411
LG-D2DC18-YL	100	Yes	50	57	63.5	1800	181-00408
LG-D2CC18-YL			100	105	113		181-00409

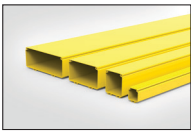
All measurements are in mm unless otherwise stated.



**Technical Diagrams:**



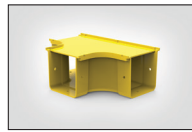
**Associated Products**



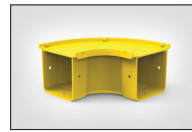
**Straight Duct**  
50x50mm and  
100x100mm



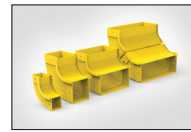
**Tool-free Coupler**  
Easy, tool free  
connection to duct



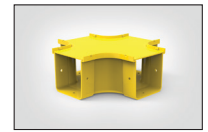
**T-Junctions**  
Horizontal or vertical



**Horizontal Elbows**  
90° or 45° angles



**Vertical Elbows**  
90° or 45° angles



**Intersections**  
Straight and reducer