

GigaDuct - Fibre Raceway System

Express Waterfall Outlet Trumpet

Application/Product Description

Outlet trumpet maintains proper bend radius of fibre exiting the express waterfall outlet.

Features and Benefits:

- For use with 100mm, 200mm and 300mm express waterfall outlet
- Supports correct bend radius of exiting fibre cable

Technical Specifications:

Product Type: Outlet

Colour: Yellow

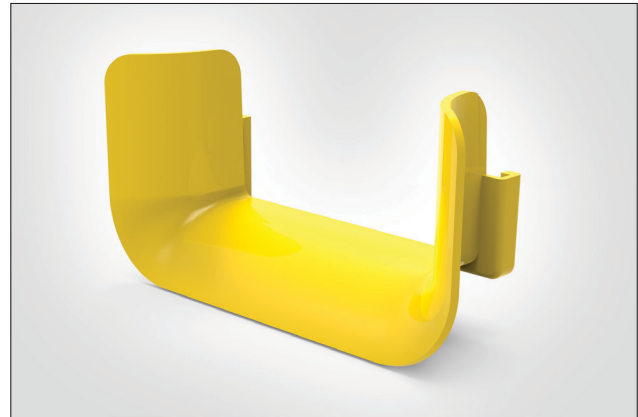
Material: Halogen-free

Material Standards:

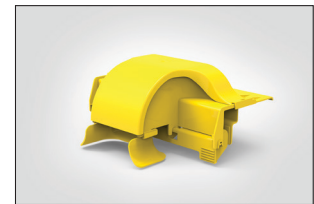
- EN 61249-2-21, IEC 61249-2-21: Non-halogenated Material
- EN 60695-11-10, IEC 60695-11-10: Fire hazard testing
- UL94/V0 plastic flame-retardant
- Directive 2015/65/EU RoHS Compliant
- EC 1907/2006 REACH Compliant
- Suitable for riser and general-purpose applications

Performance Standards:

- EN 62368-1, IEC 62368-1: Safety Standard
- ANSI/TIA-942-B, Telecommunications Infrastructure Standard for Data Centres
- ANSI/TIA-569-B, Commercial Building Standard for Telecommunications Pathways and Spaces
- ANSI/UL 2024, Cable Routing Assemblies and Communications Raceways
- CAN/ULC-S143, Standard Method of Fire Tests for Non-Metallic Electrical and Optical Fibre Cable Raceway Systems
- NFPA 70 National Electrical Code (NEC)
- CSA C22.1 Canadian Electrical Code Part 1



Outlet trumpet.



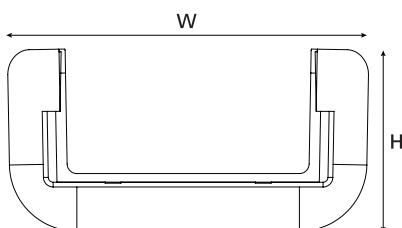
Express waterfall outlet with outlet trumpet.



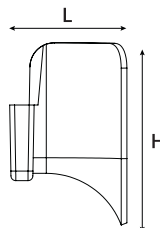
PART CODE	Width (W)	Height (H)	Length (L)	UNS
LG-SMXXTX-YL	147	75	48	181-00429

All measurements are in mm unless otherwise stated.

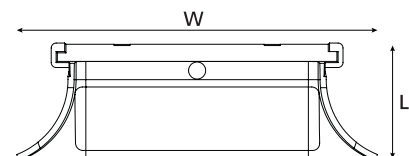
Technical Diagrams:



Front View



Side View



Top View