

GigaDuct - Fibre Raceway System

Horizontal Straight Duct Reducer

Application/Product Description

Horizontal straight duct reducers are used for coupling horizontal straight duct of two different sizes. Supplied with or without covers.

Features and Benefits:

- Supplied with or without cover
- Facilitates transition from larger to smaller horizontal straight duct
- Segregates fibre optic cable from other media to provide flexibility for future additions or changes
- Fully encloses cables to keep out dirt and dust as the fibre is routed through different areas of the data centre
- Protects cables by maintaining proper bend radius, preventing micro bends and macro bends that degrade performance
- Maintains attractive aesthetics by enclosing cables throughout the facility

Technical Specifications:

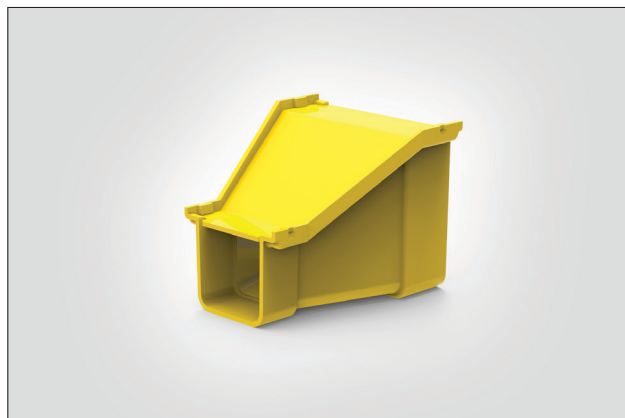
Product Type: Reducer

Colour: Yellow

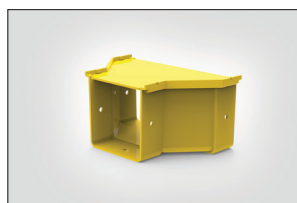
Material: Halogen-free

Material Standards:

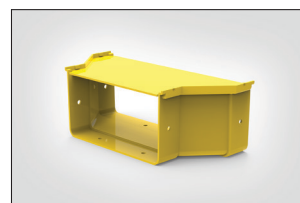
- EN 61249-2-21, IEC 61249-2-21: Non-halogenated Material
- EN 60695-11-10, IEC 60695-11-10: Fire hazard testing
- UL94/V0 plastic flame-retardant
- Directive 2015/65/EU RoHS Compliant
- EC 1907/2006 REACH Compliant
- Suitable for riser and general-purpose applications



100mm to 50mm Horizontal reducer.



200mm to 100mm Horizontal reducer.



300mm to 20mm Horizontal reducer.

STRAIGHT

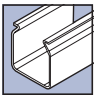
REDUCER

Performance Standards:

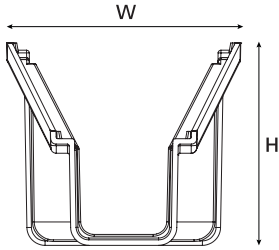
- EN 62368-1, IEC 62368-1: Safety Standard
- ANSI/TIA-942-B, Telecommunications Infrastructure Standard for Data Centres
- ANSI/TIA-569-B, Commercial Building Standard for Telecommunications Pathways and Spaces
- ANSI/UL 2024, Cable Routing Assemblies and Communications Raceways
- CAN/ULC-S143, Standard Method of Fire Tests for Non-Metallic Electrical and Optical Fibre Cable Raceway Systems
- NFPA 70 National Electrical Code (NEC)
- CSA C22.1 Canadian Electrical Code Part 1

PART CODE	Cover	DUCT SIZE		Width (W)	Height (H)	Length (L)	UNS
		MAIN	REDUCER				
LG-RDCDXX-YL	Yes	100	50	128	111	138	181-00358
LG-RDBCXX-YL	Yes	200	100	228	112	140	181-00359
LG-RDACXX-YL	Yes	300	100	329	111	180	181-00361
LG-RDABXX-YL	Yes	300	200	323	113	140	181-00360
LG-RDCDXX-YL-N	No	100	50	128	111	138	855-05082
LG-RDBCXX-YL-N	No	200	100	228	112	140	855-05083
LG-RDACXX-YL-N	No	300	100	329	111	180	855-05084
LG-RDABXX-YL-N	No	300	200	323	113	140	855-05085

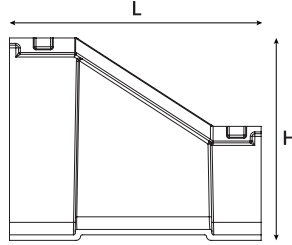
All measurements are in mm unless otherwise stated.



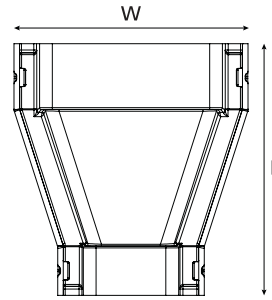
Technical Diagrams:



Front View



Side View



Top View