

GigaDuct - Fibre Raceway System

Trumpets

Application/Product Description

Trumpets help to maintain industry standard bend radius of fibre cables exiting any horizontal straight duct, fitting or outlet.

Slotted channel trumpets are specifically used with the slotted straight duct for maintaining industry standard bend radius of fibre exiting from slotted duct.

Features and Benefits:

- Protects cables by maintaining proper bend radius, preventing micro bends and macro bends that degrade performance
- Supports professional cable management of existing fibre cables
- Maintains attractive aesthetics by enclosing cables throughout the facility

Technical Specifications:

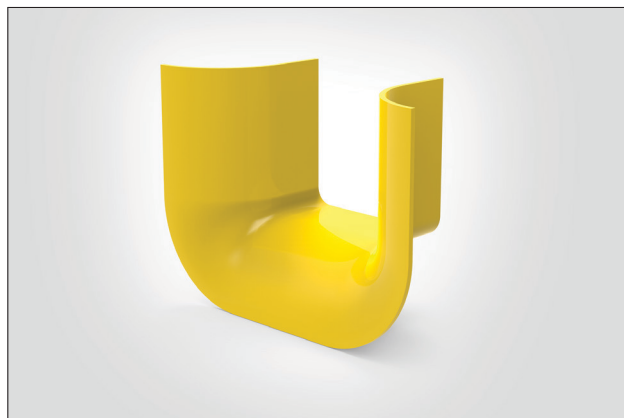
Product Type: Trumpet

Colour: Yellow

Material: Halogen-free

Material Standards:

- EN 61249-2-21, IEC 61249-2-21: Non-halogenated Material
- EN 60695-11-10, IEC 60695-11-10: Fire hazard testing
- UL94/V0 plastic flame-retardant
- Directive 2015/65/EU RoHS Compliant
- EC 1907/2006 REACH Compliant
- Suitable for riser and general-purpose applications



100x100mm 3 sided Trumpet.



100x100mm 4 sided Trumpet.



Slotted channel trumpet.

TRUMPET

Performance Standards:

- EN 62368-1, IEC 62368-1: Safety Standard
- ANSI/TIA-942-B, Telecommunications Infrastructure Standard for Data Centres
- ANSI/TIA-569-B, Commercial Building Standard for Telecommunications Pathways and Spaces
- ANSI/UL 2024, Cable Routing Assemblies and Communications Raceways
- CAN/ULC-S143, Standard Method of Fire Tests for Non-Metallic Electrical and Optical Fibre Cable Raceway Systems
- NFPA 70 National Electrical Code (NEC)
- CSA C22.1 Canadian Electrical Code Part 1

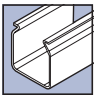
| PART CODE | No. of Sides | DUCT SIZE | Width (W) | Height (H) | Length (L) | UNS |
|--------------|--------------|-----------|-----------|------------|------------|-----------|
| LG-T3DXXX-YL | 3 | 50 | 142 | 95 | 69 | 181-00349 |
| LG-T3CXXX-YL | 3 | 100 | 194 | 138 | 80 | 181-00348 |
| LG-T3BXXX-YL | 3 | 200 | 294 | 136 | 80 | 181-00347 |
| LG-T4DXXX-YL | 4 | 50 | 137 | 137 | 80 | 181-00352 |
| LG-T4CXXX-YL | 4 | 100 | 194 | 194 | 100 | 181-00351 |
| LG-T4BXXX-YL | 4 | 200 | 298 | 198 | 78 | 181-00350 |

All measurements are in mm unless otherwise stated.

Slotted Channel Trumpet

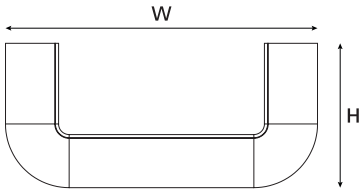
| PART CODE | No. of Sides | DUCT SIZE | Width (W) | Height (H) | Length (L) | UNS |
|--------------|--------------|-----------|-----------|------------|------------|-----------|
| LGA-STD1X-YL | 3 | 50 | 27 | 28 | 49 | 181-00431 |
| | | 100 | | | | |

All measurements are in mm unless otherwise stated.

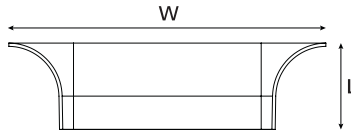


Technical Diagrams:

3 sided Trumpet

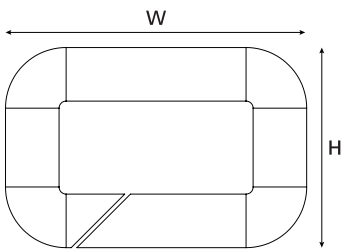


Front View

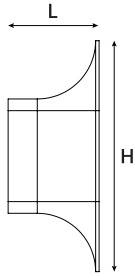


Top View

4 sided Trumpet

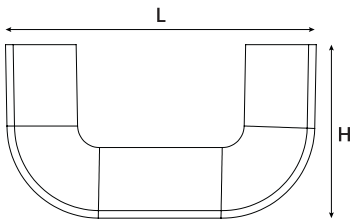


Front View

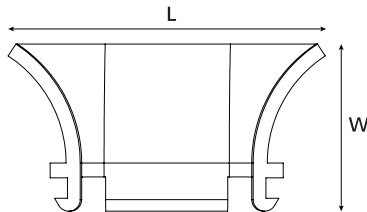


Side View

Slotted Channel Trumpet



Front View



Side View