

### GigaDuct - Fibre Raceway System

#### Horizontal Elbows - 45° and 90°

#### Application/Product Description

Horizontal elbows are used for creating bends that change the direction of horizontal routes. Available with either a 45° or 90° bend. Supplied with or without covers.

#### Features and Benefits:

- Supplied with or without cover
- Changes direction of horizontal routes
- Available in 45° or 90° bends
- Fully encloses cables to keep out dirt and dust as the fibre is routed through different areas of the data centre
- Protects cables by maintaining proper bend radius, preventing micro bends and macro bends that degrade performance
- Maintains attractive aesthetics by enclosing cables throughout the facility

#### Technical Specifications:

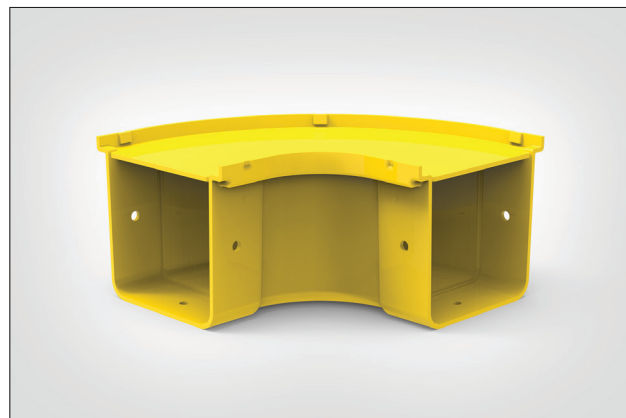
**Product Type:** Elbows

**Colour:** Yellow

**Material:** Halogen-free

#### Material Standards:

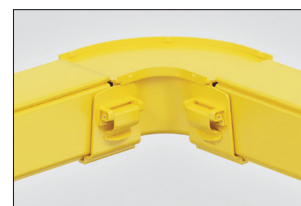
- EN 61249-2-21, IEC 61249-2-21: Non-halogenated Material
- EN 60695-11-10, IEC 60695-11-10: Fire hazard testing
- UL94/V0 plastic flame-retardant
- Directive 2015/65/EU RoHS Compliant
- EC 1907/2006 REACH Compliant
- Suitable for riser and general-purpose applications



100x100mm Horizontal 90° elbow with cover.



100x100mm Horizontal 45° elbow with cover.



100x100mm Horizontal elbow.

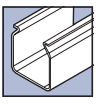


#### Performance Standards:

- EN 62368-1, IEC 62368-1: Safety Standard
- ANSI/TIA-942-B, Telecommunications Infrastructure Standard for Data Centres
- ANSI/TIA-569-B, Commercial Building Standard for Telecommunications Pathways and Spaces
- ANSI/UL 2024, Cable Routing Assemblies and Communications Raceways
- CAN/ULC-S143, Standard Method of Fire Tests for Non-Metallic Electrical and Optical Fibre Cable Raceway Systems
- NFPA 70 National Electrical Code (NEC)
- CSA C22.1 Canadian Electrical Code Part 1

PART CODE	Angle	Cover	DUCT SIZE	Width (W)	Height (H)	Length (L)	UNS
LG-BHXD45-YL	45°	Yes	50	108	62	131	181-00394
LG-BHXC45-YL			100	165	113	184	181-00393
LG-BHXB45-YL			200	273	110	259	181-00392
LG-BHXA45-YL			300	363	113	331	181-00391
LG-BHXD45-YL-N	45°	No	50	108	62	131	855-05044
LG-BHXC45-YL-N			100	165	113	184	855-05045
LG-BHXB45-YL-N			200	273	110	259	855-05046
LG-BHXA45-YL-N			300	363	113	331	855-05047

All measurements are in mm unless otherwise stated.

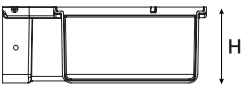


PART CODE	Angle	Cover	DUCT SIZE	Width (W)	Height (H)	Length (L)	UNS
LG-BHXD90-YL	90°	Yes	50	108	62	131	181-00398
LG-BHXC90-YL			100	165	113	184	181-00397
LG-BHXB90-YL			200	273	110	259	181-00396
LG-BHXA90-YL			300	363	113	331	181-00395
LG-BHXD90-YL-N	90°	No	50	108	62	131	855-05048
LG-BHXC90-YL-N			100	165	113	184	855-05049
LG-BHXB90-YL-N			200	273	110	259	855-05050
LG-BHXA90-YL-N			300	363	113	331	855-05051

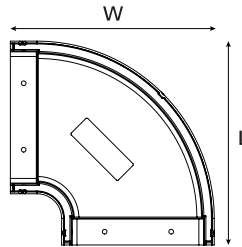
All measurements are in mm unless otherwise stated.

**Technical Diagrams:**

**90° Horizontal Elbow**

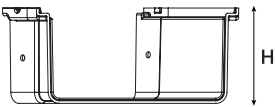


Front View

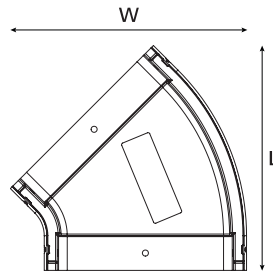


Top View

**45° Horizontal Elbow**



Front View



Top View