

GigaDuct - Fibre Raceway System

Horizontal Intersections

Application/Product Description

Horizontal intersections offer a four way routing pathway to support diverse routing requirements. Supplied with or without covers.

Features and Benefits:

- Supplied with cover or without cover
- Supports diverse routing of horizontal pathways
- Segregates fibre optic cable from other media to provide flexibility for future additions or changes
- Fully encloses cables to keep out dirt and dust as the fibre is routed through different areas of the data centre
- Protects cables by maintaining proper bend radius, preventing micro bends and macro bends that degrade performance
- Maintains attractive aesthetics by enclosing cables throughout the facility

Technical Specifications:

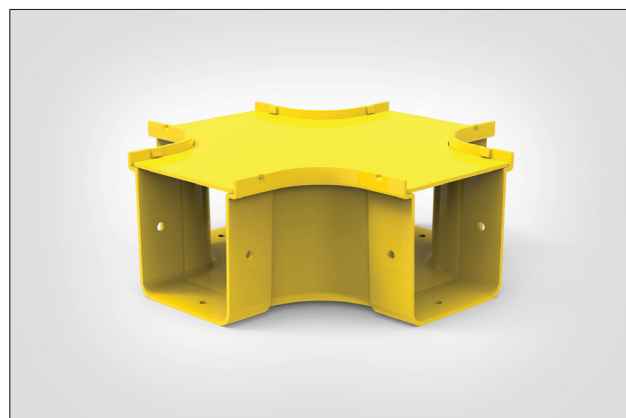
Product Type: Intersection

Colour: Yellow

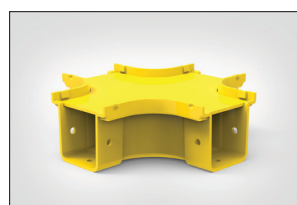
Material: Halogen-free

Material Standards:

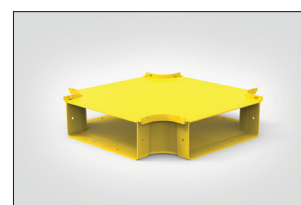
- EN 61249-2-21, IEC 61249-2-21: Non-halogenated Material
- EN 60695-11-10, IEC 60695-11-10: Fire hazard testing
- UL94/V0 plastic flame-retardant
- Directive 2015/65/EU RoHS Compliant
- EC 1907/2006 REACH Compliant
- Suitable for riser and general-purpose applications



100x100mm Horizontal intersection.



50x50mm Horizontal intersection.



300x300mm Horizontal intersection.

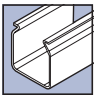


Performance Standards:

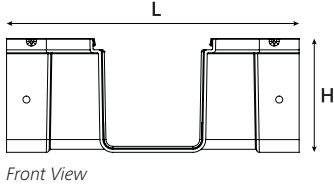
- EN 62368-1, IEC 62368-1: Safety Standard
- ANSI/TIA-942-B, Telecommunications Infrastructure Standard for Data Centres
- ANSI/TIA-569-B, Commercial Building Standard for Telecommunications Pathways and Spaces
- ANSI/UL 2024, Cable Routing Assemblies and Communications Raceways
- CAN/ULC-S143, Standard Method of Fire Tests for Non-Metallic Electrical and Optical Fibre Cable Raceway Systems
- NFPA 70 National Electrical Code (NEC)
- CSA C22.1 Canadian Electrical Code Part 1

PART CODE	Cover	DUCT SIZE	Width (W)	Height (H)	Length (L)	UNS
LG-XODDXX-YL	Yes	50	205	67	205	181-00356
LG-XOCCXX-YL	Yes	100	294	114	294	181-00355
LG-XOBBXX-YL	Yes	200	389	111	389	181-00354
LG-XOAAXX-YL	Yes	300	490	119	490	181-00357
LG-XODDXX-YL-N	No	50	205	67	205	855-05086
LG-XOCCXX-YL-N	No	100	294	114	294	855-05087
LG-XOBBXX-YL-N	No	200	389	111	389	855-05088
LG-XOAAXX-YL-N	No	300	490	119	490	855-05089

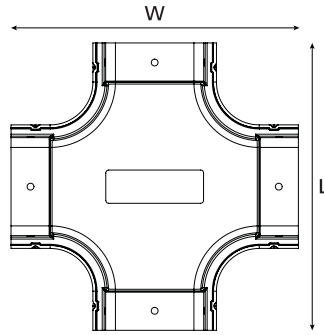
All measurements are in mm unless otherwise stated.



Technical Diagrams:



Front View



Top View