

## GigaDuct - Fibre Raceway System

### Vertical Reducer T-Junctions

#### Application/Product Description

Vertical reducer T-Junctions are used to branch off from the larger main horizontal GigaDuct routing to smaller horizontal routing. Supplied with or without covers.

\*The 100 to 50mm vertical reducer T-Junction is constructed from the following elements; 100mm vertical T-Junction, 100mm to 50mm straight reducer and a joining kit. This will be supplied fully assembled for ease of installation.

#### Features and Benefits:

- Supplied with or without cover
- Allows for Vertical T-Junction transition from larger to smaller straight GigaDuct.
- Segregates fibre optic cable from other media to provide flexibility for future additions or changes
- Fully encloses cables to keep out dirt and dust as the fibre is routed through different areas of the data centre
- Protects cables by maintaining proper bend radius, preventing micro bends and macro bends that degrade performance
- Maintains attractive aesthetics by enclosing cables throughout the facility

#### Technical Specifications:

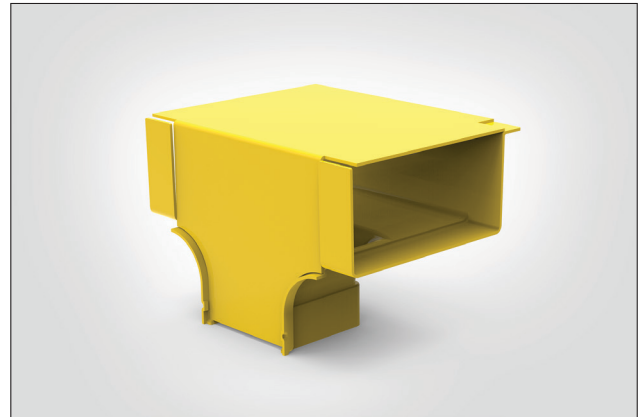
**Product Type:** T-Junction

**Colour:** Yellow

**Material:** Halogen-free

#### Material Standards:

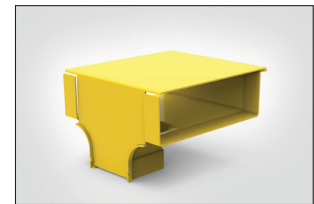
- EN 61249-2-21, IEC 61249-2-21: Non-halogenated Material
- EN 60695-11-10, IEC 60695-11-10: Fire hazard testing
- UL94/V0 plastic flame-retardant
- Directive 2015/65/EU RoHS Compliant
- EC 1907/2006 REACH Compliant
- Suitable for riser and general-purpose applications



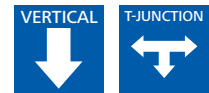
200mm to 100mm Vertical reducer T-Junction.



100mm to 50mm Vertical reducer T-Junction.



300mm to 100mm Vertical reducer T-Junction.

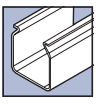


#### Performance Standards:

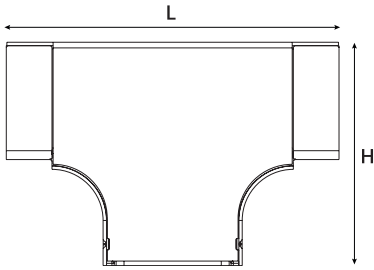
- EN 62368-1, IEC 62368-1: Safety Standard
- ANSI/TIA-942-B, Telecommunications Infrastructure Standard for Data Centres
- ANSI/TIA-569-B, Commercial Building Standard for Telecommunications Pathways and Spaces
- ANSI/UL 2024, Cable Routing Assemblies and Communications Raceways
- CAN/ULC-S143, Standard Method of Fire Tests for Non-Metallic Electrical and Optical Fibre Cable Raceway Systems
- NFPA 70 National Electrical Code (NEC)
- CSA C22.1 Canadian Electrical Code Part 1

PART CODE	Cover	DUCT SIZE		Width (W)	Height (H)	Length (L)	UNS
		MAIN	REDUCER				
LG-TNBCVD-YL	Yes	200	100	236	198	294	181-00345
LG-TNACVS-YL	Yes	300	100	333	200	295	181-00340
LG-TNCDVD-YL	Yes	100	50	117	344	280	855-05078
LG-TNBCVD-YL-N	No	200	100	236	198	294	855-05080
LG-TNACVS-YL-N	No	300	100	333	200	295	855-05081
LG-TNCDVD-YL-N	No	100	50	117	344	280	855-05079

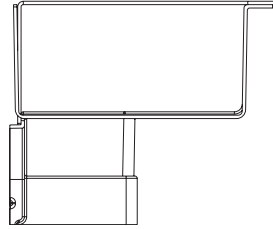
All measurements are in mm unless otherwise stated.



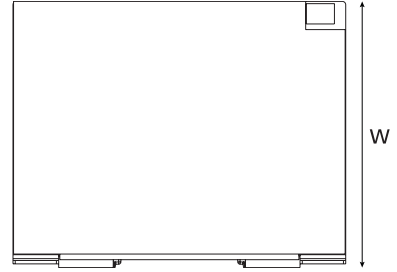
Technical Diagrams:



Front View



Side View



Top View