

### GigaDuct - Fibre Raceway System

#### End Caps

#### Application/Product Description

End caps are used to close off open ends of horizontal straight duct pathways to keep fibre cables protected and secured.

#### Features and Benefits:

- Secures open ends and protects against contamination.
- Maintains attractive aesthetics by enclosing cables throughout the facility

#### Technical Specifications:

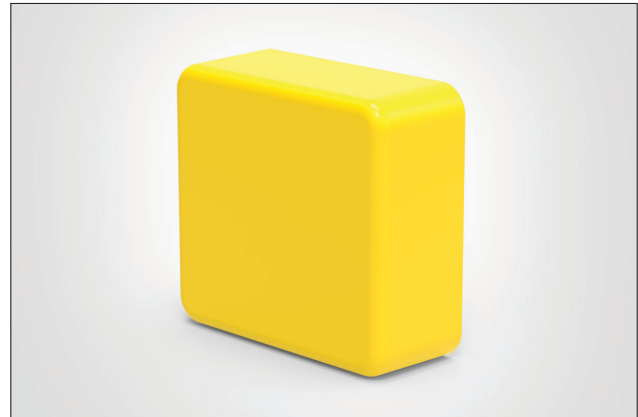
**Product Type:** End Cap

**Colour:** Yellow

**Material:** Halogen-free

#### Material Standards:

- EN 61249-2-21, IEC 61249-2-21: Non-halogenated Material
- EN 60695-11-10, IEC 60695-11-10: Fire hazard testing
- UL94/V0 plastic flame-retardant
- Directive 2015/65/EU RoHS Compliant
- EC 1907/2006 REACH Compliant
- Suitable for riser and general-purpose applications



100x100mm End cap.

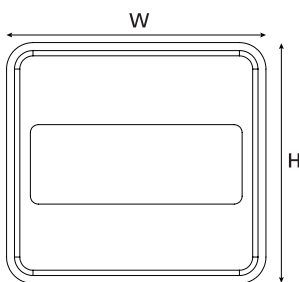
#### Performance Standards:

- EN 62368-1, IEC 62368-1: Safety Standard
- ANSI/TIA-942-B, Telecommunications Infrastructure Standard for Data Centres
- ANSI/TIA-569-B, Commercial Building Standard for Telecommunications Pathways and Spaces
- ANSI/UL 2024, Cable Routing Assemblies and Communications Raceways
- CAN/ULC-S143, Standard Method of Fire Tests for Non-Metallic Electrical and Optical Fibre Cable Raceway Systems
- NFPA 70 National Electrical Code (NEC)
- CSA C22.1 Canadian Electrical Code Part 1

PART CODE	Width (W)	Height (H)	Length (L)	UNS
LG-ECDXXX-YL	52	43	19	181-00362
LG-ECCXXX-YL	98	91	38	181-00363
LG-ECBXXX-YL	200			181-00364
LG-ECAXXX-YL	300			181-00365

All measurements are in mm unless otherwise stated.

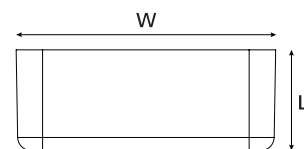
#### Technical Diagrams:



Front View



Side View



Top View