

GigaDuct - Fibre Raceway System

Tool-free Coupler

Application/Product Description

GigaDuct innovative tool-free couplers are used to connect horizontal straight duct, elbows, T-junctions, intersections and reducers without the need for nut, bolts and hand tools.

Features and Benefits:

- Reduces installation time
- Requires no special tooling to install
- Designed for simplicity without compromising robustness and reliability
- Compatible with GigaDuct straight lengths and accessories

Technical Specifications:

Product Type: Coupler

Colour: Yellow

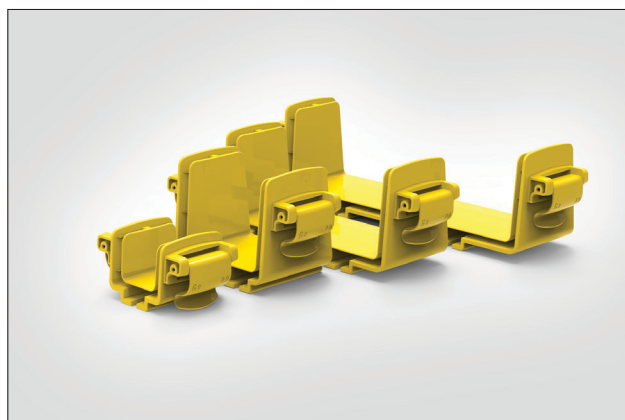
Material: Halogen-free

Material Standards:

- EN 61249-2-21, IEC 61249-2-21: Non-halogenated Material
- EN 60695-11-10, IEC 60695-11-10: Fire hazard testing
- UL94/V0 plastic flame-retardant
- Directive 2015/65/EU RoHS Compliant
- EC 1907/2006 REACH Compliant
- Suitable for riser and general-purpose applications

Performance Standards:

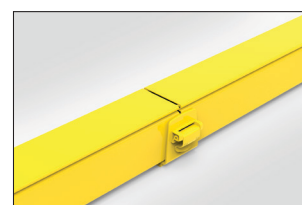
- EN 62368-1, IEC 62368-1: Safety Standard
- ANSI/TIA-942-B, Telecommunications Infrastructure Standard for Data Centres
- ANSI/TIA-569-B, Commercial Building Standard for Telecommunications Pathways and Spaces
- ANSI/UL 2024, Cable Routing Assemblies and Communications Raceways
- CAN/ULC-5143, Standard Method of Fire Tests for Non-Metallic Electrical and Optical Fibre Cable Raceway Systems
- NFPA 70 National Electrical Code (NEC)
- CSA C22.1 Canadian Electrical Code Part 1



Range of tool-free couplers.



100mm tool-free coupler.

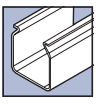


100mm tool-free coupler.

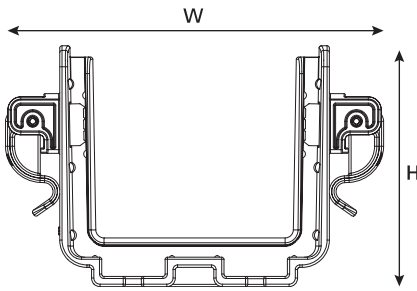
COUPLER

PART CODE	DUCT SIZE	Width (W)	Height (H)	Length (L)	UNS
LG-CTDXXX-YL	50	119	63	78	855-05040
LG-CTCXXX-YL	100	167	107	92	855-05041
LG-CTBXXX-YL	200	267			855-05042
LG-CTAXXX-YL	300	367			855-05043

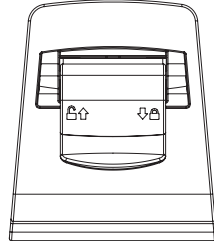
All measurements are in mm unless otherwise stated.



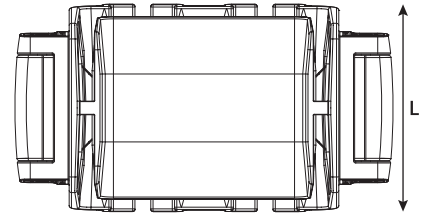
Technical Diagrams:



Front View

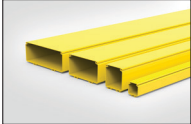


Side View

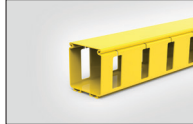


Top View

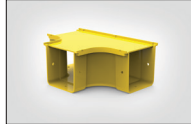
Associated Products



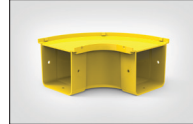
Straight Duct
50x50mm and
100x100mm



Slotted Duct
50x50mm and
100x100mm



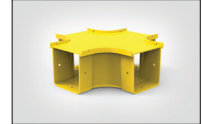
T-Junctions
Horizontal or vertical



Horizontal Elbows
90° or 45° angles



Vertical Elbows
90° or 45° angles



Intersections
Straight and reducer