

POD870-C6

8-Way POD/GOP Box with 2 x 25mm Gland Entries

Category: Grid Outlet Position Box **Date:** November 2024



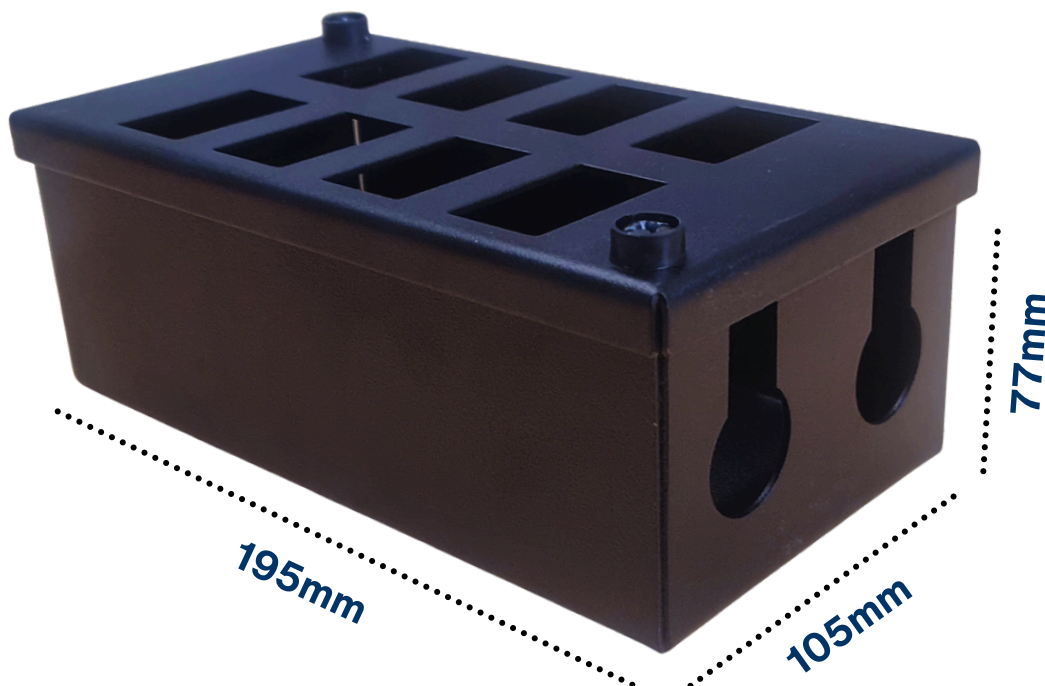
Product Description

The POD870-C6 is an 8-way Grid Outlet Position (GOP) box designed for professional structured cabling installations. This steel enclosure provides containment for both cable and data outlets in raised floor systems or can be mounted underneath desks in office environments. The box features premium powder-coated finish and is compatible with Cat5e, Cat6, and Cat6A LJ6C modules.

Key Features

- 8 x 6C module cutouts arranged in vertical configuration (2 rows of 4)
- Dual 25mm gland entries for flexible conduit connection
- Premium 1.5mm steel construction with powder coating
- 70mm depth for enhanced bend radius for Cat6a terminations
- Fast-release M6 cage nut lid system for easy access
- Keyed gland entry for simplified installation
- Cable tie fixing points for secure cable management
- Mounting holes for floor, wall, or furniture installation
- Compatible with Cat5e, Cat6, and Cat6a cabling systems

Dimensions



Cable Management Warehouse Ltd

Units 5 & 6 Arkwright Road Ind Est, Bedford MK42 0LQ

Tel: 01234 848030 Email: sales@cmwlimited.co.uk

Technical Specifications

Parameter	Details
Overall Depth	77mm
Overall Width	105mm
Overall Length	195mm
Material	1.5mm Steel (Pre-galvanised)
Finish	Powder Coating (RAL 9005 Black)
Number of Outlets	8 (arranged in 2 rows of 4)
Module Type	6C (LJ6C compatible)
Cable Entry Holes	2 x 25mm (Keyed gland entry)
Mounting Points	2 x T-shaped fixing holes
Cable Tie Points	2 positions
Lid Fastening	Fast-release M6 cage nut
Weight (approx)	650g

Model Configuration

The POD870-C6 accepts standard 6C (LJ6C) modules in an 8-position layout. Modules are arranged in two vertical rows of four outlets each. The box accommodates:

- Cat5e LJ6C data modules
- Cat6 LJ6C data modules
- Cat6a LJ6C data modules
- Blank LJ6C modules for unused positions

Installation Guidelines

Mounting

The POD870-C6 can be installed in multiple configurations:

- Under raised floor tiles using flexible conduit connection
- Underneath desks or furniture using mounting bracket
- Wall-mounted installations (with appropriate brackets)
- Direct mounting to floor using T-shaped mounting holes

Cable Entry

Two 25mm keyed gland entries are provided for flexible conduit connection. The keyed design allows retrofit of conduit assembly and ensures secure attachment. Compatible with 25mm flexible conduit systems (polypropylene or corrugated types).

Installation Steps

1. Position the POD box at the desired location
2. Connect 25mm flexible conduit to gland entries
3. Route cables through conduit and into the box
4. Secure cables using internal cable tie points
5. Terminate cables to LJ6C modules (field-supplied)
6. Install modules into 6C cutouts
7. Attach fast-release lid using M6 cage nut system
8. Label each outlet for identification

Environmental Specifications

Parameter	Details
Operating Temperature	-5°C to +60°C
Storage Temperature	-20°C to +70°C
Relative Humidity	10% to 90% (non-condensing)
Fire Classification	Metal enclosure (non-combustible)
Chemical Resistance	Non-corrosive coating
Degree of Protection	IP20 (when properly installed)

Compliance & Standards

This product is designed and manufactured in accordance with applicable standards for structured cabling systems and electrical enclosures.

- EN 60670-1: General requirements for electrical installation boxes
- EN 60670-23: Particular requirements for floor and trunking boxes
- ISO/IEC 11801: Information technology - Generic cabling systems
- EN 50173: Information technology - Generic cabling systems
- IEC 61534-22: Powertrack systems - Self-closing lids

Ordering Information

Part Number	Description	Color
POD870-C6	8-Way POD Box, 70mm, 2x25mm	Black
POD870-C6-WH	8-Way POD Box, 70mm, 2x25mm	White

Note: Modules, brackets, and flexible conduit are sold separately. Contact your supplier for complete system requirements.

Related Products

For complete installation, consider these compatible accessories:

- 25mm L-Brackets for conduit mounting
- 25mm Flexible conduit (polypropylene or corrugated)
- 25mm Cable glands and locknuts
- LJ6C Cat6/Cat6a data modules
- LJ6C Blank modules
- Floor grommets for cable access