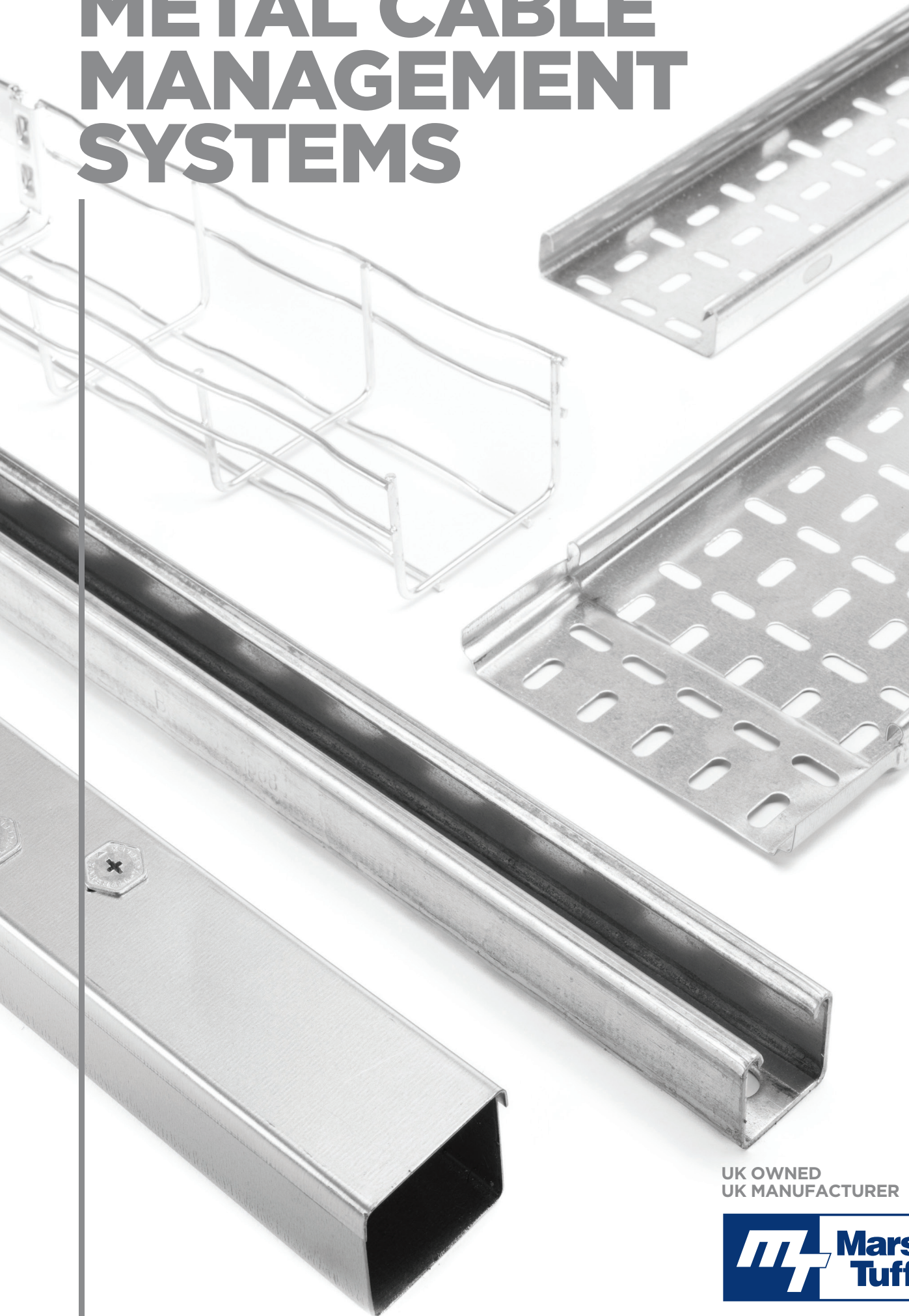


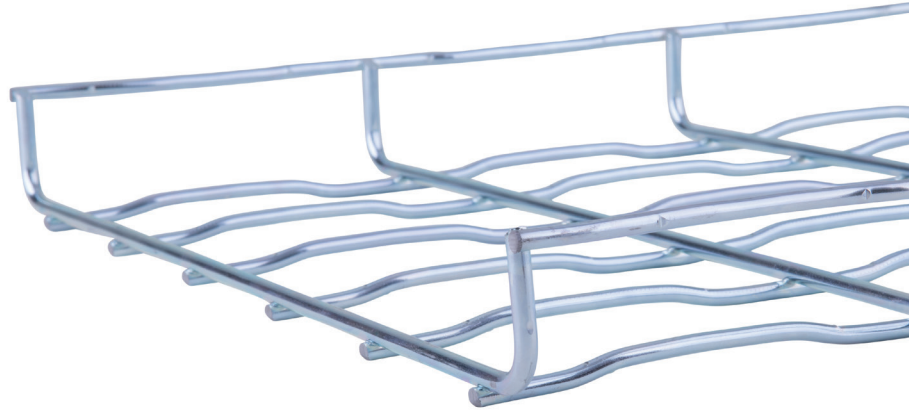
METAL CABLE MANAGEMENT SYSTEMS



DELIVERING INNOVATION
www.marshall-tufflex.com

UK OWNED
UK MANUFACTURER





CABLE MANAGEMENT SPECIALISTS



Marshall-Tufflex is the UK's leading manufacturer and supplier of cable management solutions for commercial, industrial, healthcare, education and domestic markets.

Based in Hastings, East Sussex the company was established in 1942 and is recognised throughout the industry for quality, consistency, reliability, value for money and innovation.

We are extremely proud of our heritage as a family owned company and our priority for the future is to re-invest and continue producing new and effective solutions for the building industry.



ALL YOUR CABLE MANAGEMENT NEEDS IN ONE PLACE

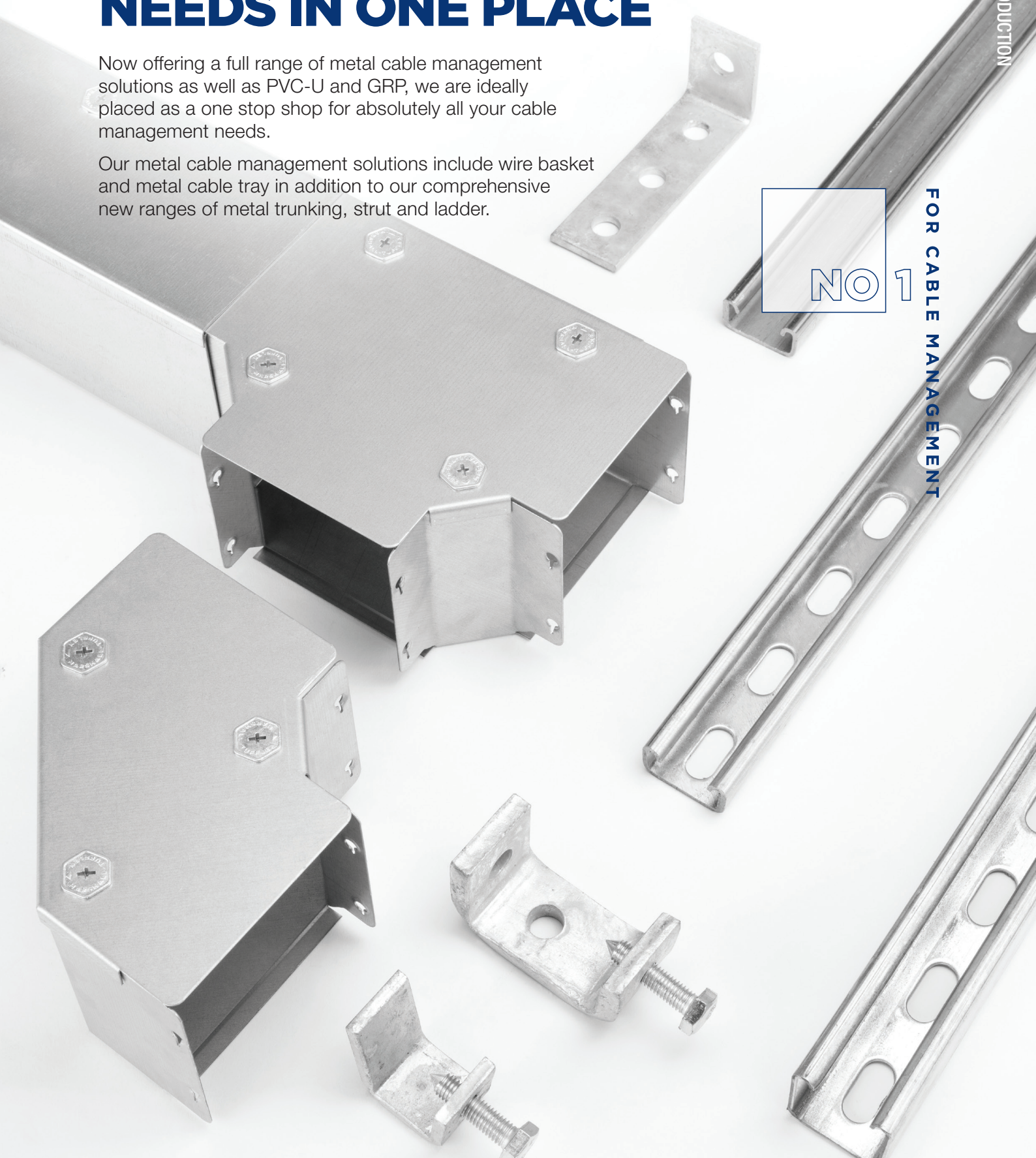
Now offering a full range of metal cable management solutions as well as PVC-U and GRP, we are ideally placed as a one stop shop for absolutely all your cable management needs.

Our metal cable management solutions include wire basket and metal cable tray in addition to our comprehensive new ranges of metal trunking, strut and ladder.

NO 1

FOR CABLE MANAGEMENT

INTRODUCTION



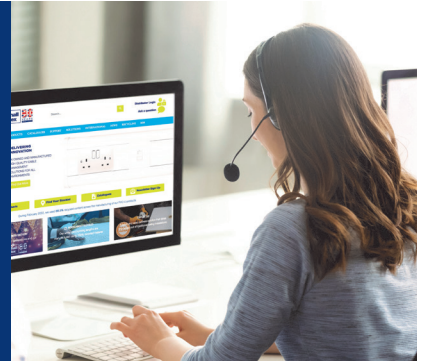
4 | Introduction

First class customer service

Our Area Sales Managers, Specification Managers and technical specialists work closely with consultants, contractors and clients in order to provide the best possible technical and sales support.

Our Customer Service Team are on hand to advise on stock availability, lead times, delivery schedules and order fulfilment.

Our office opening hours are 8:30am to 5:00pm Monday to Friday.



Buying Marshall-Tufflex products

Marshall-Tufflex products are available throughout the UK via a large network of national and independent electrical wholesalers.



Collection service*

Our popular collection service gives our UK customers an unrivalled two-hour turnaround on product orders, allowing collection from our dedicated collection point in Manchester. Orders can also be collected next day from our Watford and Hastings depots.



Manchester: Europa Trading Estate, *Monday – Friday 8am – 5.30pm*
Stoneclough Road, Radcliffe,
Manchester M26 1GG

Watford: Unit 4 Trade City, *Monday – Friday 8am – 5.30pm*
Thomas Sawyer Way,
Watford WD18 0EZ

Hastings: 55-65 Castleham Road, *Monday – Friday 8am – 5.30pm*
Hastings TN38 9NU

- Orders can be collected two hours after order placement from Manchester.
- Orders for collection from Watford or Hastings, placed by 12.30pm will be available for collection from 8am the following day.

* Subject to stock availability

Standard Stock Orders

Orders can be placed online or by email with our Customer Services Team. Goods will be delivered on your next scheduled delivery day, subject to availability, providing your order is received before the daily cut-off time of 12.30pm.



Send your order to us at:

✉ sales@marshall-tufflex.com

Direct to site deliveries

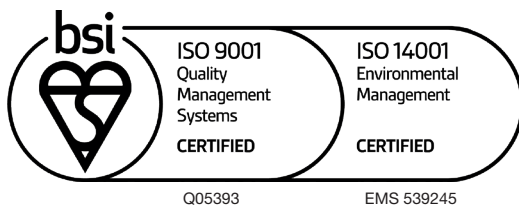
If you need your order delivered directly to site, our Customer Service Team will be happy to arrange this for you.

Carriage charges apply if minimum order value is not met.

Standards

BSI Standards

Marshall-Tufflex is committed to excellence and is recognised by the BSI as a firm of Assessed Capability for Quality Management Systems to BS EN ISO 9001:2015 and Environmental Management Systems to BS EN ISO 14001:2015.



METAL CABLE MANAGEMENT SYSTEMS

Marshall-Tufflex offer a full range of metal cable management solutions designed with ease of fitting and speed of installation in mind.

Metal Trunking

Marshall-Tufflex metal trunking is rated to IP4X and features a simple hexagonal turnbuckle fixing system. Available in a huge variety of sizes and with options for single, two or three compartment versions. Lighting trunking is also available to support, distribute and organise cables within lighting circuits.



NEW

Page
6

Metal Strut

Slotted and plain metal strut to provide a versatile framework and bracket support solution within industrial settings. Ideal for use when installing metal cable tray or wire basket, or to create an independent framework, the system is easy to assemble, re-configure or modify.

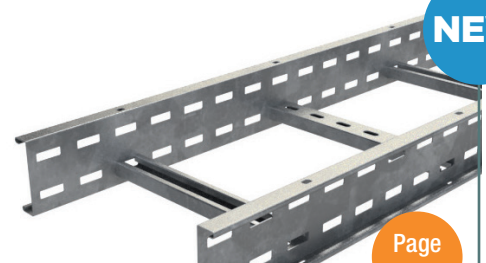


NEW

Page
12

Metal Cable Ladder

Basor metal ladder tray is the ideal solution for routing heavy cables in large areas that have wide spacing between supports, as is often the case in power plants, airports and heavy industry environments.

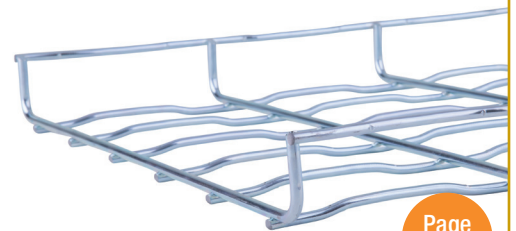


NEW

Page
16

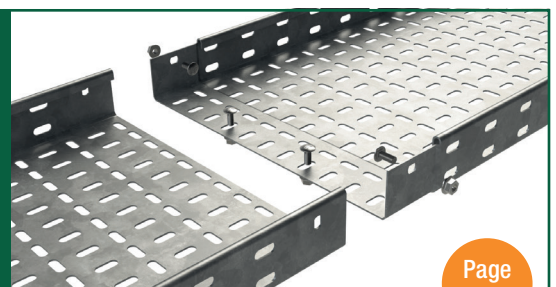
Wire Basket

The Basor fast-coupling wire basket system allows sections of wire basket to be simply joined together for super-fast installation using integral couplers. The unique rippled wire design enhances the product strength and resists flexing.

Page
18

Metal Cable Tray

Basor metal cable tray is ideal for the support of power and data cables in commercial and industrial installations. Sections of metal tray are simply interconnected together for quick and easy installation, saving time and eliminating the need for separate couplers.

Page
24

METAL TRUNKING



Metal trunking offers robust protection for cabling in various industrial and commercial applications. Rated to IP4X and designed with installers in mind, the system features a user-friendly hexagonal turnbuckle fixings for quick and easy installation.

Available in a huge variety of sizes, multi-compartment versions are part of the standard range.

Lighting trunking is also available to support, distribute and organise cables within lighting circuits.

- Supplied in 3 metre lengths
- A wide selection of sizes between 50x50 to 300x300mm
- Lids secured via hexagonal turnbuckles with screw locators for quick and easy installation
- Removable lids for easy modification and to provide cable access via the top or side
- IP4X rated
- Single, two or three compartment options
- Lighting trunking to support, distribute and organise cable for lighting circuits
- Lid fixings and couplers are included as standard



Material and finish

Pre-galvanised finish.

Standard finish
PG
PG: Pre-galvanised

Manufactured from continuously hot dipped zinc coated low carbon steel strip to BS EN 10346.

Product features



IP4X Rating

The IP4X rating indicates that the trunking is highly resistant to the ingress of solid objects, including dust and particles with a diameter greater than 1mm.

Turnbuckle Fixing

The unique hexagonal turnbuckle fixing system offers quick and easy installation for contractors installing the system, with six turnbuckles per three metre length.

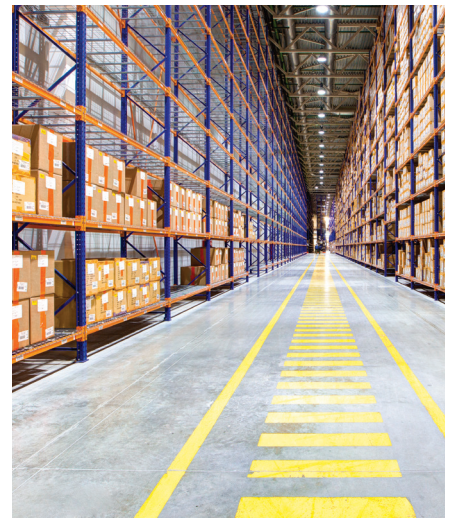
Multi-compartment versions

Turnbuckle trunking can be supplied with welded dividers providing two or three compartment options – all as part of our standard range.



Applications

Metal trunking can be used in a variety of settings, including manufacturing plants, warehouses, laboratories and other industrial facilities.



Trunking



3m - Single compartment

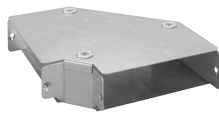


3m - two compartments

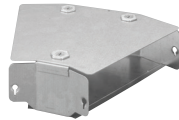


3m - three compartments

Fittings



90° gusset bend top lid



45° gusset bend top lid



90° gusset bend inside lid



45° gusset bend inside lid



90° gusset bend outside lid



45° gusset bend outside lid



Gusset tee top lid



Gusset tee inside lid



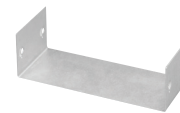
Gusset tee outside lid



End cap



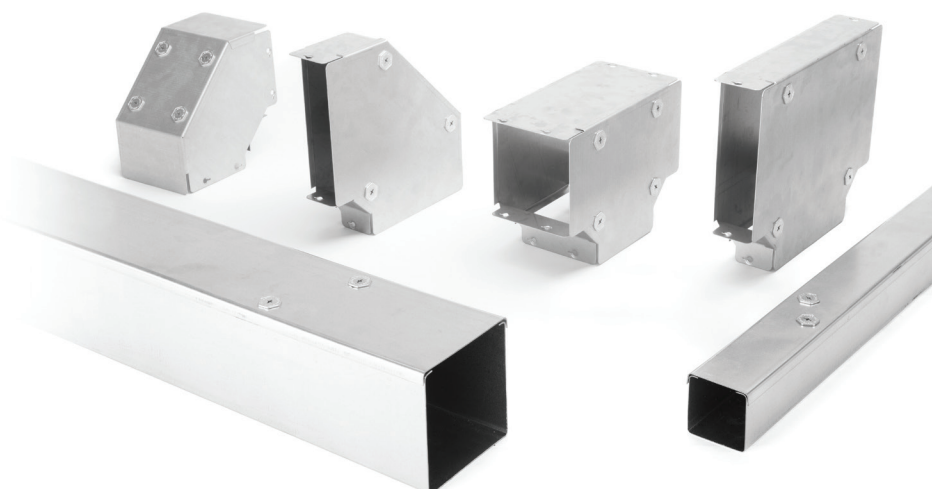
Trunking hanger



U shaped coupler

Marshall-Tufflex metal trunking is available in the following sizes as standard:

	Width x depth
50mm width:	50 x 50mm
75mm width:	75 x 75mm
100mm width:	100 x 50mm, 100 x 100mm
150mm width:	150 x 50mm, 150 x 100mm, 150 x 150mm



Approvals 

- Low Voltage Directive 2014/35/EU
- The Electrical Equipment (Safety) Regulations 2016 BS 7671:2018
- BS EN 50085-1:2005+A1:2013
- BS EN 50085-2-1:2006+A1:2011

METAL TRUNKING



Size w x d	No. of Compartments	Trunking 3m	90° gusset bend top lid	45° gusset bend top lid	90° gusset bend inside lid	45° gusset bend inside lid
------------	---------------------	-------------	-------------------------	-------------------------	----------------------------	----------------------------



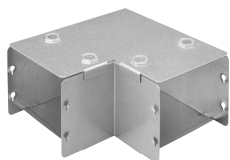
50 x 50mm	1	MTT22	MTT22GBT90	MTT22GBT45	MTT22GBI90	MTT22GBI45
	2	MTT22-2	MTT22GBT90-2	MTT22GBT45-2	MTT22GBI90-2	MTT22GBI45-2
75 x 75mm	1	MTT33	MTT33GBT90	MTT33GBT45	MTT33GBI90	MTT33GBI45
	2	MTT33-2	MTT33GBT90-2	MTT33GBT45-2	MTT33GBI90-2	MTT33GBI45-2
	3	MTT33-3	MTT33GBT90-3	MTT33GBT45-3	MTT33GBI90-3	MTT33GBI45-3
100 x 50mm	1	MTT42	MTT42GBT90	MTT42GBT45	MTT42GBI90	MTT42GBI45
	2	MTT42-2	MTT42GBT90-2	MTT42GBT45-2	MTT42GBI90-2	MTT42GBI45-2
	3	MTT42-3	MTT42GBT90-3	MTT42GBT45-3	MTT42GBI90-3	MTT42GBI45-3
100 x 100mm	1	MTT44	MTT44GBT90	MTT44GBT45	MTT44GBI90	MTT44GBI45
	2	MTT44-2	MTT44GBT90-2	MTT44GBT45-2	MTT44GBI90-2	MTT44GBI45-2
	3	MTT44-3	MTT44GBT90-3	MTT44GBT45-3	MTT44GBI90-3	MTT44GBI45-3
150 x 50mm	1	MTT62	MTT62GBT90	MTT62GBT45	MTT62GBI90	MTT62GBI45
	2	MTT62-2	MTT62GBT90-2	MTT62GBT45-2	MTT62GBI90-2	MTT62GBI45-2
	3	MTT62-3	MTT62GBT90-3	MTT62GBT45-3	MTT62GBI90-3	MTT62GBI45-3
150 x 100mm	1	MTT64	MTT64GBT90	MTT64GBT45	MTT64GBI90	MTT64GBI45
	2	MTT64-2	MTT64GBT90-2	MTT64GBT45-2	MTT64GBI90-2	MTT64GBI45-2
	3	MTT64-3	MTT64GBT90-3	MTT64GBT45-3	MTT64GBI90-3	MTT64GBI45-3
150 x 150mm	1	MTT66	MTT66GBT90	MTT66GBT45	MTT66GBI90	MTT66GBI45
	2	MTT66-2	MTT66GBT90-2	MTT66GBT45-2	MTT66GBI90-2	MTT66GBI45-2
	3	MTT66-3	MTT66GBT90-3	MTT66GBT45-3	MTT66GBI90-3	MTT66GBI45-3

The following sizes are also available to order (lead times apply).

code	size	code	size	code	size	code	size
MTT32	75 x 50mm	MTT84	200 x 100mm	MTT94	225 x 100mm	MTT124	300 x 100mm
MTT43	100 x 75mm	MTT86	200 x 150mm	MTT96	225 x 150mm	MTT126	300 x 150mm
MTT63	150 x 75mm	MTT88	200 x 200mm	MTT99	225 x 225mm	MTT128	300 x 200mm
MTT82	200 x 50mm	MTT92	225 x 50mm	MTT122	300 x 50mm	MTT129	300 x 225mm
MTT83	200 x 75mm	MTT93	225 x 75mm	MTT123	300 x 75mm	MTT1212	300 x 300mm

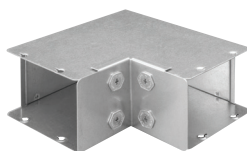
90° gusset bend outside lid	45° gusset bend outside lid	Gusset tee top lid	Gusset tee inside lid	Gusset tee outside lid	End cap	Trunking hanger	U Shaped coupler
							
MTT22GB090	MTT22GB045	MTT22GTT	MTT22GTI	MTT22GTO	MTT22EC	MTT22TH	MTT22UC
MTT22GB090-2	MTT22GB045-2	MTT22GTT-2	MTT22GTI-2	MTT22GTO-2			
MTT22GB090-3	MTT22GB045-3	MTT22GTT-3	MTT22GTI-3	MTT22GTO-3			
MTT33GB090	MTT33GB045	MTT33GTT	MTT33GTI	MTT33GTO	MTT33EC	MTT33TH	MTT33UC
MTT33GB090-2	MTT33GB045-2	MTT33GTT-2	MTT33GTI-2	MTT33GTO-2			
MTT33GB090-3	MTT33GB045-3	MTT33GTT-3	MTT33GTI-3	MTT33GTO-3			
MTT42GB090	MTT42GB045	MTT42GTT	MTT42GTI	MTT42GTO	MTT42EC	MTT42TH	MTT42UC
MTT42GB090-2	MTT42GB045-2	MTT42GTT-2	MTT42GTI-2	MTT42GTO-2			
MTT42GB090-3	MTT42GB045-3	MTT42GTT-3	MTT42GTI-3	MTT42GTO-3			
MTT44GB090	MTT44GB045	MTT44GTT	MTT44GTI	MTT44GTO	MTT44EC	MTT44TH	MTT44UC
MTT44GB090-2	MTT44GB045-2	MTT44GTT-2	MTT44GTI-2	MTT44GTO-2			
MTT44GB090-3	MTT44GB045-3	MTT44GTT-3	MTT44GTI-3	MTT44GTO-3			
MTT62GB090	MTT62GB045	MTT62GTT	MTT62GTI	MTT62GTO	MTT62EC	MTT62TH	MTT62UC
MTT62GB090-2	MTT62GB045-2	MTT62GTT-2	MTT62GTI-2	MTT62GTO-2			
MTT62GB090-3	MTT62GB045-3	MTT62GTT-3	MTT62GTI-3	MTT62GTO-3			
MTT64GB090	MTT64GB045	MTT64GTT	MTT64GTI	MTT64GTO	MTT64EC	MTT64TH	MTT64UC
MTT64GB090-2	MTT64GB045-2	MTT64GTT-2	MTT64GTI-2	MTT64GTO-2			
MTT64GB090-3	MTT64GB045-3	MTT64GTT-3	MTT64GTI-3	MTT64GTO-3			
MTT66GB090	MTT66GB045	MTT66GTT	MTT66GTI	MTT66GTO	MTT66EC	MTT66TH	MTT66UC
MTT66GB090-2	MTT66GB045-2	MTT66GTT-2	MTT66GTI-2	MTT66GTO-2			
MTT66GB090-3	MTT66GB045-3	MTT66GTT-3	MTT66GTI-3	MTT66GTO-3			

All products are supplied in pack quantities of one.



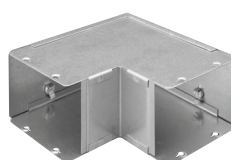
Sharp bend top lid

code	size	pack
MTT22SBT	50 x 50mm	1
MTT32SBT	75 x 50mm	1
MTT33SBT	75 x 75mm	1
MTT42SBT	100 x 50mm	1
MTT43SBT	100 x 75mm	1
MTT44SBT	100 x 100mm	1
MTT62SBT	150 x 50mm	1
MTT63SBT	150 x 75mm	1
MTT64SBT	150 x 100mm	1
MTT66SBT	150 x 150mm	1



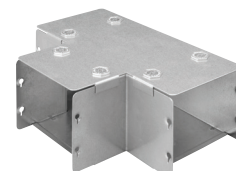
Sharp bend inside lid

code	size	pack
MTT22SBI	50 x 50mm	1
MTT32SBI	75 x 50mm	1
MTT33SBI	75 x 75mm	1
MTT42SBI	100 x 50mm	1
MTT43SBI	100 x 75mm	1
MTT44SBI	100 x 100mm	1
MTT62SBI	150 x 50mm	1
MTT63SBI	150 x 75mm	1
MTT64SBI	150 x 100mm	1
MTT66SBI	150 x 150mm	1



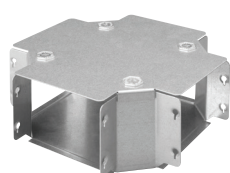
Sharp bend outside lid

code	size	pack
MTT22SBO	50 x 50mm	1
MTT32SBO	75 x 50mm	1
MTT33SBO	75 x 75mm	1
MTT42SBO	100 x 50mm	1
MTT43SBO	100 x 75mm	1
MTT44SBO	100 x 100mm	1
MTT62SBO	150 x 50mm	1
MTT63SBO	150 x 75mm	1
MTT64SBO	150 x 100mm	1
MTT66SBO	150 x 150mm	1



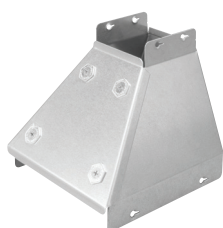
Sharp tee top lid

code	size	pack
MTT22STT	50 x 50mm	1
MTT32STT	75 x 50mm	1
MTT33STT	75 x 75mm	1
MTT42STT	100 x 50mm	1
MTT43STT	100 x 75mm	1
MTT44STT	100 x 100mm	1
MTT62STT	150 x 50mm	1
MTT63STT	150 x 75mm	1
MTT64STT	150 x 100mm	1
MTT66STT	150 x 150mm	1



Intersection box

code	size	pack
MTT22IB	50 x 50mm	1
MTT32IB	75 x 50mm	1
MTT33IB	75 x 75mm	1
MTT42IB	100 x 50mm	1
MTT43IB	100 x 75mm	1
MTT44IB	100 x 100mm	1
MTT62IB	150 x 50mm	1
MTT63IB	150 x 75mm	1
MTT64IB	150 x 100mm	1
MTT66IB	150 x 150mm	1



Reducer

code	size	pack
MTTR33-22	75 x 75mm to 50 x 50mm	1
MTTR42-22	100 x 50mm to 50 x 50mm	1
MTTR44-22	100 x 100mm to 50 x 50mm	1
MTTR44-33	100 x 100mm to 75 x 75mm	1
MTTR64-44	150 x 100mm to 100 x 100mm	1
MTTR66-33	150 x 150mm to 75 x 75mm	1
MTTR66-44	150 x 150mm to 100 x 100mm	1



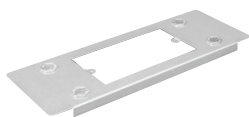
Earth bonding link

code	pack
MTTE	50



Single socket plate

code	size	pack
MTTSSP4	100mm	1
MTTSSP6	150mm	1



Double socket plate

code	size	pack
MTTDSP4	100mm	1
MTTDSP6	150mm	1



Sleeve coupler

code	size	pack
MTT22SC	50mm	2
MTT33SC	75mm	2
MTT44SC	100mm	2
MTT66SC	150mm	2



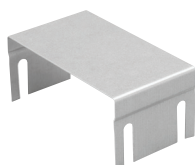
Cable retainer

code	size	pack
MTT2CR	50mm	1
MTT3CR	75mm	1
MTT4CR	100mm	1
MTT6CR	150mm	1



Flange coupler

code	size	pack
MTT22FC	50mm	2
MTT33FC	75mm	2
MTT44FC	100mm	2
MTT66FC	150mm	2



IP4X cover strap

code	size	pack
MTT2IP	50mm	1
MTT3IP	75mm	1
MTT4IP	100mm	1
MTT6IP	150mm	1



Spare Marshall-Tufflex turnbuckles

code	pack
MTTT	25



Trunking lid

code	size	pack
MTT2TL	50mm x 3m	1
MTT3TL	75mm x 3m	1
MTT4TL	100mm x 3m	1
MTT6TL	150mm x 3m	1



Spare trunking screws

code	pack
MTTS	100

METAL LIGHTING TRUNKING

Metal lighting trunking to support, distribute and organise cables for lighting circuits. Offering robust protection, the system features snap on lids for quick and easy installation.

- Supplied in 3 metre and 4.5 lengths
- 50 x 50mm
- Snap on lids for quick and easy installation
- Slide in couplers



Trunking profiles



Lighting trunking

code	size	pack
MTL3	50 x 50mm	1 x 3m
MTL45	50 x 50mm	1 x 4.5m



PVC-U lid – 2m

code	material	pack
MTLPLW	White PVC-U	1 x 2m



Metal lid – 2m

code	material	pack
MTLML	Metal	1 x 2m

Fittings



Long coupler

code	pack
MTL3LC3	1



2 way coupler top lid

code	pack
MTL2TC3	1



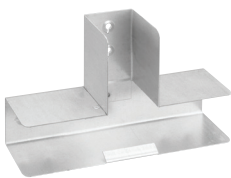
2 way coupler inside lid

code	pack
MTL2IC3	1



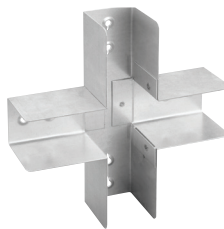
2 way coupler outside lid

code	pack
MTL2OC3	1



3 way coupler tee top lid

code	pack
MTL3TC3	1



3 way coupler cross top lid

code	pack
MTL4TC3	1



Suspension 11mm

code	pack
MTL3S11	1



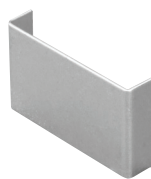
Suspension fitting

code	pack
MTL3SF	1



Blank end

code	pack
MTL3BE3	1



Cable retainer

code	pack
MTL3CR	1

METAL TRUNKING

METAL STRUT

A metal framework strut system for independent use to connect lightweight structural loads in buildings such as metal cable tray or wire basket.

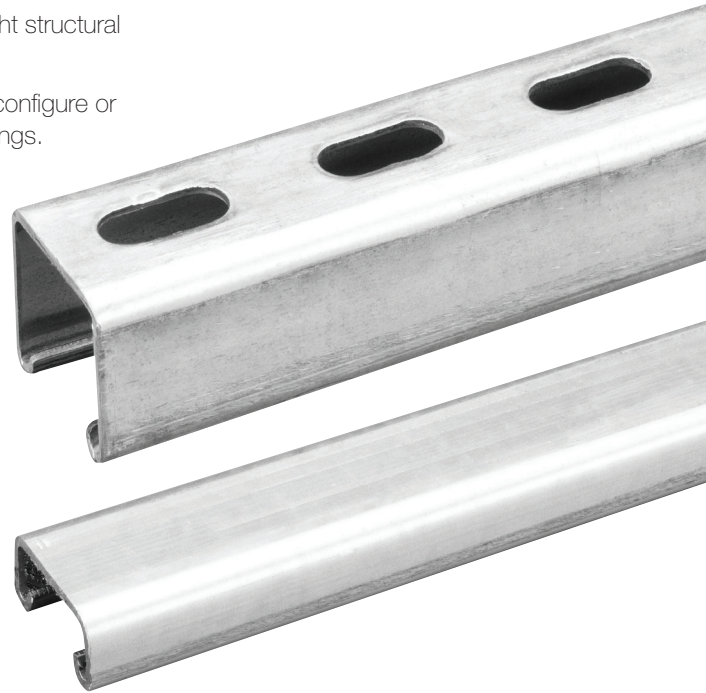
Available as slotted or plain versions, metal strut is easy to assemble, re-configure or modify and enables creation of a versatile framework within industrial settings.

- Light gauge or heavy gauge (1.5mm or 2.5mm thickness)
- Plain or slotted versions
- 3m or 6m lengths
- Two sizes – 41 x 21mm and 41 x 41mm
- Pre-galvanised steel or hot dip galvanised
- Back to back welded version available
- Standard slot sizes 28 x 14mm @ 50mm centres or 25 x 11mm @ 50mm centres

Standard finish	
PG	HD
Pre-galvanised mild steel	Hot dipped zinc coated low carbon steel strip

To indicate the finish you require, add the required finish to the end of the product code.

ie.
MTS41S325PG or
MTS41S325HD



Material and finish

Manufactured from (PG) pre-galvanised mild steel to BS EN 10326 or (HD) hot dip galvanised after manufacture to BS EN ISO 1461.

Product features

Back to back

Back to back welded channel is ideal for long spans where increased strength is required. Our back to back channels are heavy gauge (2.5mm thickness) in plain or slotted versions and in either a pre-galvanised steel or hot dip galvanised material.

Applications

Metal strut can be used in a variety of applications across different industries to provide robust structural support and stability. The system provides a sturdy framework for organising and securing components within buildings.



Approvals



- BS 7671:2018
- BS 6946

Light duty strut



Slotted strut - light duty 1.5mm

code	size	pack
MTS21S315PG*	41 x 21mm	1 x 3m
MTS41S315PG*	41 x 41mm	1 x 3m

*Light duty versions are available in pre-galvanised finish only



Plain strut - light duty 1.5mm

code	size	pack
MTS21P315PG*	41 x 21mm	1 x 3m
MTS41P315PG*	41 x 41mm	1 x 3m

Heavy duty strut



Slotted strut - heavy duty 2.5mm

code	size	pack
MTS21S325PG	41 x 21mm	1 x 3m
MTS21S625PG	41 x 21mm	1 x 6m
MTS41S325PG	41 x 41mm	1 x 3m
MTS41S625PG	41 x 41mm	1 x 6m



Plain strut - heavy duty 2.5mm

code	size	pack
MTS21P325PG	41 x 21mm	1 x 3m
MTS21P625PG	41 x 21mm	1 x 6m
MTS41P325PG	41 x 41mm	1 x 3m
MTS41P625PG	41 x 41mm	1 x 6m

Back to back strut



Slotted strut - heavy duty 2.5mm

code	size	pack
MTS41B2BS325PG	41 x 41mm	1 x 3m
MTS41B2BS625PG	41 x 41mm	1 x 6m



Plain strut - heavy duty 2.5mm

code	size	pack
MTS41B2BP325PG	41 x 41mm	1 x 3m
MTS41B2BP625PG	41 x 41mm	1 x 6m

Fittings



Cantilever arm

code	size	pack
MTS150CA	150mm	1
MTS300CA	300mm	1
MTS450CA	450mm	1
MTS600CA	600mm	1
MTS750CA	750mm	1
MTS1000CA	1000mm	1



Back to back cantilever arm

code	size	pack
MTS150B2BCA	150mm	1
MTS300B2BCA	300mm	1
MTS450B2BCA	450mm	1
MTS600B2BCA	600mm	1
MTS750B2BCA	750mm	1
MTS1000B2BCA	1000mm	1



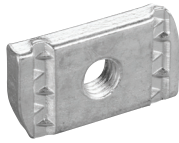
Channel nut long spring

code	size	pack
MTSM6LS	M6	100
MTSM8LS	M8	100
MTSM10LS	M10	100
MTSM12LS	M12	100



Channel nut short spring

code	size	pack
MTSM6SS	M6	100
MTSM8SS	M8	100
MTSM10SS	M10	100
MTSM12SS	M12	100



Channel nut no spring

code	size	pack
MTSM6NS	M6	100
MTSM8NS	M8	100
MTSM10NS	M10	100
MTSM12NS	M12	100



Threaded rod - 3m

code	size	pack
MTSM6ROD	M6	1
MTSM8ROD	M8	1
MTSM10ROD	M10	1
MTSM12ROD	M12	1
MTSM16ROD	M16	1
MTSM20ROD	M20	1
MTSM24ROD	M24	1



**Square plate washer
40mm x 40mm x 5mm**

code	size	pack
MTS101M6	M6	100
MTS101M8	M8	100
MTS101M10	M10	100
MTS101M12	M12	100



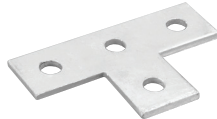
Flat plate

code	size	pack
MTS102	2 hole	1
MTS103	3 hole	1
MTS104	4 hole	1
MTS105	5 hole	1



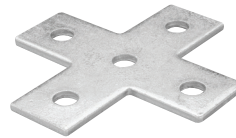
Flat L bracket - 3 hole

code	pack
MTS106	1



Flat tee bracket - 4 hole

code	pack
MTS107	1



Flat cross bracket - 5 hole

code	pack
MTS108	1



Right angle bracket - 2 hole

code	description	pack
MTS109	1 + 1	1



Right angle bracket - 3 hole

code	description	pack
MTS110	2 + 1	1



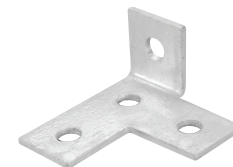
Right angle bracket - 4 hole

code	description	pack
MTS111	3 + 1	1



Right angle bracket - 4 hole

code	description	pack
MTS112	2 + 2	1



Left hand corner tee bracket - 4 hole

code	pack
MTS113	1



Right hand corner tee bracket - 4 hole

code	pack
MTS114	1



Tee left angle bracket - 3 hole

code	pack
MTS115	1



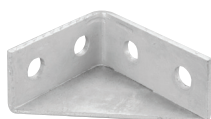
Bent tee plate - 3 hole

code	pack
MTS116	1



Flat gusset L bracket - 4 hole

code	pack
MTS117	1



Right angle gusset bracket - 4 hole

code	pack
MTS118	1



45 degree obtuse angle bracket - 2 hole

code	pack
MTS11945	1



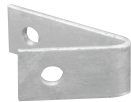
15 degree obtuse angle bracket - 2 hole

code	pack
MTS11915	1



22 degree obtuse angle bracket - 2 hole

code	pack
MTS11922	1



45 degree acute angle bracket - 2 hole

code	size	pack
MTS12045		1



Z bracket - 2 hole

code	size	pack
MTS121	41 x 21mm	1



Z bracket - 3 hole

code	size	pack
MTS122	41 x 41mm	1



Top hat bracket - 3 hole

code	size	pack
MTS123	41 x 21mm	1



Top hat bracket - 5 hole

code	size	pack
MTS124	41 x 41mm	1



Top hat bracket - 7 hole

code	size	pack
MTS125	41 x 82mm	1



Single base plate bracket

code	size	pack
MTS126		1



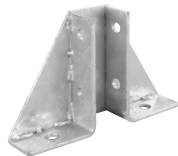
Corner case plate bracket

code	size	pack
MTS127	41mm	1



Back to back base plate bracket

code	size	pack
MTS128	41mm x 82mm	1



Gusset base plate bracket

code	size	pack
MTS129	41mm	1



Back to back gusset base plate bracket

code	size	pack
MTS130	41 x 82mm	1



Toe beam clamp

code	size	pack
MTS131		1



Large C beam clamp

code	size	pack
MTS132		1



Small C beam clamp

code	size	pack
MTS133		1



Z beam clamp

code	size	pack
MTS134		1



Window bracket

code	size	pack
MTS135	41 x 41mm	1
MTS136	41 x 21mm	1
MTS137	41 x 82mm	1



U beam clamp

code	size	pack
MTS138	41 x 41mm	1



Internal coupler

code	size	pack
MTS139	41 x 41mm	1
MTS140	41 x 21mm	1



External coupler

code	size	pack
MTS141	41 x 41mm	1
MTS142	41 x 21mm	1



End cap black

code	size	pack
MTSCAP41BK	41 x 41mm	100
MTSCAP21BK	41 x 21mm	100



End cap white

code	size	pack
MTSCAP41WH	41 x 41mm	100
MTSCAP21WH	41 x 21mm	100



Hexagonal nut

code	size	pack
MTSHEXM6	M6	100
MTSHEXM8	M8	100
MTSHEXM10	M10	100



Hexagonal set screw

code	size	pack
MTSHEXSM625	M6 x 25mm	100
MTSHEXSM630	M6 x 30mm	100
MTSHEXSM640	M6 x 40mm	100
MTSHEXSM825	M8 x 25mm	100
MTSHEXSM830	M8 x 30mm	100
MTSHEXSM840	M8 x 40mm	100
MTSHEXSM1025	M10 x 25mm	100
MTSHEXSM1030	M10 x 30mm	100
MTSHEXSM1040	M10 x 40mm	100
MTSHEXSM1225	M12 x 25mm	100
MTSHEXSM1230	M12 x 30mm	100
MTSHEXSM1240	M12 x 40mm	100



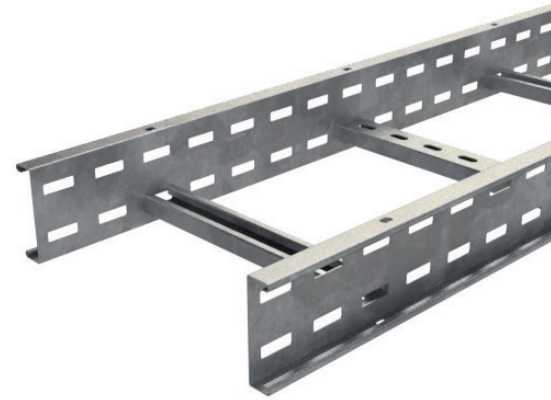
Penny washer

code	size	pack
MTSPWM625	M6 x 25mm	100
MTSPWM825	M8 x 25mm	100
MTSPWM1025	M10 x 25mm	100
MTSPWM1225	M12 x 25mm	100
MTSPWM630	M6 x 30mm	100
MTSPWM830	M8 x 30mm	100
MTSPWM1030	M10 x 30mm	100
MTSPWM1230	M12 x 30mm	100

METAL CABLE LADDER

Basor metal cable ladder is the ideal solution for routing heavy duty cables in large areas that have wide spacing between supports, as is often the case in power plants, airports and heavy industry environments.

- Product widths from 100mm to 900mm
- Product heights of 75mm, 100mm, 125mm, and 150mm.
- Greater load capacity due to rail design
- Safety edge that provides increased strength and protection for installers
- Strut-type rungs 41 x 21mm
- Hot dip galvanised steel finish
- Perforated side panel
- Compatible with and fixable to our ranges of metal strut and suspension systems



Product features

The perforated side panel allows ventilation in the event a cover is installed. In addition, the side panel enables installation in situations where cutting on-site is required, as there is no need to drill the rail to assemble the joint.

Applications

Metal cable ladder is suitable for use in heavy industry environments such as power plants, airports, tunnels, bridges, railways and underground environments.

Approvals



- EN 61537 – Cable management. Cable tray systems and cable ladder systems
- EN 50085 – Cable trunking systems and cable ducting systems for electrical installations

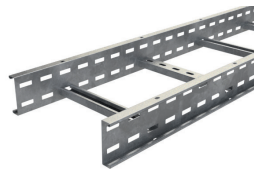


Ladder and covers



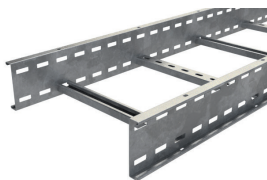
Ladder 75mm high – 1.5mm gauge

code	width x height	pack
215136	100 x 75mm	1 x 3m
215137	150 x 75mm	1 x 3m
215138	300 x 75mm	1 x 3m
215139	450 x 75mm	1 x 3m
215140	600 x 75mm	1 x 3m
215141	750 x 75mm	1 x 3m
215142	900 x 75mm	1 x 3m



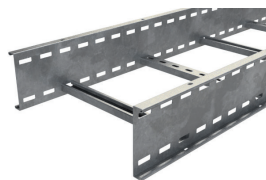
Ladder 100mm high – 1.5mm gauge

code	width x height	pack
215143	150 x 100mm	1 x 3m
215144	300 x 100mm	1 x 3m
215145	450 x 100mm	1 x 3m
215146	600 x 100mm	1 x 3m
215147	750 x 100mm	1 x 3m
215148	900 x 100mm	1 x 3m



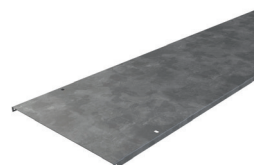
Ladder 125mm high – 2mm gauge

code	width x height	pack
215149	150 x 125mm	1 x 3m
215150	300 x 125mm	1 x 3m
215151	450 x 125mm	1 x 3m
215152	600 x 125mm	1 x 3m
215153	750 x 125mm	1 x 3m
215154	900 x 125mm	1 x 3m



Ladder 150mm high – 2mm gauge

code	width x height	pack
215155	150 x 150mm	1 x 3m
206437	300 x 150mm	1 x 3m
215156	450 x 150mm	1 x 3m
206439	600 x 150mm	1 x 3m
215157	750 x 150mm	1 x 3m
215158	900 x 150mm	1 x 3m



Ladder Cover – 1.5mm gauge

code	width	pack
209598	100mm	1 x 3m
209599	150mm	1 x 3m
209600	300mm	1 x 3m
209601	450mm	1 x 3m
209602	600mm	1 x 3m
209603	750mm	1 x 3m
209604	900mm	1 x 3m







Standard finish

HD

Hot dipped zinc coated low carbon steel strip

Lead times will apply to orders placed for metal cable ladder. Please ask the technical team for details.

See page 17 for fixing accessories

	90 degree flat bend	45 degree flat bend	Inside riser	Outside riser	Tee	Cross
Size W x H						
100 x 75mm	215184	227080	215232	215280	215328	215376
150 x 75mm	215185	227081	215233	215281	215329	215377
300 x 75mm	215186	227082	215234	215282	215330	215378
450 x 75mm	215187	227083	215235	215283	215331	215379
600 x 75mm	215188	227084	215236	215284	215332	215380
750 x 75mm	215189	227085	215237	215285	215333	215381
900 x 75mm	215190	227086	215238	215286	215334	215382
150 x 100mm	215191	227087	215239	215287	215335	215383
300 x 100mm	215192	227088	215240	215288	215336	215384
450 x 100mm	215193	227089	215241	215289	215337	215385
600 x 100mm	215194	227090	215242	215290	215338	215386
750 x 100mm	215195	227091	215243	215291	215339	215387
900 x 100mm	215196	227092	215244	215292	215340	215388
150 x 125mm	215197	227093	215245	215293	215341	215389
300 x 125mm	215198	227094	215246	215294	215342	215390
450 x 125mm	215199	227095	215247	215295	215343	215391
600 x 125mm	215200	227096	215248	215296	215344	215392
750 x 125mm	215201	227097	215249	215297	215345	215393
900 x 125mm	215202	227098	215250	215298	215346	215394
150 x 150mm	215203	227099	215251	215299	215347	215395
300 x 150mm	206962	219887	206968	206974	206980	206986
450 x 150mm	215204	219888	215252	215300	215348	215396
600 x 150mm	206964	219889	206970	206976	206982	206988
750 x 150mm	215205	227100	215253	215301	215349	215397
900 x 150mm	215206	227101	215254	215302	215350	215398

METAL CABLE LADDER

All products are supplied in pack quantities of one.

Vertical text: Joints & fixing accessories



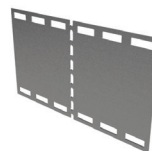
Union joint

code	height	pack
215424	75mm	1
215425	100mm	1
215426	125mm	1
206445	150mm	1



Knuckle joint

code	height	pack
215427	75mm	1
215428	100mm	1
215429	125mm	1
206447	150mm	1



Hinge joint

code	height	pack
215430	75mm	1
215431	100mm	1
215432	125mm	1
206449	150mm	1



GC nuts and bolts

code		pack
206826	Hot dip galvanised	100

For use with all fixing accessories, brackets, frames and covers



Flange clamp

code	pack
210267	1



Rising gripper

code	pack
218533	1



Hold down bracket

code	pack
200855	1

WIRE BASKET SYSTEMS

Basor Wire Basket allows simple routing of power and data cables within sections of metal basket offering maximum cable ventilation and a high level of resistance to cable movement.

The 65mm deep basket is fast coupling thanks to the integral couplers which results in reduced installation times and labour savings.

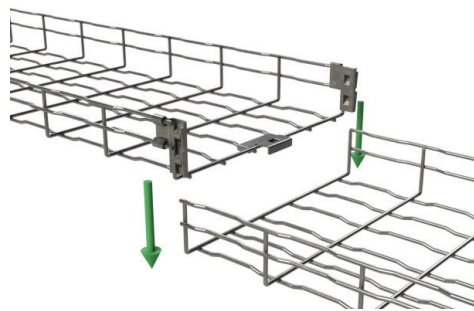
A unique rippled wire design enhances the product strength and resists flexing.



Fast-Coupling

Fast-Coupling Wire Basket is quick and simple to install:

- Two step mounting: fitting and pressure.
- The couplers at the end of the tray are used as guides in the assembly process.
- Once the couplers are connected the system offers excellent earth continuity across the joints.



4
SECONDS

Material and finish

Our wire basket is electro-zinc coated and is recommended for interior installations.

We can provide a quotation for hot dip galvanised or stainless steel finishes to suit exterior installations but these are subject to longer lead times. The below table identifies the finish suitable for the environment.

		Electro-Zinc	Hot-Dip Galvanised Steel	i316 Stainless-Steel
Interior	Dry	Recommended	Overspecified	Overspecified
	Humid	Limited Resistance	Recommended	Overspecified
	Chemical industry	Not recommended	Limited Resistance	Overspecified
	Food industry	Not recommended	Not recommended	Overspecified
Exterior	Urban	Limited Resistance	Recommended	Overspecified
	Chemical industry	Not recommended	Limited Resistance	Overspecified
	Food industry	Not recommended	Limited Resistance	Recommended

Approvals

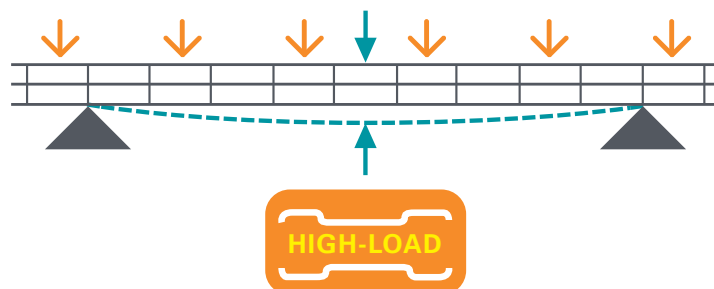


- UL Certification E358301 EN61537 – Cable Management
- IEC 61537:2006 Cable management – Cable tray systems and cable ladder systems.



Rippled design

The unique rippled design of the base of the basket allows for the easy threading of cable ties and increased load capacity with greater resistance to flexing.



WIRE BASKET

Basor Wire Basket is a popular and effective solution for installing power and data cables. Sections of the strong and lightweight basket provide a sturdy platform for the cables, supporting their weight and giving an excellent aesthetic finish.

- Ripple design offers cable ventilation and a high level of resistance to cable movement
- Simple manipulations to the wire basket can overcome complicated changes in direction
- Safety edges to prevent cable damage and personal injury
- High cable capacity
- Electro-Zinc finish
- Fire resistant to DIN 4102-12 E90



Standard finish
EZ
EZ: Electro-Zinc

Wire Basket is available in Electro-Zinc as standard.

Finish options: Hot-dip galvanised steel and stainless steel (316) are available but these are subject to minimum quantity orders and longer lead times.

65mm Height

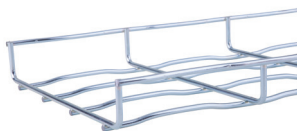


- 65mm height
- Integral couplers for quick and easy connection in just two steps and only 4 seconds!
- The position of the couplers creates a guide for fast and easy installation
- No tools required
- Reduced installation time results in saving labour costs

Fast-Coupling Wire Basket 65mm Height

code	description	dimensions (mm)			pack	
		width	height	length		
MT2/7389	60 x 65mm	60	65	3000	2 x 3m	
MT2/7248	100 x 65mm	100	65	3000	2 x 3m	
MT2/7249	150 x 65mm	150	65	3000	2 x 3m	
MT2/7250	200 x 65mm	200	65	3000	2 x 3m	
MT2/7251	300 x 65mm	300	65	3000	2 x 3m	
MT2/7394	400 x 65mm	400	65	3000	2 x 3m	
MT2/7395	500 x 65mm	500	65	3000	2 x 3m	
MT2/7396	600 x 65mm	600	65	3000	2 x 3m	

35mm Height

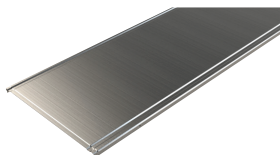


- 35mm height
- Assemble using our range of Fast Fix Clip on couplers – no bolts required

Standard Wire Basket 35mm Height

code	description	dimensions (mm)			pack	
		width	height	length		
MT2/3616	100 x 35mm	100	35	3000	2 x 3m	
MT2/3617	150 x 35mm	150	35	3000	2 x 3m	
MT2/3618	200 x 35mm	200	35	3000	2 x 3m	
MT2/3619	300 x 35mm	300	35	3000	2 x 3m	

Covers

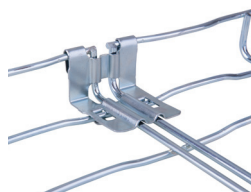


- Cover eliminates dirt and dust build-up on cable
- Provides physical protection for cables
- Galvanised steel finish
- To mount the cover no accessories are needed – fixed by pressure

Wire Basket Cover

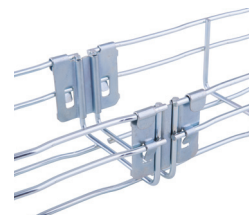
code	description	dimensions (mm)		weight (kg) per metre	pack
		width	length		
MT2/1312	Cover 100mm	102	3000	0.55	2 x 3m
MT2/1313	Cover 150mm	152	3000	0.76	2 x 3m
MT2/1314	Cover 200mm	202	3000	0.98	2 x 3m
MT2/1316	Cover 300mm	302	3000	1.55	2 x 3m
MT2/1317	Cover 400mm	402	2000	2.19	2 x 2m
MT2/1318	Cover 500mm	502	2000	3.11	2 x 2m
MT2/1319	Cover 600mm	602	2000	3.95	2 x 2m

WIRE BASKET



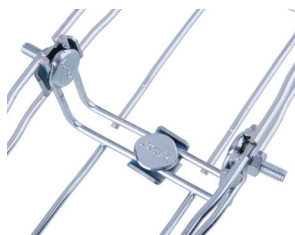
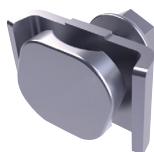
Fast fix clip on coupler - 35mm

code	pack
MT2/7271	10



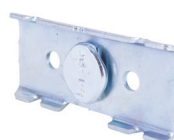
Fast fix clip on coupler - 65mm

code	pack
MT2/6217	10



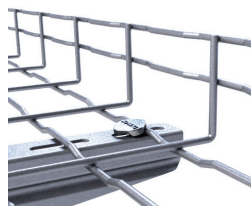
Basket connector bolt

code	pack
MT2/4364	10



Basket connector bracket

code	pack
MT2/4919	10



Nut and bolt

code	pack
MT2/4362	10



Ceiling support plate

code	pack
MT2/2064	10

Please note: these are sold in singles; two are needed for fittings as per the image. Nut and bolt are not supplied.



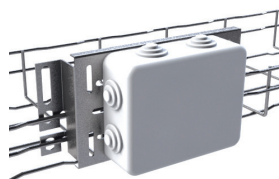
Wall bracket support plate

code	pack
MT2/0355	10



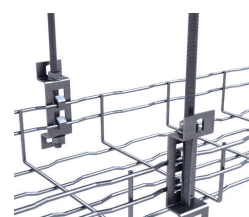
Conduit feed plate

code	pack
MT2/18798	20



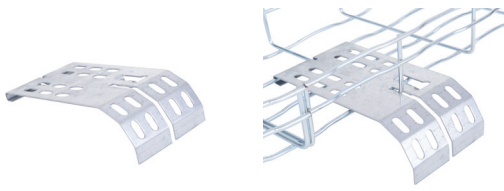
Universal box plate

code	description	pack
MT2/0358	Large universal box plate	4
MT2/0359	Small universal box plate	8

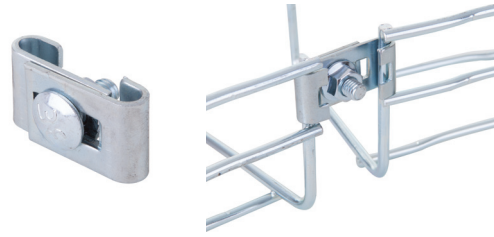


Side support clip 65mm

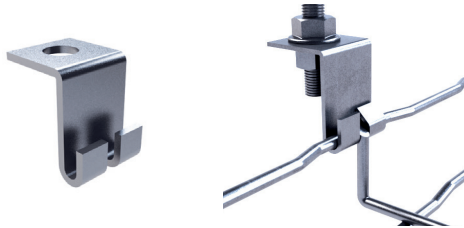
code	pack
MT2/0360	10



Cable drop out plate
code _____ pack
MT2/6451 _____ 1

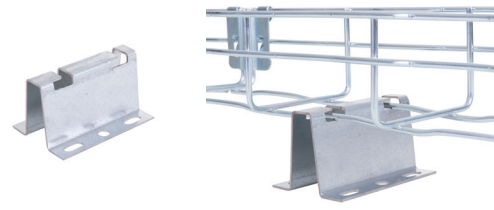


Bend connector bolt
code _____ pack
MT2/5059 _____ 1



Side support clip
code _____ pack
MT2/5724 _____ 1

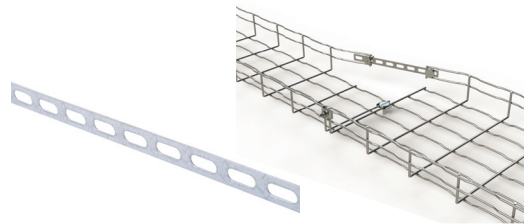
Accepts 10mm mounting stud



Floor bracket
code _____ pack
MT2/5590 _____ 1



Lighting attachment plate
code _____ pack
MT2/5906 _____ 1



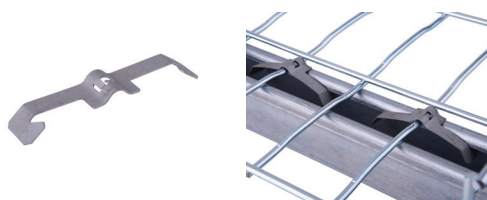
Multi-union joint
code _____ pack
MT2/0357 _____ 1



Cutting tool
code _____ pack
MT2/5066 _____ 1



Spray paint 98% zinc
code _____ pack
MT2/7224 _____ 1

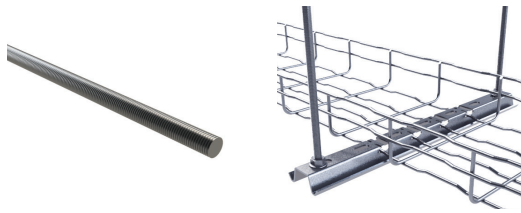


Clip to secure basket to strut
code _____ pack
MT2/10284 _____ 10



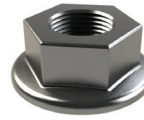
Variable support bracket
code _____ pack
MT2/6477 _____ 10

Fixing accessories



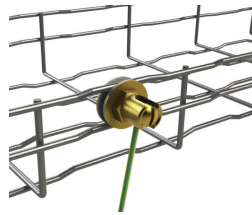
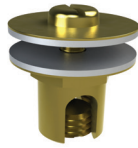
M8 threaded rod

code	pack
MT2/3397	10 x 1m



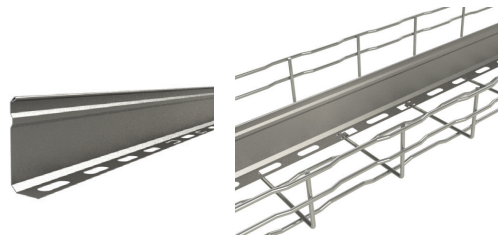
M8 nut

code	pack
2/17553	10



Earth bonding connector

code	pack
MT2/6797	10



Self fixing dividing fillet

code	description	pack
MT2/3476	35mm	10 x 3m
MT2/2066	60mm	10 x 3m

Attaches to wire basket using self fixing clip

WIRE BASKET

Wall brackets



Fast fix wall bracket

code	description	pack
MT2/7230	100mm	1
MT2/7231	150mm	1
MT2/7232	200mm	1
MT2/7233	300mm	1
MT2/7234	400mm	1



Wall bracket supporting piece

code	pack
MT2/6240	1

Ceiling brackets



Fast fix ceiling bracket

code	description	height	pack
MT2/7235	100mm	175mm	1
MT2/7236	150mm	175mm	1
MT2/7237	200mm	175mm	1
MT2/7238	300mm	175mm	1

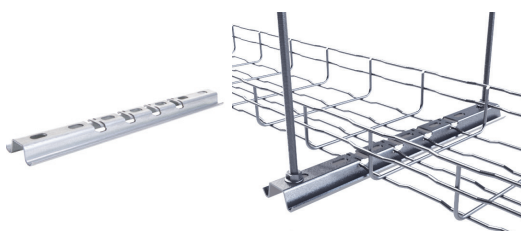
Floor brackets



Stand off bracket

code	description	pack
MT2/1046	100mm	1
MT2/1047	150mm	1
MT2/1048	200mm	1
MT2/1049	300mm	1
MT2/3413	400mm	1
MT2/3414	500mm	1
MT2/3415	600mm	1

Suspension frames



Fast fix suspension frame base (rods sold separately)

code	description	pack
MT2/3630	100mm	1
MT2/1073	150mm	1
MT2/1074	200mm	1
MT2/1076	300mm	1
MT2/3629	400mm	1
MT2/1077	500mm	1
MT2/5941	600mm	1



Support strut leg

code	leg height	pack
MT2/5602	142mm	1

Cablelay Matting



Cablelay Matting Class 0

code	width	pack
WBM0660	60mm	1 x 30m
WBM06100	100mm	1 x 30m
WBM06150	150mm	1 x 30m
WBM06200	200mm	1 x 30m
WBM06300	300mm	1 x 30m
WBM06400	400mm	1 x 30m
WBM06500	500mm	1 x 30m
WBM06600	600mm	1 x 30m



Cablelay Tape

code	description	pack
WBM0T	LSOH	1 x 15m roll

Cablelay Matting

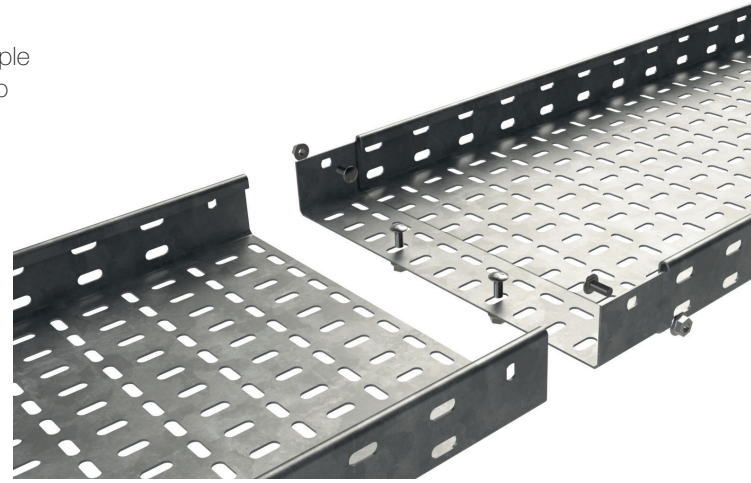
Cablelay is laid within lengths of wire basket or tray to protect cables from protrusions, sharp edges, rough surfaces and kinking ridges thus maintaining the integrity of the data cables.

METAL CABLE TRAY SYSTEMS

The Basor range of fast coupling metal cable tray allows for the simple routing and support of power and data cables. Strong and simple to install, metal cable tray is available in light, medium and heavy-duty profiles and features a pre-galvanised finish.

The sections of metal tray simply interconnect and bolt together for quick and easy installation, saving time and eliminating the need for separate couplers.

3E Basor
CABLE TRAY SPECIALIST



Applications

Metal cable tray is ideally suited for installation into many commercial and industrial environments, permitting the upgrade, expansion, re-configuration or relocation of power and data network as required.

- Industrial - Manufacturing, Data Centres, Warehouses and Distribution Centres.
- Commercial - Offices and Retail Outlets.
- Public Sector – Education and Healthcare in power and data areas or above suspended ceilings.



Material and finish

Metal cable tray is Pre-Galvanised steel and is recommended for interior installations.

We can provide a quotation for hot dip galvanised or stainless steel (i316) finishes to suit exterior installations but these are subject to longer lead times.

Product features

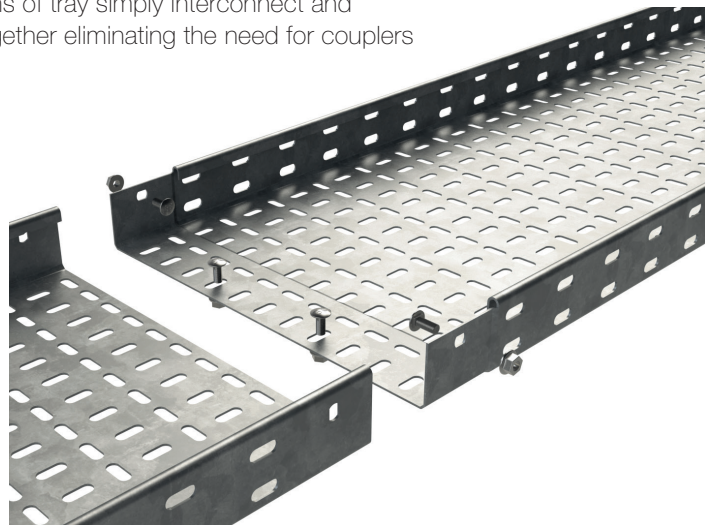
Installation is quick and easy when using the adjustable riser.

The adjustable riser can be simply formed to the exact height and angle required.



Tray connection is quick and simple

Sections of tray simply interconnect and bolt together eliminating the need for couplers



Approvals



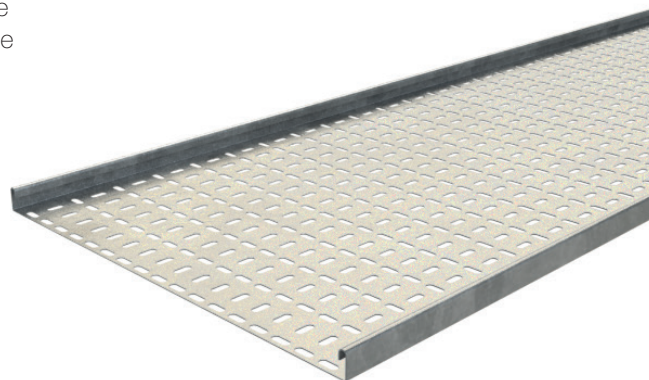
- EN 61537 – Cable management. Cable tray systems and cable ladder systems
- EN 50085 – Cable trunking systems and cable ducting systems for electrical installations



METAL CABLE TRAY

Basor metal cable tray is ideal for the support of power and data cables in commercial and industrial installations. Sections of metal tray are simply bolted together for quick and easy installation, saving time and eliminating the need for separate couplers.

- Light, medium and heavy duty
- Product widths of 50 to 600mm
- Fast-coupling
- Reduced installation time, saving labour costs
- Pre-galvanised finish
- No couplers required
- Full range of fittings

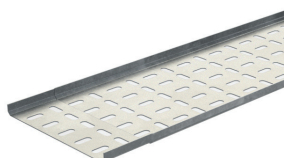


Standard finish
PG
PG: Pre-galvanised

Metal tray is available pre-galvanised as standard.

Hot-dip galvanised steel and stainless steel (316) are available but these are subject to minimum quantity orders and longer lead times.

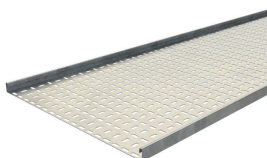
Cable tray



Cable tray - light duty

code	width x height	pack
203658 *	50 x 12mm	1 x 3m
203659	75 x 12mm	1 x 3m
203660	100 x 12mm	1 x 3m
203661	150 x 12mm	1 x 3m
203662	225 x 12mm	1 x 3m
203663	300 x 12mm	1 x 3m

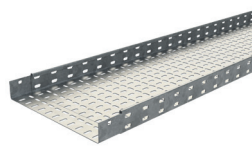
* 50 x 12mm not available as fast coupling - couplers are required.



Cable tray - medium duty

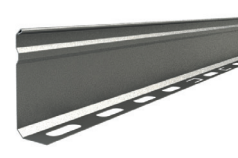
code	width x height	pack
203708 *	50 x 25mm	1 x 3m
203709	75 x 25mm	1 x 3m
203710	100 x 25mm	1 x 3m
203711	150 x 25mm	1 x 3m
203712	225 x 25mm	1 x 3m
203713	300 x 25mm	1 x 3m
203714	450 x 25mm	1 x 3m
203715	600 x 25mm	1 x 3m

* 50 x 25mm not available as fast coupling - couplers are required.



Cable tray - heavy duty

code	width x height	pack
203785	75 x 50mm	1 x 3m
203786	100 x 50mm	1 x 3m
203787	150 x 50mm	1 x 3m
203788	225 x 50mm	1 x 3m
203789	300 x 50mm	1 x 3m
203790	450 x 50mm	1 x 3m
203791	600 x 50mm	1 x 3m



Divider profile 3m

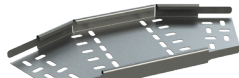
code	pack
MT2/3476	10 x 3m

Light duty fittings



90 degree flat bend

code	width	pack
204321	50mm	1
203669	75mm	1
203670	100mm	1
203671	150mm	1
203672	225mm	1
203673	300mm	1



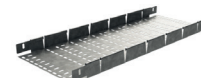
45 degree flat bend

code	width	pack
225465	50mm	1
225466	75mm	1
225467	100mm	1
225468	150mm	1
225469	225mm	1
225470	300mm	1



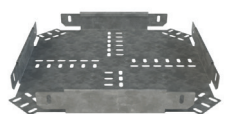
Equal tee

code	width	pack
203688	50mm	1
203689	75mm	1
203690	100mm	1
203691	150mm	1
203692	225mm	1
203693	300mm	1



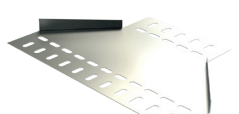
Adjustable riser

code	width	pack
204229	50mm	1
204230	75mm	1
204231	100mm	1
204232	150mm	1
204233	225mm	1
204234	300mm	1



4-way equal cross

code	width	pack
203698	50mm	1
203699	75mm	1
203700	100mm	1
203701	150mm	1
203702	225mm	1
203703	300mm	1



Reducer

code	width	pack
226033	150 x 50mm	1
226034	300 x 150mm	1

Medium duty fittings



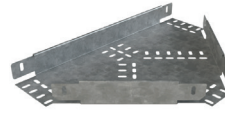
90 degree flat bend

code	width	pack
203745	50mm	1
203746	75mm	1
203747	100mm	1
203748	150mm	1
203749	225mm	1
203750	300mm	1
203751	450mm	1
203752	600mm	1



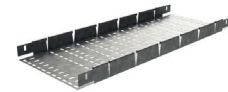
45 degree flat bend

code	width	pack
225471	50mm	1
225472	75mm	1
225473	100mm	1
225474	150mm	1
225475	225mm	1
225476	300mm	1
225477	450mm	1
225478	600mm	1



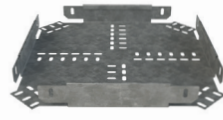
Equal tee

code	width	pack
203765	50mm	1
203766	75mm	1
203767	100mm	1
203768	150mm	1
203769	225mm	1
203770	300mm	1
203771	450mm	1
203772	600mm	1



Adjustable riser

code	width	pack
204239	50mm	1
204240	75mm	1
204241	100mm	1
204242	150mm	1
204243	225mm	1
204244	300mm	1
204245	450mm	1
204246	600mm	1



4-way equal cross

code	width	pack
203775	50mm	1
203776	75mm	1
203777	100mm	1
203778	150mm	1
203779	225mm	1
203780	300mm	1
203781	450mm	1
203782	600mm	1



Reducer

code	width	pack
226035	150 x 50mm	1
226036	300 x 150mm	1
226037	300 x 225mm	1
226038	450 x 300mm	1
226039	600 x 300mm	1

Heavy duty fittings



90 degree flat bend

code	width	pack
203811	75mm	1
203812	100mm	1
203813	150mm	1
203814	225mm	1
203815	300mm	1
203816	450mm	1
203817	600mm	1



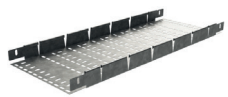
45 degree flat bend

code	width	pack
225481	75mm	1
225482	100mm	1
225483	150mm	1
225484	225mm	1
225485	300mm	1
225486	450mm	1
225487	600mm	1



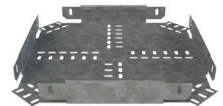
Equal tee

code	width	pack
203829	75mm	1
203830	100mm	1
203831	150mm	1
203832	225mm	1
203833	300mm	1
203834	450mm	1
203835	600mm	1



Adjustable riser

code	width	pack
204249	75mm	1
204250	100mm	1
204251	150mm	1
204252	225mm	1
204253	300mm	1
204254	450mm	1
204255	600mm	1



4-way equal cross

code	width	pack
203838	75mm	1
203839	100mm	1
203840	150mm	1
203841	225mm	1
203842	300mm	1
203843	450mm	1
203844	600mm	1



Reducer

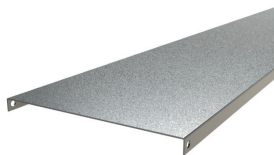
code	width	pack
226040	300 x 150mm	1
226041	300 x 225mm	1
226042	450 x 300mm	1
226043	600 x 300mm	1

See next page for fixing accessories and fittings.



Support strut legs with suspension frame.

Fixing accessories



Tray cover

code	width	pack
220067	50mm	1 x 2m
215521	75mm	1 x 3m
215522	100mm	1 x 3m
215523	150mm	1 x 3m
215524	225mm	1 x 3m
215525	300mm	1 x 3m
215526	450mm	1 x 3m
215527	600mm	1 x 3m



Cover fixing clamp

code	height	pack
214474	12mm	100
214476	25mm	100



Fish plate

code	width	pack
214480	75mm	1
214481	100mm	1
214482	150mm	1
214483	225mm	1
214484	300mm	1
214485	450mm	1
214486	600mm	1



Inside splice 12/25/50mm

code	height	pack
203800	50mm	1



Outside splice

code	height	pack
203724	25mm	1
203801	50mm	1



GC nuts and bolts

code		pack
206826	Hot dip galvanised	100

For use with all fixing accessories, brackets and frames

Fittings



Ceiling bracket (height 175mm)

code	description	pack
MT2/7235	100mm	1
MT2/7236	150mm	1
MT2/7237	200mm	1
MT2/7238	300mm	1



Wall bracket

code	description	pack
MT2/7230	100mm	1
MT2/7231	150mm	1
MT2/7232	200mm	1
MT2/7233	300mm	1
MT2/7234	400mm	1



Wall bracket supporting piece

code	pack
MT2/6240	1



Suspension frame base (rods sold separately)

code	description	pack
MT2/3630	100mm	1
MT2/1073	150mm	1
MT2/1074	200mm	1
MT2/1076	300mm	1
MT2/3629	400mm	1
MT2/1077	500mm	1
MT2/5941	600mm	1



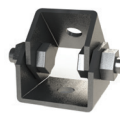
Support strut leg

code	leg height	pack
MT2/5602	142mm	1



Stand off bracket

code	description	pack
MT2/1046	100mm	1
MT2/1047	150mm	1
MT2/1048	200mm	1
MT2/1049	300mm	1
MT2/3413	400mm	1
MT2/3414	500mm	1
MT2/3415	600mm	1



Variable support bracket

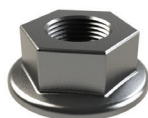
code	pack
MT2/6477	10



M8 threaded rod

code	pack
MT2/3397	10 x 1m

For use with suspension frame



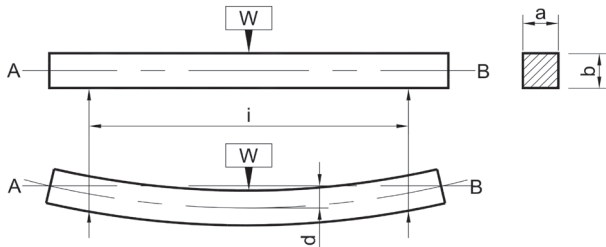
M8 nut

code	pack
2/17553	10

Metal Trunking

Deflection Test

The data shown below was gathered in tests by manufacturer and is given in good faith. It does not, however, constitute a warranty nor imply any guarantee.



Part code	a x b (mm)	Kg/m	Initial Reading (mm)	Final Reading (mm)	Deflection (mm)	Deflection %
MMT22	50 x 50	2.50	219.5	220.5	1.0	0.050
MMT23	75 x 50	3.75	222.5	222.5	0.0	0.000
MMT33	75 x 75	5.63	196.5	198.0	1.5	0.075
MMT42	100 x 50	5.00	220.5	222.5	2.0	0.100
MMT43	100 x 75	7.50	196.5	198.0	1.5	0.075
MMT44	100 x 100	10.00	172	172.0	0.5	0.025
MMT62	150 x 50	7.50	222.5	223.5	1.0	0.050
MMT63	150 x 75	11.25	197.5	198.0	0.5	0.025
MMT64	150 x 100	15.00	174.5	172.5	2.0	0.100
MMT65	150 x 150	22.50	172.5	171.5	0.5	0.025

Cable Capacity (maximum no. of cables 600/1000V PVC insulation)

Part code	Cable Size (CSA mm ²)										
	1.5	2.5	4	6	10	16	25	35	50	70	95
MMT22	120	82	62	48	29	21	14	11	8	6	4
MMT23	180	123	93	73	44	32	21	16	12	9	6
MMT33	275	188	142	111	67	49	32	25	18	14	10
MMT42	243	165	125	98	59	43	28	22	16	12	9
MMT43	370	253	192	150	90	66	43	34	24	19	13
MMT44	494	337	256	200	120	88	57	45	33	25	18
MMT62	359	245	186	145	87	64	41	33	24	18	13
MMT63	551	376	285	223	134	99	64	50	36	28	20
MMT64	743	507	385	301	181	133	86	68	49	38	27
MMT65	1127	769	584	457	274	202	131	103	75	57	42

Metal Strut

Load Characteristics

Light Duty Slotted Strut 41 x 21cm

Span or Column Unsupported Length in mm	Uniform Load at 175N/mm ² Stress kg	Deflection in mm at 175Nmm ²	Uniform Load at Maximum Deflection of 1/200th Span kg.	Uniform Load at Maximum Deflection of 1/360th Span kg.	Maximum Load of Column Loaded @ Centroid kg.
250	395	2	-	-	-
500	201	2.6	195	108	2039
750	134	5.5	91	51	1162
1000	100	9.6	15.1	29	681
1250	80	15.1	33	52	443
1500	67	22.4	22	12	310
1750	53	24.79	16	9	-
2000	50	41.1	12	7	-
2250	42	50.1	10	6	-
2500	40	68.2	7	4	-
2750	33	76.2	6	4	-
3000	31	105	5	3	-

Light Duty Plain Strut 41 x 21cm

Span or Column Unsupported Length in mm	Uniform Load at 175N/mm ² Stress kg	Deflection in mm at 175Nmm ²	Uniform Load at Maximum Deflection of 1/200th Span kg.	Uniform Load at Maximum Deflection of 1/360th Span kg.	Maximum Load of Column Loaded @ Centroid kg.
250	395	2	-	-	-
500	201	2.6	195	108	2039
750	134	5.5	91	51	1162
1000	100	9.6	15.1	29	681
1250	80	15.1	33	52	443
1500	67	22.4	22	12	310
1750	53	24.7	16	10	-
2000	50	41.1	12	7	-
2250	42	51.2	9	8	-
2500	40	68.2	7	4	-
2750	33	78.7	6	3	-
3000	31	105	5	3	-

Light Duty Slotted Strut 41 x 41mm

Span or Column Unsupported Length in mm	Uniform Load at 175N/mm ² Stress kg	Deflection in mm at 175Nmm ²	Uniform Load at Maximum Deflection of 1/200th Span kg.	Uniform Load at Maximum Deflection of 1/360th Span kg.	Maximum Load of Column Loaded @ Centroid kg.
250	703	2	-	-	3250
500	608	2.3	-	370	3179
750	405	3	-	277	3041
1000	304	4.8	-	175	2732
1250	243	7.4	208	116	2153
1500	203	10.2	146	81	1601
1750	171	13.2	109	59	1305
2000	152	18.7	81	45	941
2250	138	21.6	66	36	763
2500	122	28.3	51	29	613
2750	106	31.4	43	24	516
3000	101	41.2	35	19	430

Light Duty Plain Strut 41 x 41mm

Span or Column Unsupported Length in mm	Uniform Load at 175N/mm ² Stress kg	Deflection in mm at 175Nmm ²	Uniform Load at Maximum Deflection of 1/200th Span kg.	Uniform Load at Maximum Deflection of 1/360th Span kg.	Maximum Load of Column Loaded @ Centroid kg.
250	703	2	-	-	3250
500	608	2.3	-	370	3179
750	405	3	-	277	3041
1000	304	4.8	-	175	2732
1250	243	7.4	208	116	2153
1500	203	10.2	146	81	1601
1750	171	13.2	109	59	-
2000	152	18.7	81	45	-
2250	138	21.6	66	36	-
2500	122	28.3	51	29	-
2750	106	31.4	43	24	-
3000	101	41.2	35	19	-

Heavy Duty Slotted Strut 41 x 21mm

Span or Column Unsupported Length in mm	Uniform Load at 175N/mm ² Stress kg	Deflection in mm at 175Nmm ²	Uniform Load at Maximum Deflection of 1/200th Span kg.	Uniform Load at Maximum Deflection of 1/360th Span kg.	Maximum Load of Column Loaded @ Centroid kg.	Maximum Load of Column Loaded @ Slot Face kg.
250	508	0.5	-	-	-	-
500	254	2.01	-	174	-	-
750	169	4.54	139	77	-	-
1000	127	8.07	78	43	-	-
1250	101	12.61	50	27	-	-
1500	84	18.71	34	-	-	-
1750	72	24.73	25	-	-	-
2000	63	32.3	-	-	-	-

Heavy Duty Plain Strut 41 x 21cm

Span or Column Unsupported Length in mm	Uniform Load at 175N/mm ² Stress kg	Deflection in mm at 175Nmm ²	Uniform Load at Maximum Deflection of 1/200th Span kg.	Uniform Load at Maximum Deflection of 1/360th Span kg.	Maximum Load of Column Loaded @ Centroid kg.
250	553	0.45	-	-	3993
500	276	1.81	-	212	3379
750	184	4.07	169	94	2198
1000	138	7.24	95	53	1353
1250	110	11.32	61	33	896
1500	92	16.3	42	23	439
1750	79	22.19	31	20	-
2000	73	40.2	19	11	-
2250	68	52.2	16	9	-
2500	62	65.7	12	7	-
2750	56	73.7	10	5	-
3000	52	96.4	8	4	-

TECHNICAL INFORMATION

Heavy Duty Slotted Strut 41 x 41 cm

Span or Column Unsupported Length in mm	Uniform Load at 175N/mm ² Stress kg	Deflection in mm at 175Nmm ²	Uniform Load at Maximum Deflection of 1/200th Span kg.	Uniform Load at Maximum Deflection of 1/360th Span kg.	Maximum Load of Column Loaded @ Centroid kg.	Maximum Load of Column Loaded @ Slot Face kg.
250	1638	70.23	-	-	5351	1660
500	819	1.05	-	-	5100	1635
750	546	2.35	-	483	4412	1557
1000	409	4.18	-	271	3284	1389
1250	327	6.54	313	174	2436	1211
1500	273	8.41	2.17	120	1899	1062
1750	234	12.81	159	88	1546	941
2000	204	16.73	122	67	1297	843
2250	182	21.18	96	53	1113	761
2500	163	26.15	78	43	970	691
2750	148	31.64	64	35	-855	-631
3000	136	37.65	54	30	-761	-578

Heavy Duty Plain Strut 41 x 41 cm

Span or Column Unsupported Length in mm	Uniform Load at 175N/mm ² Stress kg	Deflection in mm at 175Nmm ²	Uniform Load at Maximum Deflection of 1/200th Span kg.	Uniform Load at Maximum Deflection of 1/360th Span kg.	Maximum Load of Column Loaded @ Centroid kg.	Maximum Load of Column Loaded @ Slot Face kg.
250	1769	0.23	-	-	5869	1693
500	884	0.95	-	-	5379	1650
750	589	2.15	-	571	4479	1554
1000	442	3.82	-	321	3373	1395
1250	353	5.97	-	205	2556	1232
1500	294	8.6	257	142	2020	1093
1750	252	11.7	188	104	1656	976
2000	221	15.29	144	80	1395	879
2250	196	19.35	114	63	1198	797
2500	176	23.89	92	51	1044	725
2750	160	28.91	76	42	-919	-663
3000	147	34.4	64	35	-816	-607

Heavy Duty Slotted Back to Back Strut

Span or Column Unsupported Length in mm	Uniform Load at 175N/mm ² Stress kg	Deflection in mm at 175Nmm ²	Uniform Load at Maximum Deflection of 1/200th Span kg.	Uniform Load at Maximum Deflection of 1/360th Span kg.	Maximum Load of Column Loaded @ Centroid kg.	Maximum Load of Column Loaded @ Slot Face kg.
250	-	-	-	-	11952	2740
500	-	-	-	-	11682	2731
750	1636	1.21	-	-	11186	2700
1000	1225	2.15	-	-	10451	2658
1250	980	3.36	-	-	9305	2583
1500	818	4.84	-	703	7790	2481
1750	7.01	6.59	-	517	6293	2287
2000	610	8.62	-	395	5068	2103
2250	544	10.89	-	310	4127	1920
2500	488	13.45	455	251	3410	1746
2750	448	16.27	374	208	2858	15.84
3000	410	19.37	316	175	-2427	-1431

Heavy Duty Back to Back Plain Strut

Span or Column Unsupported Length in mm	Uniform Load at 175N/mm ² Stress kg	Deflection in mm at 175Nmm ²	Uniform Load at Maximum Deflection of 1/200th Span kg.	Uniform Load at Maximum Deflection of 1/360th Span kg.	Maximum Load of Column Loaded @ Centroid kg.	Maximum Load of Column Loaded @ Slot Face kg.
250	-	-	-	-	11952	2880
500	-	-	-	-	11682	2864
750	1670	1.21	-	-	11186	2833
1000	1253	2.15	-	-	10451	2783
1250	1002	3.36	-	-	9305	2695
1500	835	4.84	-	718	7790	2551
1750	716	6.59	-	527	6293	2367
2000	626	8.62	-	404	5068	2170
2250	556	10.89	-	319	4127	1977
2500	501	13.45	465	258	3410	1796
2750	455	16.27	384	213	2858	1630
3000	417	19.37	323	179	-2427	-1480

Wire Basket

Useful area

Base Width	Standard Basket 35mm Height*		Fast Coupling 65mm Height	
	in ²	cm ²	in ²	cm ²
60	-	-	3.57	23
100	4.18	27	7.29	47
150	6.51	42	11.63	75
200	8.99	58	15.81	102
300	13.80	89	24.34	157
400	-	-	32.86	212
500	-	-	41.39	267
600	-	-	49.91	322

*Please note our 35mm wire basket does not have integral couplers

Metal Cable Ladder

Safe working load

Ladder height	Support Spacing (m)					
	2	2.5	3	4	5	6
75mm	260	167	116			
100mm	468	300	208	117	75	
125mm		524	364	205	131	91
150mm			472	265	170	118

Metal Cable Tray

Useful area

Base Width	Light duty cable tray			Medium duty cable tray			Heavy duty cable tray		
	Height	Gauge	Filling Load	Height	Gauge	Filling Load	Height	Gauge	Filling Load
50mm	12mm	0.8mm	1.0kg/m	25mm	0.7mm	2.5kg/m	-	-	-
75mm	12mm	0.8mm	1.8kg/m	25mm	0.7mm	4.0kg/m	50mm	0.8mm	8.3kg/m
100mm	12mm	0.8mm	2.3kg/m	25mm	0.7mm	5.3kg/m	50mm	0.8mm	113kg/m
150mm	12mm	0.8mm	3.5kg/m	25mm	0.8mm	8.3kg/m	50mm	0.8mm	17.5kg/m
225mm	12mm	0.8mm	5.5kg/m	25mm	0.8mm	12.5kg/m	50mm	1.2mm	26.3kg/m
300mm	12mm	1.2mm	11.8kg/m	25mm	1.0mm	16.8kg/m	50mm	1.2mm	35.3kg/m
450mm	-	-	-	25mm	1.2mm	25.5kg/m	50mm	1.5mm	53.3kg/m
600mm	-	-	-	25mm	1.2mm	34.0kg/m	50mm	1.5mm	71.3kg/m

Marshall-Tufflex Ltd

55-65 Castleham Road
St Leonards on Sea
East Sussex
TN38 9NU
United Kingdom

T +44 (0)1424 856600
E sales@marshall-tufflex.com
www.marshall-tufflex.com

Technical Hotline:
+44 (0)1424 856688



Collect your order from our branches:

Watford (WD18 0EZ)
Manchester (M26 1GG)
Hastings (TN38 9NU)

Republic of Ireland distributor

Core Distribution Ireland
17b Goldenbridge Industrial Estate
Tyrconnell Road, Inchicore
Dublin 8, D08 WD50

T +353 (0)1453 7033

E sales@coreelectrical.ie

Northern Ireland distributor

Core Distribution Northern Ireland
Unit 4 Duncrue Industrial Park
Duncrue Road
Belfast, BT3 9BP

T +44 (0)28 900 200 66

E info@coreelectrical.com

In pursuance of our policy of continued product improvement Marshall-Tufflex reserve the right to change the design or specification of its products without notification.

**UK OWNED
UK MANUFACTURER**

