

ORDERING INFORMATION

British CT Faceplates:

The CT series British faceplates are compatible with British standards (85mm x 85mm) and are designed to work with our complete line of CT couplers.



CTE2-FP-(XX)
Single gang British style faceplate
for one coupler



CTE4-FP22-(XX)
Single gang British style faceplate
for two couplers



CTE4-FP-(XX)
Double gang British style faceplate
for two couplers

Use (XX) to specify color: 02 = white, 82 = alpine white

International CT Adapters:



CTE-A-(XX)
50mm x 50mm adapter for one
coupler



CTE-45-(XX)L
45mm x 45mm adapter for one
coupler



Use (XX) to specify color: 02 = white, 82 = alpine white

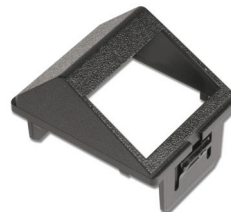
TERA®-MAX® Adapters for CT Faceplates:



CTE-MXA-01-(XX)
Angled CT adapter for one
UTP MAX module or
TERA outlet



CTE-MXA-02-(XX)
Angled CT adapter for two
UTP MAX modules or
TERA outlets



CTE-HZA-02-(XX)
Horizontal CT adapter for two UTP
MAX modules or
TERA outlets



Use (XX) to specify color:
01 = black, 02 = white

Use (XX) to specify color: 02 = white, 20 = ivory