



A RIPLEY® BRAND

# Kevlar® & Electronics Cutters

Make Cable Preparation Easier with Our Line of Durable Shears

## KS-2 Series

Fiber Optic Kevlar® Shears

- Durable, lightweight & ergonomic shears ideal for cutting Kevlar® strength fibers & other materials
- Single micro-serrated blade reduces slippage & produces clean cuts every time
- Blades are constructed from high-carbon molybdenum & vanadium steel to ensure longevity
- Optional protective hard tool pouch with belt loop is available to carry the tool safely



MODEL	PART #	CUT LENGTH	LENGTH	WEIGHT
KS-2 Shears Only	MC01-7000	0.95"	6"	2.8 oz
KS-2 Shears & Tool Pouch	MC01-7001	(24.13 mm)	(152.4 mm)	(79 g)
KS-2 Tool Pouch Only	MC01-7500	N/A	N/A	N/A

## KS-1 Series

Fiber Optic Kevlar® Shears

- Durable, lightweight & ergonomic shears ideal for cutting Kevlar® strength fibers & other materials
- Single micro-serrated blade reduces slippage & produces clean cuts every time
- Blades are constructed from high-carbon molybdenum & vanadium steel to ensure longevity
- Optional protective nylon pouch with belt loop is available



MODEL	PART #	CUT LENGTH	LENGTH	WEIGHT
KS-1 Shears Only	80671	0.95"	5.5"	2.8 oz
KS-1 Shears & Nylon Pouch	80665	(24.13 mm)	(140 mm)	(79 g)
KS-1 Nylon Pouch Only	80669	N/A	N/A	N/A

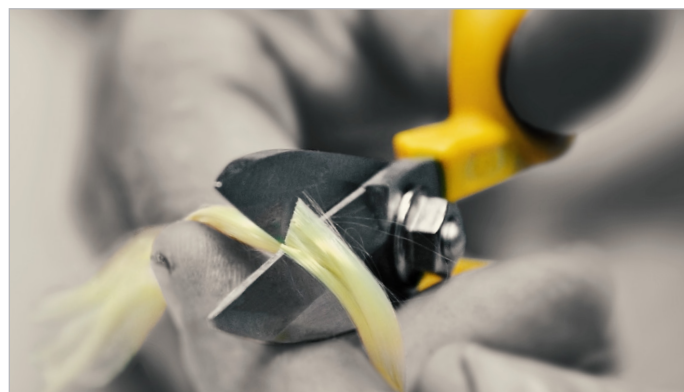


## KC699 Series

Fiber Optic Kevlar® Shears

- Precision shears designed for cutting through Kevlar® strength fibers
- Hardened, stainless steel blades easily grip fibers & prevent slippage with a fine-serrated edge
- Oversized & ergonomic molded handles provide comfort during use

MODEL	PART #	CUT LENGTH	LENGTH	WEIGHT
KC699	46175	1.1" (27.9 mm)	7.25" (184 mm)	1.6 oz (45 g)



## 86 1/2SF Series

Electronic Kevlar® Cutters

- High-leverage tool ideal with a serrated blade for cutting, trimming & slicing through tough fibers & other industrial or electronics materials
- Hot-forged, high-carbon steel blades ensure durability & longevity
- Equipped with quick-action spring response design & yellow cushioned grips for ease of use



MODEL	PART #	CUT LENGTH	LENGTH	WEIGHT
86 1/2SF	46331	0.75" (19.05 mm)	6.5" (165 mm)	4.8 oz (136 g)

## FOKC Series

Fiber Optic Kevlar® Cutters

- Durable, compact & lightweight cutters engineered to cut through Kevlar® strength fibers
- Return-spring mechanism & fully serrated, high-carbon steel blades provide precision cuts
- Ergonomic handles feature cushioned, non-slip grips to ensure comfort



MODEL	PART #	CUT LENGTH	LENGTH	WEIGHT
FOKC	36495	0.7" (17.8 mm)	5.75" (146 mm)	2.5 oz (72 g)

For more information or to locate the nearest authorized Ripley® distributor, please visit [www.ripley-tools.eu](http://www.ripley-tools.eu) or call +44 (0) 1384-400070 to speak to a customer service representative.



RIPLEY EUROPE LIMITED • BUILDING #47, SECOND AVENUE  
THE PENSNETT ESTATE • KINGSWINFORM, WEST MIDLANDS DY6 7UZ, ENGLAND  
P: +44 (0) 1384-400070 F: +44 (0) 1384-400060 W: [WWW.RIPLEY-TOOLS.EU](http://WWW.RIPLEY-TOOLS.EU)