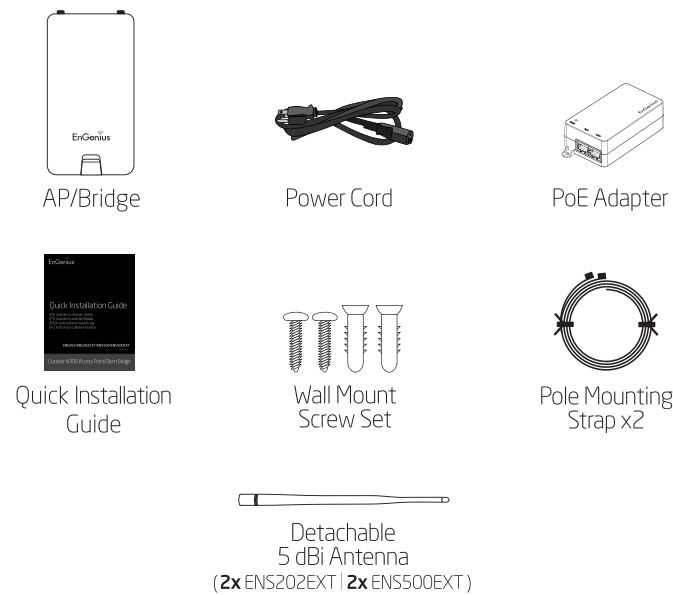


# Quick Installation Guide

## Package Contents



**Note:** Detachable antenna should ONLY be applied on ENS202EXT/ENS500EXT.

## Minimum Requirements

- + Broadband Internet Service (Cable or DSL Modem)
- + Internet Browser (Internet Explorer, Safari, Firefox, Chrome)

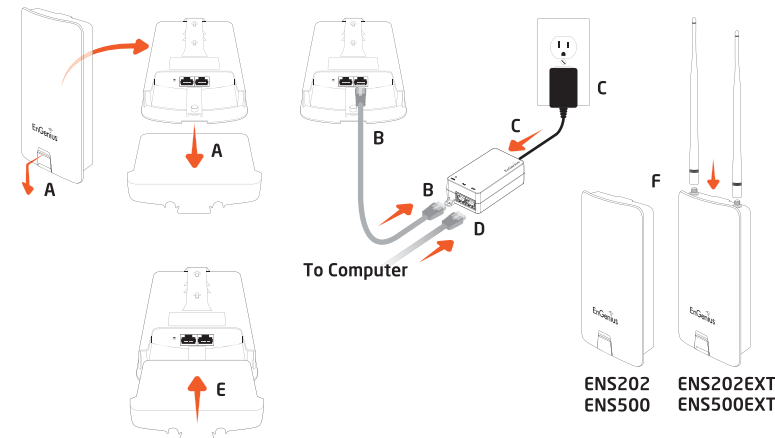
ENS202/ENS202EXT/ENS500/ENS500EXT  
Version 1.1

Outdoor N300 Access Point/Client Bridge

## 1 Connecting the AP/Bridge

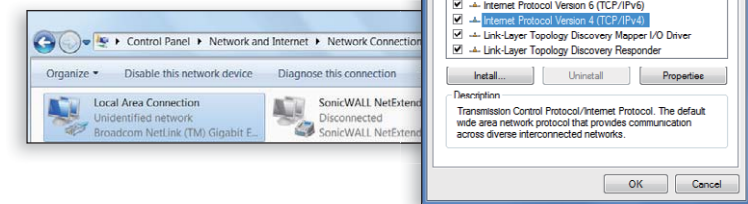
- Remove the rear bottom panel.
- Connect one end of the Ethernet cable into the LAN(PoE) port of the AP/Bridge and the other end to the PoE Port on the PoE Adapter.
- Connect the Power cord with the PoE Adapter and plug the other end into an electrical outlet.
- Connect the second Ethernet cable into the LAN port of the PoE Adapter and the other end to the Ethernet Port on the computer.
- Place the panel removed from step A back into the device.
- Screw on the provided antennas to the top of devices. (ONLY apply on ENS202EXT/ENS500EXT)

**Note:** The AP/Bridge should ONLY be powered via Ethernet cable connected to the included PoE Adapter.



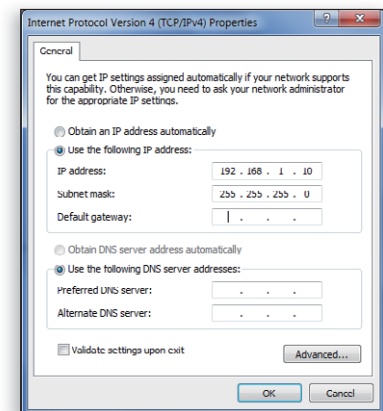
## 2 IP Address Configuration

- Once your computer is on, ensure that your TCP/IP is set to **On** or **Enabled**. Open **Network Connections** and then click **Local Area Connection**. Select **Internet Protocol Version 4 (TCP/IPv4)**.



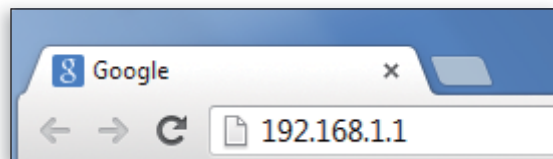
- If your Computer is already on a network, ensure that you have set it to a **Static IP Address** on the interface.

(Example: 192.168.1.10 and the Subnet Mask address as 255.255.255.0.)

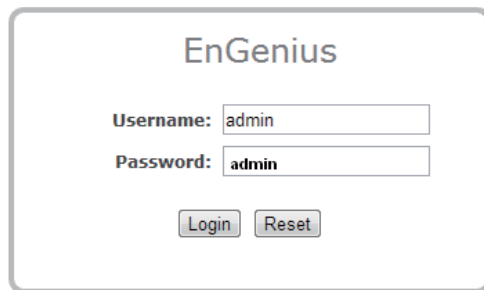


## 3 AP/Bridge Setup

- To configure the AP/Bridge, open a web browser. In the address bar of the web browser, enter **192.168.1.1** and hit enter.

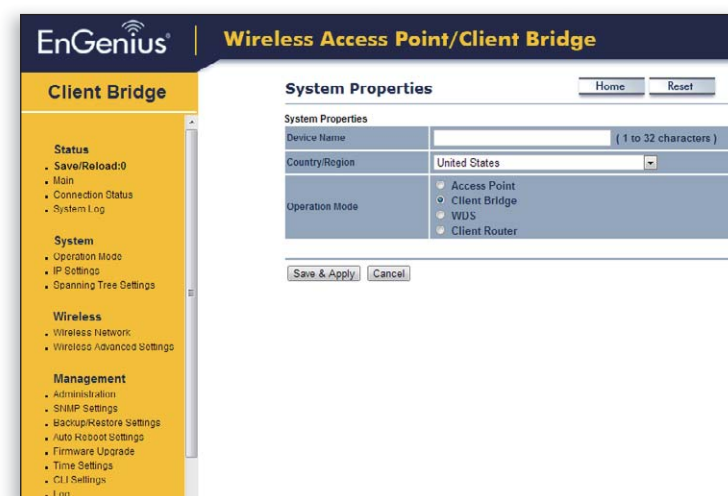


- A login screen will appear. By default, the username of the AP/Bridge is **admin** and the password is **admin**. Enter the current username and password of the AP/Bridge and then click **Login**.



## 4 Switching Modes

- This device can operate in the following modes: Access Point, Client Bridge, WDS AP, WDS Bridge, WDS Station and Client Router.
- Click on the **Operation Mode** link under the **System Properties**.



## Technical Support

Country of Purchase	Service Center	Service Information
<b>North America</b> <a href="http://www.engeniuscanada.com">www.engeniuscanada.com</a>	Canada	<a href="mailto:rma@engeniuscanada.com">rma@engeniuscanada.com</a> Toll Free: (+1) 888 397 2788 Local: (+1) 905 940 8181
	Los Angeles, USA	<a href="mailto:support@engeniustech.com">support@engeniustech.com</a> Toll Free: (+1) 888 735 7888 Local: (+1) 714 432 8668
<b>Central &amp; South America</b> <a href="http://es.engeniustech.com">es.engeniustech.com</a> <a href="http://pg.engeniustech.com">pg.engeniustech.com</a>	Miami, USA	<a href="mailto:miamisupport@engeniustech.com">miamisupport@engeniustech.com</a> Miami: (+1) 305 887 7378 Sao Paulo, Brazil: (+55) 11 3957 0303 D.F. Mexico: (+52) 55 1163 8894
	Netherlands	<a href="mailto:support@engeniustech.com">support@engeniustech.com</a> (+31) 40 8200 887
<b>Europe</b> <a href="http://www.engeniusnetworks.eu">www.engeniusnetworks.eu</a>	Dubai, UAE	<a href="mailto:support@engenius-me.com">support@engenius-me.com</a> Toll Free: U.A.E.: 800-EnGenius 800-364-364-87 General: (+971) 4 357 5599
	Singapore	<a href="http://www.engeniustech.com.sg/e_warranty_form">www.engeniustech.com.sg/e_warranty_form</a> <a href="mailto:techsupport@engeniustech.com.sg">techsupport@engeniustech.com.sg</a> Toll Free: Singapore: 1800 364 3648
<b>Asia</b> <b>Oceania</b> <a href="http://www.engeniustech.com.sg">www.engeniustech.com.sg</a>	Taiwan, R.O.C.	<a href="mailto:technology@senao.com">technology@senao.com</a>
<b>Others</b> <a href="http://www.engeniusnetworks.com">www.engeniusnetworks.com</a>		

## Notes

Maximum data rates are based on IEEE 802.11 standards. Actual throughput and range may vary depending on many factors including environmental conditions, distance between devices, radio interference in the operating environment, and mix of devices in the network. Features and specifications subject to change without notice. Trademarks and registered trademarks are the property of their respective owners. For United States of America: Copyright © 2015 EnGenius Technologies, Inc. All rights reserved.