

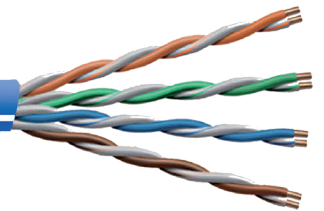


Go the distance

At more than 2.5x the distance of Cat6,
it's a GameChanger.

NOW IN STOCK AT





When the standard solution isn't enough

1Gb/s and PoE+ over 200 metres - That's a GameChanger

Frequently Asked Questions

WHAT'S THE MAXIMUM DISTANCE I CAN USE THE GAMECHANGER CABLE?

That depends on the power and bandwidth requirements of your application. At a minimum you can expect 1Gbps at 200 metres and you can expect 10 Mb/s at 259 metres. You can also expect to deliver 802.3at Type 2 "PoE+" up to 259 metres.

DOES THE GAMECHANGER WORK FOR ALL APPLICATIONS?

Yes, the GameChanger Cable is agnostic to the type of Ethernet traffic you are running. We have seen customers using GameChanger to solve long distance cabling issues for access points, surveillance cameras, VoIP phones, point of sale devices, access control, digital signage, PoE lighting and much more.

WHAT'S THE DIFFERENCE BETWEEN THE GAMECHANGER AND A STANDARD CAT6?

The Gamechanger has been designed with an increased gauge size, carefully designed twisting and specialty materials to be optimized for long distance Ethernet applications.

WHO IS HAVING SUCCESS WITH THE GAMECHANGER TODAY?

Several of the world's largest security integrators (6 out of the top 8) began deploying the GameChanger as early as 2016. Consultants and Engineers around the world have specified the Gamechanger as a critical part of their solutions for everything from airports to banks and parking structures to amusement parks.

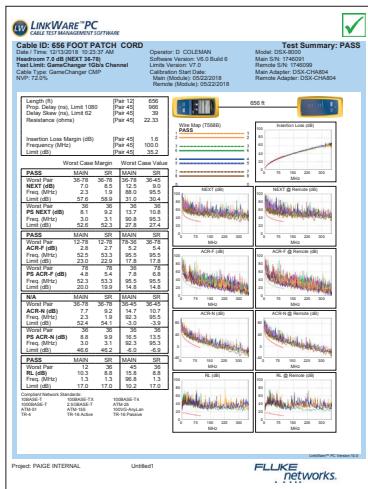
Field Certification

You can find GameChanger cable types and test limits in your favorite hand held testers from:

- AEM
- Fluke
- Ideal
- Netscout
- Softing
- Viavi



Want a closer look?
Scan this QR code.



An example of a passing result, on a 200m channel.

GameChanger Part Numbers:
 258500336 - C_{ca} - s1a, d0, a1, Blue
 258340804 - OSP Shielded, Black

Save Time	Save Money	Save Hassle
↓ Hardware	↓ Trades	↓ Points of Failure
↓ Terminations	↓ Extenders	↓ Risk
↓ Touch Points	↓ IDFs	↓ Labor

Cable Management Warehouse Ltd
 Unit 5 & 6, Arkwright Industrial Estate
 Arkwright Rd, Bedford, MK42 0LQ

Tel: +44 (0)1234 848030
 Email: sales@cmwltd.co.uk

NOW AVAILABLE AT



www.paigedatacom.com/gamechanger

