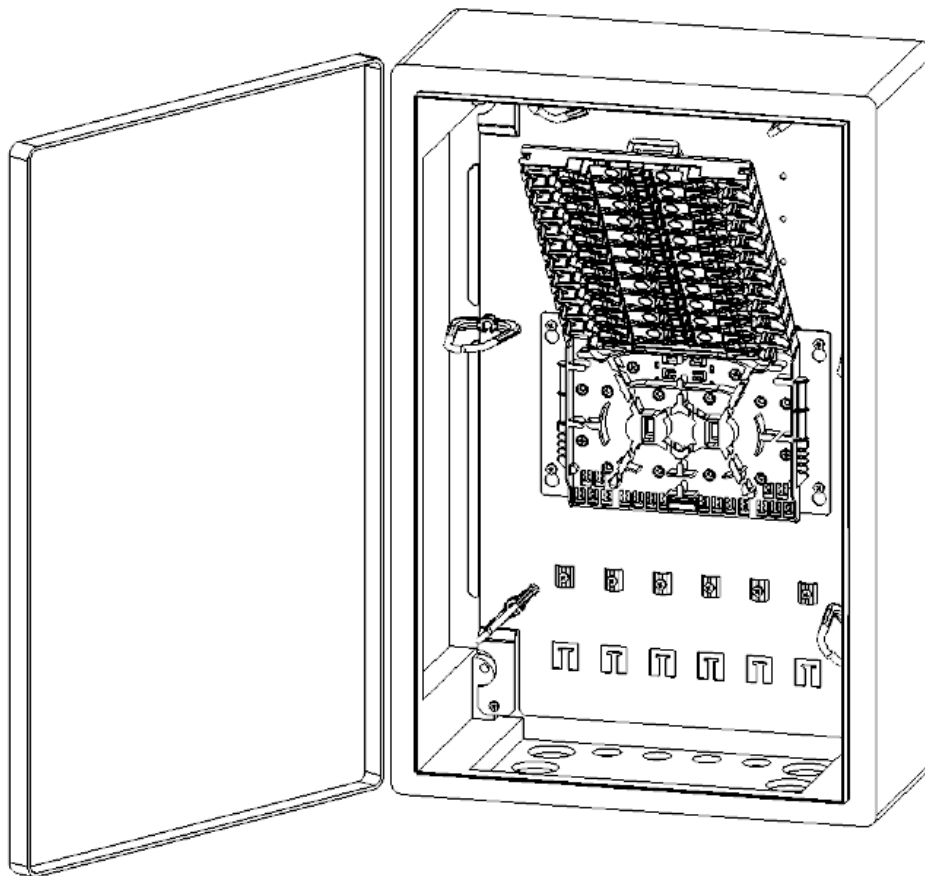




MDB FA 24/48, MDB FA 48/96, MDB FA 72/144



Contact:

MICOS TELCOM s.r.o.

Háj 365

798 12 Kralice na Hané, Czech Republic

tel.: +420 582 307 511

E-Mail: telcom@micos.cz; www.micostelcom.com

495852



GB

Technical description:

Optical distribution box MDB FA 24/48, 48/96, 72/144 is designed for the termination of 24/48/72 fibers to SC connectors or 48/96/144 fibers to LC connectors indoors and outdoors. The distribution box can be enhanced by the pole holder and it can store large cable/patchcords reserves

Type: MDB FA 24/48, MDB FA 48/96, MDB FA 72/144
Colour: pale grey RAL 7035

Accessories:

Accessory bag 1pc

Declaration on product conformance:

The product was manufactured complying with the valid technical documentation. In the production process the predefined technological procedures have been abided by. And the predefined material has been used in accordance with the norm ISO 9001.

Warranty:

The manufacturer warranty applies to product imperfections arisen within the period of warranty due to the provably deficient material, error in design, or deficiencies in manufacture. Such deficiencies shall be remedied by the manufacturer free of charge. The manufacturer is authorized to reject the complaint if the item was provably damaged due to an unwarranted interference, rough manipulation, vandalism, or by force majeure. The warranty period is 24 months (if not stated other way) starting from the date of product shipment to the customer. The warranty applies to the product capability and compliance with the agreed or usual purpose.

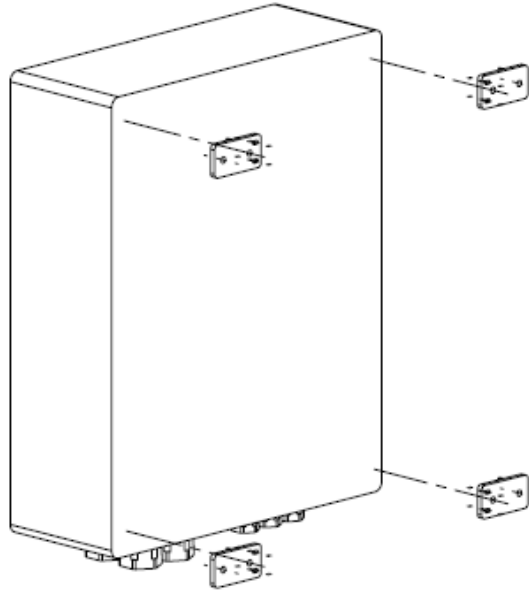
Note:

The product design may vary in the material used, surface finishing, accessories included etc. according to the requirement of the customer. The weight of single product designs may vary. Manufacturer is exclusively authorized to improve and develop its products according to the requirements of the customer. Recording of all developing changes in this document may not be taken. The picture is only informative.

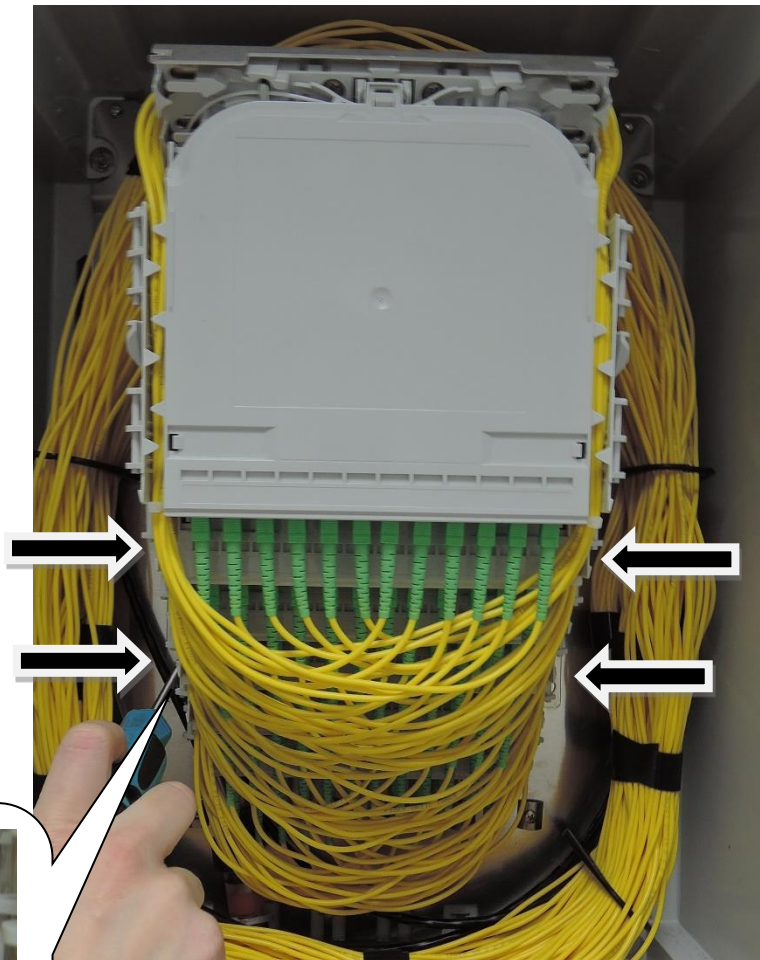


Assembly procedure:

1. Mount the holders to the rear side of the distribution box. Fix the distribution in the place using 4 screws.

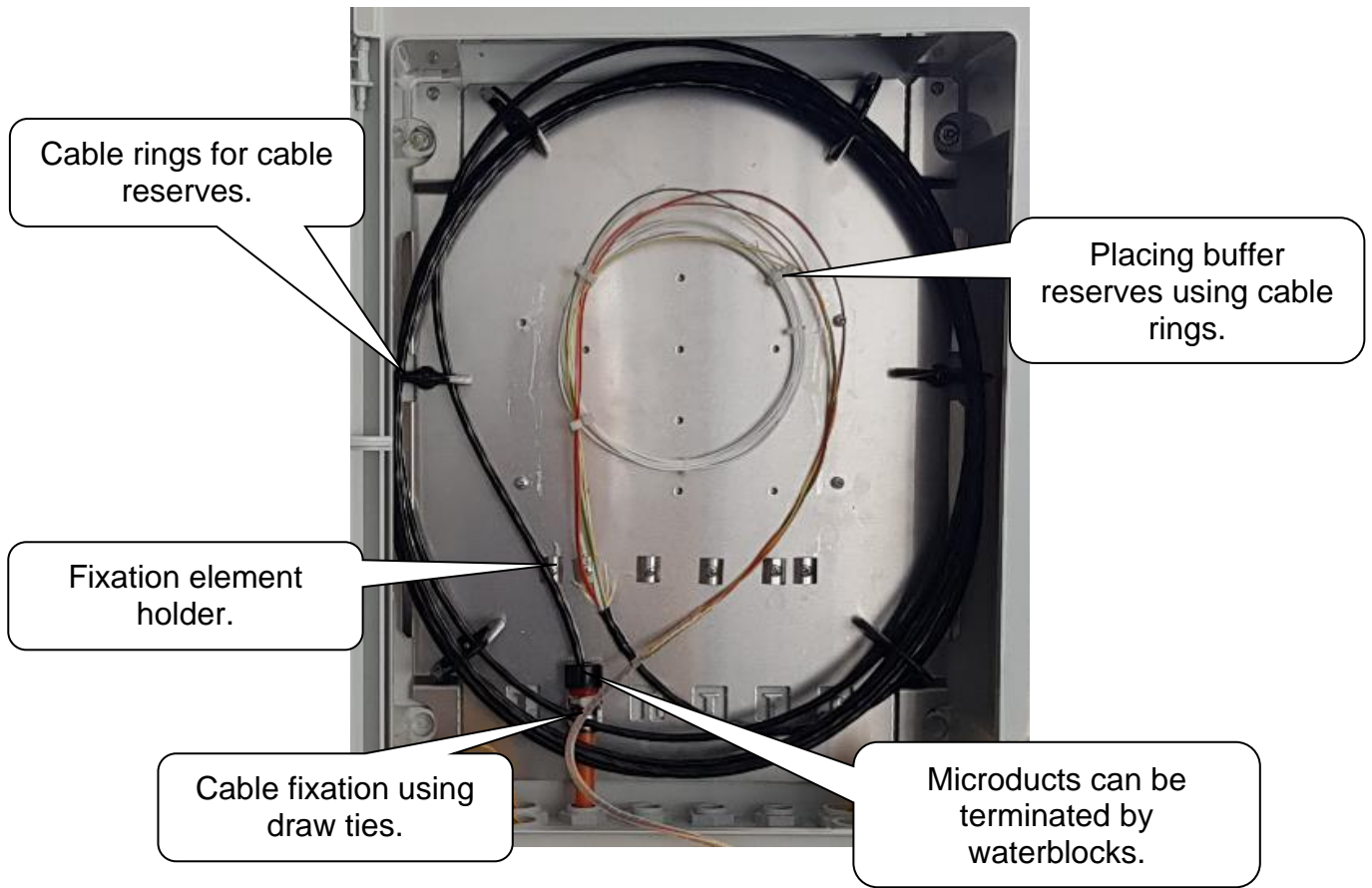


2. Unscrew 4 screws and take out the inner module.





3. Placement of the elements in the distribution box.



4. The tray holder can be removed and put on the assembly desk.



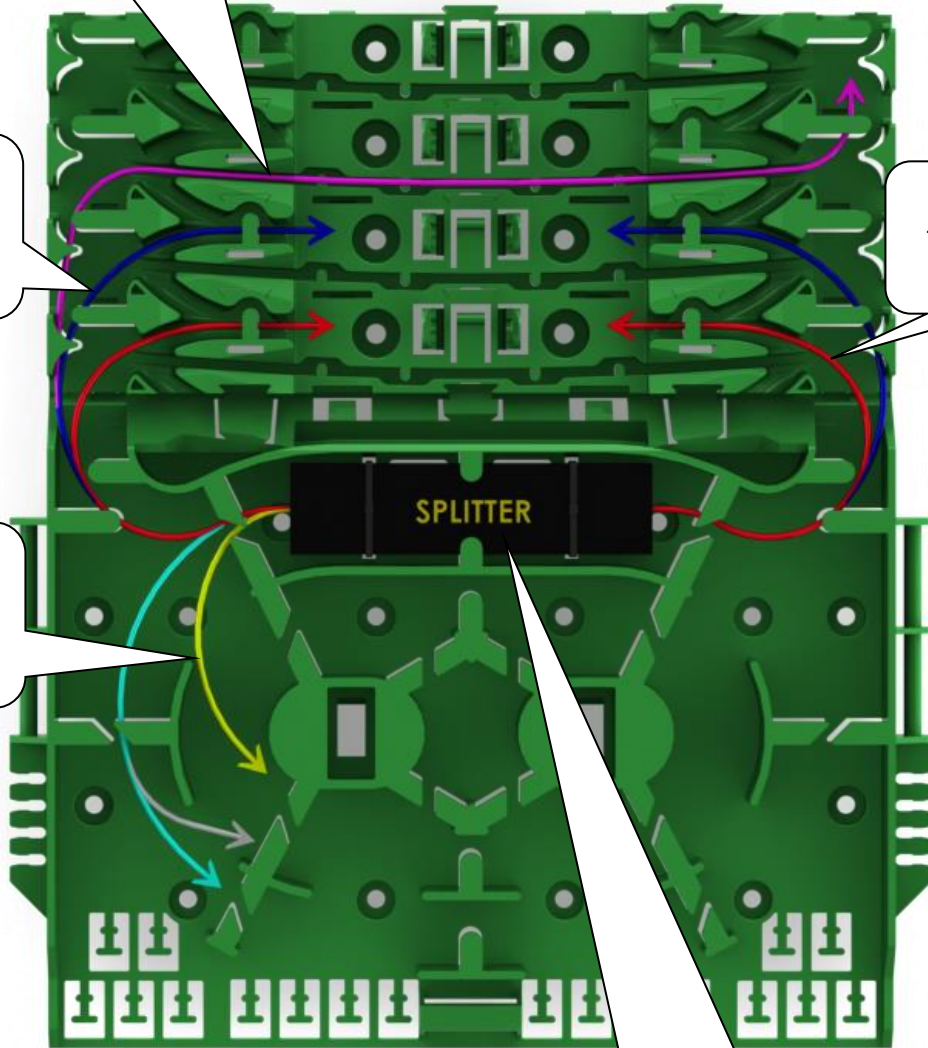
5. Placing and routing of the splitter in fiberoad system. The system is compatible to fibers in secondary protection (0,9mm).

Possibility of routing the fibers to their side wherever in the management.

Routing to the second tray
 $R = 25\text{mm}$.

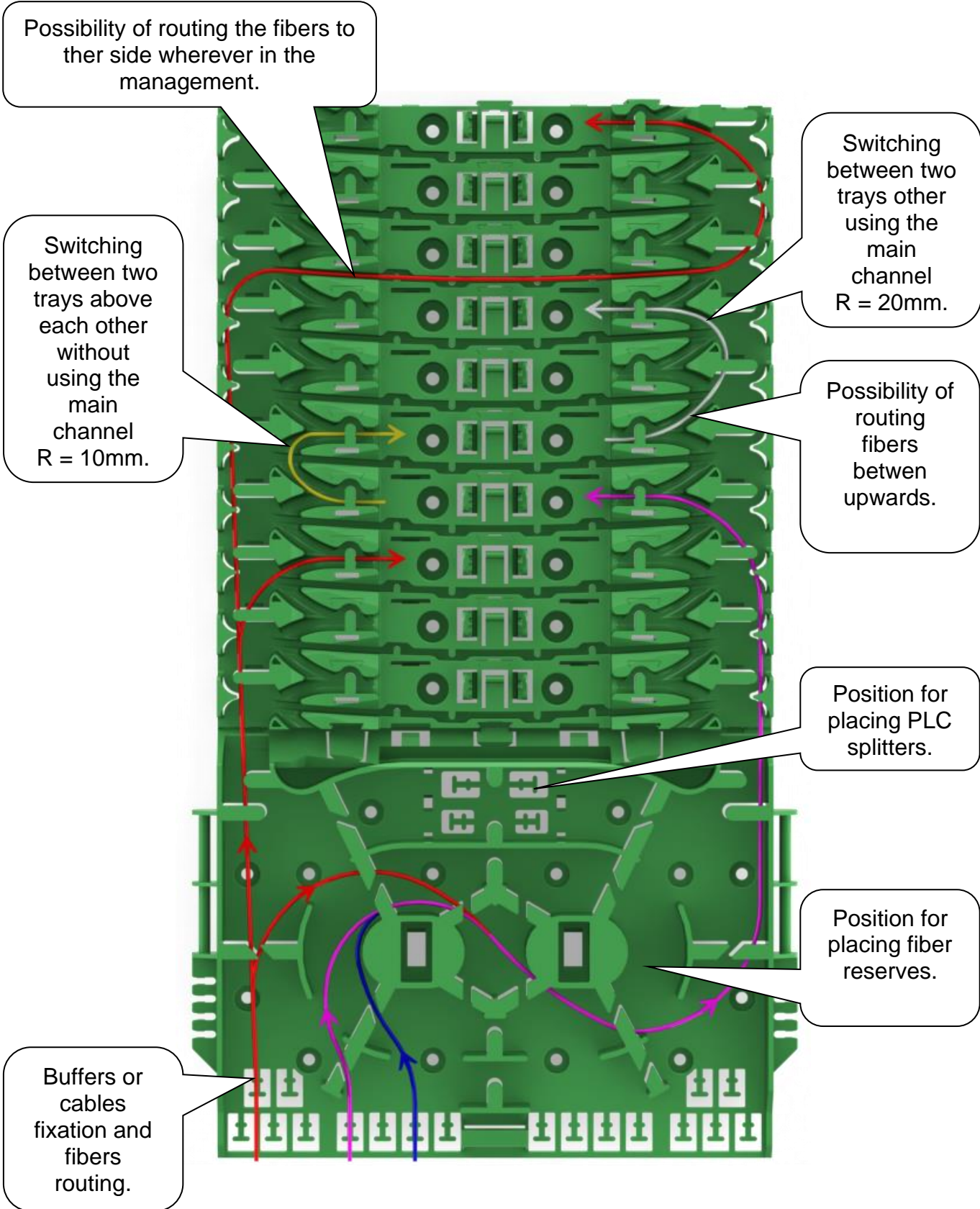
Routing to the first tray
 $R = 15\text{mm}$.

Routing through management
 $R > 30\text{mm}$.



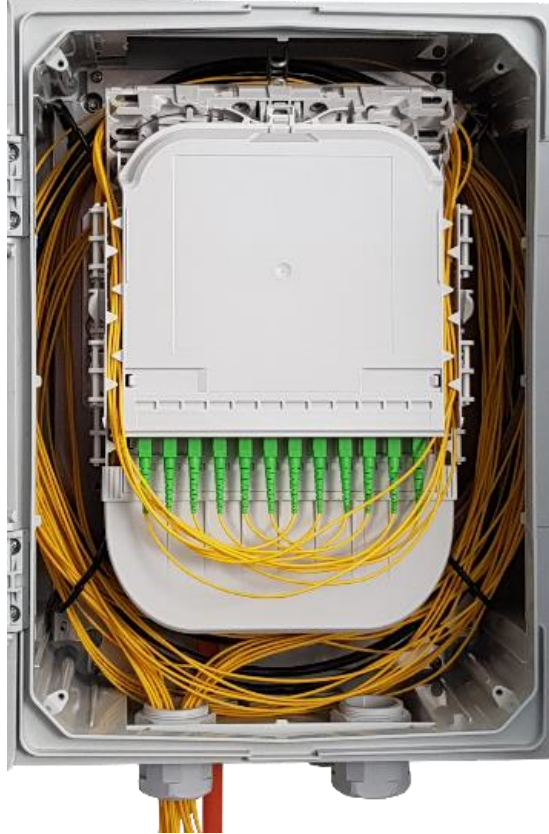
Splitter in case max.
80x20x8mm, fixation using
drawing ties.

6. Placing and routing of the splitter in fiberoad system. The system is compatible to fibers in secondary protection (0,9mm).





7. Examples of configuring.



8. The operations specified in Paragraphs 1-7 may only be performed by an authorized technician.

