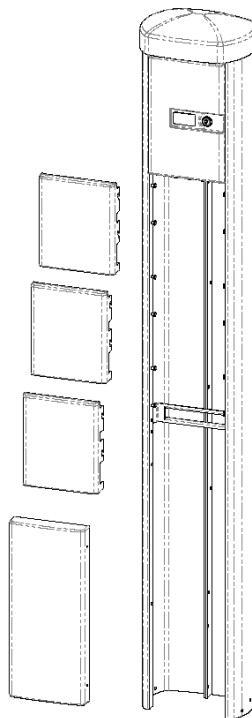




SNM 48 SIS



Contact:

MICOS TELCOM s.r.o.

Háj 365

798 12 Kralice na Hané, Czech Republic

tel.: +420 582 307 511

E-Mail: telcom@micos.cz; www.micostelcom.com

492010



GB

Technical description:

The SNM 48 SIS optical distribution box is designed for the placement of 48 splice outdoors. The distribution box is to be installed in an open area into a ditch. The plastic body of the pillar is fitted with one SNM 48 SIS distribution box.

Type: SNM 48 SIS
Inputs: 4x PG 13,5
Colour: pale grey RAL 7035
Dimensions: 1817x290x209mm
Weight: c. 11kg

Accessories:

Accessory bag 1pc

Declaration on product conformance:

The product was manufactured in compliance with valid technical documentation. An observation of designed technology procedures and material was followed according to the ISO 9001 standard.

Warranty:

The manufacturer guarantees for product imperfections arised within period of warranty due to the demonstrably deficient material, error in design, or deficiencies in manufacture. Such a deficiencies shall be repaired by the manufacturer free of charge. The manufacturer is authorized to reject the complaint if the item was demonstrably damaged due to an unqualified infringement, rough manipulation, or by force majeure. The warranty period is 24 months (if not stated other way) starting from the date of product consignment to the customer. The warranty covers the product capability and conformance with agreed, or usual purpose.

Note:

The product design may vary according to the requirement of the customer. The weight of single product execution may vary. Manufacturer is authorised to develop its products according to the requirements of the customer. Recording of all developing changes in this document is not necessary. Picture is only informative.





Assembly procedure:

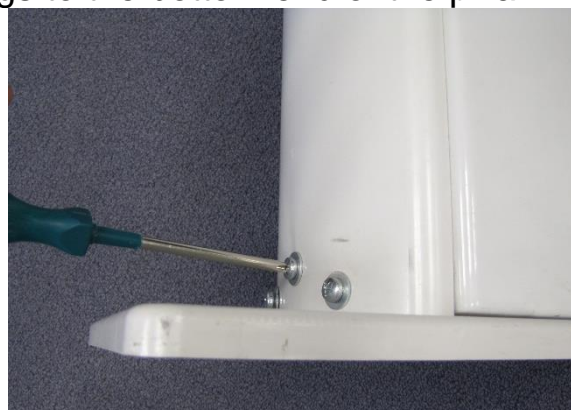
1. Unlock the lock, slide the lid to the right and remove it.



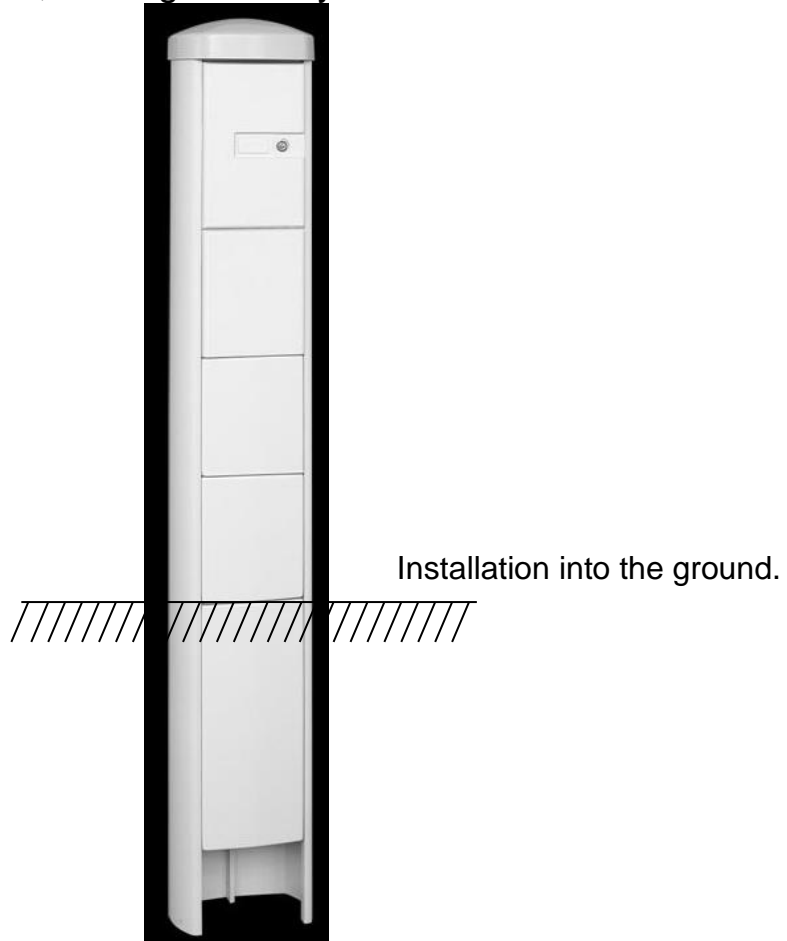
2. Remove the sliding covers located in the small pillar under the distribution box door.



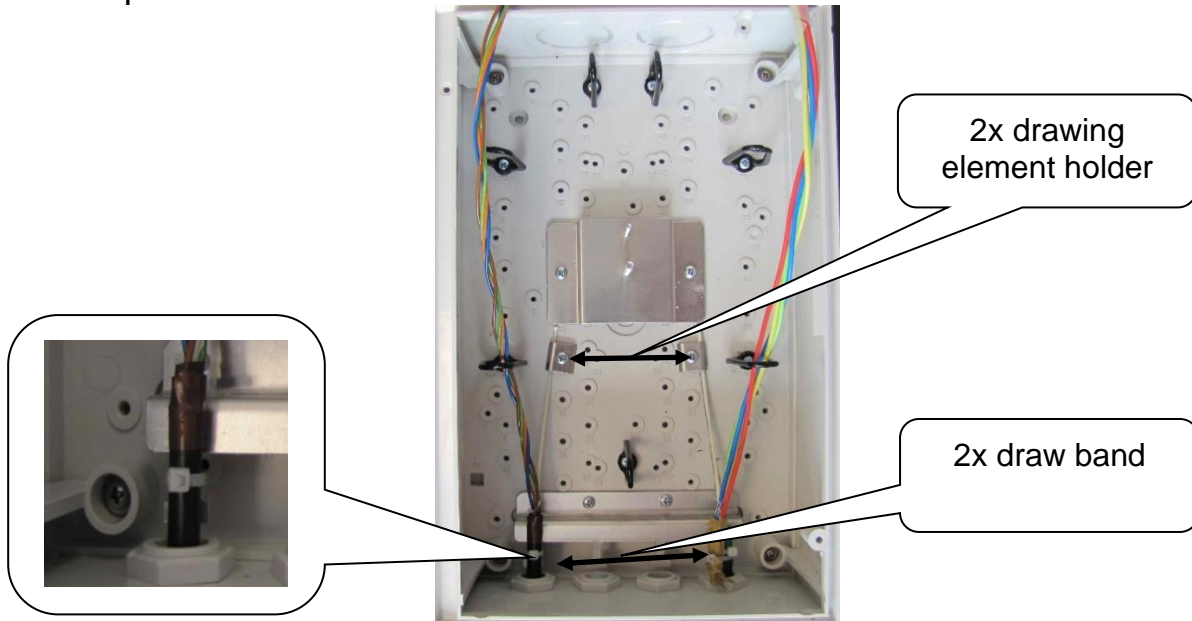
3. Attach plastic plugs to the bottom end of the pillar.



- Place the pillar in the ditch, so that the terrain is at the level of the upper edge of the lower solid cover; see Fig. – evenly consolidate earth around the pillar.

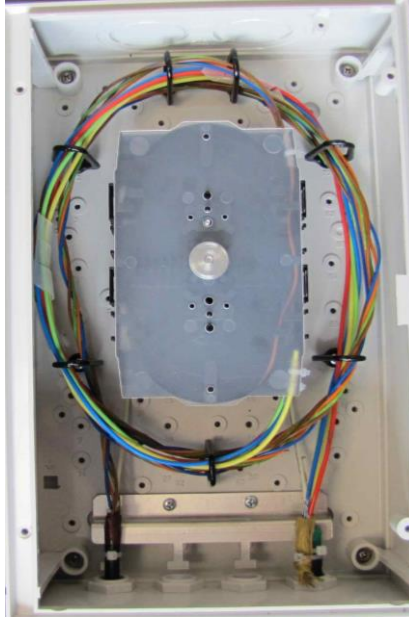


- Remove the end caps from the bushings. Lead the optical cables into the cabinet, fix them in the PG bushings, secure 2x draw band and attach the pulling components.





6. Splice the optical fibres. The maximum length of splice protection is 45 mm. Place the splices and optical fibre reserves into the cassette, replace the cassette lid and secure it with a nut. Keep the prescribed length reserves and observe the minimum bending radius of the optical cables.



7. Attach the sliding covers, close and lock the door of the distribution box.





-
-
-
-
-
-
-
8. The operations specified in Paragraphs 1 - 7 may only be performed by an authorized technician.