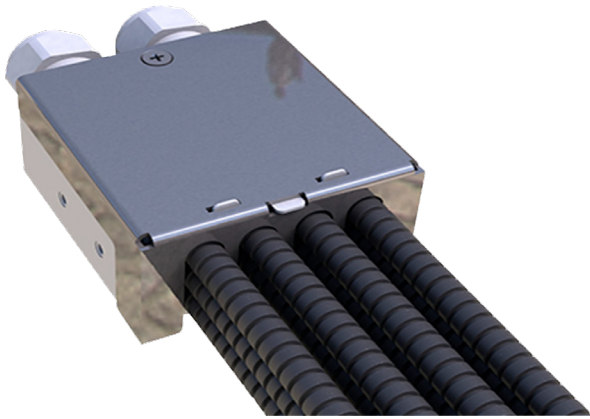


Fibre Manifold Up to 288 Fibre Cable Breakout Unit

Part Code: FA-MANIFOLD12



This Manifold has been designed to accommodate a high fibre count incoming cable and routing the cable elements with up to 12 separate 10mm flexible conduit outputs to feed multiple locations. These are supplied with 10mm flexible conduit with a 7mm I.D to allow easy installation of multi-subunit cable and an internal strength member tie point to secure the incoming cable.



- Made from 1.5mm Mild Steel
- Stainless Steel
- Cable Entry - Slotted
- Included with Mounting Bracket
- Flexible Conduit Included
- Included with Compression Glands for output tails
- Includes Input gland

Part Number	Description
FA-MANIFOLD12	Fibre Cable Breakout Unit with up to 12 conduit outputs - complete with 24metre of 10mm flexible conduit

Tel: +44 (0)1234 848030 Email: sales@cmwltd.co.uk Website: www.cmwltd.co.uk

Cable Management Warehouse Ltd, Units 5/6 Arkwright Road Industrial Estate, Bedford, MK42 0LQ



Fibre Manifold Up to 288 Fibre Cable Breakout Unit

Part Code: FA-MANIFOLD12



Product Drawings

