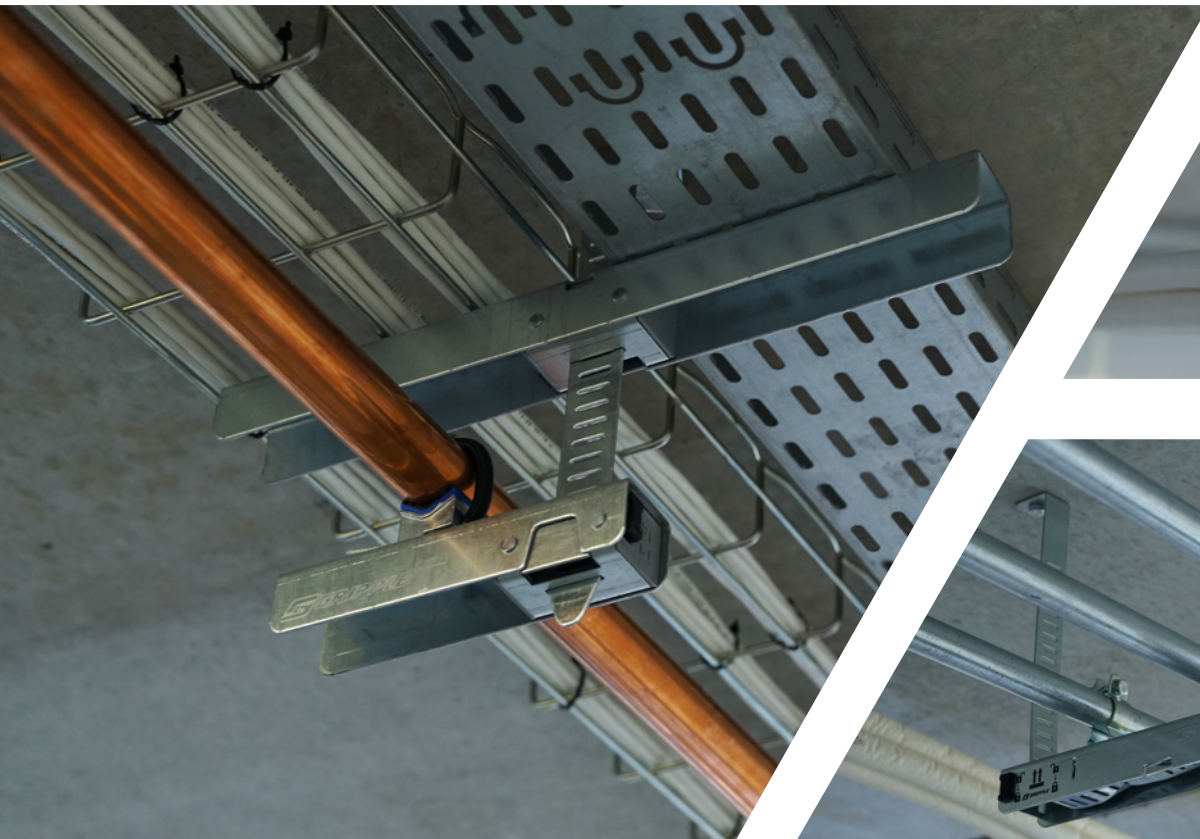




Fast Trak™ Range

For the installation of electrical containment, pipework, ductwork and other mechanical services in restricted places.



- Versatile
- Quick installation
- Safe & secure

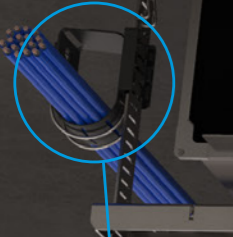
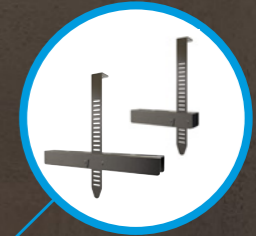
Fast Trak - Low Profile
Page 5



QT Universal Clamp &
QT Compact Clamp
Page 9

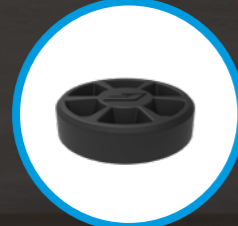


Fast Trak - Side Loading
Page 6



J-Hook
Page 7

Vibration Dampener
Page 8



Bracket Cover
Page 9

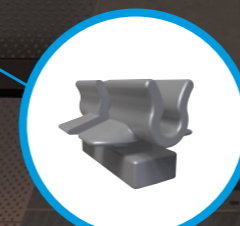


Fast Trak - Standard
Page 4



Conduit Clamp
Page 7

CB Clip
Page 8



Trunking Clamp
Page 7



CT Clip
Page 8



Gripple Fast Trak™ is a quick bracket suspension solution for mechanical and electrical services. Removing labour intensive on-site activity associated with traditional suspension systems, Fast Trak is a pre-fabricated, off-site solution which vastly simplifies the installation of cable containment, pipework and ductwork in building services applications. The next instalment in Gripple innovation, Fast Trak delivers significant cost and labour savings, carbon efficiencies and minimises health and safety concerns.

Products shown are for internal use only. Images shown for illustrative purposes only. Please refer to product installation instructions for full information.

Fast Trak™ - Standard

Pre-fabricated, trapeze bracket solution offering speed, flexibility and efficient use of space, for the installation of electrical containment, pipework, ductwork and other mechanical services in restricted places.

Quick – up to six times faster to install than traditional suspension systems

Safe – pre-fabricated system which removes the need to cut threaded rod or channel on-site

Tool free – bracket can be moved up and down the tracks to accommodate changes in position during installation

Secure – safety locks ensure security once brackets and tracks are in place

Zero waste – tracks bend neatly under bracket

Aesthetic – tracks can be concealed using Fast Trak Bracket Cover for a discreet finish

Space saver – can be multi-tiered to accommodate additional services

Easy measurement – indicators at each end of the bracket can be used as a measurement guide when marking fixing points in the soffit

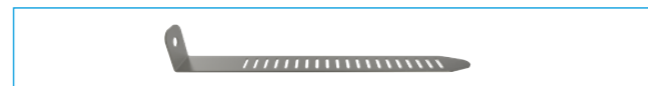
Neat & tidy – system can be 'stacked' to reduce storage on-site

Fire rated – for more information please contact Gripple Technical Services



Available Bracket Sizes

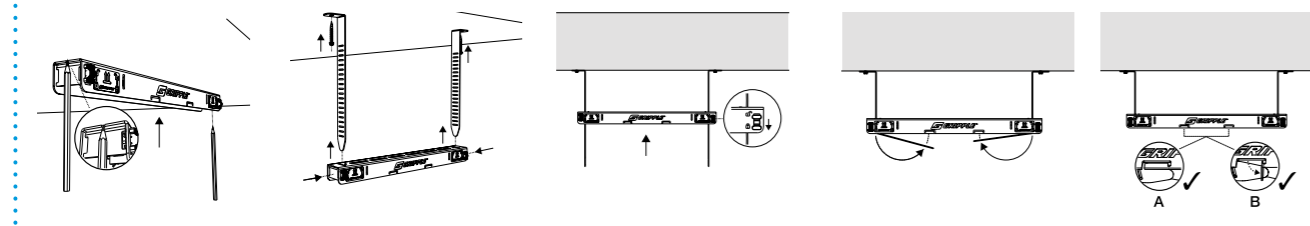
Available Track Sizes



FTB-250 – 180 kg 3:1 SWL
FTB-350 – 180 kg 3:1 SWL
FTB-450 – 180 kg 3:1 SWL
FTB-600 – 180 kg 3:1 SWL
FTB-750 – 180 kg 3:1 SWL
FTB-900 – 180 kg 3:1 SWL
FTB-1050 – 90 kg 3:1 SWL
FTB-1200 – 90 kg 3:1 SWL
FTB-1500 – 90 kg 3:1 SWL

FTT-135 – 90 kg 5:1 SWL
FTT-285 – 90 kg 5:1 SWL
FTT-535 – 90 kg 5:1 SWL
FTT-785 – 90 kg 5:1 SWL

Installation Steps



Do not adjust under load. Contact Gripple for full product information, submittal data and technical support.

Fast Trak™ - Low Profile

A low profile alternative to the standard Fast Trak solution offering greater space efficiency than the standard Fast Trak bracket range. Ideal for use with electrical containment, pipework and mechanical services in ultra-restricted ceiling spaces.

Space saver – 21 mm bracket depth is even lower profile than standard Fast Trak range

Quick – up to six times faster to install than traditional suspension systems

Safe – pre-fabricated system which removes the need to cut threaded rod or channel on site

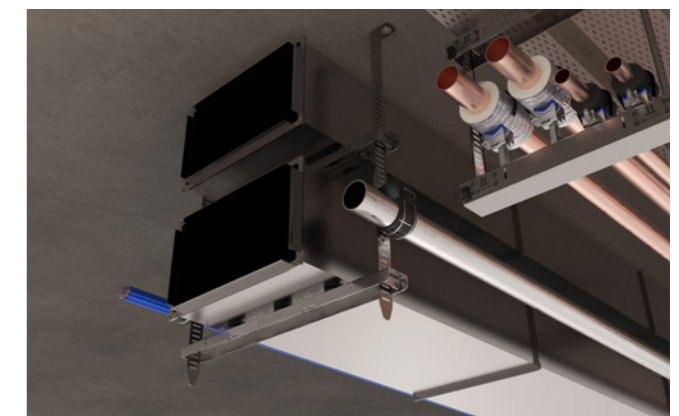
Tool free – brackets can be moved up and down the tracks to accommodate changes in position during installation

Easy measurement – indicators at each end of the bracket can be used as a measurement guide when marking fix points in the ceiling

Neat & tidy – system can be 'stacked' on-site to reduce storage

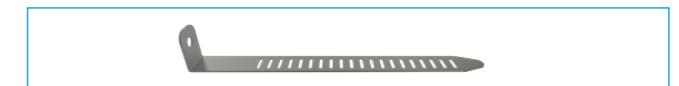
Aesthetic – tracks bend neatly under bracket or can be concealed using Fast Trak Bracket Cover

Fire rated – for more information please contact Gripple Technical Services



Available Bracket Sizes

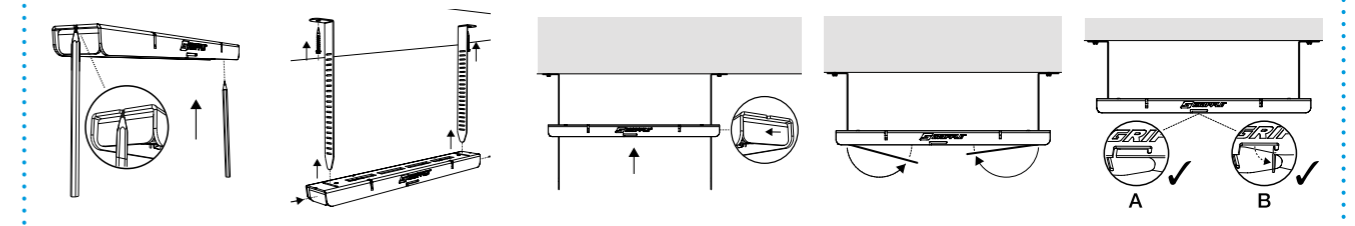
Available Track Sizes



FTBL-250 – 90 kg @ 3:1
FTBL-350 – 90 kg @ 3:1
FTBL-450 – 90 kg @ 3:1
FTBL-600 – 50 kg @ 3:1
FTBL-750 – 40 kg @ 3:1
FTBL-900 – 30 kg @ 3:1
FTBL-1050 – 20 kg @ 3:1
FTBL-1200 – 15 kg @ 3:1

FTT-135 – 90 kg 5:1 SWL
FTT-285 – 90 kg 5:1 SWL
FTT-535 – 90 kg 5:1 SWL
FTT-785 – 90 kg 5:1 SWL

Installation Steps

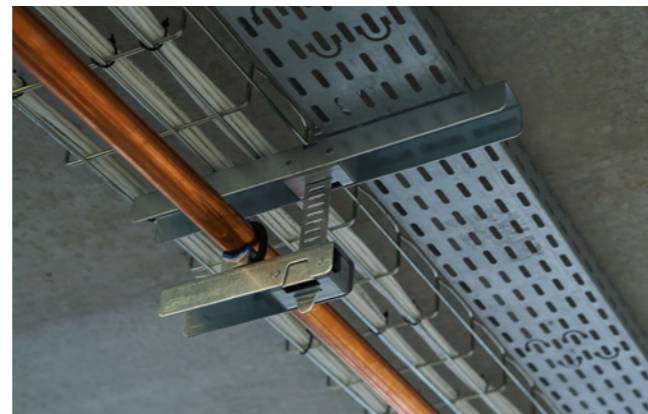


Do not adjust under load. Contact Gripple for full product information, submittal data and technical support.


Fast Trak™ - Side Loading

Pre-fabricated side loading bracket solution offering speed and flexibility for the installation of lightweight electrical containment, pipework and other mechanical services in restricted places.


- Quick** – up to four times faster to install than traditional suspension systems
- Safe** – pre-fabricated system which removes the need to cut threaded rod or channel on-site
- Tool free** – bracket can be moved up and down the tracks to accommodate changes in position during installation
- Secure** – safety locks ensure security once brackets and tracks are in place
- Space saver** – can be multi-tiered to accommodate additional services
- Easy installation** – lightweight services can be side loaded onto the bracket
- Neat & tidy** – system can be 'stacked' on-site to reduce storage
- Fire rated** – for more information please contact Gripple Technical Services



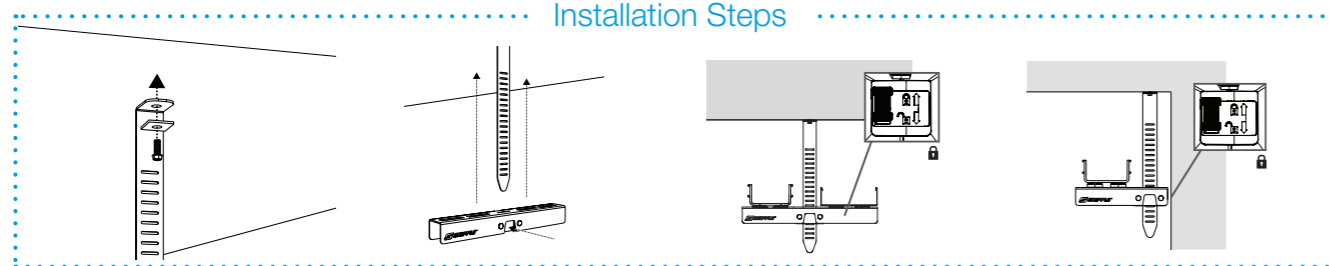
Available Bracket Sizes

	
Single Load FTBS-180 – 15 kg 3:1 SWL	Twin Load FTBT-200 – 30 kg 3:1 SWL FTBT-300 – 30 kg 3:1 SWL FTBT-400 – 30 kg 3:1 SWL

Available Track Sizes


FTT-135 – 90 kg 5:1 SWL FTT-285 – 90 kg 5:1 SWL

Installation Steps



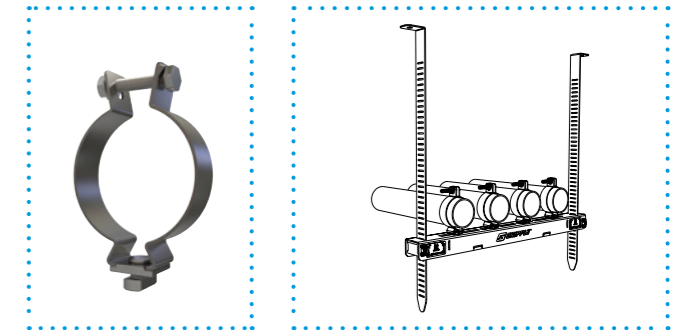
Internal applications only. Do not adjust under load. No dynamic loading.

Accessories

Conduit Clamp

Quarter turn attachment to Fast Trak brackets for quick installation of conduit.

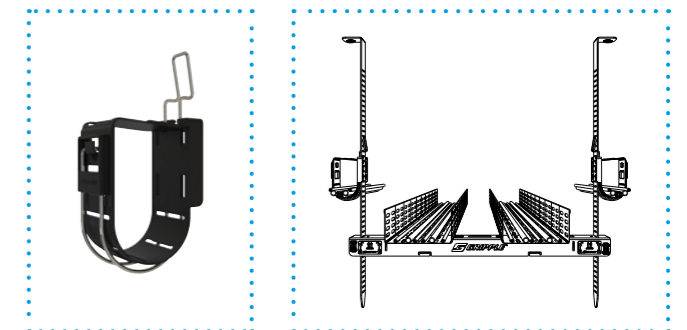
- Quick** – quarter turn attachment to Fast Trak brackets
- Simple** – no specialist tools required for installation
- Versatile** – available in sizes from 12.5 mm up to 100 mm
- Compatible** – supports rigid and EMT conduit
- Ready-to-use** – pre-assembled with nut & bolt



J Hook

For use in conjunction with Fast Trak tracks to support all types of data cables.

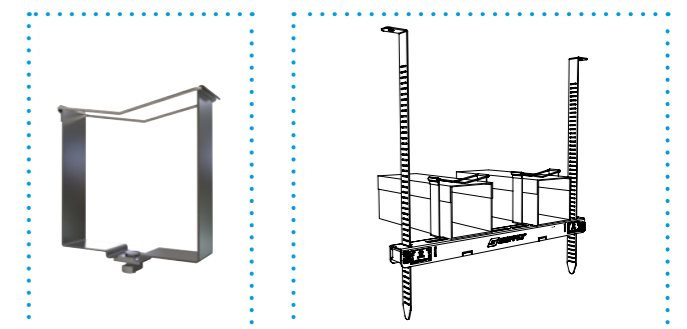
- Compatible** – supports all types of data cables
- Simple** – gate 'lock off' that can be re-opened to add additional cables
- Strong** – high performance, wide base wire form design
- Quick** – fast connection onto the Fast Trak track
- Versatile** – 50 mm diameter; can also be used for VRF/condensate pipes



Trunking Clamp

Quarter turn attachment to Fast Trak bracket for quick installation of trunking.

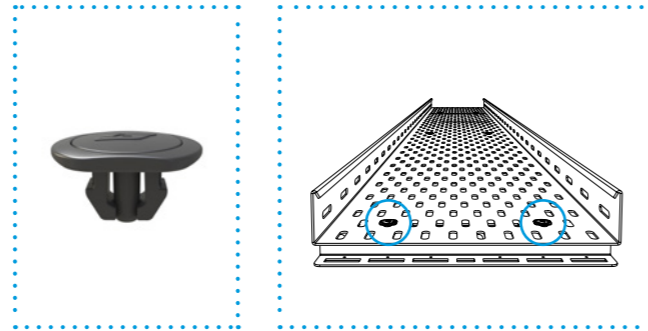
- Quick** – quarter turn attachment to Fast Trak brackets
- Simple** – no tools or additional fixings required for installation to bracket
- Versatile** – available in 4 sizes; 50 x 50 mm, 75 x 75 mm, 100 x 100 mm and 150 x 150 mm
- Secure** – integral, hinged latch retains trunking in position
- Compatible** – suitable for use with PVC and steel trunking



CT Clip

Developed for the quick fastening of cable tray to Gripple Fast Trak.

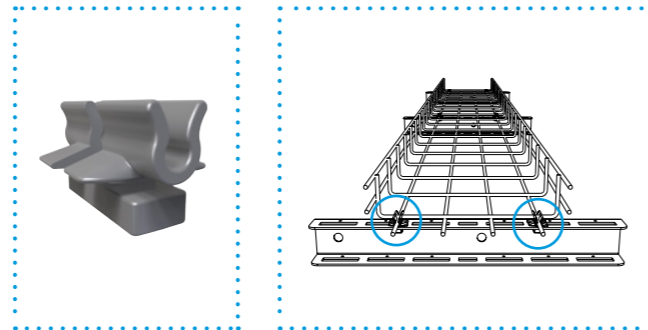
- Secure** – prevents uplift and slide of cable tray
- Versatile** – available in one size to fit 2 mm thick steel
- Easy** – tool-free, quarter turn installation
- Quick** – push fit fixing saves time on the install, when compared to traditional methods



CB Clip

Developed for the quick fastening of cable basket to Gripple Fast Trak.

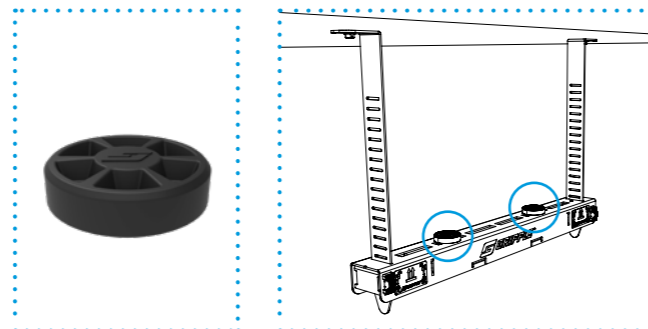
- Secure** – prevents uplift and slide of cable basket
- Versatile** – two sizes available to fit 4 mm and 5 mm cable basket wire
- Easy** – tool-free, quarter turn installation
- Quick** – save time on the install, when compared to traditional methods



Vibration Dampener

The Vibration Dampener Pad (VDP) is designed for vibration reduction when installing rectangular ducting on Fast Trak.

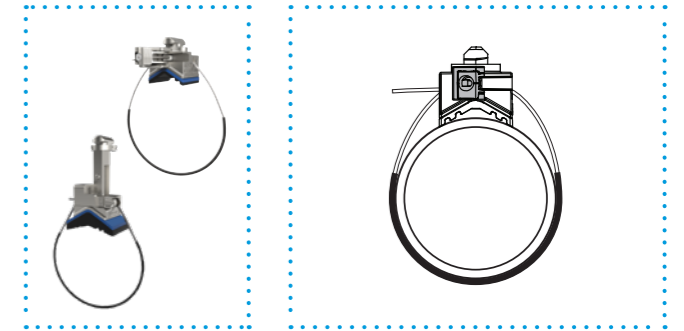
- Effective** – vibration reduction across a wide range of frequencies
- Secure** – prevents slipping of ductwork
- Easy** – made of rubber, no tools required
- Quick** – installs in seconds
- Versatile** – fits into multiple Fast Trak brackets preventing direct contact between the duct and the brackets



QT Universal Clamp & QT Compact Clamp

Used in conjunction with Fast Trak brackets for quick and easy support of all types of pipework within mechanical and plumbing services.

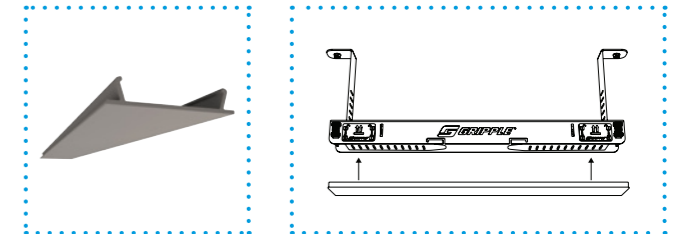
- Quick** – up to ten times faster than traditional methods due to integral mounting pillar and quarter turn attachment
- Simple** – no tools required for installation
- Universal** – replaces more than 13 different pipe rings from OD15 (15 mm copper) to OD114 (100 mm steel)
- Robust** – retractable sleeve, pre-fitted to wire rope to prevent galvanic corrosion
- Versatile** – a variety of rubber pads provide insulation against vibration (noise reduction > 23 db)



Bracket Cover

Neatly hides tracks to further enhance the aesthetics of the Fast Trak system.

- Aesthetic** – discreet finish; ideal for open soffit spaces
- Quick** – tool free and simple 'snap fit' installation
- Versatile** – can be cut down to specific lengths
- Safe** – covers metal edges that would usually protrude below the bracket



Mounting Methods



Concrete Screw

- Suitable for cracked and non-cracked concrete
- Removable



Shot Fire X-U P8

- High-performance single nail with steel washer for concrete and steel, for powder-actuated tools

Fast Trak Kit Codes

How to build your unique product code:

1 CHOOSE YOUR BRACKET

Standard		Low Profile		Side Loading - Single	Side Loading - Twin	
250 mm FTB-250	350 mm FTB-350	250 mm FTBL-250	350 mm FTBL-350	180 mm FTBS-180	200 mm FTBT-200	300 mm FTBT-300
450 mm FTB-450	600 mm FTB-600	450 mm FTBL-450	600 mm FTBL-600		400 mm FTBT-400	
750 mm FTB-750	900 mm FTB-900	750 mm FTBL-750	900 mm FTBL-900			
1050 mm FTB-1050	1200 mm FTB-1200	1050 mm FTBL-1050	1200 mm FTBL-1200			
1500 mm FTB-1500						

2 CHOOSE YOUR TRACK LENGTH

135 mm FTT-135	285 mm FTT-285	535 mm FTT-535*	785 mm FTT-785*
-------------------	-------------------	--------------------	--------------------

*Not to be used with Side Loading Fast Trak brackets.

OPTIONAL ACCESSORIES

 Conduit Clamp FTCC-1IN FTCC-1.25IN FTCC-1.5IN FTCC-2IN FTCC-2.5IN FTCC-3IN FTCC-3.5IN FTCC-4IN	 J-Hook FTJH-2IN	 Trunking Clamp FTCT-50 FTCT-75 FTCT-100 FTCT-150	 CT Clip CTC-2MM-GRY	 Vibration Dampener VDP-100	 CB Clip CBC-5MM-BLK CBC-4MM-GRY	 Bracket Cover FTBC-1100	 QT Compact Clamp GC2-C-400	 QT Clamp GC2-T-400
---	---	---	---	--	--	--	--	--

Key Recommendations

Failure to comply with these recommendations may result in product malfunction and possible damage to property or person, and will invalidate the Gripple guarantee. Gripple products are guaranteed to be free from defects in materials and workmanship, in accordance with our terms and conditions. No other warranty, whether express or implied, including any warranty of merchantability or fitness for purpose shall exist in connection with the sale or use of any Gripple product.

Full technical information and installation instructions should be obtained directly from Gripple Limited, Gripple Europe or Gripple Inc., any regional Gripple office, or via the website www.gripple.com.

Please adhere to the following key recommendations:



Loads

Always operate the product within its stated safe working load range.



Lifting

Do not use for lifting, either by crane or as part of a pulley system. Suspend static loads only.



Environment

Do not use in chlorinated atmospheres. Fast Trak is for use in dry and air conditioned environments only. Not suitable for swimming pools.



Do not use in chemically corrosive atmospheres.



Impact

If there is potential for impact on suspended services, seek advice from Gripple Ltd. Technical Services prior to installation.



Lubrication

Do not apply oil or any other lubricant to any part of the assembly.



Installation

Do not walk or stand on the Gripple product installation unless expressly designed for this purpose.



Painting

Do not paint the product prior to installation. Ensure that the product is in its final position prior to applying any paint to the wire rope assembly. Do not move the product after painting.

Quality & Approval

Gripple UK is ISO 9001:2015 and ISO 14001 certified. Gripple products meet the highest standards of quality with lowest environmental impact.



Gripple's policy is one of continuous development and innovation. We therefore reserve the right to alter specifications, etc. without notice.



www.gripple.com
info@gripple.com

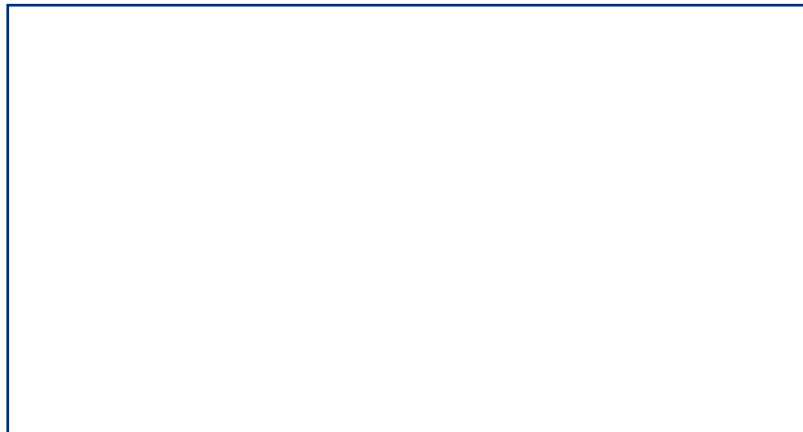
Gripple Ltd (Headquarters)

The Old West Gun Works
Savile Street East
Sheffield S4 7UQ
UK

T | +44 (0) 800 018 4264

F | +44 (0) 114 275 1155

E | info@gripple.com



Gripple Europe SARL

1, rue du Commerce
BP 37
67211 Obernai Cedex
France

T | +33 (0)3 88 95 44 95

F | +33 (0)3 88 95 08 78

E | frinfo@gripple.com

Gripple Inc

1611 Emily Lane
Aurora
IL 60502
USA

T | +1 866 474 7753

F | +1 800 654 0689

E | grippleinc@gripple.com

Gripple India

C-115, Industrial Area
Phase I, Naraina
New Delhi-110028
India

T | +91 11-40582703

F | +91 11-40582703

E | ininfo@gripple.com

Gripple Canada Inc

7015 Ordan Drive
Unit #15 Mississauga
Ontario L5T 1Y2
Canada

T | +1 905 458 8700

F | +1 800 654 0689

E | cainfo@gripple.com

Gripple Japan K.K

2-57 Tsukizi-cho
Hyogo-ku, Kobe-shi
Hyogo, 652-0845
Japan

T | +81 (0) 78 681 2121

F | +81 (0) 78 681 2122

E | japan@gripple.com

BUS-BROC-FAST-ENG-1971

Published April 2019

Please refer to www.gripple.com for the most up to date user advice and product information.



A GLIDE company



© 2019 Gripple.

Gripple is a registered trademark of Gripple Limited.
Company registered in England No. 1772901, VAT Reg No. GB 600 1951 88