

PVC-U PERIMETER TRUNKING SYSTEMS

PVC-U perimeter trunking is an ideal solution for the containment of data, communication and power cabling.

PVC-U PERIMETER TRUNKING SYSTEMS

Our PVC-U cable containment systems are easy to install, light to handle and cost-effective to use. We have a wide range of PVC-U trunking solutions in different heights, designs and cable capacities for the distribution of power and data; making it an excellent choice of material for the majority of commercial, education and healthcare environments. PVC-U is a self-extinguishing material and therefore helps to stop the spread of fire.

We are very proud that our PVC-U products have been manufactured using 80%* recycled material in the last year. This equates to 300 double decker buses of PVC-U that we have prevented going to landfill!

All we are changing is the environment, using recycled PVC-U reduces green house gases by 20 times compared to virgin PVC-U. Reassuringly we have been using recycled material for over 20 years, we take our impact on the environment seriously and are doing our best to minimise our effect.

(* Figures based on our production usages from 1/1/18 - 31/12/18)



Standard colour

The standard colour for each Marshall-Tufflex perimeter trunking range is shown within each relevant product information section, although solid white RAL 9003 is our most popular colour option.

The below table identifies the relevant RAL colour reference for our standard colour options, dependent on product range. We would be happy to quote for any other colour requirements, please see the Special Colours section below.

Standard Colours	
WH	CH
WH: White CH: Charcoal	

Material	Standard colour	Colour code suffix	RAL
PVC-U	Solid White Charcoal	WH CH	9003 7021

Please note: it is dependent on the product range as to which colour is available as standard.

Special colours and finishes



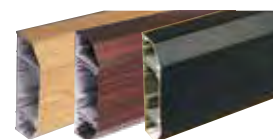
To help enhance the style of an installation, different variations of solid colour are sometimes required.

We can provide special colours in either a solid PVC-U solution or a painted solution dependent on your client's preference. All special colours requirements will need to be specified as a RAL colour.

Please note: due to different processes and materials utilised, it may not always be possible to obtain an exact colour match between the extruded and moulded product.

Woodgrain finishes

For a truly authentic look, we are able to quote for a range of different finishes. (Please note visible fittings would be supplied in a closely matched solid colour.)



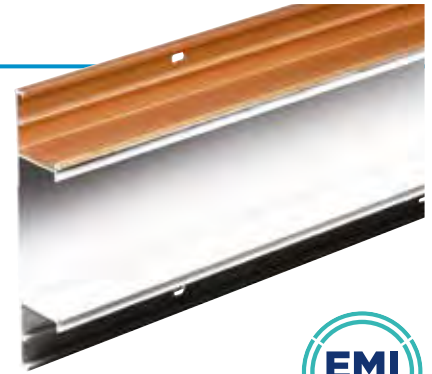
Please note: these colours and finishes are made to order and therefore are subject to set up charges, minimum order quantities and a longer lead time. For more information and a quotation contact our Technical Team on +44 (0)1424 856688.

Copper screening

A special conductive spray coating is applied to the relevant section of the trunking or fittings to assist in screening data cables against EMI interference with no reduction in cable capacity.

Marshall-Tufflex offer a standard range of copper screened products within selected PVC-U perimeter trunking systems which are shown within this catalogue and are held in stock.

If you have a requirement for products to be copper screened that are not part of our standard range, please contact our Technical Team on +44 (0)1424 856688. Please note that non standard products are made to order and therefore are subject to set up charges and a longer lead time.



Bio antimicrobial trunking



Where hygiene is a priority, Marshall-Tufflex has a solution with integral antimicrobial properties that can be incorporated within the PVC-U perimeter trunking and deliver ongoing antimicrobial protection that prevents 99.9% of harmful bacteria.

Because the Marshall-Tufflex Bio trunking solution is integral to the PVC-U material, there is no reduction in effectiveness of the trunking throughout its life – even if it is scratched or damaged.

We hold stock of key Odyssey and Sterling Curve trunking components with Bio antimicrobial protection due to its popularity.

The following trunking systems; Compact trunking, Mono Plus 20 trunking, Sterling Profile, Twin Plus trunking and XL trunking are also available in Bio but not available as standard.



Please note: non standard products are made to order and therefore are subject to set up charges and a longer lead time. For more information and a quotation contact our Technical Team on +44 (0)1424 856688.

Environmental & sustainability

- We use recycled PVC-U in our manufacturing process, reducing carbon emissions in doing so.
- Research has shown that the use of recycled PVC offers a 20-fold reduction in greenhouse gas (GHG) emissions compared to virgin product.
- 100% recyclable material and has a long life cycle. We encourage our products to be recycled at the end of their useful life.
- PVC-U is a cost-effective, sustainable choice and comparable with other materials such as steel, aluminium, copper and wood.
- Virgin grade PVC-U has the lowest oil content of a commodity plastic.
- No increase in dioxin emission from Municipal Waste Incineration. No phthalates used in manufacture of PVC-U or FR-ABS.
- Lead-free formulations are used for mouldings and extrusions.
- No use of cadmium-based stabilisers or pigments.

EMI protection

- Some PVC-U systems are available with a coating that provides effective screening against electromagnetic interference with no reduction in cable capacity.
- Steel screening insert option.
- Aluminium screening insert option.

Fire performance

- The fire rating for PVC-U is excellent* and PVC-U has all the characteristics required for Fire Escape Time.
- Highly resistant to ignition.
- Does little to contribute to the spread of fire and is classified to Building Regs: Class 0.
- PVC-U chars and is self-extinguishing.
- Has a low rate of smoke production during the early stages of a fire.
- Acts as an effective barrier to flame spread from malfunctioning electrical components within systems.
- Does not produce flaming droplets or burning debris.
- ABS fittings fire rated to UL94 V0.

*see the independent report at www.beama.org.uk

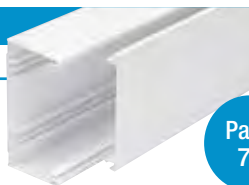
PVC-U multi-compartment perimeter trunking is available in different heights, designs, cable capacities and numbers of compartments to suit all installation requirements. Standard PVC-U products are supplied as white. For further information on colour and finish options please refer to page 2 or call our Technical Team on +44 (0)1424 856688.

Note: you may use the rule on the left of this page to check profile sizes.

Mono 10

100 x 50mm

Small trunking with a single cover suitable for dado application and as a feeder trunking.



Page 7

Sterling Profile 1

167 x 50mm

Dado trunking with three separate compartments and individual covers for each compartment.



Page 20

Mono Plus 20

140 x 50mm

Dado trunking with three compartments and a single cover.



Page 9

Sterling Profile 2

167 x 50mm

Dado and skirting trunking with three separate compartments and individual covers for each compartment.

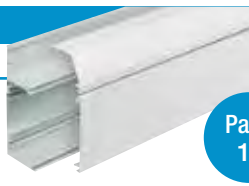


Page 20

Compact 1

130 x 50mm

Dado trunking with one full and one half size compartment.

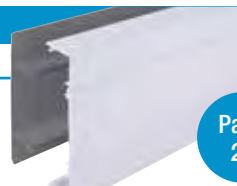


Page 11

Sterling Profile 3

167 x 50mm

Skirting trunking with three separate compartments and individual covers for each compartment.



Page 20

Compact 2

130 x 50mm

Dado and skirting trunking with one full and one half size compartment.

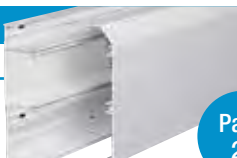


Page 13

Sterling Profile 4

218 x 50mm

Large dado and skirting trunking with one half size and two full compartments with the option of extending the height.



Page 26

Compact 3

181 x 50mm

Dado and skirting trunking with two full size compartments.



Page 15

Sterling Curve Profile 1

167 x 50mm

A curved dado trunking with three segregated compartments.

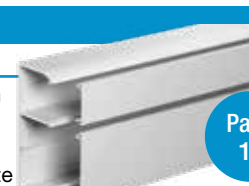


Page 29

Twin165

160 x 65mm

A mid-size dado trunking with one full size compartment and one two-thirds size compartment to accommodate Cat 6 and Cat 6a data cabling.



Page 18

Sterling Curve Profile 2

167 x 50mm

A curved skirting trunking with three segregated compartments.



Page 29

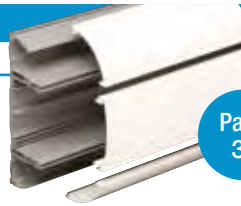


PVC-U perimeter trunking systems

Odyssey

180 x 57mm

Curved profile dado trunking with one main compartment and two smaller outer compartments.



Page 35

Twin Plus

210 x 57mm

Large dado and skirting trunking with two deep compartments incorporating segregation of power and data.

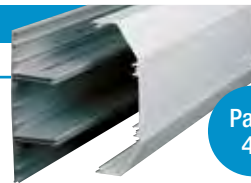


Page 38

XL201

220 x 65mm

Extra large dado trunking with three deep compartments.

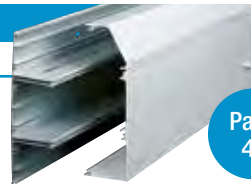


Page 41

XL202

220 x 65mm

Extra large skirting trunking with three deep compartments.

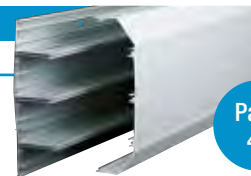


Page 41

XL211

308 x 65mm

Extra large dado trunking with four deep compartments.

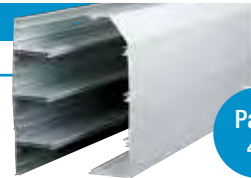


Page 45

XL212

308 x 65mm

Extra large skirting trunking with four deep compartments.



Page 45

Note: you may use the rule on the left of this page to check profile sizes.

Part M

DDA COMPLIANT BOXES FOR VISUAL IMPAIRMENT

Part M of the UK Building Regulations for Visual Impairment requires that face plates differ in colour from their background. Coloured accessory boxes provide a different colour frame to contrast against standard white accessories and are offered as part of our standard product range in blue (RAL5002) and charcoal (RAL7021). Two ranges are available, one compatible with Odyssey and one compatible with other PVC-U and Aluminium trunking systems.



Odyssey trunking with Part M boxes.



Sterling Profile 1 with charcoal Part M flush plate.

Plates are available in other colours subject to set up charges, minimum order quantities and longer lead times.



1 and 2 gang accessory boxes for Odyssey trunking

code	description	pack
DD1510BU	1 gang – blue	20
DD1510CH	1 gang – charcoal	20
DD1520BU	2 gang – blue	10
DD1520CH	2 gang – charcoal	10

1 and 2 gang power and data mounting frame for Odyssey trunking

code	description	pack
DD1560BU	1 gang – blue plate	2
DD1560CH	1 gang – charcoal plate	2
DD1570BU	2 gang – blue plate	2
DD1570CH	2 gang – charcoal	2

Accessory box adaptor for Odyssey trunking (ABS)

code	pack
DD1590BU	1 pair

1 and 2 gang accessory boxes with coloured flush plate for PVC-U and Aluminium trunking systems

code	description	pack
ESPM1BU	1 gang – blue plate	1
ESPM1CH	1 gang – charcoal plate	1
ESPM2BU	2 gang – blue plate	1
ESPM2CH	2 gang – charcoal plate	1

Retrofit accessory box spacer for PVC-U and Aluminium trunking systems

code	description	pack
ES3BU	Part M spacer – blue	4
ES3CH	Part M spacer – charcoal	4



For more information and a quotation contact our Technical Team on +44 (0)1424 856688

MONO 10 TRUNKING

Mono 10 is a compact trunking that is perfectly suited for the smaller office or workshop area.

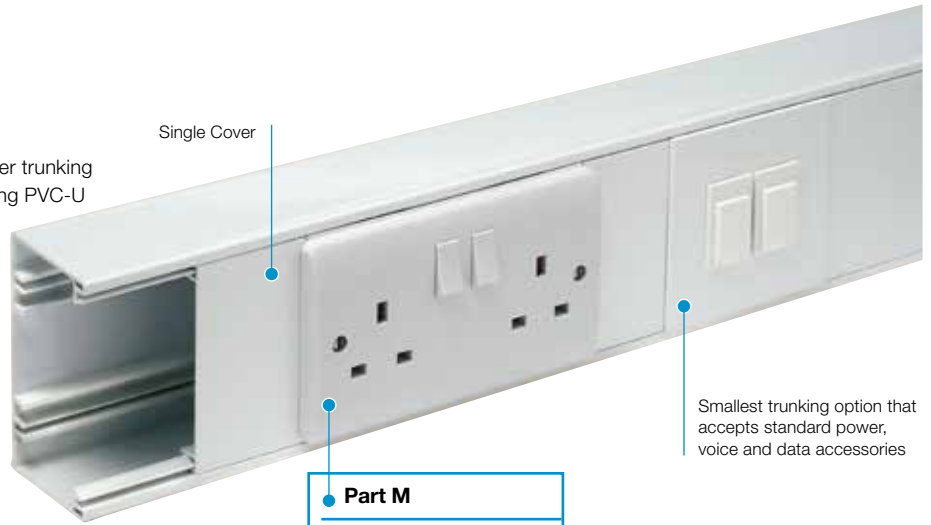


Product information

- 100 x 50mm
- 1 main compartment
- Can be subdivided
- Suitable for dado application and as a feeder trunking
- Self extinguishing and non-flame propagating PVC-U
- Fire clips available to secure cables within trunking and prevent premature collapse in the event of a fire

Data information


- Compliant up to Cat 7a*
- Standard bend radius 25mm
- Adjustable data box 32-40mm



Standard Colour
WH
WH: White

Part M

For box assemblies and spacers that meet the requirements of Part M (DDA) please refer to page 6.



***Data fittings**

For made to order fittings to meet Cat 7a requirements please contact our Technical Team on +44 (0)1424 856688

Basic components



Mono 10 trunking assembly

code	size	pack
EPM10WH	100 x 50mm	1 x 3m

REASSURINGLY RECYCLED OUR MONO 10 TRUNKING BUILT UP PROFILE IS MANUFACTURED USING 11% RECYCLED MATERIAL. WE ARE WORKING TO INCREASE THE LEVEL OF RECYCLED MATERIAL USED IN THIS RANGE.

Fittings



Coupler

code	pack
EC10WH	2



End cap

code	pack
EEC10WH	2



Internal bend

code	pack
EIB10WH	2



External bend

code	pack
EXB10WH	2



Flat angle cover

code	pack
EFA10WH	1



Flat tee

code	pack
EFT10WH	1

Fabricated

p49 Technical Information

PVC-U PERIMETER TRUNKING SYSTEMS

Components



Dividing tray	
code	pack
EDF2	8 x 3m



Cable retainer	
code	pack
EMCR1	10

Firefly clips



Fire clip Mono 10 centre compartment	
code	pack
FCM10C	100

Boxes and plates



*RCD/MCD housing	
code	pack
EAHC1MWH	1

*Up to 4 modules can be accommodated
Note: RCDs are not supplied by Marshall-Tufflex



1 gang accessory box		
code	depth	pack
ESSB1WH	30mm	20



2 gang accessory box		
code	depth	pack
ESSB2WH	30mm	10



Accessory box spacer		
code	size	pack
ES1WH	14mm	4

For use between accessory boxes



1 gang adjustable depth box		
code	depth	pack
EAB1WH	32 – 47mm	10



2 gang adjustable depth box		
code	depth	pack
EAB2WH	32 – 47mm	5



1 gang accessory plate	
code	pack
ESSP1WH	2



2 gang accessory plate	
code	pack
ESSP2WH	2

Part M

For assemblies and spacers that meet the requirements of Part M (DDA) please refer to page 6.



MONO PLUS 20 TRUNKING



'Bio option' available to special order

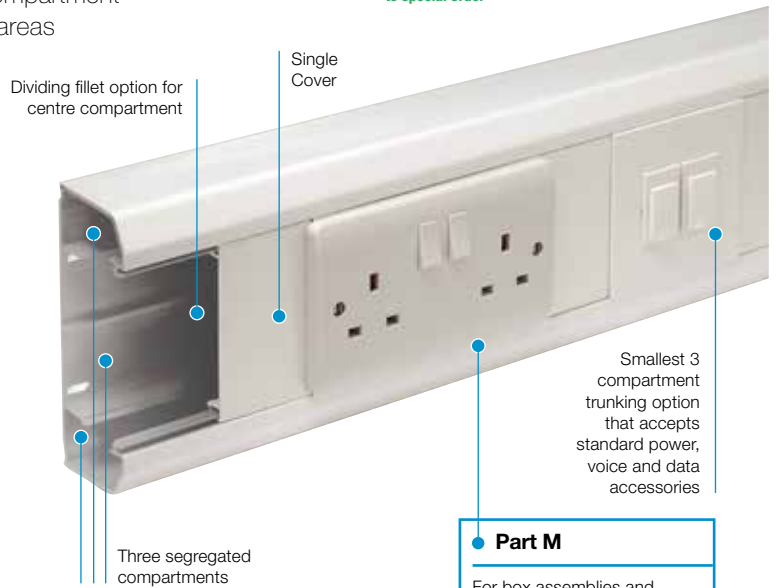
Mono Plus 20 is an economical and stylish three-compartment trunking, compact in size and designed to fit within areas that may have trunking height restrictions.

Product information

- 140 x 50mm
- 1 main compartment and 2 smaller outer compartments
- Can be subdivided
- Suitable for dado application
- Self extinguishing and non-flame propagating PVC-U
- Fire clips available to secure cables within trunking and prevent premature collapse in the event of a fire

Data information

- Compliant up to Cat 7a
- Standard bend radius 25mm
- Data fittings available for bend radius up to 50mm
- Adjustable data box 32-40mm



Standard Colour
WH
WH: White

Part M

For box assemblies and spacers that meet the requirements of Part M (DDA) please refer to page 6.

Basic components



Mono 20 Trunking Assembly

code	size	pack
EPM20WH	140 x 50mm	1 x 3m



Trunking base (including 2 dividing fillets)

code	pack
EMT20WH	4 x 3m



Main compartment cover

code	pack
ETL1WH	8 x 3m

REASSURINGLY RECYCLED

OUR MONO PLUS 20 TRUNKING BUILT UP PROFILE IS MANUFACTURED USING 82% RECYCLED MATERIAL.

Fittings



Coupler

code	pack
EC20WH	2



End cap

code	pack
EEC20WH	2



Internal bend

code	pack
EIB20WH	2



External bend

code	pack
EXB20WH	2



Flat angle

code	pack
EFA20WH	1
Fabricated	



Slow bend

code	pack
EFA20SBWH	1
Fabricated	

p49 Technical Information

Fittings



Flat tee	
code	pack
EFT20WH	1
Fabricated	



Flat tee Gusseted	
code	pack
EFT20GTWH	1
Fabricated	

Components



Dividing fillet	
code	pack
EDF1	8 x 3m



Main crossover bridge	
code	pack
EMCB1	5



Main cable retainer	
code	pack
EMCR1	10

Firefly clips



Fire clip Mono 20 centre compartment	
code	pack
FCM20C	100

Boxes and plates



*RCD/MCD housing	
code	pack
EAHC1MWH	1

*Up to 4 modules can be accommodated
Note: RCDs are not supplied by Marshall-Tufflex



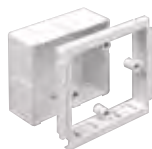
1 gang accessory box		
code	depth	pack
ESSB1WH	30mm	20



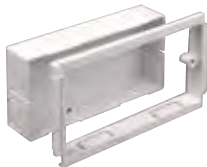
2 gang accessory box		
code	depth	pack
ESSB2WH	30mm	10



Accessory box spacer		
code	size	pack
ES1WH	14mm	4
For use between accessory boxes		



1 gang adjustable depth box		
code	depth	pack
EAB1WH	32 – 47mm	10



2 gang adjustable depth box		
code	depth	pack
EAB2WH	32 – 47mm	5



1 gang accessory plate	
code	pack
ESSP1WH	2



2 gang accessory plate	
code	pack
ESSP2WH	2

Part M

For assemblies and spacers that meet the requirements of Part M (DDA) please refer to page 6 of this section.



COMPACT 1 TRUNKING

Compact 1 is a small, fully segregated two compartment trunking system with a chamfered top profile. This trunking is suited to fit within areas where physical outside dimensions are important, for example, to negotiate above or below radiators and window sills.



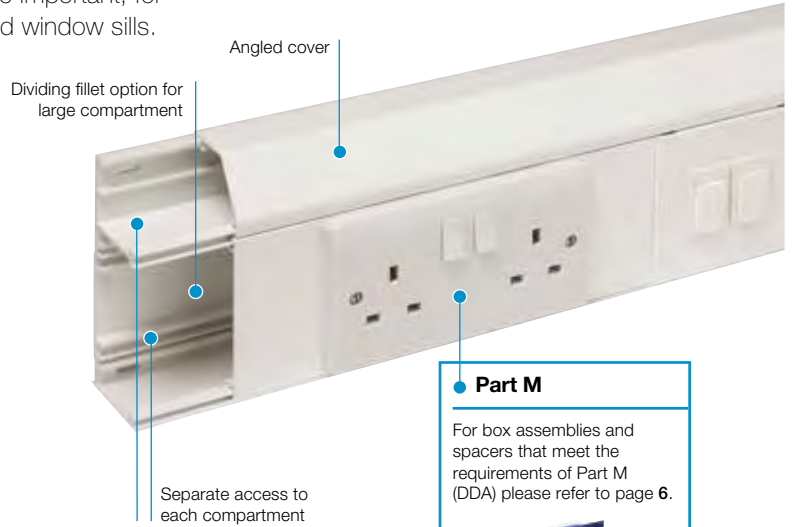
'Bio option' available to special order

Product information

- 130 x 50mm
- 1 full and 1 half size compartment
- For dado installation
- Can be subdivided
- Self extinguishing and non-flame propagating PVC-U

Data information

- Compliant up to Cat 7a
- Standard bend radius 25mm
- Data fittings available for bend radius up to 50mm
- Compact 1 and 2 small compartment can be screened to assist against EMI with no reduction in cable capacity
- Adjustable data box 32-40mm
- Screened data boxes
- Steel screening divider available to BS EN 50714-2



Part M

For box assemblies and spacers that meet the requirements of Part M (DDA) please refer to page 6.

Standard Colour
WH
WH: White

See page 17 for quick reference chart

Basic components



Base unit

code	description	pack
ETB2WH		4 x 3m



Main compartment cover

code	description	pack
ETL1WH		8 x 3m



Angled cover

code	description	pack
ETAC1WH		8 x 3m

REASSURINGLY RECYCLED

OUR COMPACT 1 TRUNKING BUILT UP PROFILE IS MANUFACTURED USING 37% RECYCLED MATERIAL. WE ARE WORKING TO INCREASE THE LEVEL OF RECYCLED MATERIAL USED IN THIS RANGE.

Fittings



Compact 1 Couplers

code	description	pack
ECC1WH	2 piece	5



Compact 1 End caps LH & RH

code	description	pack
EECC1LHWH	2 piece	5
EECC1RHWH	2 piece	5



Compact 1 Internal bend

code	description	pack
EIBC1WH	2 piece	5



Compact 1 Internal bend assembly

code	description	pack
ELIBCD1WH	assemblies	1



Compact 1 External bend

code	description	pack
EXBC1WH	2 piece	5



Compact 1 Flat angle upward

code	description	pack
EFAC1UWH		1



Compact 1 Flat angle downward

code	description	pack
EFAC1DWH		1

Compact 1 flat tees

Compact 1 flat tees are handed to the left or to the right side. For the product you require, please order the following:

- Left upward = EFTC1ULWH
- Left downward = EFTC1DLWH
- Right upward = EFTC1URWH
- Right downward = EFTC1DRWH

For further advice please call the Technical Team on +44 (0)1424 856688.

Fittings



Angled mini trunking adaptor MMT2

code	pack
EATA2WH	5



Angled mini trunking adaptor MMT4

code	pack
EATA4WH	5

Allows the transfer of cables from Compact 1 to Marshall-Tufflex Mini Trunking

Components



Dividing fillet

code	pack
EDF1	8 x 3m



Steel screening divider

code	pack
ESF1	1 x 1.5m

Note: optional steel screening divider to assist in compliance with BS EN 50174-2



Steel screening divider bonding strap

code	pack
ESF2	5



Bonding strap

code	pack
ESBS1	5



Main crossover bridge

code	pack
EMCB1	5

Provides segregation of services crossing from one compartment to another



Angled cable retainer

code	pack
EACR1	10

Provides cable retention in the upper angled or square compartment



Main cable retainer

code	pack
EMCR1	10

The recommended cable retainer for all compartments which use the ETL1WH lid

Boxes and plates



***RCD/MCB housing**

code	pack
EAHC1MWH	1

*Up to 4 modules can be accommodated

Note: RCDs are not supplied by Marshall-Tufflex



1 gang accessory box

code	depth	pack
ESSB1WH	30mm	20



2 gang accessory box

code	depth	pack
ESSB2WH	30mm	10



Accessory box spacer

code	size	pack
ES1WH	14mm	4

For use between accessory boxes



1 gang adjustable depth box

code	depth	pack
EAB1WH	32 – 47mm	10



2 gang adjustable depth box

code	depth	pack
EAB2WH	32 – 47mm	5



1 gang accessory plate

code	pack
ESSP1WH	2



2 gang accessory plate

code	pack
ESSP2WH	2

Part M

For boxes that meet the requirements of Part M (DDA) please refer to page 6.

COMPACT 2 TRUNKING

Compact 2 is a small, fully segregated two compartment trunking system with a square top profile. This trunking is suited to fit within areas where physical outside dimensions are important, for example, to negotiate above or below radiators and window sills.

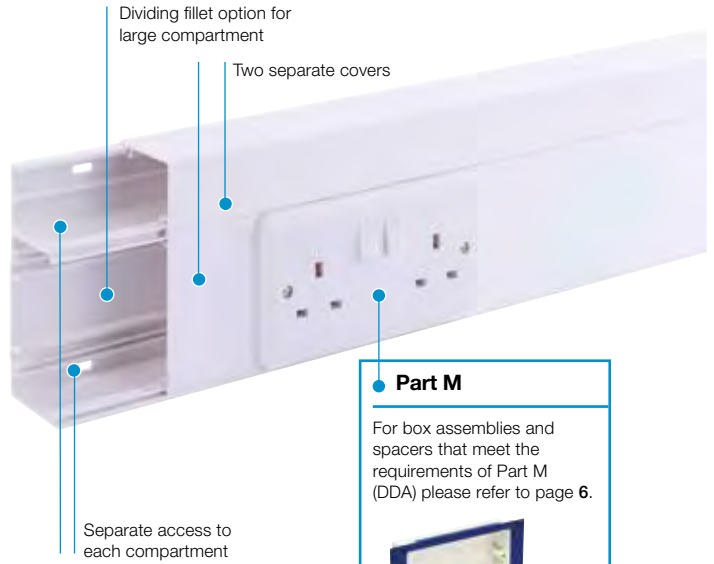


Product information

- 130 x 50mm
- One full size compartment and one half size
- For dado and skirting installation
- **Note:** where Compact 2 is fitted at skirting level, it is recommended that the larger compartment is installed at the top.
- Can be subdivided
- Self extinguishing and non-flame propagating PVC-U

Data information

- Compliant up to Cat 7a
- Standard bend radius 25mm
- Data fittings available for bend radius up to 50mm
- Compact 1 and 2 small compartment can be screened to assist against EMI with no reduction in cable capacity
- Adjustable data box 32-40mm
- Screened data boxes
- Steel screening divider available to BS EN 50714-2



Part M
For box assemblies and spacers that meet the requirements of Part M (DDA) please refer to page 6.

Standard Colour
WH
WH: White

See page 17 for quick reference chart

Basic components

Base unit	Main compartment cover	Square cover
code pack	code pack	code pack
ETB2WH 4 x 3m	ETL1WH 8 x 3m	ETSC1WH 8 x 3m

REASSURINGLY RECYCLED
OUR COMPACT 2 TRUNKING BUILT UP PROFILE IS MANUFACTURED USING 35% RECYCLED MATERIAL. WE ARE WORKING TO INCREASE THE LEVEL OF RECYCLED MATERIAL USED IN THIS RANGE.

Fittings

Compact 2 Couplers	Compact 2 End caps LH & RH	Compact 2 Internal bend	Compact 2 Internal bend assembly and cover only
code description pack	code description pack	code description pack	code description pack
ECC2WH 2 piece 5	EECC2LHWH 2 piece 5	EIBC2WH 2 piece 5	ELIBCD2WH assemblies 1
	EECC2RHWH 2 piece 5		
Compact 2 External bend	Compact 2 Flat angle - upward	Compact 2 Flat angle - downward	
code description pack	code description pack	code description pack	
EXBC2WH 2 piece 5	EFAC2UWH 1	EFAC2DWH 1	

Compact 2 flat tees
Compact 2 flat tees are handed to the left or to the right side. For the product you require, please order the following:
Left upward = EFTC2ULWH
Left downward = EFTC2DLWH
Right upward = EFTC2URWH
Right downward = EFTC2DRWH
For further advice please call the Technical Team on +44 (0)1424 856688.

PVC-U PERIMETER TRUNKING SYSTEMS

Fittings



Square mini trunking adaptor

code	size	pack
ESTA2WH	MMT2	5



Square mini trunking adaptor

code	size	pack
ESTA4WH	MMT4	5

Allows the transfer of cables from Compact 2 to Marshall-Tufflex Mini Trunking

Components



Dividing fillet

code	pack
EDF1	8 x 3m



Steel screening divider

code	pack
ESF1	1 x 1.5m

Note: optional steel screening divider to assist in compliance with BS EN 50174-2



Steel screening divider bonding strap

code	pack
ESF2	5



Bonding strap

code	pack
ESBS1	5



Main crossover bridge

code	pack
EMCB1	5

Provides segregation of services crossing from one compartment to another



Main cable retainer

code	pack
EMCR1	10

The recommended cable retainer for all compartments which use the ETL1WH lid

Boxes and plates



*RCD/MCB housing

code	pack
EAHC1MWH	1

*Up to 4 modules can be accommodated

Note: RCDs are not supplied by Marshall-Tufflex



1 gang accessory box

code	depth	pack
ESSB1WH	30mm	20



2 gang accessory box

code	depth	pack
ESSB2WH	30mm	10



Accessory box spacer

code	size	pack
ES1WH	14mm	4

For use between accessory boxes



1 gang adjustable depth box

code	depth	pack
EAB1WH	32 – 47mm	10



2 gang adjustable depth box

code	depth	pack
EAB2WH	32 – 47mm	5



1 gang accessory plate

code	pack
ESSP1WH	2



2 gang accessory plate

code	pack
ESSP2WH	2

Part M

For boxes that meet the requirements of Part M (DDA) please refer to page 6.

COMPACT 3 TRUNKING

Compact 3 is a fully segregated trunking system with two main compartments suited for installations requiring larger cable capacity.



'Bio option' available to special order

Product information

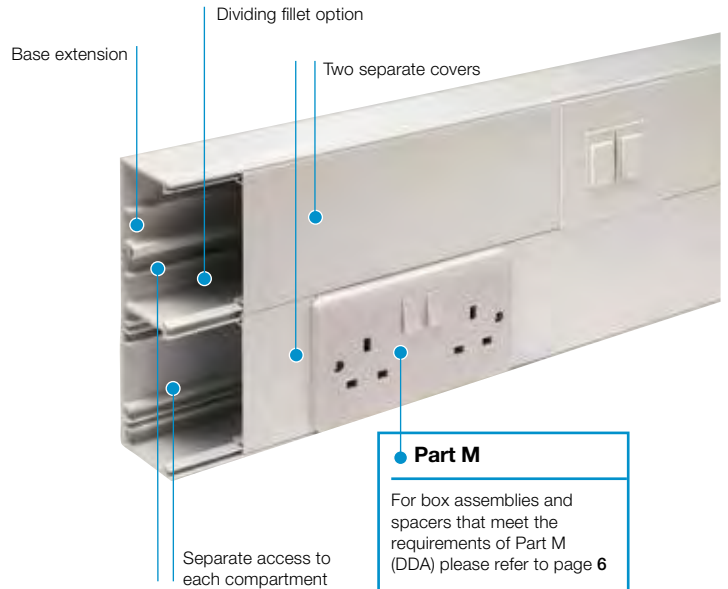
- 181 x 50mm
- 2 full size compartments
- For dado and skirting installation
- Can be subdivided
- Self extinguishing and non-flame propagating PVC-U

Data information

- Compliant up to Cat 7a
- Standard bend radius 25mm
- Data fittings available for bend radius up to 50mm
- Adjustable data box 32-40mm
- Screened data boxes
- Steel screening divider available to BS EN 50714-2

Standard Colour
WH
WH: White

See page 17 for quick reference chart



Part M

For box assemblies and spacers that meet the requirements of Part M (DDA) please refer to page 6

Basic components

Base unit	Main compartment cover	Base extension
code pack	code pack	code pack
ETB2WH 4 x 3m	ETL1WH 8 x 3m	EBE1WH 4 x 3m

REASSURINGLY RECYCLED

OUR COMPACT 3 TRUNKING BUILT UP PROFILE IS MANUFACTURED USING 37% RECYCLED MATERIAL. WE ARE WORKING TO INCREASE THE LEVEL OF RECYCLED MATERIAL USED IN THIS RANGE.

Fittings

Compact 3 Coupler	Compact 3 End caps LH & RH	Compact 3 Internal bend	Compact 3 Internal bend assembly and cover only
code description pack	code description pack	code description pack	code description pack
ECC3WH 2 piece 5	EECC3LHWH 2 piece 5 EECC3RHWH 2 piece 5	EIBC3WH 2 piece 5	ELIBCD3WH assemblies 1
Compact 3 External bend	Compact 3 Flat angle	Compact 3 Flat tee	
code description pack	code description pack	code description pack	
EXBC3WH 2 piece 5	EFAC3WH 1	EFTC3WH 1	

PVC-U PERIMETER TRUNKING SYSTEMS

Components



Dividing fillet		
code	pack	
EDF1	8 x 3m	



Steel screening divider		
code	pack	
ESF1	1 x 1.5m	

Note: optional steel screening divider to assist in compliance with BS EN 50174-2



Steel screening divider bonding strap		
code	pack	
ESF2	5	



Bonding strap		
code	pack	
ESBS1	5	



Main crossover bridge		
code	pack	
EMCB1	5	

Provides segregation of services crossing from one compartment to another



Main cable retainer		
code	pack	
EMCR1	10	

The recommended cable retainer for all compartments which use the ETL1WH lid



*RCD/MCB Housing		
code	pack	
EAHC1MWH	1	

*Up to 4 modules can be accommodated
Note: RCDs are not supplied by Marshall-Tufflex



1 gang accessory box		
code	depth	pack
ESSB1WH	30mm	20



2 gang accessory box		
code	depth	pack
ESSB2WH	30mm	10

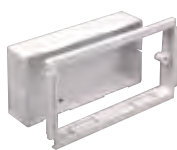


Accessory box spacer		
code	size	pack
ES1WH	14mm	4

For use between accessory boxes



1 gang adjustable depth box		
code	depth	pack
EAB1WH	32 – 47mm	10



2 gang adjustable depth box		
code	depth	pack
EAB2WH	32 – 47mm	5



1 gang accessory plate		
code	pack	
ESSP1WH	2	



2 gang accessory plate		
code	pack	
ESSP2WH	2	

Part M

For boxes that meet the requirements of Part M (DDA) please refer to page 6.













Boxes and plates

Quick reference chart
Compact trunking

2 compartment

Compact 1 130 x 50mm	Compact 2 130 x 50mm	Compact 3 181 x 50mm
-------------------------	-------------------------	-------------------------



Base unit Pack 4 x 3m		ETB2WH	ETB2WH	ETB2WH
Base extension Pack 4 x 3m		-	-	EBE1WH
Main compartment cover Pack 8 x 3m		ETL1WH	ETL1WH	2 x ETL1WH
Angled cover Pack 8 x 3m		ETAC1WH	-	-
Square cover Pack 8 x 3m		-	ETSC1WH	-
Couplers Pack 5		ECC1WH	ECC2WH	ECC3WH
End caps Pack 5		EECC1LHWH EECC1RHWH	EECC2LHWH EECC2RHWH	EECC3LHWH EECC3RHWH
Internal bends Pack 5		EIBC1WH	EIBC2WH	EIBC3WH
Internal bend – cover only Pack 1		EIBCD1WH	EIBCD2WH	EIBCD3WH
External bends Pack 5		EXBC1WH	EXBC2WH	EXBC3WH
Flat angles – up or down Pack 1		EFAC1UWH EFAC1DWH	EFAC2UWH EFAC2DWH	EFAC3WH
Flat tees – up or down Pack 1 Left or right handed Upward or downward		EFTC1ULWH EFTC1URWH EFTC1DLWH EFTC1DRWH	EFTC2ULWH EFTC2URWH EFTC2DLWH EFTC2DRWH	EFTC3WH

TWIN165 TRUNKING



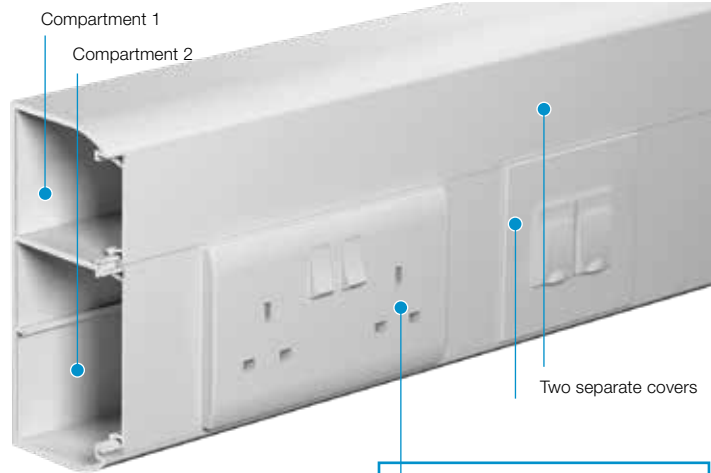
Twin165 trunking is a mid-size, two-compartment system, designed as a compact variation of Twin Plus. Twin165 offers high capacity for up to Cat 7a data cabling for specification in commercial, industrial and educational environments.

Product information

- 160 x 65mm
- 2 compartment trunking with 60/40 split
- Separate cover access to each compartment
- Suitable for dado application
- Adjustable bends allow between 85° and 95° to accommodate building tolerances
- Self extinguishing and non-flame propagating PVC-U
- Fire clips available to secure cables within trunking and prevent premature collapse in the event of a fire

Data information

- Compliant up to Cat 7a
- Standard bend radius 25mm
- Data fittings available for bend radius up to 50mm
- Adjustable data box 32-47mm
- Steel screening divider available to BS EN 50714-2



Standard Colour
WH
WH: White

REASSURINGLY RECYCLED
 OUR TWIN165 TRUNKING BUILT UP PROFILE IS MANUFACTURED USING 78% RECYCLED MATERIAL.

Part M

For box assemblies and spacers that meet the requirements of Part M (DDA) please refer to page 6

PVC-U PERIMETER TRUNKING SYSTEMS

Basic components

Base unit	Cover small (Comp 1)	Cover large (Comp 2)
code pack	code pack	code pack
AY1120WH 4 x 3m	AY1130WH 8 x 3m	ETL1WH 8 x 3m

Twin165 fittings

Compartment 1 is the smaller compartment.

Compartment 2 is the larger compartment.

When ordering end caps, flat angles and tees, please take care to ascertain which compartment is to be installed uppermost to ensure you receive the correct fittings.

Fittings (ABS)

Coupler	End cap LH (Comp 1 top)	End cap RH (Comp 1 top)	End cap LH (Comp 2 top)	Internal bend adjustable
code pack	code pack	code pack	code pack	code pack
AY1210WH 1	AY1220WH 1	AY1230WH 1	AY1240WH 1	
External bend adjustable				
code pack				
AY1250WH 1				

p49 Technical Information

Fittings



Flat angle up (comp 1 top)
Flat angle down (comp 2 top)
 code pack
AY1310WH 1



Flat angle down (comp 1 top)
Flat angle up (comp 2 top)
 code pack
AY1320WH 1



Flat tee up (comp 1 top)
Flat tee down (comp 2 top)
 code pack
AY1330WH 1



Flat tee down (comp 1 top)
Flat tee up (comp 2 top)
 code pack
AY1350WH 1

Components



Steel screening divider
 code pack
ESF200 1 x 1.5m

Note: optional steel screening divider to assist in compliance with BS EN 50174-2



Steel screening divider bonding strap
 code pack
ESF2 5



Bonding strap
 code pack
ESBS1 5

Firefly clips



Fire clip Twin165 large compartment
 code pack
FCT165L 50



Fire clip Twin165 small compartment
 code pack
FCT165S 100

Boxes and plates



***RCD/MCD housing**
 code pack
EAHC1MWH 1

*Up to 4 modules can be accommodated
Note: RCDs are not supplied by Marshall-Tufflex



1 gang accessory box
 code depth pack
ESSB1WH 30mm 20



2 gang accessory box
 code depth pack
ESSB2WH 30mm 10

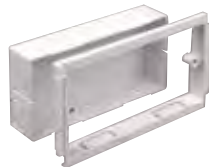


Accessory box spacer
 code size pack
ES1WH 14mm 4

For use between accessory boxes



1 gang adjustable depth box
 code depth pack
EAB1WH 32 – 47mm 10



2 gang adjustable depth box
 code depth pack
EAB2WH 32 – 47mm 5



1 gang accessory plate
 code pack
ESSP1WH 2



2 gang accessory plate
 code pack
ESSP2WH 2

Part M

For assemblies and spacers that meet the requirements of Part M (DDA) please refer to page 6.



STERLING PROFILE 1, 2 AND 3

Sterling Profile systems 1 to 3 are popular and stylish looking perimeter dado and skirting systems that are easy and cost effective to use. A firm favourite for many years due to its versatility, range of fittings and accessories and suitability for many different cable management installation needs.

Product information

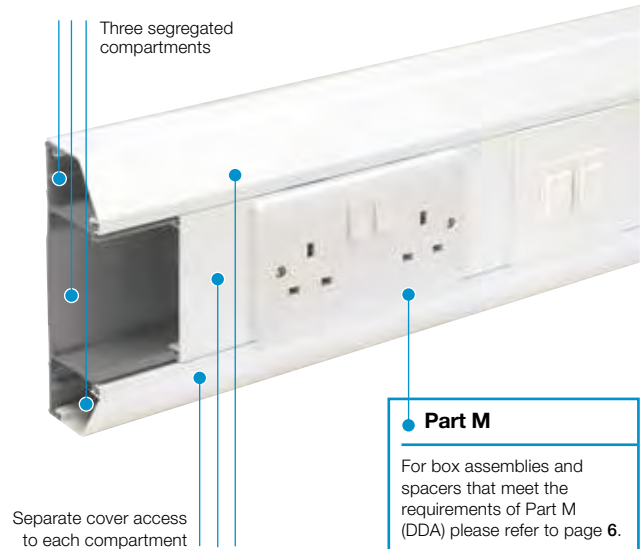
- 167 x 50mm
- 3 segregated compartments
- Suitable for dado and skirting application
- Can be fed from larger trunking systems for increased cable distribution
- Boxes available to comply with Part M (DDA)
- Comprehensive range of flush power and data accessories
- Moulded fittings with Profile 1 and Profile 2
- Self extinguishing and non-flame propagating PVC-U
- Fire clips available to secure cables within trunking and prevent premature collapse in the event of a fire

Data information

- Compliant up to Cat 7a
- Standard bend radius 25mm
- Data fittings available for bend radius up to 50mm
- Compartment can be screened to assist against EMI with no reduction in cable capacity (refer to p103)
- Adjustable data box 32-40mm
- Screened data boxes
- Steel screening divider available to BS EN 50714-2



'Bio option' available to special order



Part M

For box assemblies and spacers that meet the requirements of Part M (DDA) please refer to page 6.

PVC-U PERIMETER TRUNKING SYSTEMS

Standard Colours	
WH	CH
WH: White CH: Charcoal	

Colour options: Charcoal solid colour option is available as standard item for selected Profile 1 fittings. Please indicate when ordering by replacing the WH colour code suffix with CH for charcoal.

See page 25 for quick reference chart

Trunking profiles



Sterling Profile 1 trunking assembly

code	size	pack
EP1MWH	167 x 50mm	1 x 3m

Charcoal is available as standard for Profile 1



Sterling Profile 2 trunking assembly

code	size	pack
EP2MWH	167 x 50mm	1 x 3m



Sterling Profile 3 trunking assembly

code	size	pack
EP3MWH	167 x 50mm	1 x 3m

Basic components



Base unit

code	pack
ETB1M	4 x 3m

Please note the colour of the unseen base ETB1M may vary



Main compartment cover

code	pack
ETL1WH	8 x 3m

Charcoal is available as standard



Angled cover

code	pack
ETAC1WH	8 x 3m

Charcoal is available as standard



Square cover

code	pack
ETSC1WH	8 x 3m

REASSURINGLY RECYCLED

OUR WHITE STERLING BUILT UP PROFILES ARE MANUFACTURED USING THE FOLLOWING PERCENTAGES OF RECYCLED MATERIAL.

PROFILE 1 62%
PROFILE 2 57%
PROFILE 3 54%

p49 Technical Information

Profile 1 fittings



Profile 1 Coupler

code	description	pack
ECP1MWH	1 piece	2

Charcoal is available as standard



Profile 1 End cap

code	description	pack
EERP1MWH	1 piece	2

Universal for both LH & RH
Charcoal is available as standard



Profile 1 Internal bend

code	description	pack
EIBP1MWH	1 piece	2

Charcoal is available as standard



Profile 1 Internal bend cover

code	description	pack
EIBD1WH		1



Profile 1 Internal bend assembly

code	description	pack
ELIBD1WH		1

Charcoal is available as standard



Profile 1 External bend

code	description	pack
EXBP1MWH	1 piece	2

Charcoal is available as standard



Profile 1 Flat angle - up/down cover (ABS)

code	description	pack
EFA1MWH		1

Charcoal is available as standard



With integral bend radius control

Profile 1 Flat angle - up/down complete (ABS)

code	description	pack
EFA1MBWH		1

Charcoal is available as standard



Profile 1 Flat tee cover (ABS)

code	description	pack
EFT1MWH		1

Charcoal is available as standard



With integral bend radius control

Profile 1 Flat tee complete (ABS)

code	description	pack
EFT1MBWH		1

Charcoal is available as standard

Profile 2 fittings



Profile 2 Coupler

code	description	pack
ECP2MWH	1 piece	2



Profile 2 End cap

code	description	pack
EERP2MLHWH	(left) 1 piece	2
EERP2MRHWH	(right) 1 piece	2



Profile 2 Internal bend

code	description	pack
EIBP2MWH	1 piece	2



Profile 2 Internal bend cover

code	description	pack
EIBD2WH		1



Profile 2 Internal bend assembly

code	description	pack
ELIBD2WH		1

Charcoal is available as standard



Profile 2 External bend

code	description	pack
EXBP2MWH	1 piece	2

Charcoal is available as standard



Profile 2 Flat angle - upward

code	description	pack
EFA2UWH		1

Charcoal is available as standard



Profile 2 Flat angle - downward

code	description	pack
EFA2DWH		1

Charcoal is available as standard

Profile 3 fittings



Profile 3 Coupler

code	description	pack
ECP3WH	3 piece	2
ECHP3WH	1 piece	2



Profile 3 End cap

code	description	pack
EECP3WH	3 piece	2
EECHP3WH	1 piece	2

Universal for both LH & RH



Profile 3 Internal bend

code	description	pack
EIBP3WH	3 piece	2
EIBHP3WH	1 piece	2



Profile 3 Internal bend cover

code	pack
EIBD3WH	1



Profile 3 Internal bend assembly

code	pack
ELIBD3WH	1



Profile 3 External bend

code	description	pack
EXBP3WH	3 piece	2
EXBHP3WH	1 piece	2



Profile 3 Flat angle

code	pack
EFA3WH	1



Profile 3 Flat tee

code	pack
EFT3WH	1

Fittings



Angled mini trunking adaptor MMT2

code	pack
EATA2WH	5



Angled mini trunking adaptor MMT4

code	pack
EATA4WH	5



Square mini trunking adaptor MMT2

code	pack
ESTA2WH	5



Square mini trunking adaptor MMT4

code	pack
ESTA4WH	5

Firefly clips



Fire clip Sterling centre compartment

code	pack
FCSPC	50



Fire clip Sterling angle & curve compartment

code	pack
FCSPAC	100



Fire clip Sterling square compartment

code	pack
FCSPS	100

Components



Main crossover bridge

code	pack
EMCB1	5



Angled cable retainer

code	pack
EACR1	10

Boxes and plates



***RCD/MCB Housing**

code	pack
EAHC1MWH	1

Not available in charcoal
 *Up to 4 modules can be accommodated
 Note: RCDs are not supplied by Marshall-Tufflex



1 gang accessory box

code	depth	pack
ESSB1WH	30mm	20

ESSB1 and ESSB2 are also available from stock in charcoal



2 gang accessory box

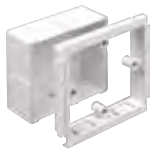
code	depth	pack
ESSB2WH	30mm	10



Accessory box spacer

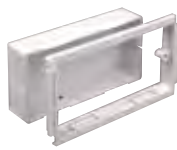
code	size	pack
ES1WH	14mm	4

For use between accessory boxes



1 gang adjustable depth box

code	depth	pack
EAB1WH	32 – 47mm	10



2 gang adjustable depth box

code	depth	pack
EAB2WH	32 – 47mm	5



1 gang accessory plate

code	pack
ESSP1WH	2



2 gang accessory plate

code	pack
ESSP2WH	2

Part M

For boxes that meet the requirements of Part M (DDA) please refer to page 6



Screening



Steel screening divider

code	pack
ESF1	1 x 1.5m

Note: optional steel screening divider to assist in compliance with BS EN 50174-2



Steel screening divider bonding strap

code	pack
ESF2	5



Bonding strap

code	pack
ESBS1	5



Screened base unit (comp 1 & 3)

code	pack
ETB1MCS13	1 x 3m



Screened angled cover

code	pack
ETAC1CSWH	1 x 3m

(2 angled covers needed)



1 gang screened accessory box

code	depth	pack
ESSB1SWH	30mm	20



2 gang screened accessory box

code	depth	pack
ESSB2SWH	30mm	10

Screening

Conductive spray (CS) is unique to Marshall-Tufflex and is applied in the factory to assist in screening from electromagnetic interference to data and communications cabling within trunking systems. The coating is applied to a range of data boxes, covers, clip-on components and fabricated fittings.

WARNING: A CS coating is not suitable for low voltage circuits. As per the current version of BS 7671 wiring regulations. For data/voice use only.

Screened compartments key to coding

CS13 = screening in compartments 1 and 3

Gascoigne Primary School

Sterling Profile 1

Sterling Profile 1 dado system has been used extensively in the expansion of Gascoigne Primary School, Barking, Essex, the largest primary school in the UK.

The most recent development of the school is an £11m project providing a new three-storey facility to accommodate 1,500 pupils. To power this large and complex building, considerable electrical wiring was required. Sterling Profile 1 system in white was used with a charcoal main compartment cover, a versatile, cost-effective, and high-quality trunking that has a proven track-record of meeting the demands of school environments.

“One of the key factors in our decision was Sterling’s versatility – it can be used at a 90° bend, allowing installers to easily fit it in the new school without too much doctoring. Supply chain was also very important – we used hundreds of metres at Gascoigne, with the three compartment trunking in every single room apart from the kitchen and main hall. Being the largest school in the UK this is a significant project and Sterling has more than stood up to the challenge. We have tried competitor products in the past but Marshall-Tufflex can’t be beaten on quality or price.”



QUALITY REASSURANCE

PVC-U trunking made from recycled windows is more robust than product made from virgin grade material.



**REASSURINGLY
RECYCLED**

Quick reference chart
Sterling Profile 1, 2 and 3

			3 compartment		
			Profile 1	Profile 2	Profile 3
			167 x 50mm	167 x 50mm	167 x 50mm
					
Base unit					
Pack	4 x 3m		ETB1M	ETB1M	ETB1M
Main compartment cover					
Pack	8 x 3m		ETL1WH	ETL1WH	ETL1WH
Angled cover					
Pack	8 x 3m		2 x ETAC1WH	ETAC1WH	-
Square cover					
Pack	8 x 3m		-	ETSC1WH	2 x ETSC1WH
Couplers					
Pack	2		ECP1MWH	ECP2MWH	ECP3WH or ECHP3WH
End caps					
Pack	2		EECP1MWH	EECP2MRHWH EECP2MLHWH	EECP3WH or EECHP3WH
Internal bend					
Pack	2		EIBP1MWH	EIBP2MWH	EIBP3WH or EIBHP3WH
Internal bend assemblies					
Pack	1		ELIBD1WH	ELIBD2WH	ELIBD3WH
Internal bend covers only					
Pack	1		EIBD1WH	EIBD2WH	EIBD3WH
External bends					
Pack	2		EXBP1MWH	EXBP2MWH	EXBP3WH or EXBHP3WH
Flat angles up or down					
Pack	1		EFA1MWH or EFA1MBWH	EFA2UWH EFA2DWH	EFA3WH
Flat tees up or down					
Pack	1		EFT1MWH or EFT1MBWH	EFT2UWH †	EFT3WH

Note: Profile 2 and 3 flat angles and tees are fabricated

† Sterling Profile 2 flat tees
Sterling Profile 2 flat tees use an angled cover for the upwards cover and tee.

STERLING PROFILE 4

Sterling Profile system 4 is an extendable perimeter skirting trunking system that provides increased cable capacity with large multi compartments that can be subdivided to carry a greater range of services.



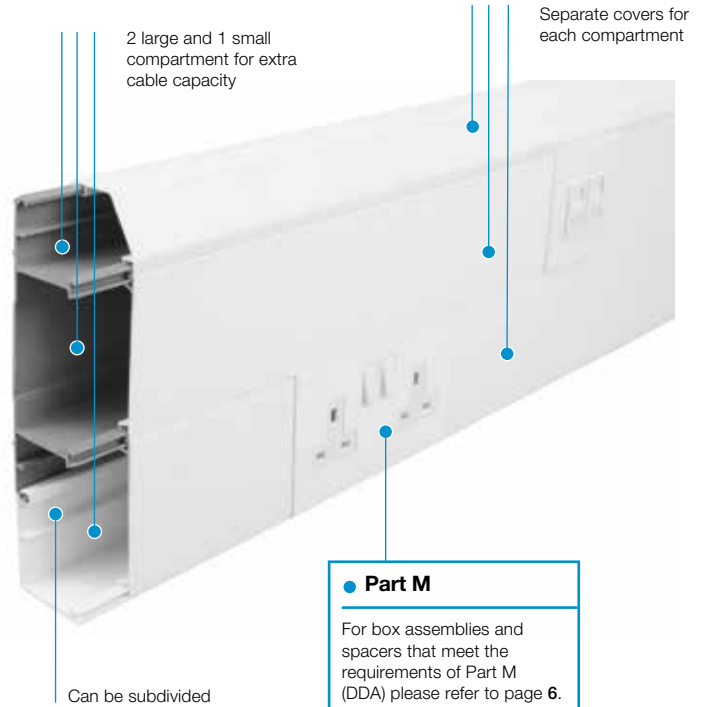
'Bio option' available to special order

Product information

- 218 x 50mm
- 2 large and 1 small compartment
- Can be subdivided
- Suitable for dado and skirting application
- Can be fed from larger trunking systems for increased cable distribution
- Boxes available to comply with Part M (DDA)
- Comprehensive range of flush power and data accessories
- Improved design to base unit to give greater cable capacity
- Self extinguishing and non-flame propagating PVC-U

Data information

- Compliant up to Cat 7a
- Standard bend radius 25mm
- Data fittings available for bend radius up to 50mm
- Adjustable data box 32-40mm
- Screened data boxes
- Steel screening divider available to BS EN 50714-2



Standard Colour
WH
WH: White

Part M

For box assemblies and spacers that meet the requirements of Part M (DDA) please refer to page 6.

REASSURINGLY RECYCLED

OUR STERLING PROFILE 4 BUILT UP PROFILE IS MANUFACTURED USING 74% RECYCLED MATERIAL.

PVC-U PERIMETER TRUNKING SYSTEMS

Trunking profiles



Sterling Profile 4

size
218 x 50mm

Basic components



Base unit

code	pack
ETB1M	4 x 3m



Base extension

code	pack
EBE1WH	4 x 3m



Main compartment cover

code	pack
ETL1WH	8 x 3m



Angled cover

code	pack
ETAC1WH	8 x 3m

Please note the colour of the unseen base ETB1M may vary



Profile 4 Coupler

code	pack
ECP4WH	5



Profile 4 End cap

code	pack
EECP4LHWH	5
EECP4RHWH	5



Profile 4 Internal bend

code	pack
EIBP4WH	5



Profile 4 Internal bend cover

code	pack
EIBD4WH	1



Profile 4 Internal bend assemblies

code	pack
ELIBD4WH	1



Profile 4 External bend

code	pack
EXBP4WH	5



Profile 4 Flat angle - up

code	pack
EFA4UWH	1



Profile 4 Flat angle - down

code	pack
EFA4DWH	1



Angled mini trunking adaptor MMT2

code	pack
EATA2WH	5



Angled mini trunking adaptor MMT4

code	pack
EATA4WH	5

WE ARE DRIVING...

For all PVC-U products installed in buildings to be manufactured using 50% recycled material by 2028.



Components



Dividing fillet		
code	pack	
EDF1	8 x 3m	



Dividing tray		
code	pack	
EDF2	8 x 3m	



Steel screening divider		
code	pack	
ESF1	1 x 1.5m	



Steel screening divider bonding strap		
code	pack	
ESF2	5	

Note: optional steel screening divider to assist in compliance with BS EN 50174-2



Bonding strap		
code	pack	
ESBS1	5	



Main crossover bridge		
code	pack	
EMCB1	5	



Angled cable retainer		
code	pack	
EACR1	10	



Main cable retainer		
code	pack	
EMCR1	10	

Boxes and plates



*RCD/MCB Housing		
code	pack	
EAHC1MWH	1	

*Up to 4 modules can be accommodated
Note: RCDs are not supplied by Marshall-Tufflex



1 gang accessory box		
code	depth	pack
ESSB1WH	30mm	20



2 gang accessory box		
code	depth	pack
ESSB2WH	30mm	10

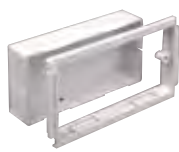


Accessory box spacer		
code	size	pack
ES1WH	14mm	4

For use between accessory boxes



1 gang adjustable depth box		
code	depth	pack
EAB1WH	32 – 47mm	10



2 gang adjustable depth box		
code	depth	pack
EAB2WH	32 – 47mm	5



1 gang accessory plate		
code	pack	
ESSP1WH	2	



2 gang accessory plate		
code	pack	
ESSP2WH	2	

Part M

For box assemblies and spacers that meet the requirements of Part M (DDA) please refer to page 6



STERLING CURVE

Sterling Curve Profile 1 and 2 are stylish curved perimeter dado and skirting systems that are easy and cost effective to use. Sterling Curve is a sleek data compliant medium sized trunking system with three segregated compartments. The adaptable system has 1 or 2 curved data compartments designed to stop clutter, avoid dust traps and to make cleaning easy.



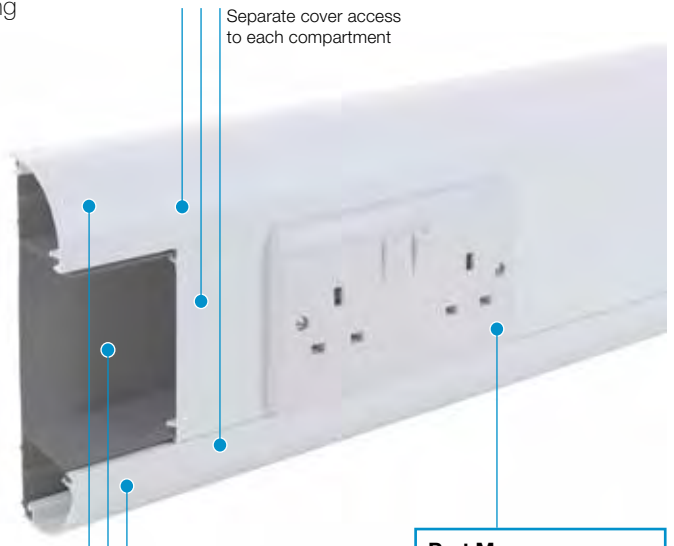
Product information

- 167 x 50mm
- 3 segregated compartments
- Suitable for dado and skirting application
- Boxes available to comply with Part M (DDA)
- Comprehensive range of flush power and data accessories
- Single piece moulded fittings
- Flat Tees and Flat Angles have integral bend radius control
- Profile 1 is available in charcoal as standard
- Self extinguishing and non-flame propagating PVC-U
- Fire clips available to secure cables within trunking and prevent premature collapse in the event of a fire

Data information

- Compliant up to Cat 7a
- Standard bend radius 25mm
- Data fittings available for bend radius up to 50mm
- Compartment can be screened to assist against EMI with no reduction in cable capacity (refer to p103)
- Adjustable data box 32-40mm
- Screened data boxes
- Steel screening divider available to BS EN 50714-2

See page 33 for quick reference chart



Three segregated compartments

Separate cover access to each compartment

Part M

For box assemblies and spacers that meet the requirements of Part M (DDA) please refer to page 6.

Standard Colours	
WH	CH
WH: White CH: Charcoal	

Colour options: Charcoal solid colour option is available as standard item for selected Profile 1 fittings. Please indicate when ordering by replacing the WH colour code suffix with CH for charcoal.

Trunking profiles



Curve Profile 1 trunking assembly

code	size	pack
CEP1MWH	167 x 50mm	1 x 3m

Charcoal is available as standard for Profile 1



Curve Profile 2 trunking assembly

code	size	pack
CEP2MWH	167 x 50mm	1 x 3m

REASSURINGLY RECYCLED

OUR WHITE STERLING CURVE BUILT UP PROFILES ARE MANUFACTURED USING THE FOLLOWING PERCENTAGES OF RECYCLED MATERIAL.

PROFILE 1 66%
PROFILE 2 60%

Basic components



Base unit

code	pack
ETB1M	4 x 3m

Please note the colour of the unseen base ETB1M may vary



Main compartment cover

code	pack
ETL1WH	8 x 3m

Charcoal is available as standard



Curve cover

code	pack
CETC1WH	8 x 3m

Charcoal is available as standard



Square cover

code	pack
ETSC1WH	8 x 3m

Firefly clips



NEW

Fire clip Sterling centre compartment

code	pack
FCSPC	50



NEW

Fire clip Sterling angle & curve compartment

code	pack
FCSPAC	100



NEW

Fire clip Sterling square compartment

code	pack
FCSPS	100

Boxes and plates



***RCD/MCB Housing**

code	pack
EAHC1MWH	1

Not available in charcoal
*Up to 4 modules can be accommodated
Note: RCDs are not supplied by Marshall-Tufflex



1 gang accessory box

code	depth	pack
ESSB1WH	30mm	20



2 gang accessory box

code	depth	pack
ESSB2WH	30mm	10



Accessory box spacer

code	size	pack
ES1WH	14mm	4

For use between accessory boxes



1 gang adjustable depth box

code	depth	pack
EAB1WH	32 – 47mm	10



2 gang adjustable depth box

code	depth	pack
EAB2WH	32 – 47mm	5



1 gang accessory plate

code	pack
ESSP1WH	2



2 gang accessory plate

code	pack
ESSP2WH	2

Screening



Steel screening divider

code	pack
ESF1	1 x 1.5m

Note: optional steel screening divider to assist in compliance with BS EN 50174-2



Steel screening divider bonding strap

code	pack
ESF2	5



Bonding strap

code	pack
ESBS1	5



1 gang screened accessory box

code	depth	pack
ESSB1SWH	30mm	20



2 gang screened accessory box

code	depth	pack
ESSB2SWH	30mm	10

Screening

Conductive spray (CS) is unique to Marshall-Tufflex and is applied in the factory to assist in screening from electromagnetic interference to data and communications cabling within trunking systems. The coating is applied to a range of data boxes, covers, clip-on components and fabricated fittings.

WARNING: A CS coating is not suitable for low voltage circuits. As per the current version of BS 7671 wiring regulations. For data/voice use only.

Screened compartments key to coding

CS13 = screening in compartments 1 and 3

p49
Technical Information

Curve Profile 1 fittings



Curve Profile 1 Coupler
 code pack
CECP1MWH 2
 Charcoal is available as standard



Curve Profile 1 End cap
 code pack
CEECP1MWH 2
 Charcoal is available as standard



Curve Profile 1 Internal bend
 code pack
CEIBP1MWH 2
 Charcoal is available as standard



Curve Profile 1 External bend
 code pack
CEXBP1MWH 2
 Charcoal is available as standard



Curve Profile 1 Flat angle cover (ABS)
 code pack
CEFA1MWH 1
 Charcoal is available as standard



Curve Profile 1 Flat angle complete (ABS)
 code pack
CEFA1MBWH 1
 Charcoal is available as standard



Curve Profile 1 Flat tee cover (ABS)
 code pack
CEFT1MWH 1



Curve Profile 1 Flat tee complete (ABS)
 code pack
CEFT1MBWH 1
 Charcoal is available as standard

Curve Profile 2 fittings



Curve Profile 2 Coupler
 code pack
CECP2MWH 2



Curve Profile 2 End cap
 code pack
CEECP2MRHWH (right) 2
CEECP2MLHWH (left) 2



Curve Profile 2 Internal bend
 code pack
CEIBP2MWH 2



Curve Profile 2 External bend
 code pack
CEXBP2MWH 2



Curve Profile 2 Flat angle up cover (ABS)
 code pack
CEFA2UMWH 1



Curve Profile 2 Flat angle up complete (ABS)
 code pack
CEFA2UMBWH 1



Curve Profile 2 Flat tee up cover (ABS)
 code pack
CEFT2MWH 1



Curve Profile 2 Flat tee up complete (ABS)
 code pack
CEFT2MBWH 1

Components



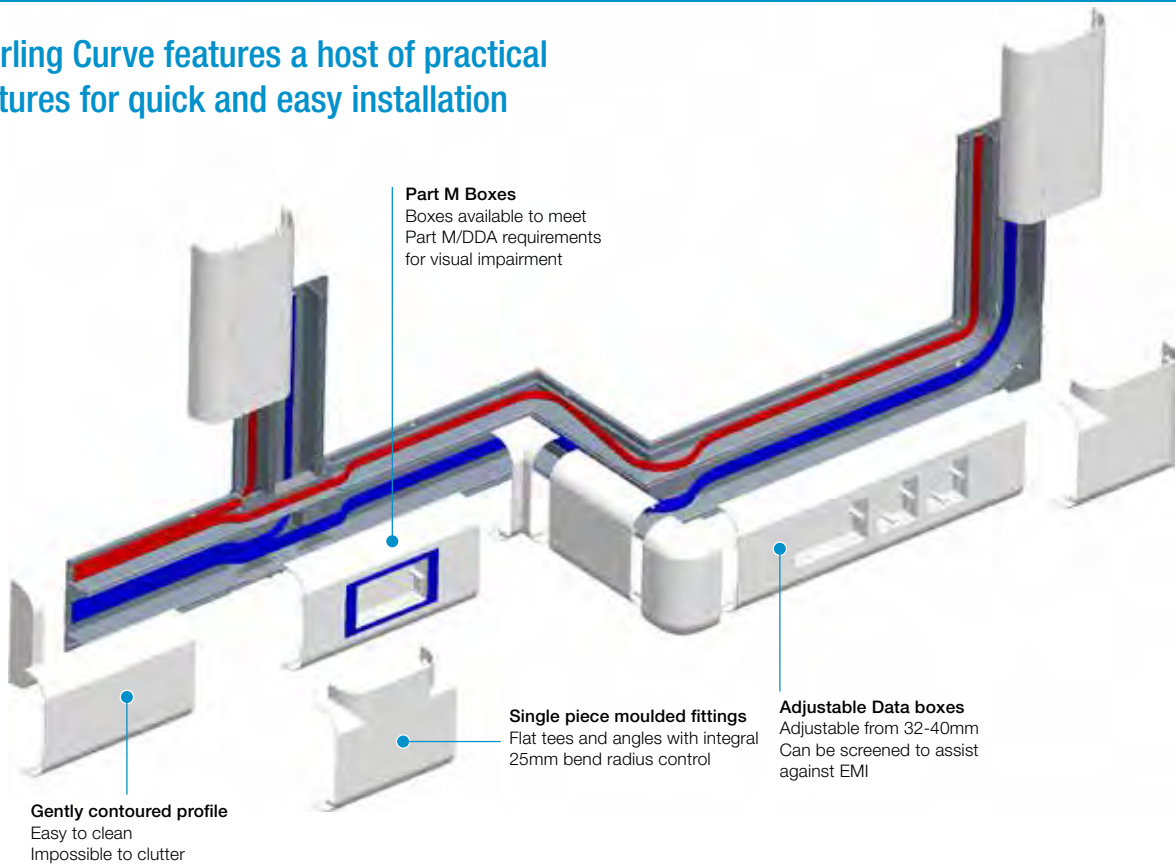
Main crossover bridge
 code pack
EMCB1 5



Angled cable retainer
 code pack
EACR1 10

Sterling Curve Trunking

Sterling Curve features a host of practical features for quick and easy installation



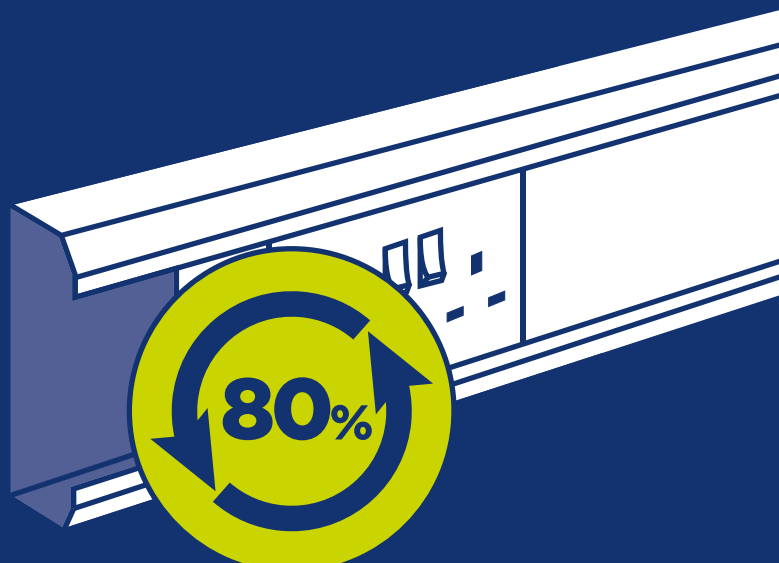
Part M Boxes
Boxes available to meet Part M/DDA requirements for visual impairment

Single piece moulded fittings
Flat tees and angles with integral 25mm bend radius control

Adjustable Data boxes
Adjustable from 32-40mm
Can be screened to assist against EMI

Gently contoured profile
Easy to clean
Impossible to clutter

Our PVC-U products have been
**MANUFACTURED USING
80% RECYCLED MATERIAL.**



**REASSURINGLY
RECYCLED**

Quick reference chart
Sterling Curve

3 compartment

Profile 1
167 x 50mm

Profile 2
167 x 50mm



Base unit

Pack 4 x 3m



ETB1M

ETB1M

Main compartment cover

Pack 8 x 3m



ETL1WH

ETL1WH

Curve cover

Pack 8 x 3m



2 x CETC1WH

CETC1WH

Square cover

Pack 8 x 3m



-

ETSC1WH

Couplers

Pack 2



CECP1MWH

CECP2MWH

End caps

Pack 2



CEECP1MWH

CEECP2MRHWH
CEECP2MLHWH

Internal bend

Pack 2



CEIBP1MWH

CEIBP2MWH

External bends

Pack 2



CExBP1MWH

CExBP2MWH

Flat angle cover

Pack 1



CEFA1MWH

-

Flat angle complete

Pack 1



CEFA1MBWH

-

Flat angle up cover

Pack 1



-

CEFA2UMWH

Flat angle up complete

Pack 1



-

CEFA2UMBWH

Flat tee cover

Pack 1



CEFT1MWH

CEFT2MWH

Flat tee complete

Pack 1



CEFT1MBWH

CEFT2MBWH






Sterling Curve Bio

Sterling Curve Profile 1 trunking is available as standard with Bio antimicrobial protection within the PVC-U material.

Sterling Curve Bio trunking component chart

Main compartment cover	Curve cover	Coupler	End cap	Internal bend	External bend	Flat angle complete	Flat tee complete	1 gang	2 gang	
								accessory box	accessory box	
 Sterling Curve Profile 1 167 x 50mm	ETL1BIOWH	CETC1BIOWH	CECP1MBIOWH	CEEC1MBIOWH	CEIBP1MBIOWH	CXBP1MBIOWH	CEFA1MBBIOWH	CEFT1MBBIOWH	ESSB1BIOWH	ESSB2BIOWH
	Pack 8 x 3m	Pack 8 x 3m	Pack 2	Pack 2	Pack 2	Pack 2	Pack 1	Pack 1	Pack 20	Pack 10

PVC-U PERIMETER TRUNKING SYSTEMS

City College Plymouth in Devon

Sterling Curve Profile 1

Sterling Curve has been fitted throughout a new £13 million building at City College Plymouth in Devon.

Sterling Curve Profile 1 has been used as a dado trunking system to supply data to all teaching areas in this state-of-the-art facility, and contributes to the high spec finish. The Cat 7a compliant trunking is part of the popular and proven Sterling range. It is easy and cost effective to install and incorporates a 25mm bend radius that allows it to easily tackle corners.

“We used around 800m of white Sterling Curve in the build and it is a great product. I would use this system again based on the fact that it is good quality and easy to install when compared to its peers. In terms of value it also stood up on price.” Dan Rendell, Totus Engineering



“We have previously used Marshall-Tufflex products and found them to be of excellent quality. The STEM Centre is a wonderful building and we are really pleased with the finish.”

Martin Sings, City College Plymouth

ODYSSEY

Odyssey is a three-compartment trunking system with a completely curved front profile designed with tamper-resistant covers and fittings and flush accessories to enhance the finished appearance. Odyssey's curved profile is easy to clean and prohibits surface clutter.

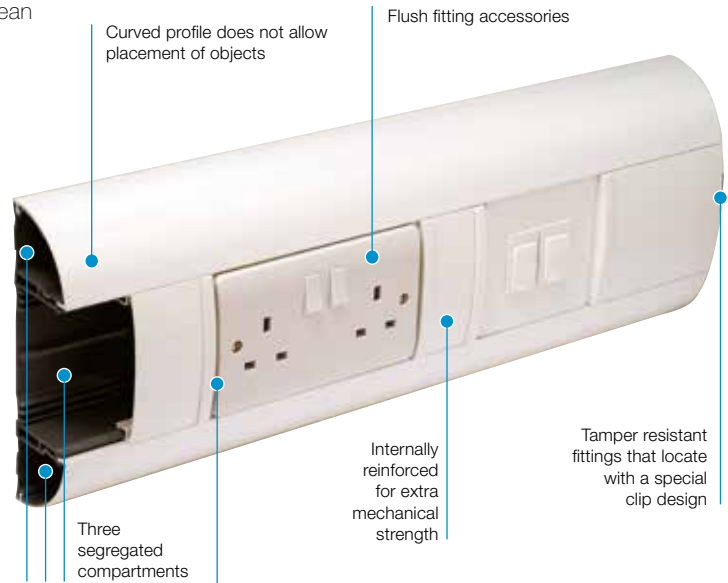


Product information

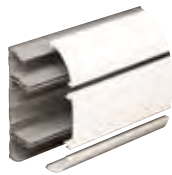
- 180 x 57mm
- 1 main compartment and 2 smaller outer compartments
- Can be subdivided by using EDF1 dividing fillet
- Suitable for dado application
- Available in antimicrobial Bio option (see page 85)
- Flush fitting accessories
- Tamper resistant covers and fittings
- Self extinguishing and non-flame propagating PVC-U
- Fire clips available to secure cables within trunking and prevent premature collapse in the event of a fire

Data information

- Compliant up to Cat 7a
- Standard bend radius 25mm
- Data fittings available for bend radius up to 65mm
- Steel screening divider available to BS EN 50714-2
- Adjustable data box 32-40mm
- Screened data boxes



Trunking profile



Trunking assembly (base and 3 covers)

code	size	pack
DD1WH	180 x 57mm	1 x 3m

Standard Colour
WH
WH: White

Part M

The Odyssey range includes unique coloured accessory boxes that meet the requirements of Part M (DDA) please refer to page 6.



REASSURINGLY RECYCLED
 OUR ODYSSEY TRUNKING BUILT UP PROFILE IS MANUFACTURED USING 63% RECYCLED MATERIAL.

Fittings (ABS)



Coupler

code	pack
DD1210WH	1



End cap

code	pack
DD1230WH	2



Internal bend

code	pack
DD1310WH	1



Internal bend adjustable

code	adjustable	pack
DD1330WH	85-95°	1



External bend

code	pack
DD1350WH	1



External bend adjustable

code	adjustable	pack
DD1370WH	85 - 95°	1



Flat angle up/down

code	pack
DD1410WH	1



Flat tee 3 part assembly - up/down

code	pack
DD1430WH	1

PVC-U PERIMETER TRUNKING SYSTEMS

Fittings



MMT2 adaptor (ABS)

code	size	pack
DD1740WH	MMT2	1

Fabricated using PVC-U and ABS

***Box adaptors**

When installing adjustable boxes DD1540 and DD1550, a DD1590 adaptor should be used at either end of the box.

Where two or more adjustable boxes are being used in line, the spacer included is for use between boxes and a DD1590 adaptor is used at either end.

Boxes



RCD housing

code	pack
DD1580MWH	1

Up to 4 modules can be accommodated

Note: RCDs are not supplied by Marshall-Tufflex



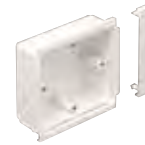
1 gang accessory box (ABS)

code	depth	pack
DD1510WH	30mm	20



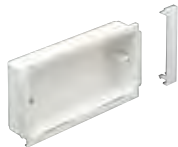
2 gang accessory box (ABS)

code	depth	pack
DD1520WH	30mm	10



***1 gang adjustable depth box (ABS)**

code	depth	pack
*DD1540WH	32 – 40mm	10



***2 gang adjustable depth box (ABS)**

code	depth	pack
*DD1550WH	32 – 40mm	10



Accessory box adaptor (ABS)

code	pack
DD1590WH	1 pair

Each pack contains 2 adaptors



1 gang power and data mounting frame

code	pack
DD1560WH	2



2 gang power and data mounting frame

code	pack
DD1570WH	2

Part M

For boxes that meet the requirements of Part M (DDA) please refer to page 6

Firefly clips



NEW

Fire clip Odyssey centre compartment

code	pack
FC0C	50



NEW

Fire clip Odyssey outer compartment

code	pack
FC00	100

Screening



Steel screening divider

code	pack
DD1730	1 x 1.5m

Note: optional steel screening divider to assist in compliance with BS EN 50174-2



Steel screening divider bonding clip

code	pack
ESF3	5



Bonding strap

code	pack
DD1711	5



1 gang screened accessory box

code	pack
DD1511WH	1

Screening



2 gang screened accessory box

code	pack
DD1521WH	1

Screening

Conductive spray (CS) is unique to Marshall-Tufflex and is applied in the factory to assist in screening from electromagnetic interference to data and communications cabling within trunking systems. The coating is applied to a range of data boxes, covers, clip-on components and fabricated fittings.

WARNING: A CS coating is not suitable for low voltage circuits. As per the current version of BS 7671 wiring regulations. For data/voice use only.

Odyssey Bio



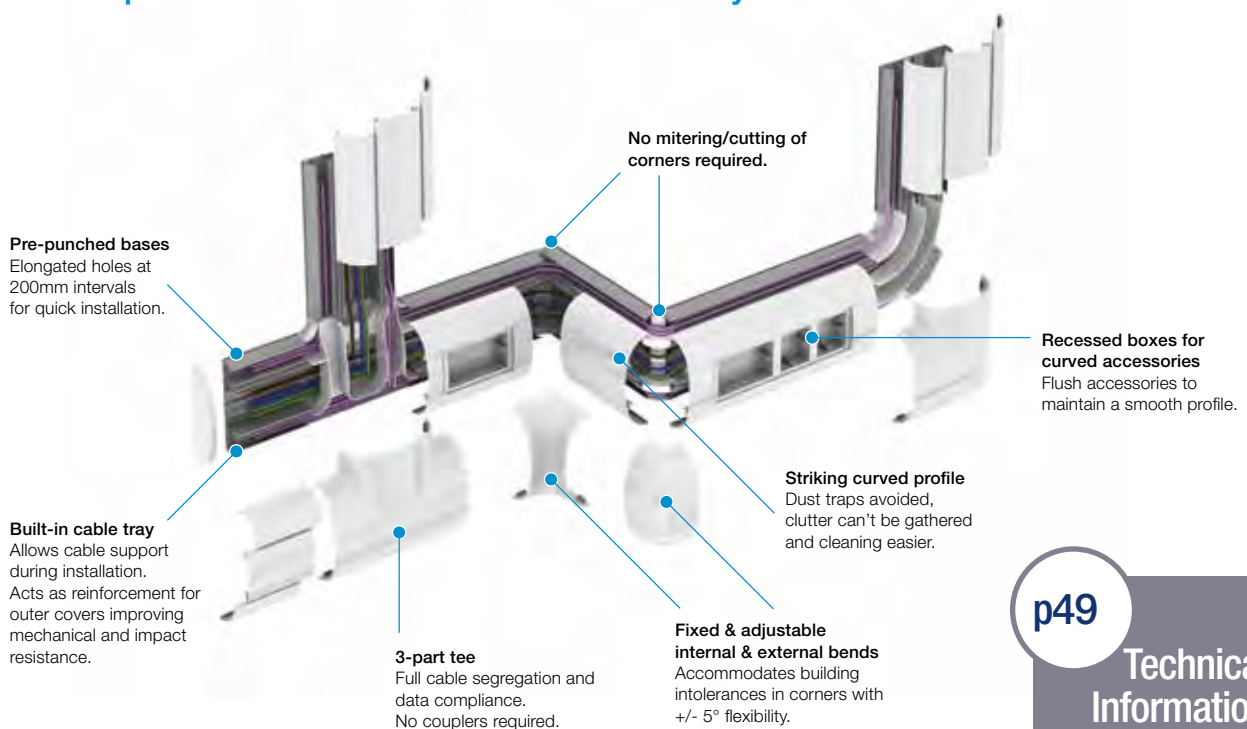
Odyssey is available as part of our standard range with Bio antimicrobial protection within the PVC-U material.

Odyssey Bio trunking component chart

Trunking assembly	Coupler	End cap	Internal bend	External bend	Flat angle (up or down)	Flat tee (up or down)	1 gang accessory box	2 gang accessory box	1 gang Bio power and data mounting frame	2 gang Bio power and data mounting frame
Odyssey trunking 180 x 57mm	DD1213WH Pack 1	DD1233WH Pack 2	DD1313WH Pack 1	DD1353WH Pack 1	DD1413WH Pack 1	DD1433WH Pack 1	DD1513WH Pack 20	DD1523WH Pack 10	DD1561WH Pack 2	DD1571WH Pack 2

Odyssey Trunking

Odyssey can enhance the look of a project as well as providing all of the practical features that ensure fast and easy installation.



p49
Technical Information

PVC-U PERIMETER TRUNKING SYSTEMS

TWIN PLUS TRUNKING

Twin Plus is a large, segregated, two-compartment skirting and dado trunking system that provides high capacity cable containment for most commercial environments.

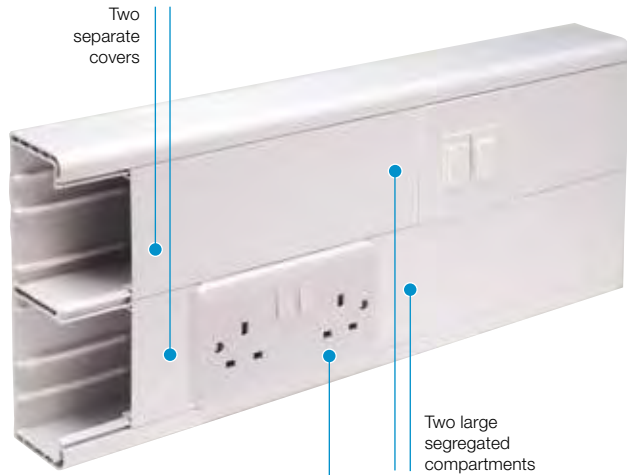


Product information

- 210 x 57mm
- 2 large segregated compartments
- Can be subdivided
- Separate cover access to each compartment
- Suitable for skirting and dado application
- Self extinguishing and non-flame propagating PVC-U
- Fire clips available to secure cables within trunking and prevent premature collapse in the event of a fire

Data information

- Compliant up to Cat 7a
- 50mm bend radius fittings
- Adjustable data box 32-47mm
- Screened data boxes
- Steel screening divider available to BS EN 50714-2



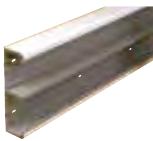
Standard Colour
WH
WH: White

Part M

For box assemblies and spacers that meet the requirements of Part M (DDA) please refer to page 6.

PVC-U PERIMETER TRUNKING SYSTEMS

Basic components



Base unit

code	pack
EMT60WH	2 x 3m



Cover

code	pack
ETL1WH	8 x 3m

REASSURINGLY RECYCLED

OUR TWIN PLUS TRUNKING BUILT UP PROFILE IS MANUFACTURED USING 69% RECYCLED MATERIAL.

Fittings (ABS)



Coupler

code	pack
EC60WH	1



End cap

code	pack
EEC60WH	1

For additional retention use end cap retaining screws G1310 (Pack 40)



Internal bend assembly

code	pack
EIB60WH	1



External bend assembly – standard

code	pack
ESXB60WH	1

Capacity reduced by 50%

p49

Technical Information

Fittings (ABS)



External bend assembly – large

code	pack
EXB60WH	1



Flat angle assembly

code	pack
EFA60WH	1



Flat tee assembly

code	pack
EFT60WH	1



Note: 135° versions are also available. For more information call the Technical Team on +44 (0)1424 856688

Components



Dividing fillet – PVC-U

code	pack
LDF1	8 x 3m

Firefly clips



Fire clip Twin Plus

code	pack
FCTP	10

Boxes and plates



***RCD/MCD housing**

code	pack
EAHC1MWH	1

*Up to 4 modules can be accommodated

Note: RCDs are not supplied by Marshall-Tufflex



1 gang accessory box

code	depth	pack
ESSB1WH	30mm	20



2 gang accessory box

code	depth	pack
ESSB2WH	30mm	10



Accessory box spacer

code	size	pack
ES1WH	14mm	4

For use between accessory boxes



1 gang adjustable depth box

code	depth	pack
EAB1WH	32 – 47mm	10



2 gang adjustable depth box

code	depth	pack
EAB2WH	32 – 47mm	5



1 gang accessory plate

code	pack
ESSP1WH	2



2 gang accessory plate

code	pack
ESSP2WH	2

Part M

For assemblies and spacers that meet the requirements of Part M (DDA) please refer to page 6.





Steel screening divider

code	pack
ESF60	1 x 1.5m

Note: optional steel screening divider to assist in compliance with BS EN 50174-2



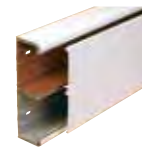
Steel screening divider bonding strap

code	depth	pack
ESF2	5	5



Bonding strap

code	pack
ESBS1	5



Screened base unit (comp 1 or 2)

code	pack
EMT60CS1WH	1 x 3m

Note: Can be used to screen top or bottom compartment (Lids supplied separately)



Screened Main compartment cover

code	pack
ETL1CSWH	1 x 3m



1 gang screened accessory box

code	depth	pack
ESSB1SWH	30mm	20



2 gang screened accessory box

code	depth	pack
ESSB2SWH	30mm	10

Screening

Conductive spray (CS) is unique to Marshall-Tufflex and is applied in the factory to assist in screening from electromagnetic interference to data and communications cabling within trunking systems. The coating is applied to a range of data boxes, covers, clip-on components and fabricated fittings.

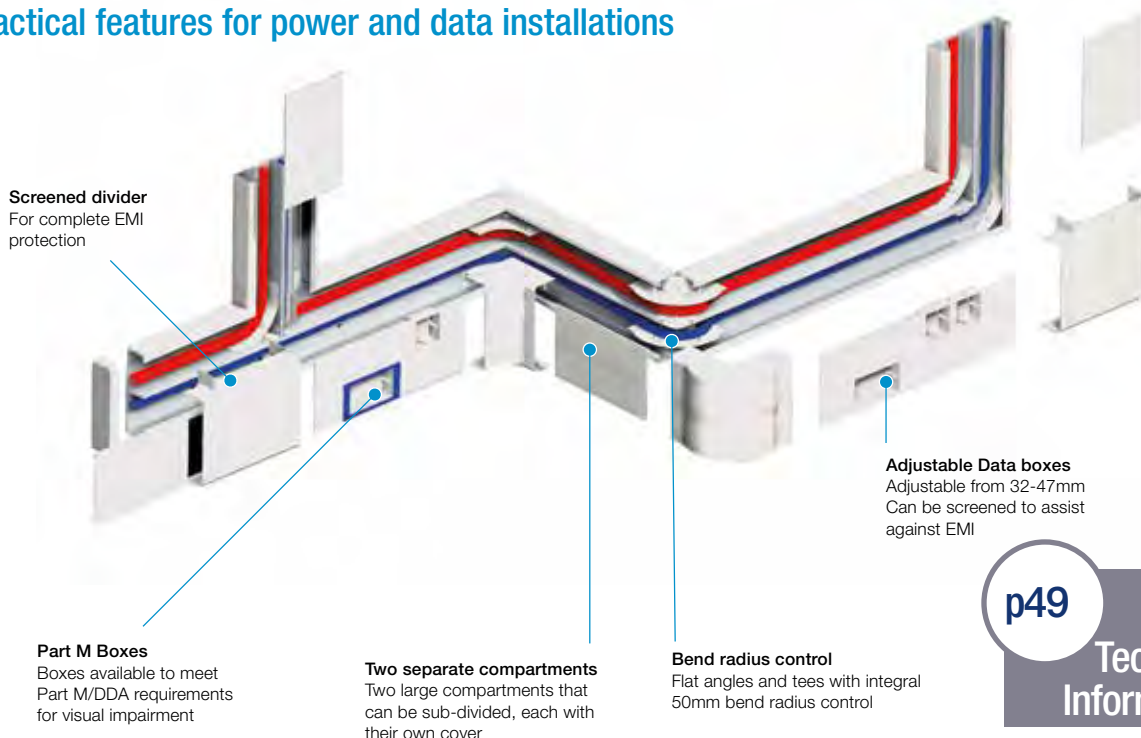
WARNING: A CS coating is not suitable for low voltage circuits. As per the current version of BS 7671 wiring regulations. For data/voice use only.

Screened compartments key to coding

CS1 = screening in compartment 1

Twin Plus

Twin Plus is a high cable capacity trunking system with a variety of practical features for power and data installations



p49

Technical Information

XL TRUNKING 201 AND 202



'Bio option' available to special order

XL Trunking 201 and 202 are deep, large capacity 3 compartment, segregated containment systems.

Product information

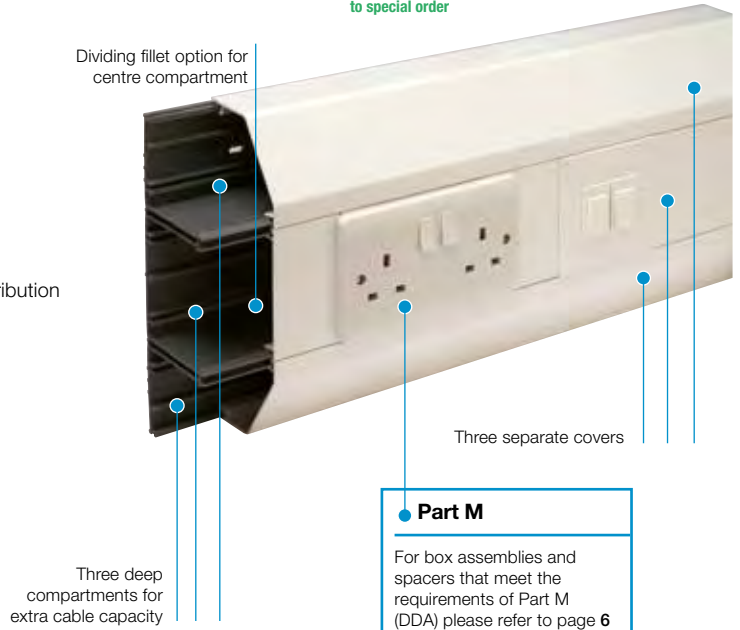
- 220 x 65mm
- 1 full and 2 half size compartments
- XL201 for dado installation only
- 3 deep segregated compartments
- Can be subdivided
- Suitable for dado and skirting application
- Can be fed from larger trunking systems for increased cable distribution
- Boxes available to comply with Part M (DDA)
- Comprehensive range of flush power and data accessories
- Self extinguishing and non-flame propagating PVC-U

Data information

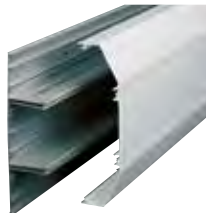
- Compliant up to Cat 7a*
- Adjustable data box 32-47mm
- Screened data boxes
- Steel screening divider available to BS EN 50714-2

See page 44 for quick reference chart

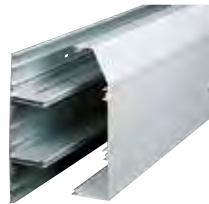
Standard Colour
WH
WH: White



Trunking profiles



XL201
size 220 x 65mm



XL202
size 220 x 65mm

REASSURINGLY RECYCLED

OUR XL BUILT UP PROFILES ARE MANUFACTURED USING THE FOLLOWING PERCENTAGES OF RECYCLED MATERIAL.

XL201 70%
XL202 71%

***Data fittings**

For made to order fittings to meet Cat 7a requirements please contact our Technical Team on +44 (0)1424 856688

Basic components



Base unit
code ELTB200 pack 4 x 3m



Main compartment cover
code ETL1WH pack 8 x 3m



Angled cover
code ELAC200WH pack 8 x 3m



Square cover
code ELSC200WH pack 8 x 3m

p49
Technical Information

PVC-U PERIMETER TRUNKING SYSTEMS

XL201 fittings



XL201 Coupler	
code	pack
EC201WH	5



XL201 End cap	
code	pack
EEC201WH	5
Universal for both LH & RH	



XL201 Internal bend	
code	pack
EIB201WH	5



XL201 External bend	
code	pack
EXB201WH	5



XL201 Flat angle	
code	pack
EFA201WH	1



XL201 Flat tee	
code	pack
EFT201WH	1

XL202 fittings



XL202 Coupler	
code	pack
EC202WH	5



XL202 End cap	
code	pack
EEC202LHWH (Left hand)	5
EEC202RHWH (Right hand)	5



XL202 Internal bend	
code	pack
EIB202WH	5



XL202 External bend	
code	pack
EXB202WH	5



XL202 Flat angle - upward	
code	pack
EFA202UWH	1



XL202 Flat angle - downward	
code	pack
EFA202DWH	1

Components



Dividing fillet	
code	pack
ELDF200	8 x 3m



Steel screening divider	
code	pack
ESF200	1 x 1.5m

Note: optional steel screening divider to assist in compliance with BS EN 50174-2



Steel screening divider bonding strap	
code	pack
ESF2	5



Bonding strap	
code	pack
ESBS1	5

Boxes and plates



*RCD/MCB Housing	
code	pack
EAHC1MWH	1

*Up to 4 modules can be accommodated
Note: RCDs are not supplied by Marshall-Tufflex



1 gang accessory box		
code	depth	pack
ESSB1WH	30mm	20



2 gang accessory box		
code	depth	pack
ESSB2WH	30mm	10

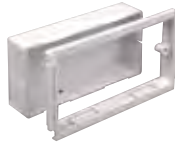


Accessory box spacer		
code	size	pack
ES1WH	14mm	4

For use between accessory boxes



1 gang adjustable depth box		
code	depth	pack
EAB1WH	32 – 47mm	10



2 gang adjustable depth box		
code	depth	pack
EAB2WH	32 – 47mm	5



1 gang accessory plate	
code	pack
ESSP1WH	2



2 gang accessory plate	
code	pack
ESSP2WH	2

Part M

For box assemblies and spacers that meet the requirements of Part M (DDA) please refer to page 6



Quick reference chart XL Trunking 201 and 202

3 Compartment

XL201	XL202
220 x 65mm	220 x 65mm



Base unit

Pack 4 x 3m



ELTB200

ELTB200

Main compartment cover

Pack 8 x 3m



ETL1WH

ETL1WH

Angled cover

Pack 8 x 3m



2 x ELAC200WH

ELAC200WH

Square cover

Pack 8 x 3m



-

ELSC200WH

Couplers

Pack 5



EC201WH

EC202WH

End caps

Pack 5



EEC201WH

EEC202LHWH
EEC202RHWH

Internal bends

Pack 5



EIB201WH

EIB202WH

External bends

Pack 5



EXB201WH

EXB202WH

Flat angles

Pack 1



EFA201WH

EFA202UWH
EFA202DWH

Flat tees

Pack 1



EFT201WH

†

† XL202 trunking flat tees

Where profiles have one angled cover and one square cover, as with XL202, it is possible to create a tee by changing the top or bottom cover so that covers to match the profile of the trunking. For example:

- Upward tee – select XL201 tee remove the angled bottom cover and replace with square cover.

XL TRUNKING 211 AND 212

XL Trunking sizes 211 and 212 are deep, large capacity, 4-compartment, segregated containment systems with facilities for adding further full-size segregated compartments.



'Bio option' available to special order

Product information

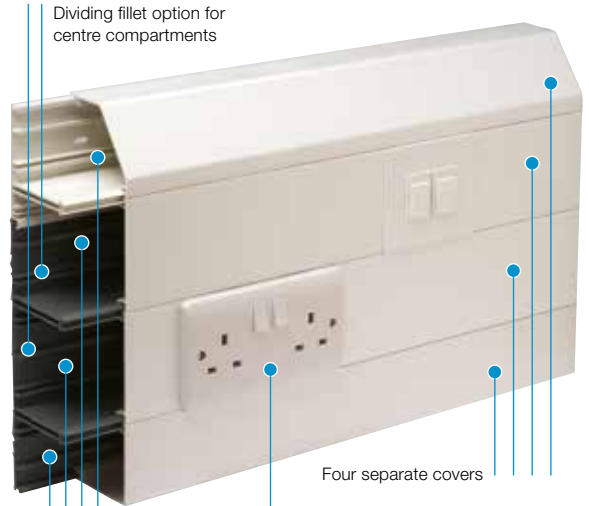
- 308 x 65mm
- 2 full and 2 half size compartments
- Can be subdivided
- Suitable for dado and skirting application
- Can be fed from larger trunking systems for increased cable distribution
- Boxes available to comply with Part M (DDA)
- Comprehensive range of flush power and data accessories
- Self extinguishing and non-flame propagating PVC-U

Data information

- Compliant up to Cat 7a*
- Adjustable data box 32-47mm
- Screened data boxes
- Steel screening divider available to BS EN 50714-2

See page 48 for quick reference chart

Standard Colour
WH
WH: White



Part M

For box assemblies and spacers that meet the requirements of Part M (DDA) please refer to page 6

***Data fittings**

For made to order fittings to meet Cat 7a requirements please contact our Technical Team on +44 (0)1424 856688

REASSURINGLY RECYCLED

OUR XL 211 AND 212 TRUNKING BUILT UP PROFILES ARE MANUFACTURED USING 73% RECYCLED MATERIAL.

Trunking profiles

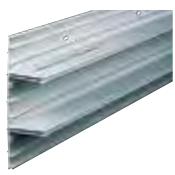


XL211
size 308 x 65mm



XL212
size 308 x 65mm

Basic components



Base unit
code ELTB200 pack 4 x 3m



Extendable base
code ELEB200 pack 4 x 3m



Main compartment cover
code ETL1WH pack 8 x 3m



Angled cover
code ELAC200WH pack 8 x 3m



Square cover
code ELSC200WH pack 8 x 3m

p49 Technical Information

PVC-U PERIMETER TRUNKING SYSTEMS

XL211 fittings



XL211 Coupler	
code	pack
EC211WH	5



XL211 End cap	
code	pack
EEC211WH	5

Universal for both LH & RH



XL211 Internal bend	
code	pack
EIB211WH	5



XL211 External bend	
code	pack
EXB211WH	5



XL211 Flat angle	
code	pack
EFA211WH	1



XL211 Flat tee	
code	pack
EFT211WH	1



XL212 Coupler	
code	pack
EC212WH	5



XL212 End cap	
code	pack
EEC212LHWH (Left hand)	5
EEC212RHWH (Right hand)	5



XL212 Internal bend	
code	pack
EIB212WH	5



XL212 External bend	
code	pack
EXB212WH	5



XL212 Flat angle – upward	
code	pack
EFA212UWH	1



XL212 Flat angle – downward	
code	pack
EFA212DWH	1

† XL212 trunking flat tees

Where profiles have one angled cover and one square cover, as with XL212, it is possible to create a tee by changing the top or bottom cover to match the profile of the trunking.

For example:

- Upward tee – select XL211 tee remove the angled bottom cover and replace with square cover.

Fittings



Dividing fillet

code	pack
ELDF200	8 x 3m



Steel screening divider

code	pack
ESF200	1 x 1.5m

Note: optional steel screening divider to assist in compliance with BS EN 50174-2



Steel screening divider bonding strap

code	pack
ESF2	5



Bonding strap

code	pack
ESBS1	5

Boxes and plates



***RCD/MCB Housing**

code	pack
EAHC1MWH	1

*Up to 4 modules can be accommodated
Note: RCDs are not supplied by Marshall-Tufflex



1 gang accessory box

code	depth	pack
ESSB1WH	30mm	20



2 gang accessory box

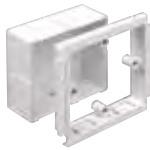
code	depth	pack
ESSB2WH	30mm	10



Accessory box spacer

code	size	pack
ES1WH	14mm	4

For use between accessory boxes



1 gang adjustable depth box

code	depth	pack
EAB1WH	32 – 47mm	10



2 gang adjustable depth box

code	depth	pack
EAB2WH	32 – 47mm	5



1 gang accessory plate

code	pack
ESSP1WH	2



2 gang accessory plate

code	pack
ESSP2WH	2

Part M

For box assemblies and spacers that meet the requirements of Part M (DDA) please refer to page 6.



Quick reference chart

XL 211 to 212

4 Compartment

XL211

308 x 65mm

XL212

308 x 65mm



Base unit

Pack 4 x 3m



ELTB200

ELTB200

Extendable base

Pack 4 x 3m



ELEB200

ELEB200

Main compartment cover

Pack 8 x 3m



2 x ETL1WH

2 x ETL1WH

Angled cover

Pack 8 x 3m



2 x ELAC200WH

ELAC200WH

Square cover

Pack 8 x 3m



-

ELSC200WH

Couplers

Pack 5



EC211WH

EC212WH

End caps

Pack 5



EEC211WH

EEC212LHWH
EEC212RHWH

Internal bends

Pack 5



EIB211WH

EIB212WH

External bends

Pack 5



EXB211WH

EXB212WH

Flat angles

Pack 1



EFA211WH

EFA212UWH
EFA212DWH

Flat tees

Pack 1



EFT211WH

†

† Please refer to Flat Angle and Flat Tee information

Larger systems

Additional 88mm compartments can be added for larger capacity installations. For further information about larger systems please call our Technical Team on +44 (0)1424 856688.

† XL212 trunking flat tees

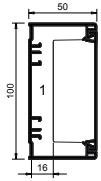
Where profiles have one angled cover and one square cover, as with XL212, it is possible to create a tee by changing the top or bottom cover to match the profile of the trunking.

For example:

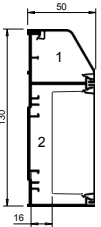
- Upward tee – select XL211 tee remove the angled bottom cover and replace with square cover.

PVC-U perimeter trunking capacity guide

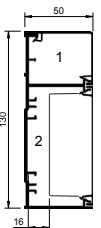
Trunking height up to 150mm



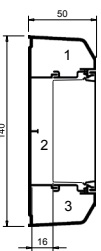
MONO 10 – no box
 1 = 4141mm² total area
 1 = 1863mm² 45% space factor
With box in comp 1
 1 = 1874mm² total area
 1 = 843mm² 45% space factor
Internal dimensions
 Compartment 1 = 96 x 46mm



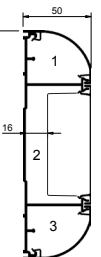
COMPACT 1 – no box
 1 = 1280mm² total area
 1 = 576mm² 45% space factor
 2 = 3763mm² total area
 2 = 1693mm² 45% space factor
With box in comp 2
 2 = 1497mm² total area
 2 = 673mm² 45% space factor
Internal dimensions
 Compartment 1 = 36 x 45mm
 Compartment 2 = 87 x 46mm



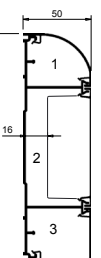
COMPACT 2 no box
 1 = 1534mm² total area
 1 = 690mm² 45% space factor
 2 = 3763mm² total area
 2 = 1693mm² 45% space factor
With box in comp 2
 2 = 1497mm² total area
 2 = 673mm² 45% space factor
Internal dimensions
 Compartment 1 = 36 x 45mm
 Compartment 2 = 87 x 46mm



MONO PLUS 20 – no box
 1 & 3 = 1024mm² total area
 1 & 3 = 461mm² 45% space factor
 2 = 3451mm² total area
 2 = 1553mm² 45% space factor
With box in comp 2
 2 = 1185mm² total area
 2 = 533mm² 45% total area
Internal dimensions
 Compartment 1 = 27 x 45mm
 Compartment 2 = 77 x 46mm
 Compartment 3 = 27 x 45mm

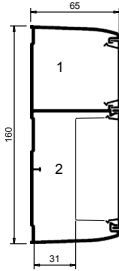


STERLING CURVE PROFILE 1 – no box
 1 & 3 = 1170mm² total area
 1 & 3 = 527mm² 45% space factor
 2 = 3858mm² total area
 2 = 1736mm² 45% space factor
With box in comp 2
 2 = 1376mm² total area
 2 = 619mm² 45% total area
Internal dimensions
 Compartment 1 = 39 x 45mm
 Compartment 2 = 86 x 46mm
 Compartment 3 = 39 x 45mm

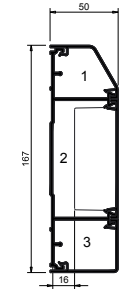


STERLING CURVE PROFILE 2 – no box
 1 = 1170mm² total area
 1 = 527mm² 45% space factor
 2 = 3858mm² total area
 2 = 1736mm² 45% space factor
 3 = 1542mm² total area
 3 = 694mm² 45% space factor
With box in comp 2
 2 = 1376mm² total area
 2 = 619mm² 45% space factor
Internal dimensions
 Compartment 1 = 39 x 45mm
 Compartment 2 = 86 x 46mm
 Compartment 3 = 39 x 45mm

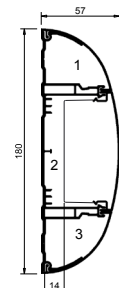
Trunking height from 150mm to 200mm



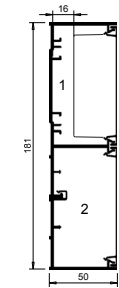
TWIN165 – no box
 1 = 3272mm² total area
 1 = 1472mm² 45% space factor
 2 = 5404mm² total area
 2 = 2431mm² 45% space factor
With box in comp 2
 2 = 3100mm² total area
 2 = 1395mm² 45% space factor
Internal dimensions
 Compartment 1 = 58 x 61mm
 Compartment 2 = 94 x 61mm



STERLING PROFILE 2 – no box
 1 = 1266mm² total area
 1 = 570mm² 45% space factor
 2 = 3858mm² total area
 2 = 1736mm² 45% space factor
 3 = 1542mm² total area
 3 = 694mm² 45% space factor
With box in comp 2
 2 = 1376mm² total area
 2 = 619mm² 45% space factor
Internal dimensions
 Compartment 1 = 39 x 45mm
 Compartment 2 = 86 x 46mm
 Compartment 3 = 39 x 45mm

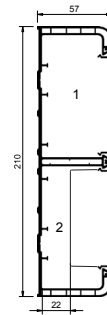


ODYSSEY – no box
 1 & 3 = 1256mm² total area
 1 & 3 = 565mm² 45% space factor
 2 = 4022mm² 45% total area
 2 = 1810mm² 45% space factor
With box in comp 2
 2 = 1230mm² total area
 2 = 554mm² 45% space factor
Internal dimensions
 Compartment 1 = 36 x 46mm
 Compartment 2 = 81 x 48mm
 Compartment 3 = 36 x 46mm

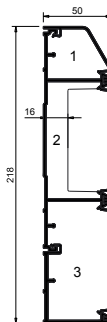


COMPACT 3 – no box
 1 = 3763mm² total area
 1 = 1693mm² 45% space factor
 2 = 3700mm² total area
 2 = 1665mm² 45% space factor
With box in comps 1 and 2
 1 = 1503mm² total area
 1 = 676mm² 45% space factor
 2 = 1440mm² total area
 2 = 648mm² 45% space factor
Internal dimensions
 Compartment 1 = 87 x 45mm
 Compartment 2 = 87 x 46mm

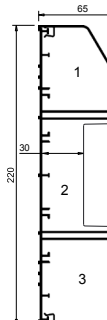
Trunking height over 200mm



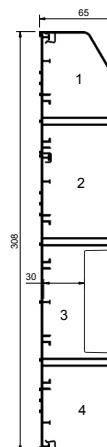
TWIN PLUS – no box
 1 & 2 = 4755mm² total area
 1 & 2 = 2140mm² 45% space factor
With box in comps 1 or 2
 1 & 2 = 2431mm² total area
 1 & 2 = 1094mm² 45% space factor
Internal dimensions
 Compartment 1 = 95 x 52mm
 Compartment 2 = 95 x 52mm



STERLING PROFILE 4 – no box
 1 = 1266mm² total area
 1 = 570mm² 45% space factor
 2 = 3858mm² total area
 2 = 1736mm² 45% space factor
 3 = 3858mm² total area
 3 = 1736mm² 45% space factor
With box in comp 2 or 3
 2 = 1376mm² total area
 2 = 619mm² 45% space factor
 3 = 1234mm² total area
 3 = 555mm² 45% space factor
Internal dimensions
 Compartment 1 = 39 x 45mm
 Compartment 2 = 86 x 46mm
 Compartment 3 = 86 x 46mm



XL202 – no box
 1 = 2824mm² total area
 1 = 1271mm² 45% space factor
 2 = 4771mm² total area
 2 = 2147mm² 45% space factor
 3 = 3531mm² total area
 3 = 1589mm² 45% space factor
With box in comp 2
 2 = 2504mm² total area
 2 = 1127mm² 45% space factor
Internal dimensions
 Compartment 1 = 64 x 62mm
 Compartment 2 = 84 x 62mm
 Compartment 3 = 64 x 62mm



XL212 – no box
 1 = 2824mm² total area
 1 = 1271mm² 45% space factor
 2 = 4771mm² total area
 2 = 2147mm² 45% space factor
 3 = 4732mm² total area
 3 = 2130mm² 45% space factor
 4 = 3531mm² total area
 4 = 1589mm² 45% space factor
With box in comps 2 or 3
 2 = 2511mm² total area
 2 = 1130mm² 45% space factor
 3 = 2466mm² total area
 3 = 1109mm² 45% space factor
Internal dimensions
 Compartment 1 = 61 x 61mm
 Compartment 2 = 87 x 61mm
 Compartment 3 = 87 x 61mm
 Compartment 4 = 61 x 61mm

Conductor type	Size	Cable factor
Stranded PVC power	1.5mm ²	8.6
Stranded PVC power	2.5mm ²	12.6
Stranded PVC power	4.0mm ²	16.6

For Data cable information, please see page 242

Other Sterling Profile dimensions

Other Sterling Profiles are a combination of the ones shown on this page and can be calculated using the compartment dimensions shown here.

Mono 10 and Mono Plus 20 trunking – PVC-U

Material

PVC-U is flame retardant and self-extinguishing. It is a 100% recyclable material.

Our PVC-U products are manufactured from an average of 80% recycled plastic, with some extruded products produced from 100% recycled material. The index at the back of the catalogue details the recycled content by individual product.

Positioning

- **Mono 10**
For dado application only.
- **Mono Plus 20**
If used for skirting applications, a clearance of 10mm is recommended above the floor covering to maintain IP4X rating.

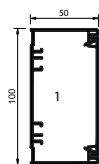
Screening

Please contact our Technical Team on +44 (0)1424 856688.

Antimicrobial

For technical details of antimicrobial Mono Plus 20 Bio trunking, please refer to Laboratory and Healthcare section.

Dimensions

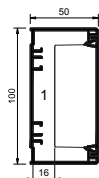


Mono 10 trunking – no box

Compartment 1 total area = 4141mm²

Internal dimensions

Compartment 1 = 96 x 46mm

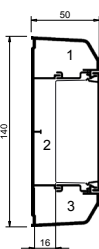


Mono 10 trunking – with box

Compartment 1 total area = 1874mm²

Internal dimensions

Compartment 1 = 96 x 46mm



Mono Plus 20 trunking – with box

Compartment 1 total area = 1024mm²

Compartment 2 total area = 1185mm²

Compartment 3 total area = 1024mm²

Internal dimensions

Compartment 1 = 27 x 45mm

Compartment 2 = 77 x 46mm

Compartment 3 = 27 x 45mm

Cable capacities

- All calculations allow for a 45% space factor.

As there can be differences between data cable sizes, Marshall-Tufflex recommend that cable dimensions are confirmed with the manufacturing company.

Cable capacity chart	Compartment 1		Compartment 2		Compartment 3	
	No box	With box	No box	With box	No box	With box
PVC power cable 1.5mm² stranded copper						
Mono 10	216	98	–	–	–	–
Mono Plus 20	53	–	180	62	53	–
PVC power cable 2.5mm² stranded copper						
Mono 10	147	66	–	–	–	–
Mono Plus 20	36	–	123	42	36	–
PVC power cable 4.0mm² stranded copper						
Mono 10	112	50	–	–	–	–
Mono Plus 20	27	–	93	32	27	–
Data cable: Ø5.5mm						
Mono 10	78	35	–	–	–	–
Mono Plus 20	19	–	65	22	19	–
Data cable: Ø6.0mm						
Mono 10	65	29	–	–	–	–
Mono Plus 20	16	–	54	18	16	–
Data cable: Ø6.5mm						
Mono 10	56	25	–	–	–	–
Mono Plus 20	13	–	46	16	13	–
Data cable: Ø7.0mm						
Mono 10	48	21	–	–	–	–
Mono Plus 20	11	–	40	13	11	–
Data cable: Ø8.4mm						
Mono 10	33	15	–	–	–	–
Mono Plus 20	8	–	28	9	8	–

Compact trunking

Material

PVC-U is flame retardant and self-extinguishing. Our PVC-U products are manufactured from an average of 80% recycled plastic, with some extruded products produced from 100% recycled material. The index at the back of the catalogue details the recycled content by individual product.

Positioning

Compact 1, 2 and 3 are suitable for dado and skirting. If used for skirting applications, a clearance of 10mm is recommended above the floor covering to maintain IP4X rating.

If Compact 2 is installed close to desk/bench top – invert so small compartment is on bottom.

Screening

Special conductive spray coating can be applied to one compartment, the cover, accessory boxes and fittings, to screen data cables against EMI interference.

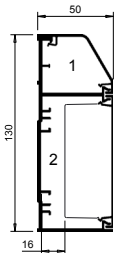
- **For data/voice circuits only:**

Warning: Owing to its relatively high surface resistance, CS coating SHOULD NOT be in contact with low voltage circuits as per the current version of BS 7671 wiring regulations. V.A.C. – 1000 V.A.C. unless additional measures are undertaken.

Antimicrobial

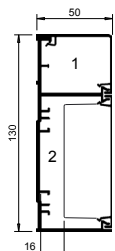
For technical details of antimicrobial Bio Compact trunking, please refer to Laboratory and Healthcare section

Dimensions



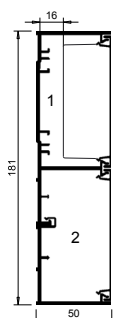
Compact 1 trunking – with box

Compartment 1 total area = 1280mm²
Compartment 2 total area = 1497mm²



Compact 2 trunking – no box

Compartment 1 total area = 1534mm²
Compartment 2 total area = 3763mm²



Compact 3 trunking – no box

Compartment 1 total area = 3763mm²
Compartment 2 total area = 3700mm²

Cable capacities

- All calculations allow for a 45% space factor.

As there can be differences between data cable sizes, Marshall-Tufflex recommend that cable dimensions are confirmed with the manufacturing company.

Cable capacity chart	Compartment 1		Compartment 2	
	No box	With box	No box	With box

PVC power cable 1.5mm² stranded copper

Compact 1	66	–	196	78
Compact 2	80	–	196	78
Compact 3	196	78	193	75

PVC power cable 2.5mm² stranded copper

Compact 1	45	–	134	53
Compact 2	53	–	134	53
Compact 3	134	53	132	75

PVC power cable 4.0mm² stranded copper

Compact 1	34	–	102	40
Compact 2	41	–	102	40
Compact 3	101	40	100	39

Data cable: Ø5.5mm

Compact 1	24	–	71	28
Compact 2	29	–	71	28
Compact 3	71	28	69	27

Data cable: Ø6.0mm

Compact 1	20	–	59	20
Compact 2	24	–	59	20
Compact 3	59	22	58	22

Data cable: Ø6.5mm

Compact 1	17	–	50	20
Compact 2	20	–	50	20
Compact 3	50	17	50	20

Data cable: Ø7.0mm

Compact 1	14	–	43	–
Compact 2	17	–	43	–
Compact 3	43	17	43	16

Data cable: Ø8.4mm

Compact 1	10	–	30	12
Compact 2	12	–	30	12
Compact 3	30	12	30	11

Twin165 trunking

Material

PVC-U is flame retardant and self-extinguishing. It is a 100% recyclable material.

Our PVC-U products are manufactured from an average of 80% recycled plastic, with some extruded products produced from 100% recycled material. The index at the back of the catalogue details the recycled content by individual product.

Positioning

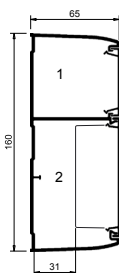
If used for skirting applications, a clearance of 10mm is recommended above the floor covering to maintain IP4X rating.

Screening

Special conductive spray coating can be applied to one compartment, the cover, accessory boxes and fittings, to screen data cables against EMI interference.

- **For data/voice circuits only:**
Warning: Owing to its relatively high surface resistance, CS coating SHOULD NOT be in contact with low voltage circuits as per the current version of BS 7671 wiring regulations. 50 V.A.C. – 1000 V.A.C. unless additional measures are undertaken.
- Part M box assemblies with contrasting coloured faceplates are available to meet the requirements of DDA regulations for Visual Impairment.

Dimensions



Twin165 trunking – no accessory box

Compartment 1 = 3272mm² total area
 Compartment 1 = 1472mm² 45% space factor
 Compartment 2 = 5404mm² total area
 Compartment 2 = 2431mm² 45% space factor

Twin165 trunking – with accessory box

Compartment 1 = 3272mm² total area
 Compartment 1 = 1472mm² 45% space factor
 Compartment 2 = 3100mm² total area
 Compartment 2 = 1395mm² 45% space factor

Cable capacities

- All calculations allow for a 45% space factor.

As there can be differences between data cable sizes, Marshall-Tufflex recommend that cable dimensions are confirmed with the manufacturing company.

Cable capacity chart	Compartment 1		Compartment 2	
	No box	With box	No box	With box
PVC power cable 1.5mm ² stranded copper	171	–	282	162
PVC power cable 2.5mm ² stranded copper	116	–	193	110
PVC power cable 4.0mm ² stranded copper	88	–	146	84
Data cable: Ø5.5mm	61	–	102	58
Data cable: Ø6.0mm	52	–	86	49
Data cable: Ø6.5mm	44	–	73	42
Data cable: Ø7.0mm	38	–	63	36
Data cable: Ø8.4mm	26	–	43	25

Sterling Profile trunking

Material

PVC-U is flame retardant and self-extinguishing. It is a 100% recyclable material.

Our PVC-U products are manufactured from an average of 80% recycled plastic, with some extruded products produced from 100% recycled material. The index at the back of the catalogue details the recycled content by individual product.

Positioning

If used for skirting applications, a clearance of 10mm is recommended above the floor covering to maintain IP4X rating.

Screening

Special conductive spray coating can be applied to one compartment, the cover, accessory boxes and fittings, to screen data cables against EMI interference.

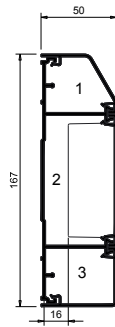
- **For data/voice circuits only:**

Warning: Owing to its relatively high surface resistance, CS coating SHOULD NOT be in contact with low voltage circuits as per the current version of BS 7671 wiring regulations. 50 V.A.C. – 1000 V.A.C. unless additional measures are undertaken.

Antimicrobial

For technical details of antimicrobial Sterling Profile Bio trunking, please refer to Laboratory and Healthcare section.

Dimensions



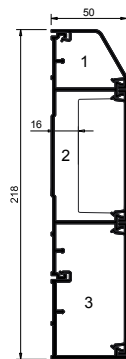
Sterling Profile 2 no box

- 1 = 1266mm² total area
- 1 = 570mm² 45% space factor
- 2 = 3858mm² total area
- 2 = 1736mm² 45% space factor
- 3 = 1542mm² total area
- 3 = 694mm² 45% space factor

With box in comp 2

- 2 = 1376mm² total area
- 2 = 619mm² 45% space factor

Note: The dimensions shown in this drawing can be used to work out dimensions for Sterling Profiles 1 and 3.

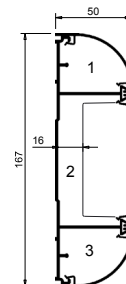


Sterling Profile 4 no box

- 1 = 1266mm² total area
- 1 = 570mm² 45% space factor
- 2 = 3858mm² total area
- 2 = 1736mm² 45% space factor
- 3 = 3716mm² total area
- 3 = 1672mm² 45% space factor

With box in comp 2 or 3

- 2 = 1376mm² total area
- 2 = 619mm² 45% space factor
- 3 = 1234mm² total area
- 3 = 555mm² 45% space factor

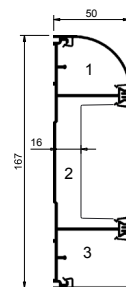


Sterling Curve Profile 1 – no box

- 1 & 3 = 1170mm² total area
- 1 & 3 = 527mm² 45% space factor
- 2 = 3858mm² total area
- 2 = 1736mm² 45% space factor

With box in comp 2

- 2 = 1376mm² total area
- 2 = 619mm² 45% total area



Sterling Curve Profile 2 – no box

- 1 = 1170mm² total area
- 1 = 527mm² 45% space factor
- 2 = 3858mm² total area
- 2 = 1736mm² 45% space factor
- 3 = 1542mm² total area
- 3 = 694mm² 45% space factor

With box in comp 2

- 2 = 1376mm² total area
- 2 = 619mm² 45% space factor

Sterling Profile

Cable capacities

- All calculations allow for a 45% space factor.

As there can be differences between cable sizes, Marshall-Tufflex recommend that cable dimensions are confirmed with the manufacturing company.

Cable capacity chart	Compartment 1		Compartment 2		Compartment 3	
	No box	With box	No box	With box	No box	With box
PVC power cable 1.5mm² stranded copper						
Sterling Profile 1	66	-	201	71	66	-
Sterling Profile 2	66	-	201	71	80	-
Sterling Profile 3	80	-	201	71	80	-
Sterling Profile 4	66	-	201	71	194	69
Sterling Curve Profile 1	61	-	201	71	61	-
Sterling Curve Profile 2	61	-	201	71	80	-
PVC power cable 2.5mm² stranded copper						
Sterling Profile 1	45	-	137	49	45	-
Sterling Profile 2	45	-	137	49	55	-
Sterling Profile 3	55	-	137	49	55	-
Sterling Profile 4	45	-	137	49	132	47
Sterling Curve Profile 1	41	-	137	49	41	-
Sterling Curve Profile 2	41	-	137	49	55	-
PVC power cable 4.0mm² stranded copper						
Sterling Profile 1	34	-	104	37	34	-
Sterling Profile 2	34	-	104	37	41	-
Sterling Profile 3	41	-	104	37	41	-
Sterling Profile 4	34	-	104	37	100	33
Sterling Curve Profile 1	31	-	104	37	31	-
Sterling Curve Profile 2	31	-	104	37	41	-
Data cable: Ø5.5mm²						
Sterling Profile 1	23	-	73	26	23	-
Sterling Profile 2	23	-	73	26	29	-
Sterling Profile 3	29	-	73	26	29	-
Sterling Profile 4	23	-	73	26	70	23
Sterling Curve Profile 1	22	-	73	26	23	-
Sterling Curve Profile 2	22	-	73	26	29	-
Data cable: Ø6.0mm²						
Sterling Profile 1	20	-	61	21	20	-
Sterling Profile 2	20	-	61	21	24	-
Sterling Profile 3	24	-	61	21	24	-
Sterling Profile 4	20	-	61	21	59	20
Sterling Curve Profile 1	18	-	61	21	18	-
Sterling Curve Profile 2	18	-	61	21	24	-
Data cable: Ø6.5mm²						
Sterling Profile 1	17	-	52	18	17	-
Sterling Profile 2	17	-	52	18	20	-
Sterling Profile 3	20	-	52	18	20	-
Sterling Profile 4	17	-	52	18	50	17
Sterling Curve Profile 1	15	-	52	18	15	-
Sterling Curve Profile 2	15	-	52	18	20	-
Data cable: Ø7.0mm²						
Sterling Profile 1	14	-	45	16	14	-
Sterling Profile 2	14	-	45	16	18	-
Sterling Profile 3	18	-	45	16	18	-
Sterling Profile 4	14	-	45	16	43	14
Sterling Curve Profile 1	13	-	45	16	13	-
Sterling Curve Profile 2	13	-	45	16	18	-
Data cable: Ø8.4mm²						
Sterling Profile 1	10	-	31	11	10	-
Sterling Profile 2	10	-	31	11	12	-
Sterling Profile 3	12	-	31	11	12	-
Sterling Profile 4	10	-	31	11	30	10
Sterling Curve Profile 1	9	-	31	11	9	-
Sterling Curve Profile 2	9	-	31	11	12	-

Odyssey trunking

Material

Odyssey accessory boxes and fittings are flame retardant ABS which is 100% recyclable.

Our PVC-U products are manufactured from an average of 80% recycled plastic, with some extruded products produced from 100% recycled material. The index at the back of the catalogue details the recycled content by individual product.

Positioning

For dado, horizontal or vertical installation.

Screening

Special conductive spray coating can be applied to one compartment, the cover, accessory boxes and fittings, to screen data cables against EMI interference.

Please contact our Technical Team on +44 (0)1424 856688.

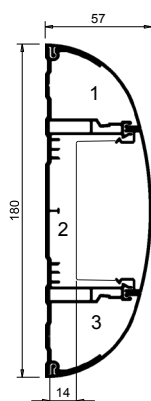
- **For data/voice circuits only:**

Warning: Owing to its relatively high surface resistance, CS coating SHOULD NOT be in contact with low voltage circuits as per the current version of BS 7671 wiring regulations. 50 V.A.C. – 1000 V.A.C. unless additional measures are undertaken.

Antimicrobial

For technical details of antimicrobial Odyssey Bio trunking, please refer to Laboratory and Healthcare section

Dimensions



Odyssey trunking – with box

Compartment 1 & 3 total area = 1278mm²

Compartment 2 total area = 859mm²

Odyssey trunking – no box

Compartment 2 total area = 3972mm²

Cable capacities

- All calculations allow for a 45% space factor.

As there can be differences between data cable sizes, Marshall-Tufflex recommend that cable dimensions are confirmed with the manufacturing company.

Cable capacity chart	Compartment 1		Compartment 2		Compartment 3	
	No box	With box	No box	With box	No box	With box
PVC power cable 1.5mm ² stranded copper	65	–	210	64	65	–
PVC power cable 2.5mm ² stranded copper	44	–	143	43	44	–
PVC power cable 4.0mm ² stranded copper	34	–	109	33	34	–
Data cable: Ø5.5mm	23	–	76	23	23	–
Data cable: Ø6.0mm	19	–	63	19	19	–
Data cable: Ø6.5mm	17	–	54	16	17	–
Data cable: Ø7.0mm	14	–	47	14	14	–
Data cable: Ø8.4mm	10	–	32	10	10	–

Twin Plus trunking

Material

PVC-U is flame retardant and self-extinguishing. It is a 100% recyclable material.

Our PVC-U products are manufactured from an average of 80% recycled plastic, with some extruded products produced from 100% recycled material. The index at the back of the catalogue details the recycled content by individual product.

Positioning

If used for skirting applications, a clearance of 10mm is recommended above the floor covering to maintain IP4X rating.

Screening

Special conductive spray coating can be applied to one compartment, the cover, accessory boxes and fittings, to screen data cables against EMI interference.

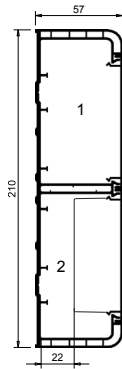
- **For data/voice circuits only:**

Warning: Owing to its relatively high surface resistance, CS coating SHOULD NOT be in contact with low voltage circuits as per the current version of BS 7671 wiring regulations. 50 V.A.C. – 1000 V.A.C. unless additional measures are undertaken.

Antimicrobial

For technical details of antimicrobial Twin Plus Bio trunking, please refer to Laboratory and Healthcare section

Dimensions



Twin Plus trunking – with accessory box

- 1 = 2431mm² total area
- 1 = 1094mm² 45% space factor
- 2 = 2431mm² total area
- 2 = 1094mm² 45% space factor

Twin Plus trunking – no accessory box

- 1 = 4755mm² total area
- 1 = 2139mm² 45% space factor
- 2 = 4755mm² total area
- 2 = 2139mm² 45% space factor

Cable capacities

- All calculations allow for a 45% space factor.

As there can be differences between data cable sizes, Marshall-Tufflex recommend that cable dimensions are confirmed with the manufacturing company.

Cable capacity chart	Compartment 1		Compartment 2	
	No box	With box	No box	With box
PVC power cable 1.5mm ² stranded copper	248	127	248	127
PVC power cable 2.5mm ² stranded copper	169	86	169	86
PVC power cable 4.0mm ² stranded copper	128	65	128	65
Data cable: Ø5.5mm	89	46	89	46
Data cable: Ø6.0mm	75	38	75	38
Data cable: Ø6.5mm	64	32	64	32
Data cable: Ø7.0mm	55	28	55	28
Data cable: Ø8.4mm	38	19	38	19

XL trunking

Material

PVC-U is flame retardant and self-extinguishing. It is a 100% recyclable material.

Our PVC-U products are manufactured from an average of 80% recycled plastic, with some extruded products produced from 100% recycled material. The index at the back of the catalogue details the recycled content by individual product.

Positioning

If used for skirting applications, a clearance of 10mm is recommended above the floor covering to maintain IP4X rating.

Screening

Special conductive spray coating can be applied to one compartment, the cover, accessory boxes and fittings, to screen data cables against EMI interference.

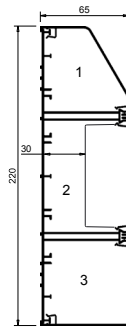
- **For data/voice circuits only:**

Warning: Owing to its relatively high surface resistance, CS coating SHOULD NOT be in contact with low voltage circuits As per the current version of BS 7671 wiring regulations. 50 V.A.C. – 1000 V.A.C. unless additional measures are undertaken.

Antimicrobial

For technical details of antimicrobial XL Bio trunking, please refer to Laboratory and Healthcare section

Dimensions



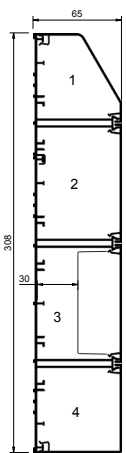
XL202 Trunking – with box

- 1 = 2824mm² total area
- 1 = 1270mm² 45% space factor
- 2 = 2504mm² total area
- 2 = 1126mm² 45% space factor
- 3 = 3531mm² total area
- 3 = 1589mm² 45% space factor

XL202 Trunking – no box

- 2 = 4771mm² total area
- 2 = 2147mm² 45% space factor

Note: The dimensions shown in this drawing can be used to work out dimensions for XL201.



XL212 Trunking – no box

- 1 = 2824mm² total area
- 1 = 1270mm² 45% space factor
- 2 = 4771mm² total area
- 2 = 2147mm² 45% space factor
- 3 = 4732mm² total area
- 3 = 2129mm² 45% space factor
- 4 = 3531mm² total area
- 4 = 1589mm² 45% space factor

XL212 Trunking – with box in comp 2 or 3

- 2 = 2511mm² total area
- 2 = 1130mm² 45% space factor
- 3 = 2466mm² total area
- 3 = 1109mm² 45% space factor

Note: The dimensions shown in this drawing can be used to work out dimensions for XL211.

XL trunking – continued

Cable capacities

- All calculations allow for a 45% space factor.

As there can be differences between data cable sizes, Marshall-Tufflex recommend that cable dimensions are confirmed with the manufacturing company.

Cable capacity chart	Compartment 1		Compartment 2		Compartment 3		Compartment 4
	No box	With box	No box	With box	No box	With box	No box
PVC power cable 1.5mm² stranded copper							
XL201	147	–	249	131	147	–	–
XL202	147	–	249	131	184	–	–
XL211	147	–	249	131	247	124	147
XL212	147	–	249	131	247	124	184
PVC power cable 2.5mm² stranded copper							
XL201	100	–	170	89	100	–	–
XL202	100	–	170	89	126	–	–
XL211	100	–	170	89	168	88	100
XL212	100	–	170	89	168	88	126
PVC power cable 4.0mm² stranded copper							
XL201	76	–	129	67	76	–	–
XL202	76	–	129	67	95	–	–
XL211	76	–	129	65	128	66	76
XL212	76	–	129	65	128	66	95
Data cable: Ø5.5mm UTP & STP							
XL201	53	–	90	47	53	–	–
XL202	53	–	90	47	66	–	–
XL211	53	–	90	45	89	46	53
XL212	53	–	90	45	89	46	66
Data cable: Ø6.0mm UTP & STP							
XL201	44	–	75	39	44	–	–
XL202	44	–	75	39	56	–	–
XL211	44	–	75	38	75	37	44
XL212	44	–	75	38	75	37	56
Data cable: Ø6.5mm UTP & STP							
XL201	38	–	64	33	38	–	–
XL202	38	–	64	33	47	–	–
XL211	38	–	64	32	64	33	38
XL212	38	–	64	32	64	33	47
Data cable: Ø7.0mm UTP & STP							
XL201	33	–	55	29	33	–	–
XL202	33	–	55	29	41	–	–
XL211	33	–	55	28	55	28	33
XL212	33	–	55	28	55	28	41
Data cable: Ø8.4mm UTP & STP							
XL201	22	–	38	20	22	–	–
XL202	22	–	38	20	28	–	–
XL211	22	–	38	19	38	20	22
XL212	22	–	38	19	38	20	28