

UPS SYSTEMS from Tripp Lite

Whether supporting a single desktop PC, a home theatre or a rack of servers, UPS battery backup systems provide enough power to outlast most outages and can automatically shut down computers gracefully during extended blackouts.



DESKTOP UPS SYSTEMS

Designed for home and small office applications, desktop UPS systems provide protection against power problems such as blackouts, surges and line noise interference.



- Ranges from 350VA to 1500VA operation
- Select models feature surge protection over tel/network lines
- Most models include a built-in communication port that works with free PowerAlert® software

NETWORK/SERVER UPS SYSTEMS



Line-interactive network/server UPS systems provide automatic voltage regulation (AVR) to keep equipment working through low-voltage (brownouts) and high voltage conditions without draining battery power.

- Ranges from 500VA to 5000VA operation
- Select models include switched outlet banks that can be controlled independently, optional external battery packs for extended runtime and/or an accessory card slot for an SNMP card to enable remote monitoring and control

MISSION-CRITICAL UPS SYSTEMS

True on-line UPS systems provide mission-critical equipment with the highest level of protection



available. Double-conversion UPS technology continuously converts incoming AC power into filtered DC power, then resynthesises it back into AC power with a pure sine wave.

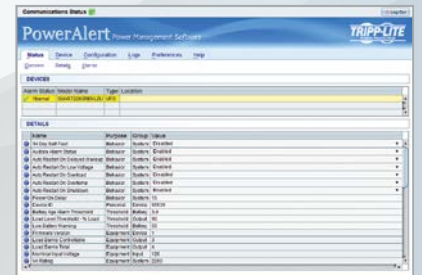
- Ranges from 750VA to 20kVA operation
- Select models feature hot-swappable battery replacement
- Zero transfer time to battery backup keeps networks up and running when a blackout occurs
- Built-in slot for SNMP network interface and relay card for remote monitoring and control options

For loads from 10kVA to 400kVA, a full range of 3-Phase UPS Systems is also available.

POWER MANAGEMENT

Monitor and control UPS systems, PDUs or cooling systems with FREE power management software.

Safely shut down systems in the event of prolonged power failures and reduce the time and cost spent tending to systems at the local level.



COMPARE TRIPP LITE MODELS

| Feature/Benefit | Desktop | Network/Server | Mission Critical |
|--|---------------|----------------|------------------|
| Battery Backup Emergency backup power for utility power outages | ✓ | ✓ | ✓ |
| Surge Protection Protection against power surges or spikes | ✓ | ✓ | ✓ |
| Brownout Protection Maintains safe voltage levels without using battery power | Select models | ✓ | ✓ |
| Overvoltage Protection Keeps overvoltages from damaging connected equipment without using battery power | — | Select models | ✓ |
| Fully On-Line Operation Zero transfer time to battery | — | — | ✓ |



Powering and Connecting
Your World

Tripp Lite UPS System Quick Reference Guide

| Model | VA/Watts | Outlets | Communications Ports | Half-Load Runtime |
|-------------------------------------|--------------|------------------------------|--------------------------|-------------------|
| DESKTOP UPS SYSTEMS | | | | |
| AVRX550U | 550VA/300W | 6 (C13) + tel/DSL | USB | 5.1 min. |
| AVRX550UD | 550VA/300W | 8 (CEE 7/7) + tel/DSL | USB | 9.7 min. |
| AVRX750U | 750VA/450W | 6 (C13) + tel/DSL | USB | 8.6 min. |
| AVRX750UD | 750VA/450W | 6 (CEE 7/7) + tel/DSL | USB | 8.6 min. |
| OMNIX350HG | 350VA/225W | 6 (C13) + tel/DSL | USB | 37 min. |
| OMNIVSX450 | 450VA/240W | 4 (C13) | — | 7 min. |
| OMNIVSX450D | 450VA/240W | 2 (CEE 7/7) | — | 7 min. |
| OMNIVSX650 | 650VA/360W | 4 (C13) | — | 6 min. |
| OMNIVSX650D | 650VA/360W | 2 (CEE 7/7) | — | 6 min. |
| OMNIVSINT800 | 800VA/475W | 4 (C13) + tel/DSL | USB | 10.8 min. |
| OMNIVSX850 | 850VA/480W | 6 (C13) | USB | 5 min. |
| OMNIVSX850D | 850VA/480W | 4 (CEE 7/7) | USB | 5 min. |
| OMNIVSINT1000 | 1000VA/500W | 6 (C13) + tel/DSL | USB | 12 min. |
| OMNIVSX1000 | 1000VA/600W | 8 (C13) | USB | 5 min. |
| OMNIVSX1000D | 1000VA/600W | 4 (CEE 7/7) | USB | 5 min. |
| OMNIVSX1500 | 1500VA/900W | 8 (C13) | USB | 6.5 min. |
| OMNIVSX1500D | 1500VA/900W | 4 (CEE 7/7) | USB | 6.5 min. |
| OMNIVSINT1500XL | 1500VA/940W | 8 (C13) + tel/DSL | USB | 13+ min. |
| NETWORK/SERVER UPS SYSTEMS | | | | |
| SMX500RT1U | 500VA/300W | 7 (C13) | USB/DB9/EPO/Network Slot | 14.6 min. |
| SMX700HG | 700VA/450W | 6 (C13) | USB/DB9 | 36 min. |
| SMX700HGL | 700VA/450W | 6 (C13) | USB/DB9 | 36 min. |
| SMX750SLT | 750VA/500W | 6 (C13) + tel/DSL | USB/DB9/Network Slot | 15 min. |
| SMX1000LCD | 1000VA/500W | 6 (C13) + tel/DSL | USB | 11 min. |
| SMX1200XLHG | 1000VA/750W | 6 (C13) | USB/DB9 | 27.5+ min. |
| SMX1200XLHGL | 1000VA/750W | 6 (C13) | USB/DB9 | 27.5+ min. |
| SMX1000RT2U | 1000VA/900W | 6 (C13) | USB/DB9/EPO/Network Slot | 11.9 min. |
| SMX1050SLT | 1050VA/650W | 8 (C13) + tel/DSL | USB/DB9/Network Slot | 20 min. |
| SMX1500LCD | 1500VA/900W | 8 (C13) + tel/DSL | USB/DB9 | 12 min. |
| SMX1500CDT | 1500VA/900W | 8 (C13) + tel/DSL | USB | 10 min. |
| SMX1500SLT | 1500VA/900W | 8 (C13) + tel/DSL | USB/DB9/Network Slot | 20 min. |
| SMARTINT1500 | 1500VA/940W | 6 (C13) | DB9 | 20 min. |
| SMX1500XLRT2U | 1500VA/1350W | 8 (C13) | USB/DB9/EPO/Network Slot | 13.6+ min. |
| SMARTINT2200VS | 2200VA/1600W | 9 (8 C13 + 1 C19) | USB/DB9/EPO/Network Slot | 19 min. |
| SMX2200XLRT2U | 2200VA/1920W | 8 (C13) | USB/DB9/EPO/Network Slot | 11.9+ min. |
| SMARTINT3000VS | 3000VA/2250W | 9 (8 C13 + 1 C19) | USB/DB9/EPO/Network Slot | 14+ min. |
| SMX3000XLRT2U | 3000VA/2250W | 9 (8 C13 + 1 C19) | USB/DB9/EPO/Network Slot | 11+ min. |
| SMX3000XLRT2UA | 3000VA/2700W | 9 (8 C13 + 1 C19) | USB/DB9/EPO/Network Slot | 11.1+ min. |
| SMX5000XLRT3U | 5000VA/3750W | 11 (8 C13 + 3 C19) | USB/DB9/EPO/Network Slot | 20+ min. |
| MISSION-CRITICAL UPS SYSTEMS | | | | |
| SU1000LCD2U | 1000VA/900W | 6 (C13) + tel/DSL | USB/DB9/EPO/Network Slot | 12.3+ min. |
| SU1000XLCD | 1000VA/900W | 4 (C13) | USB/DB9/Network Slot | 12.8+ min. |
| SU1500LCD2U | 1500VA/1350W | 6 (C13) + tel/DSL | USB/DB9/EPO/Network Slot | 12.6+ min. |
| SU1200XLCD | 2000VA/1800W | 7 (C13) | USB/DB9/Network Slot | 12+ min. |
| SU12200LCD2U | 2200VA/1980W | 9 (8 C13 + 1 C19) + tel/DSL | USB/DB9/EPO/Network Slot | 11.7+ min. |
| SU13000RTXL2U | 3000VA/2500W | 10 (8 C13 + 2 C19) | USB/DB9/EPO/Network Slot | 15+ min. |
| SU13000LCD2U | 3000VA/2700W | 10 (8 C13 + 2 C19) + tel/DSL | USB/DB9/EPO/Network Slot | 13.5+ min. |
| SU13000XLCD | 3000VA/2700W | 7 (6 C13 + 1 C19) | USB/DB9/Network Slot | 11.2+ min. |
| SU6000RT4UHV | 6000VA/5400W | 4 (C19) | USB/DB9/EPO/Network Slot | 8.5+ min. |
| SU6000RT4UHVHW | 6000VA/5400W | Hardwire | USB/DB9/EPO/Network Slot | 8.5+ min. |
| SU8000RT3UG | 8000VA/7200W | 6 (C19) | USB/DB9/EPO/Network Slot | 13.5+ min. |
| SU8000RT3UHW | 8000VA/7200W | Hardwire | USB/DB9/EPO/Network Slot | 13.5+ min. |
| SU10000RT3UG | 10kVA/9kW | 6 (C19) | USB/DB9/EPO/Network Slot | 12.5+ min. |
| SU10KRT3UHV | 10kVA/9kW | Hardwire | USB/DB9/EPO/Network Slot | 12.5+ min. |
| SU12KRT4UHW | 12kVA/10.8kW | Hardwire | USB/DB9/EPO/Network Slot | 8.5+ min. |
| SU16KRTG | 16kVA/14.4kW | 8 (C19) | USB/DB9/EPO/Network Slot | 13.5+ min. |
| SU16KRTHW | 16kVA/14.4kW | Hardwire | USB/DB9/EPO/Network Slot | 13.5+ min. |
| SU20KRTG | 20kVA/18kW | 8 (C19) | USB/DB9/EPO/Network Slot | 12.5+ min. |
| SU20KRTHW | 20kVA/18kW | Hardwire | USB/DB9/EPO/Network Slot | 12.5+ min. |

+ models feature expandable runtime with optional external battery packs.

**For loads from 10kVA to 400kVA, a full range of 3-Phase UPS systems is also available.
View the complete offering today by visiting www.tripplite.com/pages/3-phase-ups-solutions**

For more information, contact your Tripp Lite Representative:

Tripp Lite UK & Nordics +44.01635.887396 | info-uk@tripplite.com
 Tripp Lite Western Europe +44.01234.868010 | salesint@tripplite.com
 Tripp Lite Eastern Europe +36.70.388.7680 | salesint@tripplite.com
 Tripp Lite France +33.0.68.388.9150 | salesint@tripplite.com

