



**Erith School**  
Striving for Excellence

**EnGenius®**



**“We truly value all children irrespective of ability”**

“At Erith, we all want to make a difference to the life chances of the students in our care. Not only have we done well in terms of examination results but also in a huge range of other activities, which develop the “whole child”. We care passionately about sport, both individual achievements and team competitions, and creativity through art, music, dance, drama. We care about enriching children’s lives through school day trips and longer journeys which improve students’ understanding of particular subjects as well as developing vital personal skills. All of these go beyond exam grades and cannot be measured in league tables.”

Erith is a large Secondary School in the London Borough of Bexley with some 2,000 pupils and staff with ages ranging from 11-18. Located on the fringes of North West Kent, it is a specialised Sports, Mathematics and Computing Academy which stresses high academic achievement.

---

### **Key objectives for the WiFi Project**

- Capable of Hi-density performance
- High throughput over a large campus environment
- Seamless mobility
- Cost-effective WiFi solution
- To take full advantage of the capabilities of the laptops, tablets and hand-held devices the school has invested in
- Minimal to Zero ongoing costs

### **The Situation**

Erith School had an HP WiFi solution throughout the school site but as the number of users and client devices increased the availability of WiFi to users decreased. Lessons that once were carried out with hand-held devices and Laptops slowly ceased to be possible leading to considerable frustration and this impacted on lesson planning.

### **The Solution**

On such a large campus, a robust enterprise solution was required and once installed had to operate problem free from day one as the potential for major disruption was not an option.

Several manufacturers were selected to conduct trials including Ruckus and EnGenius; extensive tests were undertaken taking a total of three months to complete.

Budget cuts across the Education sector meant that the solution had to be robust, scalable and have incisive analytics to enable the Network Manager to see at a glance what was happening across the site as well as have minimal ongoing costs once installed. Erith School is a specialised Sports College producing a number of well known Athletes and has extensive playing fields that also require an external WiFi coverage.

At the end of the trial period, EnGenius was selected due to its performance, range, and ease of management and with an added benefit of Zero ongoing costs.

The EnGenius Neutron Solution provides a seamless WiFi blanket across the school both internally and externally. Its superior signal strength enables coverage not only for users on the pitches but also in the Community Sports Complex, multiple sports halls and class and lecture rooms.



### **The Benefits**

- Affordable and Enterprise level WiFi solution
- Easy installation and set up
- Concise analytics
- Superior signal strength
- Free Lifetime Warranty\*
- Free Firmware upgrades for Life
- Free Technical Support

### **The Installation**

79 EnGenius EWS360AP internal access points were installed across the site and 3 EWS660AP external access points for playing field coverage, with the whole solution

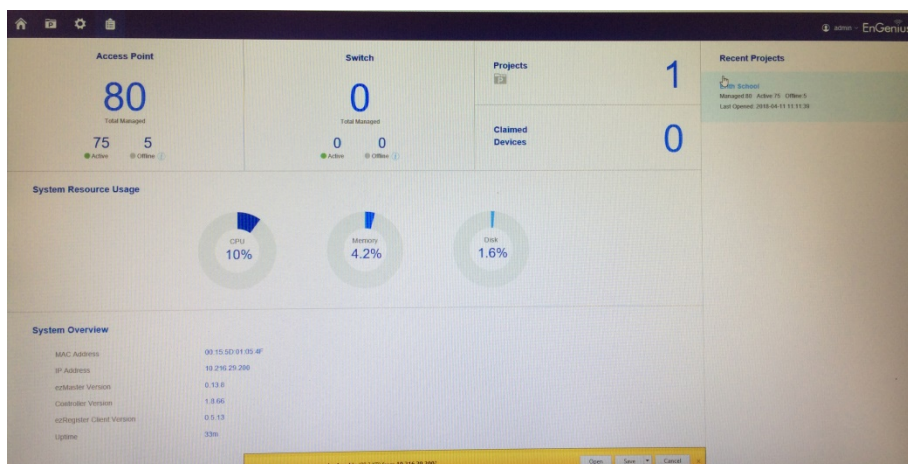
managed by the Free EzMaster Management suite that enables the addition of multiple sites to be added to the management console. EzMaster is especially useful for Academies that may have multiple locations.



Due to the size of this project and the limited IT resource, in terms of numbers of staff, within the school EnGenius provided an IT Engineer from the Netherlands branch office to assist in the installation ensuring a smooth transition to the EnGenius Neutron Solution.

Marc Hawkins, Erith School Business Manager commented "We invited several WiFi manufacturers to tender for our campus requirement and selected EnGenius not only for their competitiveness but the complete support along the whole selection process. The on-site technical availability of an EnGenius Engineer when the installation was installed was extremely useful and quite unexpected. We have approximately 2000 users on campus and it was important that the WiFi performed from day one"

The EnGenius Neutron Solution comes with a Lifetime Warranty\*, Free Firmware upgrades for Life and Free Technical Support.



<https://www.solwise.co.uk/>

<https://www.solwise.co.uk/engenius-lifetime-warranty.htm>

\*Limited Lifetime – see our website for Ts&Cs