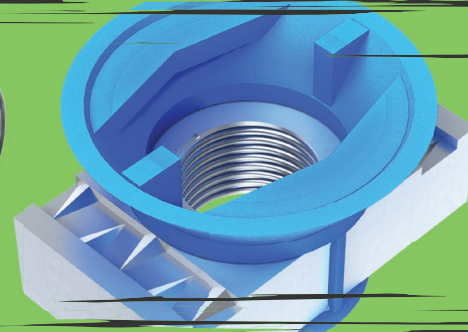
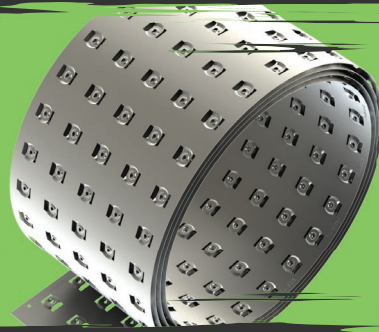
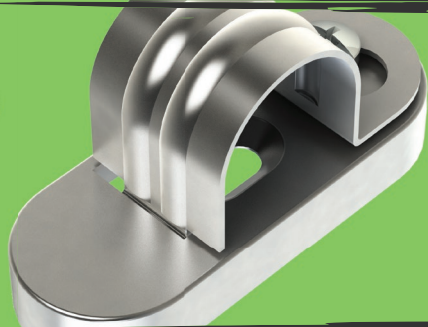
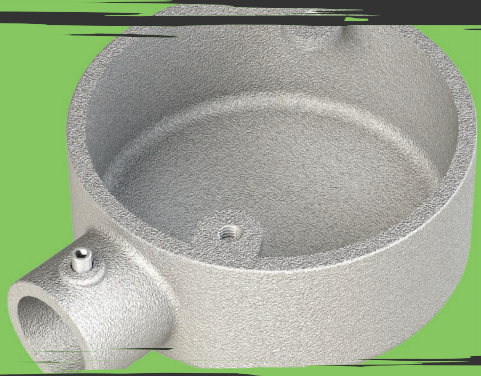


INNOVATIONS FOR THE BUILT ENVIRONMENT



CONLOK  
STEEL CONDUIT SYSTEM

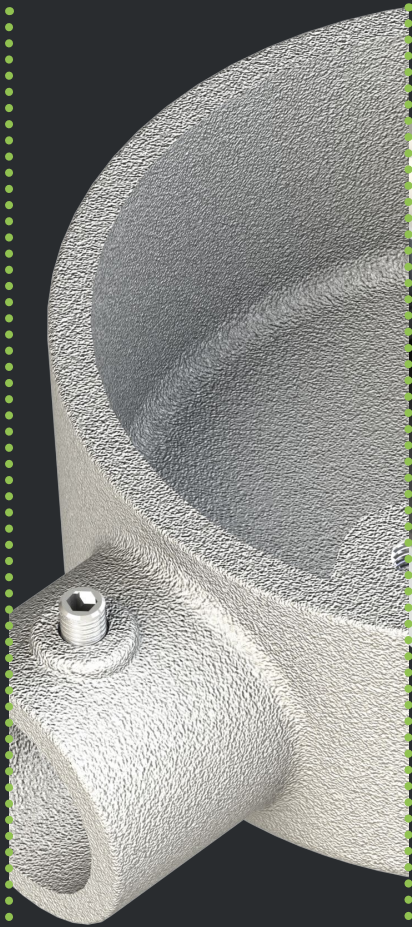
RAPID  
SADDLE

ROLLATRAY

EASYFIT  
CHANNEL NUTS

TRUN(KLIP)  
TRAY(KLIP)

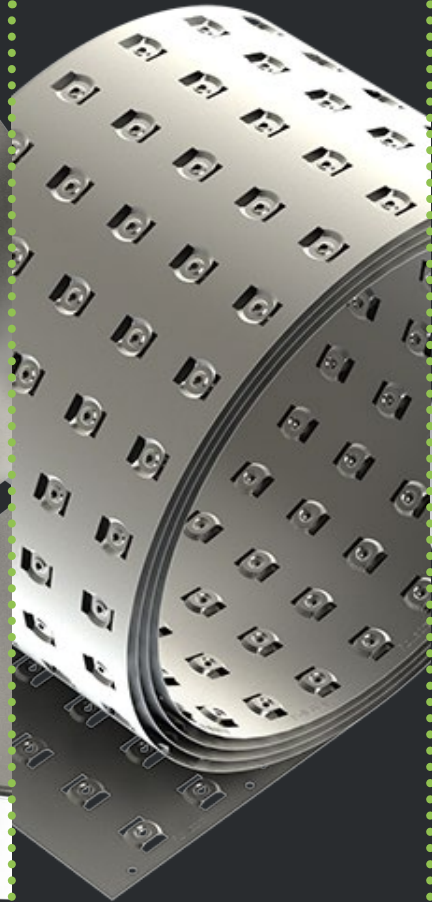
**Learning** from the past | **Manufacturing** for the present | **Innovating** for the future



OVER  
**75%**  
LABOUR SAVINGS



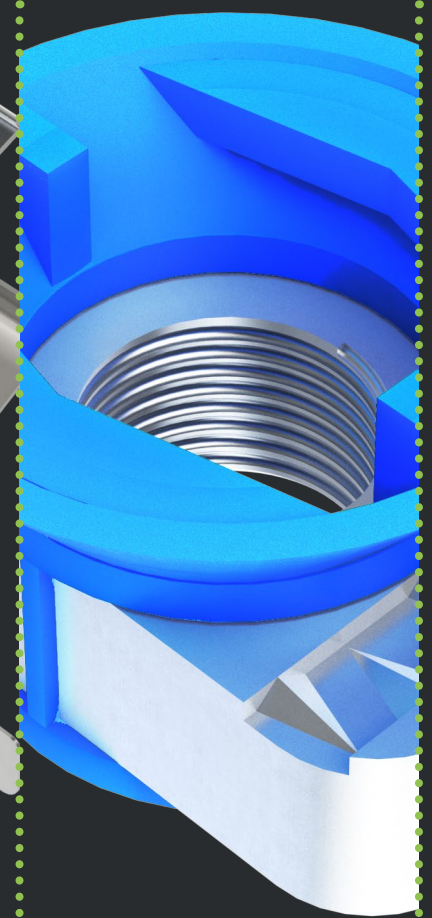
OVER  
**40%**  
LABOUR SAVINGS



UP TO  
**90%**  
LABOUR SAVINGS



OVER  
**70%**  
LABOUR SAVINGS



OVER  
**30%**  
LABOUR SAVINGS

Beginning operations in 2008, Demon Cato was devised to understand, address and ultimately answer the call for innovation within the construction industry.

The first product introduction was the hugely successful Conlok® system, now a staple product used in large scale commercial and infrastructure projects such as; Heathrow Terminal 2, the Sir Chris Hoy Velodrome and the new Tottenham Hotspur Football Club stadium.

Original Demon Cato products were solely designed for the contractor and are still supplied exclusively through our network of approved distributors and stockists. As well as typically offering significant labour savings, our products also provide key on-site health & safety benefits including reduced manual handling and SKU consolidation (where applicable).

Demon Cato became a Metpro brand in July 2021. With Metpro's 25 years of manufacturing experience and operating from a 61,000 square feet distribution centre, the acquisition of Demon Cato was a natural extension of the existing product offer. This brand has also enabled us to enhance our manufacturing capabilities as the legacy Metpro service to OEM customers now falls under the Demon Cato banner. More information on our bespoke manufacturing service can be found on page 29.

With exceptional levels of service and in-depth stocking policy, the complete range of products are available through a network of supporting Electrical Wholesalers and Distributors. To find out more about our product offering or if you have a product idea you would like to discuss, please contact our team and we will be happy to help.

## { Our Products } { Additional Information }

 **Conlok®**  
03-12

 **Rapid Saddle®**  
13-20

 **Rollatray®**  
23-30

 **Trunklip® & Trayclip™**  
33-36

 **EASYFIT CHANNEL NUTS**  
37-40

**7 Year Extended Warranty**  
21-22

**Additional Services & Support**  
41

**Frequently Asked Questions**  
42

**Contact Us & Demon Cato Online**  
42

**Demon Cato Manufacturing: An Overview**  
43

**Demon Cato Manufacturing: Our Capabilities**  
44

# CONLOK<sup>®</sup>

Traditional. **Upgraded.**

Over

**75%**

Labour Savings



DEMON CAT<sup>®</sup>

**STEEL CONDUIT SYSTEM**

**SEVEN YEAR  
EXTENDED WARRANTY  
AVAILABLE**

See page 22  
for more  
information

# What is Conlok®?

A fast-fix steel conduit system designed to significantly reduce installation times and increase on-site safety.

With finishes for internal, external and clean room applications, Conlok® offers over 75% labour savings through its innovative built-in grub screw, eliminating the need to thread conduit tube whilst offering the same levels of cable protection the industry expects.

The Conlok® system consists of the following products:



Steel Tube



Conduit Boxes



Couplers



Adaptors



Bends



Accessories

# Why use Conlok®?



**No need to thread conduit tube**  
With Conlok®'s unique built-in grub screw



**Fully galvanised system**  
Offering greater corrosion resistance



**Fast-fix solution**  
Ideal for major projects where cost & safety are critical



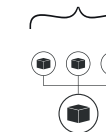
**Full range of accessories**  
Offering all the essential items for quick installations



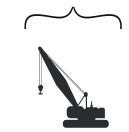
Increased on-site safety



Compliant to the latest standards



Reduced on-site storage



Used on major UK projects

Conlok® offered a safer and cleaner install with no bare threads visible, thus giving a clean finish with no overspray or excess threading showing. The fully galvanised Conlok® system was a big plus for our install being in a stadium environment without heating.

Another benefit of Conlok® was giving the client peace of mind with the extensive testing which has been carried out on vibration, earthing and CE certification. No other conduit accessory system has this level of testing.

John Fox | Contracts Manager, Imtech Engineering Services Ltd

# Where can Conlok® be installed?

## Internal & External Installations

Corrosion resistance is an incredibly important part of any installation. If components with the wrong finish are installed, this effectively places the entire system at risk of failure.

Featuring a more traditional Class 4 Hot Dip Galvanised (HDG) surface coating, this highly corrosion-resistant finish is designed to protect cables from damage and the elements.

External applications are where the self-sacrificing properties of this finish are of significant benefit, ensuring wires and cables are always kept safe from wind, rain, harsh sunlight, sand and other extremes of nature.

Internally, an HDG finish offers all these same benefits, particularly when installed within challenging environments such as the London Underground where cables are subject to potential ingress of dust and water caused by the frequent winds in excess of 200mph.

The Demon Cato Conlok® system is fully prepared for both internal and external environments and for full technical information, please see page 7. Full certification is available on request.

.....  
**Specification** | To specify, please state:

**Conlok® Class 4 HDG Steel Conduit System with built-in grub screw.**  
As **Demon Cato by Metpro Group.**

## Clean Rooms

With more and more computer-chip manufacturers being established and data centre construction seeing significant growth, cable management systems must be prepared to cater for these specialised environments.

A particular concern within these applications is zinc whiskers, the presence of which can cause a wide variety of issues, from short circuits to total equipment failure.

Featuring a highly-specialised protective coating, the Conlok® Clean Room system is purposefully designed to offer the expected levels of cable protection, whilst also preventing the dissipation of zinc whiskers and providing an aesthetically-pleasing and hygienic finish.

We recommend the use of this finish in the following environments; data centres, laboratories, microelectronics processing plants, biotechnology plants, pharmaceutical manufacturing plants, hospitals, and food processing plants.

Please see page 8 for full technical information.

.....  
**Specification** | To specify, please state:

**Conlok® Clean Room Steel Conduit System with built-in grub screw.**  
As **Demon Cato by Metpro Group.**

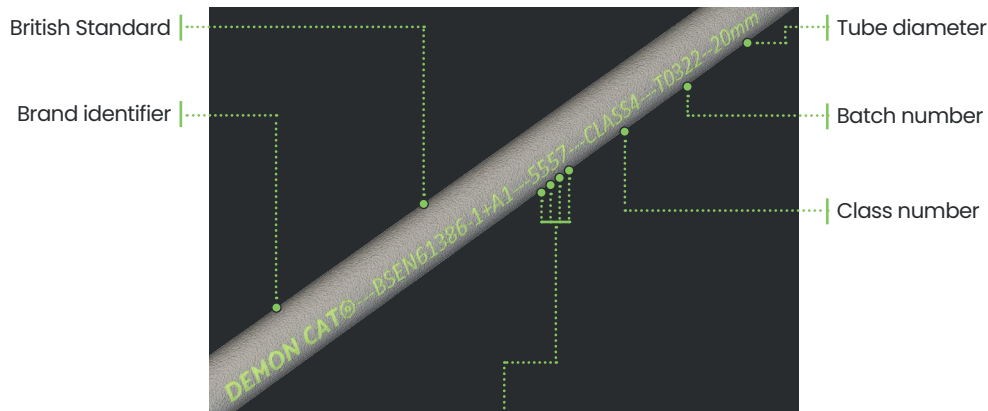
# Why Conlok® steel tube?

With little regulatory control over the quality of steel conduit tube entering the UK & ROI markets, we sought to address this head on, enhancing our Conlok® system with a dedicated product which is only of the highest quality and always compliant.

Our Conlok® steel tube offering has enabled us to offer the only complete fast-fix steel conduit system on the market, and one which we are proud to underwrite.

In line with our Conlok® conduit boxes & accessories offering, Conlok® steel conduit tube is available in both Class 4 HDG and Clean Room finishes. With threaded ends to allow for the extension of existing conduit systems, more information on how our lengths are marked can be found below.

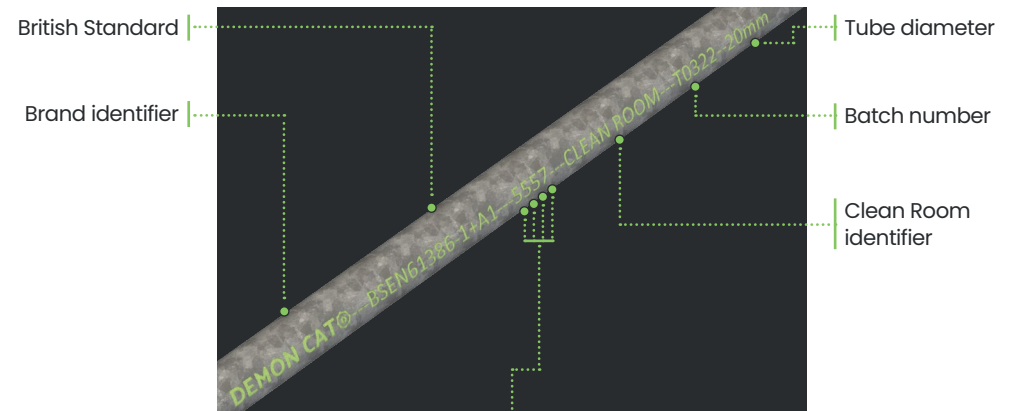
## How our Class 4 HDG lengths are marked



### BSEN61386-1:2008+A1:2019 Class Grades

<b>5</b>	<b>5</b>	<b>5</b>	<b>7</b>
Compression	Impact	Lower Temp. -45°C	Higher Temp. +400°C

## How our Clean Room lengths are marked



### BSEN61386-1:2008+A1:2019 Class Grades

<b>5</b>	<b>5</b>	<b>5</b>	<b>7</b>
Compression	Impact	Lower Temp. -45°C	Higher Temp. +400°C

# Case Study: Conlok® Installation Speed Test

## Labour cost vs installation time

Cost savings have always been high on the agenda as Contractors seek new ways to build better, faster and smarter. Conlok® exceeds these requirements, as detailed in our case study below and carried out in partnership with a major UK M&E Contractor.

### Case study:

Based on the installation of 300 mixed boxes as detailed below and labour costs for a JIB Approved Electrician with own transport - £17.70 per hour / £0.30 per min.

Using the traditional screwed system, the average amount of time to cut, dress, thread and fit a box to a piece of conduit tube is **5 minutes**.

The 600 ends were installed in 60 hours with a labour cost of **£1200**.

Using Conlok®, the average amount of time to cut, dress and fit a box to a piece of conduit tube is **1 minute**.

The 600 ends were installed in 10 hours with a labour cost of **£240**.

	Traditional cost	Conlok® cost	No. of Boxes/Ends	Traditional total cost	Conlok® total cost	Traditional installation time per box (min)	Conlok® installation time per box (min)	Traditional cost to install	Conlok® cost to install
20mm End Box	£1.13	£2.04	100/100	£113	£204	5	1	£147.50	£29.50
20mm Through Box	£1.14	£2.23	100/200	£114	£223	10	2	£295.00	£59.00
20mm Tee Box	£1.23	£2.32	100/300	£123	£232	15	3	£442.50	£88.50

*Please note: all costs are accurate as of October 2021*

### Total materials cost:

Traditional = **£350**

Conlok® = **£659**

### Total labour cost:

Traditional = **£885**

Conlok® = **£177**

### Contract saving:

**£399**

### Labour saving:

**£708**

**80%**





**Our dedicated steel conduit centre  
holds up to 1200km of tube at any time.**

## Internal & External Conlok®

### Class 4 HDG Steel Conduit Tube

Conforms to BS EN 61386-1:2008+A1:2019 (Conduit Systems for Cable Management)

Manufactured from sheet steel with HDG coating applied to Class 4 BS EN 61386-1:2008+A1:2019

All lengths are Hot Dip Galvanised internally & externally

All lengths are ink jet marked: Demon Cato - BSEN61386+A1 - 5557 - Class 4 - (20 or 25mm as required)

Authorised for use on London Underground to LU Standard 1-085 (for use on surface & sub-surface locations)

Minimal wall thickness = 1.37mm & heat treated to ensure no breaking or coating tearing during tube bending

**BS EN 61386-1:2008+A1:2019**  
Achieved the highest Class in all tests as specified

Each length is supplied with plastic thread protection caps on each end

### Class 4 HDG Conduit Boxes & Accessories

Manufactured from malleable iron with a hot dip galvanised finish to Class 4 BS EN 61386-1:2008+A1:2019

Conforms to BS EN 61386-21:2004 (Conduit Systems for Cable Management - Rigid Conduit Systems)

Manufactured in accordance with the Low Voltage Directive 2014/35/EU

Conlok® grub screws are manufactured from Grade 12.9 Steel

**Tensile test:** when a tensile force of 1000N and 500N (heavy & medium grade) was applied for 2 minutes, the samples remained properly assembled to the conduit

**Suspended load test:** when a load of 450N was applied for 48 hours, the samples passed due to there being no cracks nor deformation to the conduit

**Bonding test:** a current of 25A is passed through a conduit assembly before the voltage drop is measured - the samples passed with a resistance no greater than 0.1 ohm

**Corrosion test:** tested both inside & outside using Classification 4 (High Protection), all samples passed with no signs of corrosion

# Technical Information:

## Clean Room Conlok®

### Clean Room Steel Conduit Tube

Conforms to BS EN 61386-1:2008+A1:2019 (Conduit Systems for Cable Management)

Manufactured from sheet steel in accordance to BS EN 61386-1:2008+A1:2019

Demon Cato highly specialised Clean Room finish applied to both internal & external walls of each length

All lengths are ink jet marked:  
Demon Cato - Clean Room - 5557 - BSEN61386-1+A1 - (20 or 25mm as required)

**BS EN 61386-1:2008+A1:2019**  
Achieved the highest Class in all tests as specified

Minimal wall thickness = 1.37mm & heat treated to ensure no breaking or coating tearing during tube bending

### Clean Room Conduit Boxes & Accessories

Conforms to BS EN 61386-1:2008+A1:2019 (Conduit Systems for Cable Management)

Demon Cato highly specialised Clean Room finish applied to both internal & external walls of each box and accessory

Conforms to BS EN 61386-21:2004 (Conduit Systems for Cable Management - Rigid Conduit Systems)

Manufactured in accordance with the Low Voltage Directive 2014/35/EU

Conlok® grub screws are manufactured from Grade 12.9 Steel

**Tensile test, suspended load test, bonding test;** please refer to page 7

## Where Conlok® is installed

**Tottenham Hotspur  
FC Stadium,**  
White Hart Lane  
London



**Proctor & Gamble,**  
Manchester

**Heathrow T2,**  
Heathrow

**HMP Aberdeen,**  
Aberdeen

**Sir Chris Hoy  
Velodrome,**  
Glasgow

**Edinburgh Airport,**  
Edinburgh

**MOD Bicester,**  
Oxfordshire

**Bullring,**  
Birmingham

**Midland  
Metropolitan  
Hospital,**  
West Midlands



**Tees Rep Biomass  
Power Station,**  
Glasgow

**Earls Gate Energy  
Centre,** Grangemouth



**J. Radcliffe  
Hospital,** London



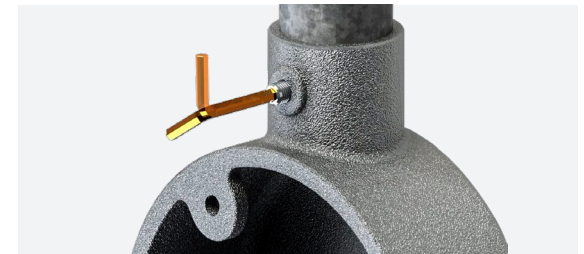
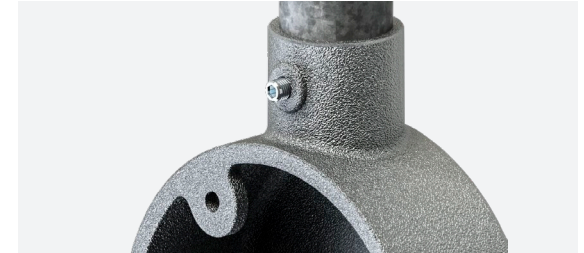
**Isleworth & Syon  
School,** Isleworth

**HMP Addiewell,**  
West Lothian

**HMP Bedford,**  
Bedford

**Kendrew Barracks,**  
Oakham

## How Conlok® is installed



# Luckins TSI Codes

## Conlok® Class 4 HDG System

Demon Cato Code	Product Description	TSI Code
CLGCEXTERNAL20	20mm x 3mtr Class 4 HDG	434174353
CLGCEXTERNAL25	25mm x 3mtr Class 4 HDG	434174366
CL1G	20mm Terminal Box	391797257
CL2G	20mm Through Box	391797338
CL3G	20mm Angle Box	391797354
CL4G	20mm Tee Box	391797367
CL5G	20mm Intersection Box	391797396
CL6G	20mm Branch U Box	391797406
CL7G	20mm Branch Y Box	391797419
CL8G	25mm Terminal Box	391797422
CL9G	25mm Through Box	391797435
CL10G	25mm Angle Box	391797448
CL11G	25mm Tee Box	391797451
CL12G	25mm Intersection Box	391797464
CL13G	25mm Branch U Box	391797477
CL14G	25mm Branch Y Box	391797480
CL15G	25mm Terminal Box c/w 25mm Hole in Base	391797516
CL16G	20mm Back Outlet Box c/w screw	391797529

Demon Cato Code	Product Description	TSI Code
CL20FC	20mm Female Coupler	391797558
CL25FC	25mm Female Coupler	391797561
CL20GA	20mm Adaptor	391797590
CL25GA	25mm Adaptor	391797600
CL20GC	20mm Solid Coupler	391797532
CL25GC	25mm Solid Coupler	391797545
CL20MB	20mm Solid Bend	391797613
CL25MB	25mm Solid Bend	391797626
CLKEY	Conlok® Allen Key	391797639
CLKIT	Conlok® Allen Key c/w 2 x Grub Screws	425711327

## Conlok® Clean Room System

Demon Cato Code	Product Description	TSI Code
CLGCCLEAN20	20mm x 3mtr Clean Room	434655843
CLGCCLEAN25	25mm x 3tr Clean Room	434655856
CL1GCCLEAN	20mm Terminal Box	434164101
CL2GCCLEAN	20mm Through Box	434164114
CL3GCCLEAN	20mm Angle Box	434164127
CL4GCCLEAN	20mm Tee Box	434164130
CL5GCCLEAN	20mm Intersection Box	434163908
CL6GCCLEAN	20mm Branch U Box	434163911
CL7GCCLEAN	20mm Branch Y Box	434163924
CL8GCCLEAN	25mm Terminal Box	434163937
CL9GCCLEAN	25mm Through Box	434163940
CL10GCCLEAN	25mm Angle Box	434163953
CL11GCCLEAN	25mm Tee Box	434163966
CL12GCCLEAN	25mm Intersection Box	434163979
CL13GCCLEAN	25mm Branch U Box	434163982
CL14GCCLEAN	25mm Branch Y Box	434163995
CL15GCCLEAN	25mm Terminal Box c/w 25mm Hole in Base	434164004
CL16GCCLEAN	20mm Back Outlet Box	434164017

Demon Cato Code	Product Description	TSI Code
CL20FCCLEAN	20mm Female Coupler	434164088
CL25FCCLEAN	25mm Female Coupler	434164091
CL20GACLEAN	20mm Adaptor	434164046
CL25GACLEAN	25mm Adaptor	434164059
CL20GCCLEAN	20mm Solid Coupler	434164020
CL25GCCLEAN	25mm Solid Coupler	434164033
CL20MBCLEAN	20mm Solid Bend	434164062
CL25MBCLEAN	25mm Solid Bend	434164075

# RAPID<sup>®</sup>

SADDLE

Fast. Efficient. **Innovative.**

Over  
**40%**  
Labour Savings



DEMON CAT<sup>®</sup>  
**STEEL CONDUIT SYSTEM**

**SEVEN YEAR**  
EXTENDED WARRANTY  
AVAILABLE

See page 22  
for more  
information

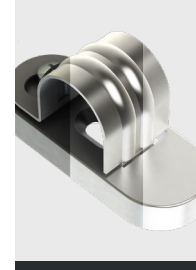
# What is Rapid Saddle?

An innovative new saddle designed to increase installation speeds and catering for the requirements of both spacer bar and distance saddles.

Utilising a unique hinged strap and with finishes for internal, external and clean room applications, Rapid Saddle significantly increases installation times with over 45% savings offered.

Holding steel conduit tube lengths in situ. also makes Rapid Saddle an ideal solution for a single installer, as well as improving on-site safety, particularly when working at height.

# Why use Rapid Saddle?



**Finishes for all environments**  
Delta Protekt® 120  
Bright Zinc Plated  
Clean Room



**Greater on-site safety**  
No dropped screws or straps,  
ideal for working at height



**Holds conduit tube in situ.**  
Making installations simple, even for a single installer



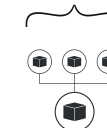
**Single screw fixing**  
Locate the saddle strap & quarter turn to secure



Increased on-site safety



Salt spray tested to 500+ hours\*



Reduced on-site storage



Conceived & designed in-house

\*Delta Protekt option only

# Where can Rapid Saddle be installed?

## External Installations

As stated within our Conlok® range, corrosion resistance is of paramount importance to the contractor when it comes to external installations.

Our external use Rapid Saddle® features a brand-new coating for the industry; Delta Protekt® 120. Initially designed for offshore wind turbines before finding popularity within the automotive sector, the Delta Protekt finish offers all the benefits of Hot Dip Galvanising, all within a thinner surface coating.

Due to the unique hinge design of Rapid Saddle, the more traditional HDG finish was too thick and rendered the product unusable. Delta Protekt therefore was the perfect solution.

Salt spray tested to 500+ hours and offering the same standoff as distance saddles, full technical information can be found on page 15.

Full certification is available on request.

.....  
**Specification** | To specify, please state:

**Rapid Saddle External**  
as **Demon Cato by Metpro Group.**

## Internal Installations

When it comes to internal installations, the requirement for high corrosion-resistance is often much reduced if present at all.

Our internal use Rapid Saddles are designed to offer users all of the same benefits as the external version, however feature a more familiar Bright Zinc Plated (BZP) finish.

With a clean aesthetic and the same deep 5mm base, internal Rapid Saddles are an ideal fast-fix solution for uneven internal walls and when working at heights.

Full technical information can be found on page 15.

Full certification is available on request.

.....  
**Specification** | To specify, please state:

**Rapid Saddle Internal**  
as **Demon Cato by Metpro Group.**

## Clean Rooms

Designed to work directly with our Clean Room Conlok® system, the Demon Cato Clean Room Rapid Saddle features the same specialised coating designed for use in clean and high-hygiene applications.

An added benefit of Rapid Saddle's deep base is the ease of cleaning this provides when wiping down surfaces.

Recommend for use in the environments advised on page 6 (Clean Room Conlok®), full technical information can be found on page 15.

Full certification is available on request.

.....  
**Specification** | To specify, please state:

**Rapid Saddle Clean Room**  
as **Demon Cato by Metpro Group.**



## Case Study: Rapid Saddle Installation Speed Test

### Labour cost vs installation time

With steel conduit tube & accessories being one of our primary ranges, we noticed a distinct lack of innovation within this system. Tasking our Product Development team to conceptualise new products designed for the contractor, Rapid Saddle was fast-tracked for development following extensive testing and research. Available in three finishes and offering over 40% labour savings, this unique innovation can replace both spacer bar saddles and distance saddles with a fast-fix solution.

### Case study:

Based on the installation of 50 3mtr lengths of steel conduit tube as detailed below and labour costs for a **single\*** JIB Approved Electrician with own transport - **£17.70 per hour / £0.30 per min.** \*steel conduit tube is typically installed by multiple personnel - Rapid Saddle has been designed for a single installer.

Using traditional distance saddles, the amount of time to install the run is **1 hour and 40 minutes.**

The 150-metre run was installed with a labour cost of **£33.75.**

Using Rapid Saddle, the amount of time to install the run is **1 hour and 2 minutes.**

The 150-metre run was installed with a labour cost of **£18.60.**

	Cost	Traditional total cost	Rapid Saddle total cost	Installation time per saddle (secs)	Traditional cost to install	Rapid Saddle cost to install
20mm Distance Saddle (x150)	£0.27	£40.50	-	75	£74.25	-
20mmx3mtr Steel Conduit Tube (x50)	£7.22	£361	£361	-	-	-
20mm Rapid Saddle: Delta Protekt® 120 (x150)	£0.19	-	£28.50	42	-	£47.10

*Please note: all costs are accurate as of October 2021*

### Total materials cost:

Traditional = **£401.50**

Rapid Saddle = **£389.50**

### Total cost (including labour):

Traditional = **£475.75**

Rapid Saddle = **£436.60**

### Contract saving:

**£39.15**

### Labour saving:

**£15.15**

**44%**

# Internal, External & Clean Room Rapid Saddle

External Rapid Saddle®		Internal Rapid Saddle®		Clean Room Rapid Saddle®	
Conforms to BS EN 61386-1:2008+A1:2019 (Conduit Systems for Cable Management)	Manufactured to comply with BS EN 61386-25:2011 (Conduit Systems for Cable Management - particular requirements)	Conforms to BS EN 61386-1:2008+A1:2019 (Conduit Systems for Cable Management)	Manufactured to comply with BS EN 61386-25:2011 (Conduit Systems for Cable Management - particular requirements)	Conforms to BS EN 61386-1:2008+A1:2019 (Conduit Systems for Cable Management)	Manufactured to comply with BS EN 61386-25:2011 (Conduit Systems for Cable Management - particular requirements)
Features a highly corrosion-resistant Delta Protekt® 120 surface coating (HDG equivalent)	Manufactured from pressed steel	Features a BZP surface coating offering basic corrosion resistance with a clean aesthetic finish	Manufactured from pressed steel	Features a highly specialised surface coating designed for use exclusively within clean room environments	Manufactured from pressed steel
Deep 5mm base designed to offer the same stand off as traditional distance saddles	Each unit is supplied requiring only a quarter turn to secure	Deep 5mm base designed to offer the same stand off as traditional distance saddles	Each unit is supplied requiring only a quarter turn to secure	Deep 5mm base offers easier wiping down for high hygiene environments	Each unit is supplied requiring only a quarter turn to secure

## Technical Information: Load Test Results

### Lateral Load Test

A length of steel conduit tube was secured using two Rapid Saddle®s and weight applied in increments as detailed within the standard BS EN 61386-1:2008+A1:2019 to Class 4.

**Vertical test | 20mm / 25mm**

**Test requirements:** 4kg / 8kg

**Slight deformation at:** 28kg / 28kg

**Load when test was stopped:** 133.6kg / 133.6kg

*Note: Test was stopped before product failed*

**Horizontal test | 20mm / 25mm**

**Test requirements:** 4kg / 8kg

**Slight deformation at:** 38kg / 28kg

**Load when test was stopped:** 101.5kg / 90kg

Results for both tests = **PASS**

### Axial (Slip) Load Test

A length of steel conduit tube was secured using a single Rapid Saddle and weight applied in increments as detailed within the standard BS EN 61386-1:2008+A1:2019 to Class 4.

**Vertical test | 20mm / 25mm**

**Test requirements:** no weight limit advised

**Slippage began at:** 7kg / 10.25kg

Result = **N/A (manufacturer specified)**

## Where Rapid Saddle is installed

Major Regeneration Project,  
Bristol



Beacon College,  
Hereford



## How Rapid Saddle is installed



{ FIX }



{ INSERT }



{ SECURE }

## Luckins TSI Codes

### External Rapid Saddle

Demon Cato Code	Product Description	TSI Code
RAPID20EXTERNAL	20mm Rapid Saddle® Delta	407463415
RAPID25EXTERNAL	25mm Rapid Saddle® Delta	407463428

### Internal Rapid Saddle

Demon Cato Code	Product Description	TSI Code
RAPID20INTERNAL	20mm Rapid Saddle® BZP	407463431
RAPID25INTERNAL	25mm Rapid Saddle® BZP	407463444

### Clean Room Rapid Saddle

Demon Cato Code	Product Description	TSI Code
RAPID20CLEAN	20mm Rapid Saddle® Clean Room	407463457
RAPID25CLEAN	25mm Rapid Saddle® Clean Room	407463460



**Our in-house engineer, Grand Lee,  
working on our Rapid Saddle® 3D model**

DEMON CAT®

# STEEL CONDUIT SYSTEM

**SEVEN YEAR  
EXTENDED WARRANTY**



# Demon Cato Steel Conduit System | 7 Year Extended Warranty

## Demon Cato offers a 7-year warranty against their Conlok® System and Rapid Saddle® products when used to create a 'Steel Conduit System'.

As the only fully galvanised conduit system available, this extended and limited warranty applies to Demon Cato Conlok® Steel Conduit Tube, Conlok® Malleable Boxes & Accessories, Rapid Saddle® and Metpro branded steel conduit accessories (where applicable), henceforth known as the "System", manufactured by Demon Cato and Metpro.

As detailed in this warranty, the "Conlok® Steel Conduit System" means Demon Cato Conlok® Steel Conduit Tube, Conlok® Malleable Boxes & Accessories that are purchased together and used simultaneously.

Demon Cato (and Metpro) warrants that the System is free from any lawful security interest and that for a seven (7) year period from the original date of shipment, the System will be free of defects in materials and workmanship which arise under proper and normal service.

The Purchaser's exclusive remedy is limited to Demon Cato's replacement of the non-conforming System (or non-conforming products therein) manufactured by Demon Cato (or Metpro where applicable). The Purchaser will be solely responsible for all shipping, disassembly and re-installation expenses associated with the replaced System. Expressly excluded from this warranty are non-conformities arising from:

- (i) improper installation
- (ii) lack of proper inspection or maintenance
- (iii) inclusion of materials by other manufacturers
- (iv) usage not in accordance with the published ratings or standards.

The provisions of this warranty shall be applicable with respect to any product which Demon Cato (or Metpro) replaces pursuant to it. Any System non-conformance must be reported to Demon Cato in reasonable written detail within the warranty period and the Purchaser must comply with Demon Cato's instructions regarding the return or disposal of any non-conforming products.



Sometimes, **speed is everything.**

Up to  
**90%**  
Labour Savings





# What is Rollatray®?

A unique new product designed to dramatically increase installation speeds and reduce downtime in a wide variety of installations.

Fixed directly to a solid surface, each 15 metre coil of Rollatray® comes prepared for immediate installation, lying flat once rolled out and without the need for additional items such as couplers or brackets.

Offering up to 90% labour savings and with the added benefit of improved on-site safety with no hot works permits necessary, Rollatray® can hold multiple cables and meets the same required standards as traditional cable tray.

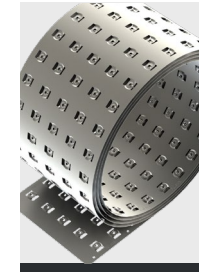
# Why use Rollatray®?



**No couplers or brackets required**  
Easily installed anywhere with a solid surface



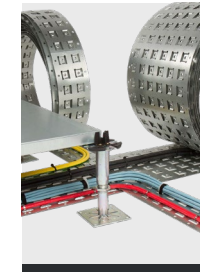
Increased on-site safety



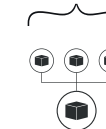
**15mtr coils roll out in 15 seconds**  
Available in 3 widths; 150mm, 300mm, 450mm



Compliant to the latest standards



**Flexible fixing arrangement**  
With Rollatray®'s innovative raised nipples & snail thread



Reduced on-site storage



**Simple bends, tees & 4-ways**  
Crossover Rollatray® units & secure with an M6 screw



Accepts a wide range of cable ties

# Where can Rollatray® be installed?

## Internal Installations

Manufactured from pre-galvanised sheet steel, Rollatray® is perfectly suited to internal applications where large cable runs are required.

Featuring a dry to touch oil applied to cut areas of the material, Rollatray® features suitable corrosion resistant properties for installations within commercial buildings, riser mains, multi-storey buildings and factory/automation lines to name some examples.

For full technical information, please see page 23.

Full certification is available on request.

.....  
**Specification** | To specify, please state:

**Rollatray® Internal**  
as **Demon Cato by Metpro Group.**

## Clean Rooms

Manufactured from the same material as our internal finish option, Clean Room Rollatray® features our purpose-designed specialist coating for high hygiene and clean room environments.

Designed to offer the same protective benefits as Clean Room

Conlok® and Rapid Saddle®, this finish ensures the prevention of potentially harmful zinc whiskers making Clean Room Rollatray® an ideal solution for data centres, hospitals and other similar applications.

Technical information for this product can be found on page 23.

Full certification is available on request.

.....  
**Specification** | To specify, please state:

**Rollatray® Clean Room**  
as **Demon Cato by Metpro Group.**

## Case Study:

# Rollatray® Installation Speed Test

### Labour cost vs installation time

As more and more businesses adopt an online service offering leading to increased infrastructure demand, and the UK construction sector set to continue its upward trend for some time, on-site activities need to be as smooth and efficient as possible. With cable installations playing a huge part in this growth, Rollatray® has been designed as a simple and fast solution which can cut downtime by up to 90%.

### Case study:

Based on the installation of a 30-metre underfloor run using the products detailed below and labour costs for a JIB Approved Electrician with own transport - £17.70 per hour / £0.30 per min.

Using the traditional cable tray system, the average amount of time to cut, dress, combine and secure each 15mtr run is **1.6 hours (20 mins per length)**.

The 30-metre run was installed in 3.3 hours with a labour cost of **£58.41**.

Using Rollatray®, the average amount of time to roll out and secure the coil is **10 minutes per coil**.

The 30-metre run was installed in 20 minutes with a labour cost of **£5.90**.

Traditional total materials cost	Rollatray® total materials cost
£311.02	£241.10
<b>Includes:</b> 300mmx3mtr cable tray x 10 Couplers x 4 pairs M6x12mm roofing bolts & nuts x 200 4x41mmx300mm slotted channel x 15 M6 spring nuts x 30	<b>Includes:</b> 300mmx15mtr Rollatray® x 2

Please note: all costs are accurate as of October 2021

### Total labour cost:

Traditional = **£58.41**

Rollatray® = **£5.90**

### Total material & installation cost:

Traditional = **£369.43**

Rollatray® = **£247.00**

### Labour saving:

**£52.51**

⋮

**90%**

### Contract saving:

**£122.43**

## Technical Information:

# Rollatray®

Manufactured from 0.8mm medium duty pre-galvanised steel

Manufactured to BS EN 10346:2009 (Continuously Hot-Dip Coated Steel Flat Products) in line with standard cable tray

Meets the earthing requirements of BS EN 61537:2007 (Cable Management - Cable Tray Systems & Cable Ladder Systems)

**Clean Room Rollatray®:**  
Features our specialised clean room surface coating

Each coil is coated with a dry to touch oil to protect any cropped areas of the sheet material

Easily cut to size using a guillotine with no hot works permits required, offering significant on-site health & safety benefits

Suitable for structured cabling, fibre optic, fire/security and low voltage distribution

Fixed to a structure simply using tapcon screws or a Pulsa nail gun

Each coil rolls out in a controlled manner at 1 metre per second

No material memory means Rollatray® lies flat once uncoiled, ready for installation

**M6 snail thread test:** a load of 0.5kN was applied to 5 samples of each Rollatray® width with no failures being recorded

All Rollatray® coils are supplied in weatherproof coverings ensuring efficient delivery to site

Our Rollatray® units are also supplied with a 12 month warranty as standard.

# Technical Information: Rollatray® Coil Weights

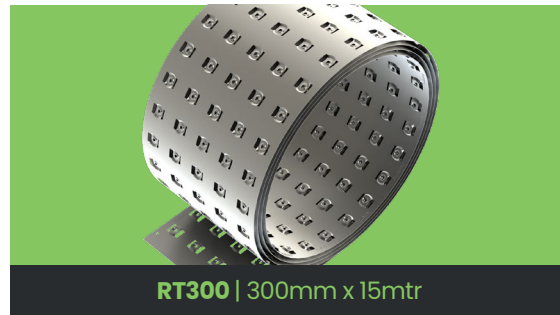
Rollatray® offers significant space savings, particularly during transit and on-site.

However the weight of each width should be considered at all times.  
Please see the weight of each coil and our recommendation for carrying these below.



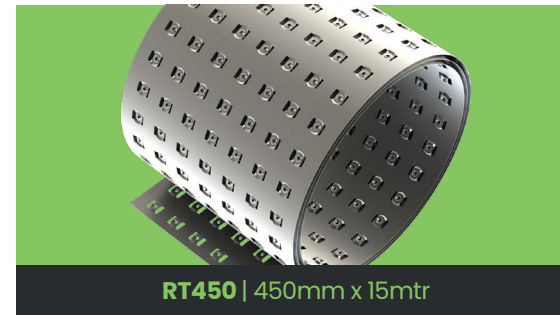
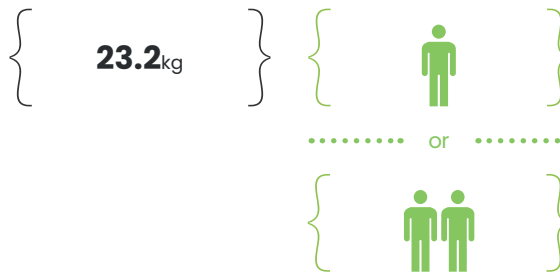
Weight per coil:

Recommended handling:



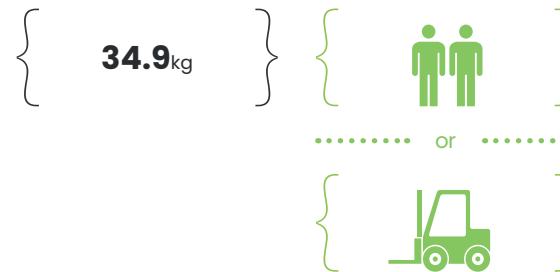
Weight per coil:

Recommended handling:



Weight per coil:

Recommended handling:



## Where Rollatray® is installed

Olympic Park  
Redevelopment,  
London



Boston Scientific  
Building, Clonmel

Boston Scientific  
Building, Galway

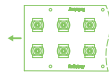
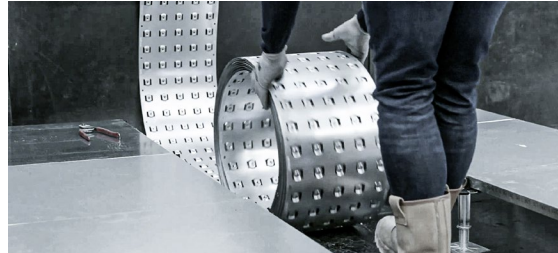
Major Data Centre  
Project, Dublin

Burrell Collection,  
Glasgow

Skypark Fit Out,  
Glasgow

St James Centre,  
Edinburgh

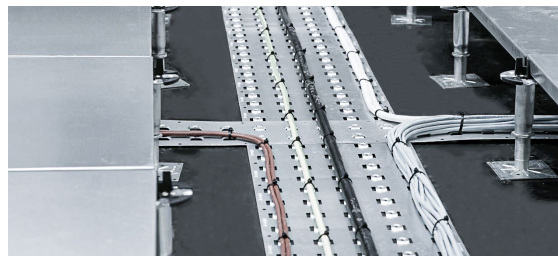
## How Rollatray® is installed



{ ROLL }



{ SECURE }

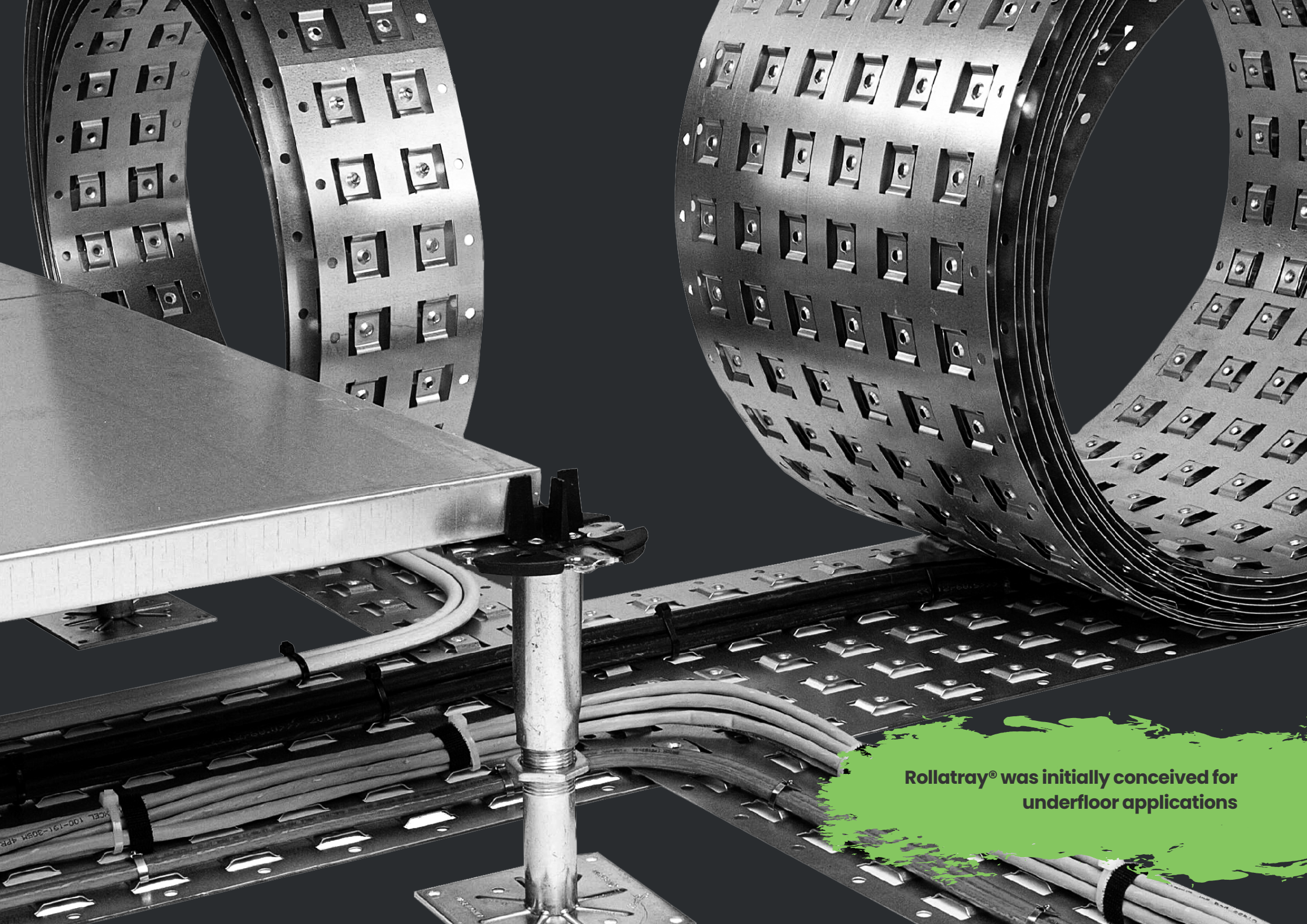


{ DONE }

## Luckins TSI Codes

### Rollatray®

Demon Cato Code	Product Description	TSI Code
RT150	150mm x 15mtr Rollatray®	408810122
RT300	300mm x 15mtr Rollatray®	408810135
RT450	450mm x 15mtr Rollatray®	408810148
RTCUTTER	Rollatray® Guillotine	434560242

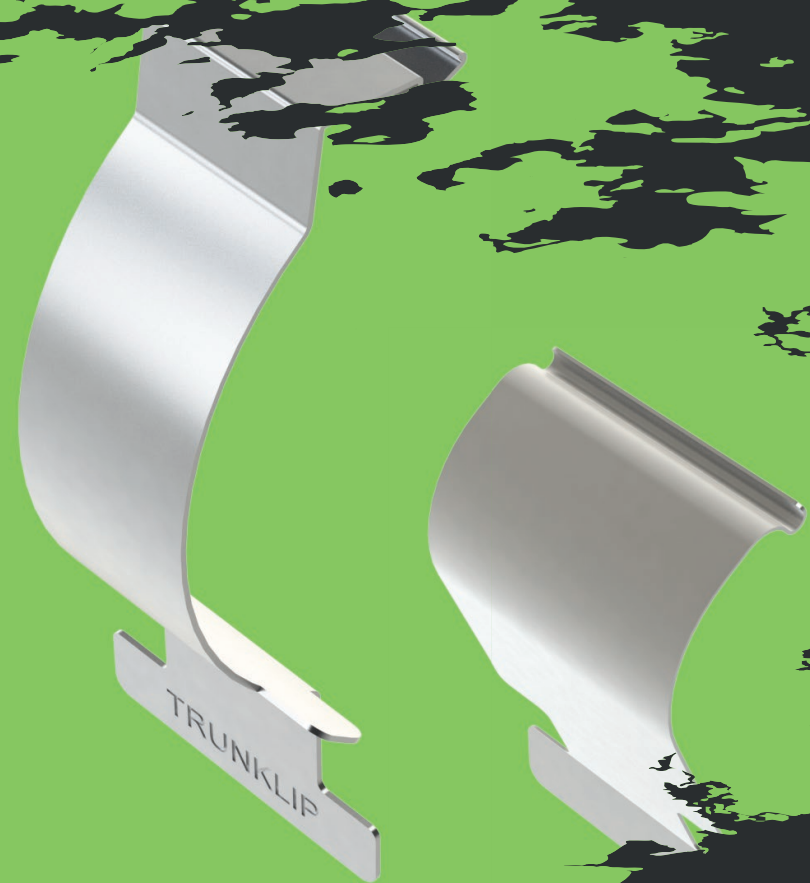


**Rollatray® was initially conceived for underfloor applications**

# TRUN(KLIP)<sup>®</sup> & TRAY(KLIP)<sup>™</sup>

No drills, bolts or nuts.  
**Makes sense.**

Over  
**70%**  
Labour Savings





## What are Trunklip® & Trayklip®?

Removing the need for drills, bolts or nuts, Trunklip® & Trayklip® offer a brand new and much quicker solution for securing steel channel to trunking and cable tray.

Featuring a H-frame base and designed to work with most major UK brands, both Trunklip® and Trayklip® negate the need for conventional fixing methods, resulting in over 70% labour savings on offer.

With their ability to sit within steel channel lengths, Trunklip® and Trayklip® can be easily and quickly positioned from the outside. Making installations much faster, this also enhances on-site safety when working at height and provides a much more user-friendly solution to the contractor.

## Why use Trunklip® & Trayklip®?



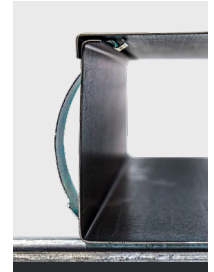
**Secures trunking & tray**  
Quickly & efficiently every time



**Greater on-site safety**  
No need for drills or spring nuts, just locate & clip



**Innovative H-frame design**  
Product sits within channel for easy positioning



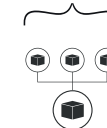
**Clean & tidy finish**  
Trunklip® allows for trunking lids to be fixed securely



Increased on-site safety



Work with most major brands



Reduced on-site storage & inventory



Sizes to suit 2"-4" height trunking

# Where can Trunklip® & Trayklip® be installed?

## Trunklip® | Internal Installations

Manufactured from spring steel and featuring a BZP finish, Trunklip® is suited to interior applications only.

With trunking almost exclusively installed within buildings, the risk of Trunklip® being exposed to the elements and potential rusting or failure is therefore extremely minimal.

For full technical information, please see the information to the right. Full certification is available on request.

## Trayklip® | Internal & External Installations

Manufactured from spring steel, Trayklip® features a Delta RoHS zinc flake finish, a similar solution to our external Rapid Saddle® product, designed for both internal and external applications.

Whereas trunking is commonly installed internally, cable tray is often utilised externally and the need for a more robust and corrosion-resistant finish was required. Our Delta RoHS Trayklip®'s are manufactured for all weather, minimising the risk of failure and ensuring the product is fit-for-purpose for many years to come.

For full technical information, please see the information to the right. Full certification is available on request.

## Technical Information: Trunklip® & Trayklip®

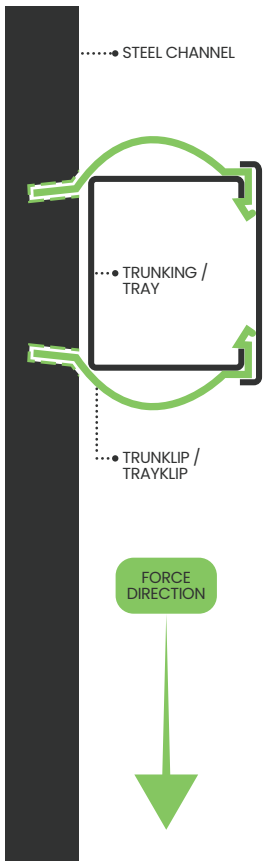
Trunklip®		Trayklip®	
Manufactured from 65mm spring steel	Features a Bright Zinc Plated finish & suited to internal applications	Manufactured from 65mm spring steel	Features a Delta RoHS zinc flake finish & suited to both internal & external applications
Designed to ensure functionality with most UK brands	Available sizes: 2"   3"   4" (to suit 50mm, 75mm, 100mm trunking heights respectively)	Designed to ensure functionality with most UK brands	Available in sizes to suit both medium tray returns and heavy tray returns

**Specification** | To specify, please state:

**Trunklip® / Trayklip™**  
as **Demon Cato by Metpro Group.**

# Technical Information: Load Testing Results

## Slip Load Test



A point load was applied to our Trunklip® & Trayklip® test samples as shown in the diagrams to the left and right.

As part of these tests, multiple samples were used to measure both the 1mm slip and pull out, identifying the weight at which each product failed.

Based on our data, we have provided the Safe Working Load's for each product using our 1mm slip and pull out results only, using a safety factor of 3.

Our tests were conducted using Metpro 2.5mm heavy gauge steel channel in conjunction with steel trunking from a leading UK manufacturer.

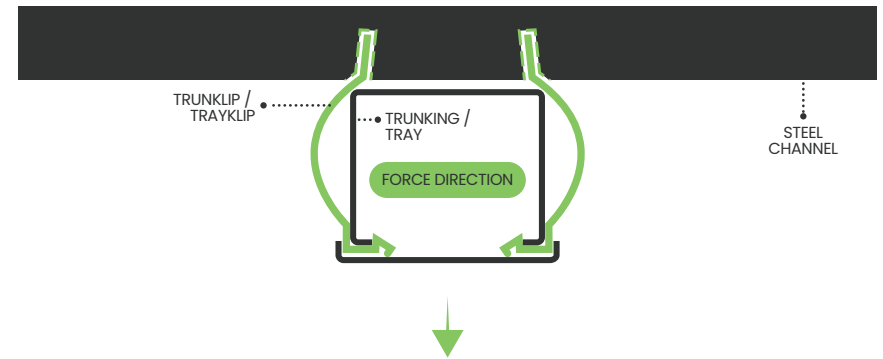
### Trunklip® Slip SWL's

TK2K (2" Trunklip®)	TK3K (3" Trunklip®)	TK4K (4" Trunklip®)
9.00kg	8.00kg	7.00kg

### Trayklip® Slip SWL's

MCTMK (for Medium Return Cable Tray)	MCTHK (for Heavy Return Cable Tray)
9.00kg	9.00kg

## Pull Out Load Test



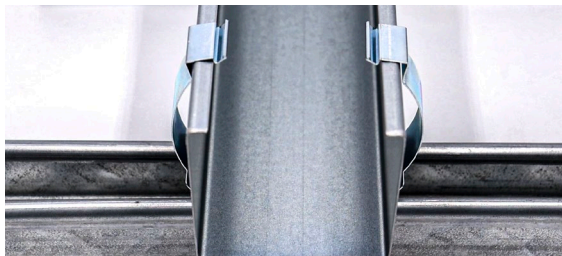
### Trunklip® Pull Out SWL's

TK2K (2" Trunklip®)	TK3K (3" Trunklip®)	TK4K (4" Trunklip®)
63.33kg	43.67kg	45.00kg

### Trayklip® Pull Out SWL's

MCTMK (for Medium Return Cable Tray)	MCTHK (for Heavy Return Cable Tray)
26.67kg	16.67kg

# How Trunklip® & Trayklip™ are installed



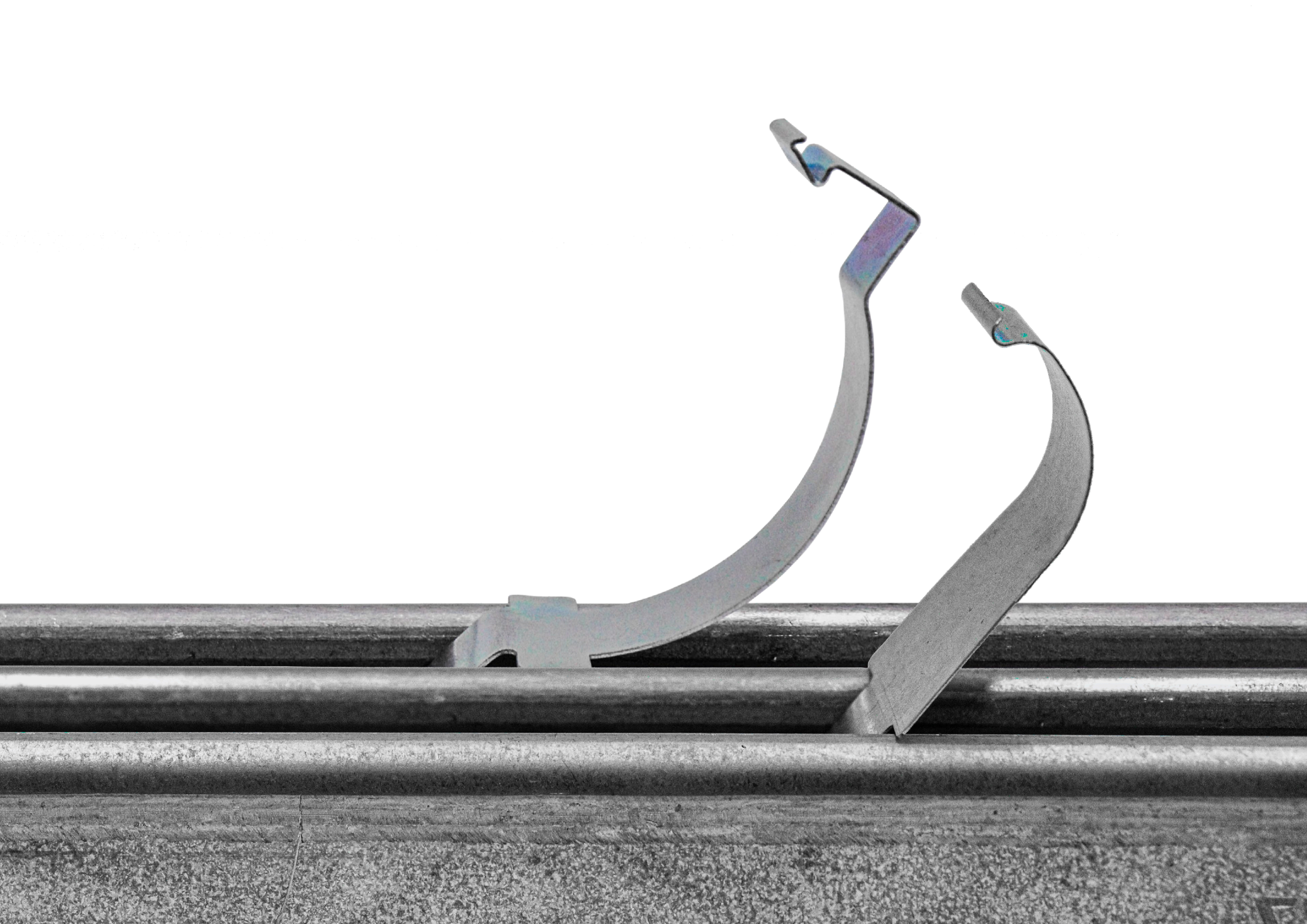
## Luckins TSI Codes

### Trunklip®

Demon Cato Code	Product Description	TSI Code
TK2K	2" Trunklip®	435985376
TK3K	3" Trunklip®	435985389
TK4K	4" Trunklip®	435985392

### Trayklip®

Demon Cato Code	Product Description	TSI Code
MCTMK	Medium Return Trayklip®	435985402
MCTHK	Heavy Return Trayklip®	435985363



---

# EASYFIT

---

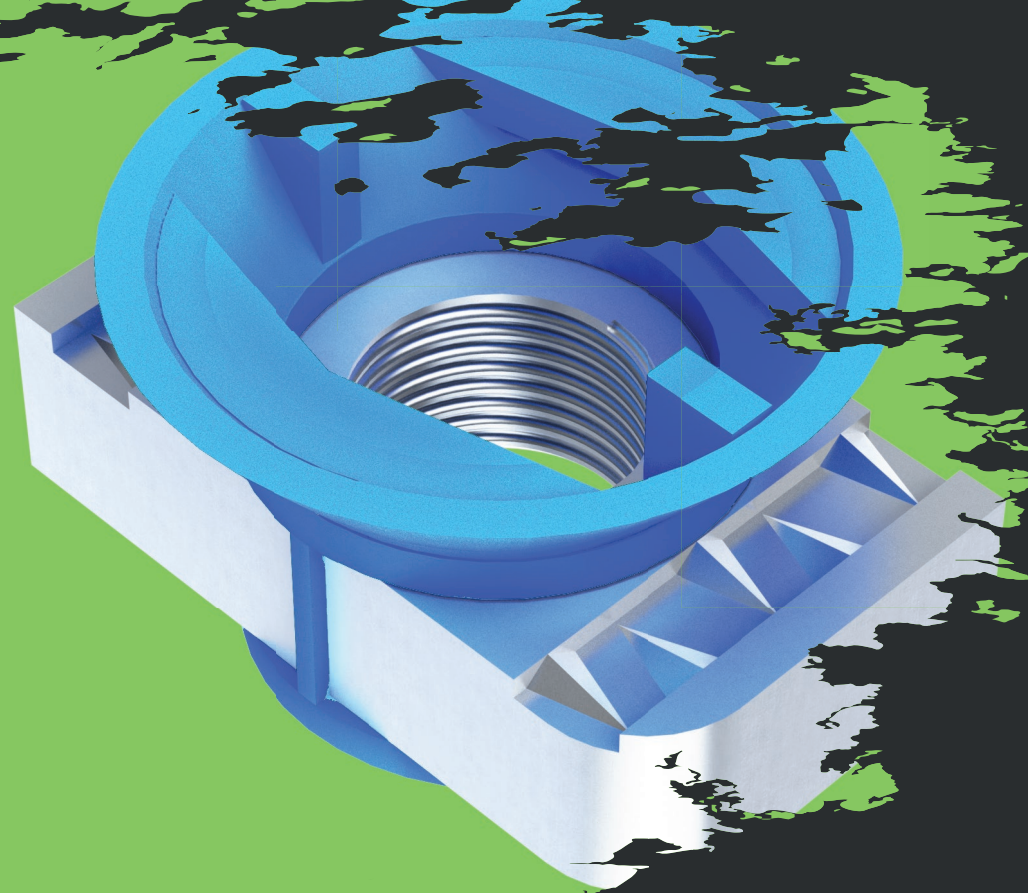
## CHANNEL NUTS

Channel nuts. **With a twist.**

Over

**30%**

Labour Savings



## What are Easyfit Channel Nuts?

A unique steel channel nut designed to offer faster, safer installations.

Removing the need for springs, our Easyfit Channel Nuts have been conceived and manufactured with the contractor in mind.

Featuring a nylon jacket and suited to all strut depths, these design-registered and innovative channel nuts offer one-handed installations, easy positioning, and no more need to untangle springs; an ideal solution for working at height.

## Why use Easyfit Channel Nuts?



**One-handed installations**  
Built-in finger grips designed for simple installations



**Slide & hold design**  
Easyfit's nylon jacket allows for easy positioning



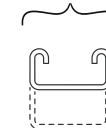
**No springs to untangle**  
Enhancing on-site safety, especially when at height



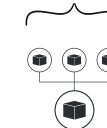
**Compliant to BS6946:1988**  
In line with standard channel nuts



Increased on-site safety



Sizes to suit all strut depths



Reduced on-site storage



Exclusive to Demon Cato

# Where can Easyfit Channel Nuts be installed?

## Internal Installations

Featuring a Bright Zinc Plated (BZP) finish across the range, Easyfit Channel Nuts are designed for internal use.

### External installations solution

Should there be a requirement however for this product in an external application, we can supply a Hot Dip Galvanised version on request which will be subject to slightly longer leadtimes.

Full certification is available on request.

**Specification** | To specify, please state:

**Easyfit Channel Nuts**  
as **Demon Cato** by Metpro Group.

## Technical Information: Easyfit Channel Nuts

Manufactured from:  
Steel (Nut)  
Nylon 6 (jacket)

Manufactured to comply with BS6946:1988 (Metal Channel Support Systems)

Available sizes:  
- M6  
- M8  
- M10  
- M12

Steel nut features a BZP finish

Easily identifiable sizes based on cone colour:  
- M6 (Yellow)  
- M8 (Grey)  
- M10 (Blue)  
- M12 (Red)

Each unit require only a 90° turn to secure within channel lengths

## Technical Information: Slip & Pull Out Test Results

SKU	Size	SWL (kN)	SWL (kN)
CN6	M6	0.7	4.9
CN8	M8	1.3	5.4
CN10	M10	1.7	7.0
CN12	M12	3.5	8.9

All loading data is based on using Metpro 2.5mm heavy gauge steel channel, and applying a Safe Working Load factor of 3.



## How Easyfit Channel Nuts are installed



## Luckins TSI Codes

### Easyfit Channel Nuts

Demon Cato Code	Product Description	TSI Code
EF6	M6 Easyfit Channel Nut	436011346
EF8	M8 Easyfit Channel Nut	436011359
EF10	M10 Easyfit Channel Nut	436011362
EF12	M12 Easyfit Channel Nut	436011375

# Additional Services & Support



## Powder Coating

Aesthetics and trends continue to shift with more and more cable management now on show throughout supermarkets, shopping centres and coffee shops.

We can produce & supply product in line with your specifications to any RAL colour to achieve the desired finish.



## Availability

Demon Cato products are stocked in-depth and typically available on a next day delivery (conduit tube 3-5 days).

All products are available through our network of Partners, or your preferred local wholesaler, and our team can discuss your requirements directly with a chosen supplier on your behalf if required.



## Logistics Support

Working across the globe since 1995, we have been able to tweak and develop a slick logistics operation with an unwavering commitment to stock.

Our team can work directly with your chosen supplier on a logistics schedule that suits your needs, with direct to site deliveries also an option.



## Technical Support

With a combined experience of over 250 years across engineering, product design, logistics and application, our team are available Monday to Friday from 8.30am - 5pm to provide any technical advice you may require.



## BIM Ready

All Demon Cato products are BIM ready with Revit files available for download on our website:

[www.metpro.co.uk](http://www.metpro.co.uk)



## Quality Control

Product quality has always been at the very top of our agenda.

Combining dedicated overseas engineers with our UK quality laboratory, we ensure our products are always fit-for-purpose.



## Carbon Neutral

We currently operate in compliance with the Environmental Protection Act 1991 however, we realise we can do much more.

Having joined with Smart Carbon in December of 2021, we are now committed to significantly reducing our carbon footprint and offsetting both our business emissions, as well as those of our staff.



## Fully Accredited

Our in-house UK quality laboratory utilises equipment which is fully UKAS Accredited where applicable.

Ensuring quality is not limited to only our products, we are also certified to ISO9001:2015 by ACS Registrars.

## Frequently Asked Questions

### Does Conlok® comply to the British Standard for earth continuity?

Yes. All Conlok® products fully comply to the relevant standard and indeed exceeded the test requirements.

### Are there any vibration issues with Conlok® grub screws coming loose?

No. Demon Cato commissioned a full test with the results being confirmed as 'concluded successfully'. If you would like a copy of the report, please do not hesitate to request this and we will be happy to assist.

### Do Demon Cato supply male & female Conlok® adaptors?

No. Demon Cato manufactures and supplies female adaptors. However, with the addition of a standard conduit nipple, these can become male adaptors.

### I have always used hot dip galvanised products, how will Delta Protekt® 120 compare with this?

Used on our external Rapid Saddle® products, Delta Protekt® 120 was originally used on components within offshore wind turbines where product failure could be catastrophic. This specialist finish was designed to offer incredibly high levels of corrosion resistance without clogging up any screw threads and we are happy to supply our certification to 500+ hours of corrosion resistance on request.

### Where can I install Rollatray®?

Rollatray® has been designed for installation in any application with a solid surface. Underfloor applications are particularly ideal along with multi-storey buildings, riser mains, data centres and more.

### Are Demon Cato products on Luckins?

Yes. Our full product offering is available to view on the Luckins Database.

### Do I need an online account to access data sheets and BIM files?

No. To make things as simple as possible, all our data sheets and BIM Revit files are available for download without the need for an account.

## Contact Us & Demon Cato Online

We would welcome the opportunity to discuss how Demon Cato products can be of benefit to your future projects.

Please contact our team using the following information:



Call us: **0121 552 2100**



Email us: **sales@demoncato.co.uk**

### Demon Cato Online

If you are looking for immediate information from stock levels to technical data, our website acts as your 24/7 technical portal.

Head over to [metpro.co.uk/demoncato](https://metpro.co.uk/demoncato) or scan the QR code below to access:

**Live stock levels | Data sheets | BIM Revit files | SKU information | Pack quantities**



Call us: **0121 552 2100**



Email us: **sales@demoncato.co.uk**



Visit us: **metpro.co.uk/demon-cato**

## Demon Cato Manufacturing Capabilities: **An Overview**

In addition to our standard Demon Cato range, we work with our OEM customers on the design, manufacture and logistics of their bespoke components.

Specialists in a wide variety of manufacturing processes and disciplines,  
**we manufacture your products  
to your specification.**

To understand our manufacturing capabilities, please see an overview to the right and feel free to contact us for more information at any time.

To discuss your bespoke requirements or if you have an innovative product you would like to discuss, simply send a Request for Quotation (RfQ) to **enquiries@demoncato.co.uk**.

Alternatively, please call us our team on **0121 552 2100** to arrange a face-to-face no obligation meeting.

We look forward to hearing from you and understanding how Demon Cato can support your business.

# Demon Cato Manufacturing Capabilities:

## Our Manufacturing Capabilities



### Casting



Investment Casting  
Gravity Die Casting  
Low Pressure Casting  
High Pressure Casting  
Centrifugal Casting  
Continuous Casting  
Sand Casting



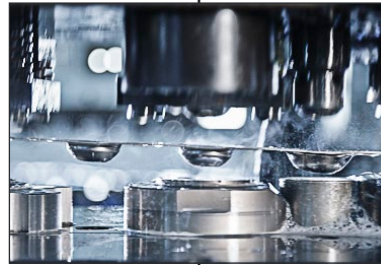
### Forging



Open Die/Hand Forging  
Impression Die Forging  
Press Forging  
Upset Forging  
Roll Forging  
Net Shape Forging  
Near-Net Shape Forging



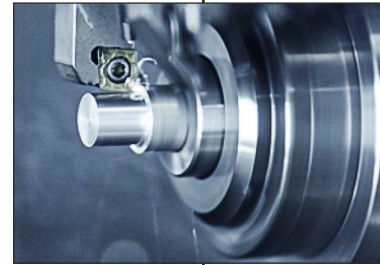
### Pressing & Stamping



Press Brake Machine  
Rolling Press Machine  
Punch Machine  
Laser Cutting  
Progressive Punch Machine



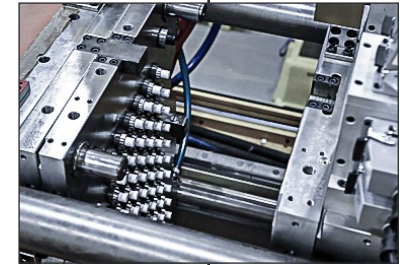
### Turning & Milling



Traditional Turning & Milling  
Multi-Axis CNC Turning & Milling  
Gear Cutting  
Broaching  
Cylindrical Turning & Milling  
Surface Turning & Milling  
Grinding



### Injection Moulding



High & Low Pressure Moulding  
Blow Moulding  
Compression Moulding  
Film Insert Moulding  
Gas Assist Moulding  
Rotational Moulding  
Foam Moulding  
Vacuum Forming  
Extrusion Moulding  
Powder Metallurgy



Copyright Metpro Ltd 2024