



# CONLOK

Clean Room

Traditional. **Upgraded.**

## Technical Submission

Declaration of Conformity	Pages 2-3
Grub Screw Torque Test	Page 4
FAQs	Page 5
Benefits	Page 6
Where Conlok is Installed	Page 7

**DEMON CAT** 

A **metpro** Brand  
Group

**Innovation & Excellence in Manufacturing**

The Conlok Clean Room Conduit System:

**BS EN 61386-1:2008+A1:2019**

**BS EN 61386-21:2021+A11:2021**

## Declaration of Conformity

Demon Cato (part of Metpro Group Limited) declare under sole responsibility that:

Conlok Clean Room Steel Conduit Tube, Malleable Boxes & Accessories are produced to BS EN 61386-21:2021+A11:2021 (Conduit Systems for Cable Management) and comply with the requirements of Class 4 corrosion resistance. Further to the above, Conlok boxes can be rated to an Ingress Protection (IP) Resistance of IP30 when used in conjunction with Class 4 conduit tube, manufactured to the requirements of BS EN 61386-1:2008+A1:2019.

Conlok Clean Room Steel Conduit Tube is manufactured from clean room compliant material, with all Clean Room Conlok Malleable Boxes & Accessories featuring a bespoke finish that effectively encapsulates the zinc whiskers and renders them harmless.

### Relevant SKUs



### Conlok Malleable Boxes

#### Terminal

Size	Code
20mm	CL1G CLEAN
25mm	CL8G CLEAN

#### Through

Size	Code
20mm	CL2G CLEAN
25mm	CL9G CLEAN

#### Angle

Size	Code
20mm	CL3G CLEAN
25mm	CL10G CLEAN

#### Tee

Size	Code
20mm	CL4G CLEAN
25mm	CL11G CLEAN

#### Intersection

Size	Code
20mm	CL5G CLEAN
25mm	CL12G CLEAN

#### Branch U

Size	Code
20mm	CL6G CLEAN
25mm	CL13G CLEAN

#### Branch Y

Size	Code
20mm	CL7G CLEAN
25mm	CL14G CLEAN

#### Terminal c/w 25mm Hole in Base

Size	Code
20mm	CL15G CLEAN

#### Terminal Back Outlet

Size	Code
20mm	CL16G CLEAN

# Demon Cato Certifications: **Conlok Clean Room**

## Clean Room Steel Conduit Tube

Size	Code
20mm x 3mtr	CLGCCLEAN20
25mm x 3mtr	CLGCCLEAN25

## Clean Room Accessories

### Solid Coupler

Size	Code
20mm	CL20GCCLEAN
25mm	CL25GCCLEAN

### Flanged Coupler

Size	Code
20mm	CL20FCCLEAN
25mm	CL25FCCLEAN

### Adaptor

Size	Code
20mm	CL20GACLEAN
25mm	CL25GACLEAN

### Solid Bend

Size	Code
20mm	CL20MBCLEAN
25mm	CL25MBCLEAN

Signed on behalf of Demon Cato  
A Metpro Group Brand



**Mr M Holmes**  
**Product & Vendor Development Manager**

Date of Issue

25th January 2022

# Threaded Grub Screw Torque Test

## DEMON CATO

A metpro Group Brand

Metpro Group Limited  
Unit 4 Summit Crescent  
Smethwick  
West Midlands  
B66 1BT

T: 0121 552 2100  
E: sales@metpro.co.uk  
W: metpro.co.uk

### Threaded Grub Screw Torque Test

M4 Grub Screws used in the Conlok range of products meet the requirement of 1.2Nm of torque, as set out in BS EN 61386-21:2021+A11:2021, applied using a suitable torque screwdriver or wrench, applying a torque of 1.2Nm without sudden and jerky movements.

After the test, there shall be no damage sustained by the screw or nut such as breakage of the screw or damage to the thread that will impair further use of the screw or nut.

#### **Testing Tool**

Teng 1492SD Torque Screwdriver with a torque range of 1-5Nm.

<b>Products Tested</b>	<b>Torque Specified</b>	<b>Torque Achieved</b>	<b>Result</b>
1. Conlok Galvanised End Box	1.2Nm	2.0Nm	Pass
1. Conlok Galvanised End Box	1.2Nm	2.0Nm	Pass
1. Conlok Galvanised End Box	1.2Nm	2.0Nm	Pass
1. Conlok Galvanised End Box	1.2Nm	2.0Nm	Pass
1. Conlok Galvanised Angle Box	1.2Nm	2.0Nm	Pass
1. Conlok Galvanised Angle Box	1.2Nm	2.0Nm	Pass
1. Conlok Galvanised Angle Box	1.2Nm	2.0Nm	Pass
1. Conlok Galvanised Angle Box	1.2Nm	2.0Nm	Pass
1. Conlok Galvanised Coupler	1.2Nm	2.0Nm	Pass
1. Conlok Galvanised Coupler	1.2Nm	2.0Nm	Pass

#### **Date Tested**

11<sup>th</sup> November 2008

Signed on behalf of Demon Cato:

.....  
Mr. Michael Holmes  
Product & Vendor Development Manager

## **What British Standard does the Conlok system comply with?**

Conlok complies with BSEN61386-21:2021+A11:2021, the same standard as traditional steel conduit systems.

## **Does Conlok comply to the British Standard for earth continuity?**

Yes. All Conlok products fully comply to the relevant standard and indeed exceeded the requirements.

## **Are there any vibration issues with Conlok grub screws coming loose?**

No. Conlok grub screws are manufactured from 12.9 Grade steel with a cup pointed screw, designed to 'bite' through the galvanising and into steel conduit lengths.

## **What strength do Conlok grub screw's have to attach to steel conduit?**

Conlok grub screws achieved a mass of 450N over a 48 hour period, confirming they are more than capable of carrying out the task at hand.

## **Do Demon Cato supply male & female Conlok adaptors?**

No. Demon Cato manufacture a dedicated female adaptor only. However, with the addition of a standard conduit nipple, Conlok female adaptors can be used as male adaptors.

## **How do you know if an electrician has tightened the grub screw?**

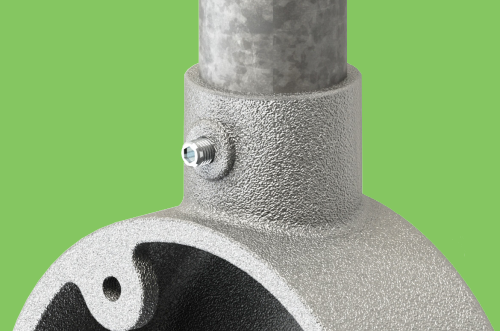
If necessary, each Conlok box or accessory can be marked using an indellible marker, as would be done with a distribution breaker, to show it has been installed & tightended.

## **Are Conlok products on Luckins?**

Yes. Our full product offering is available to view on the Luckins Database.

## **Do I need an online account to access Demon Cato data sheets and BIM files online?**

No. To make things as simple as possible, all our data sheets and BIM Revit files are available for download without the need for an account at [www.metpro.co.uk](http://www.metpro.co.uk).



Up to **75%** Labour Savings

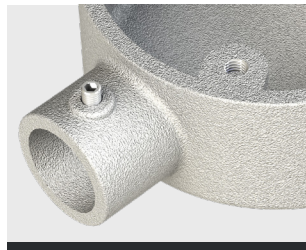


## The Highlights



### No need to thread conduit tube

With Conlok's unique built-in grub screw



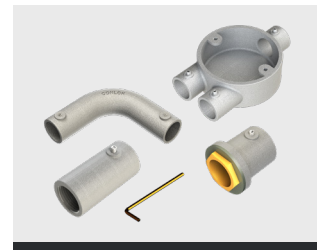
### Clean Room system

Purpose-designed for clean room & specialised installations



### Fast-fix solution

Ideal for major projects where cost & safety are critical



### Full range of accessories

All of the essential items for quick installations



Increased on-site safety



Compliant to the latest standards



Reduced on-site storage



Used on major UK projects

Manufactured from clean room compliant material (steel conduit tube) and malleable iron (steel conduit boxes & accessories)-

Conforms to BS EN 61386-1:2008+A1:2019 (Conduit Systems for Cable Management)

Conforms to BS EN 61386-21:2021+A11:2021 (Conduit Systems for Cable Management - Rigid Conduit Systems)

Manufactured in accordance with the Low Voltage Directive 2014/35/EU

Conlok grub screws are manufactured from Grade 12.9 Steel

Unthreaded spouts offer enhanced corrosion resistance against more traditional products

# Where Conlok is installed

A small selection of major UK projects using Conlok

**Sir Chris Hoy Velodrome,**  
Glasgow



**Tesco Extra,**  
Middlesbrough

**BBC Fire & Security,**  
Derby

**HMP Sites;**  
West Lothian  
Aberdeen  
Bedford  
Addiewell

**Edinburgh Airport,**  
Edinburgh

**Kendrew Barracks,**  
Oakham

**Pure Gym,**  
Bath Spa

**Proctor & Gamble,**  
Manchester

**Amazon,**  
Dublin

**Tees Rep  
Biomass Power  
Station,**  
Glasgow

**Heathrow T2,**  
Heathrow

**Wellington Barracks,**  
Oakham



**MOD Bicester,**  
Oxfordshire



DEMON CAT®

## STEEL CONDUIT SYSTEM

**SEVEN YEAR  
EXTENDED WARRANTY  
AVAILABLE**

Contact us to  
find out more



Copyright Metpro Group 2022