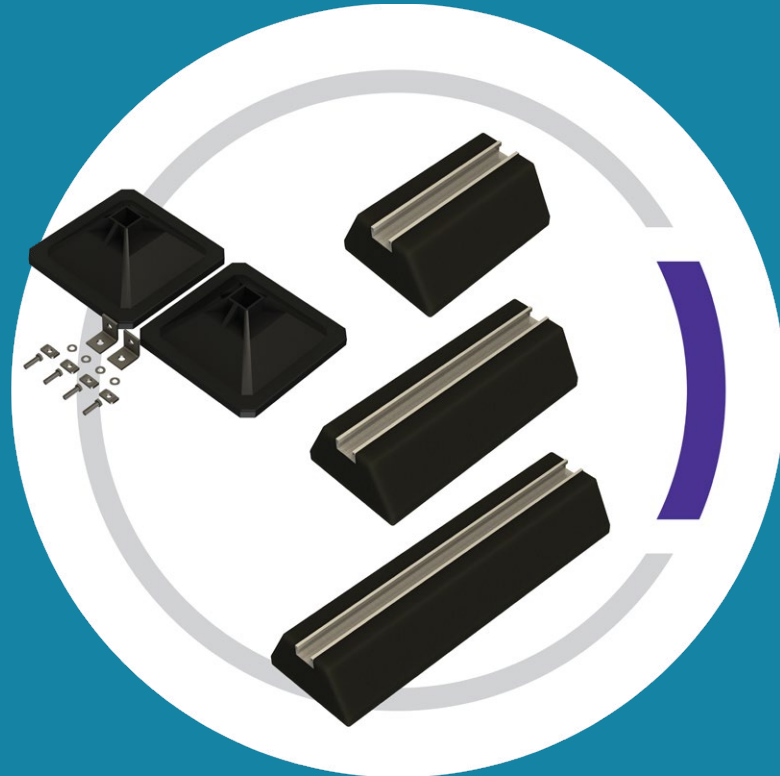


FLAT FOOT

BY
metpro®



H FRAME KITS

OFFERS A QUICK
FIX SOLUTION
FOR CABLE
MANAGEMENT

IDEAL FOR
DUCTING &
PIPEWORK



ECO RANGE

MANUFACTURED
FROM RECYCLED
SBR RUBBER

PRACTICAL
& VERSATILE
SOLUTION FOR
PIPEWORK &
CABLE TRAYS

41X21MM
'BONDED' BUILT-IN
CHANNEL

MAXIMUM VERSATILITY, MINIMUM FOOTPRINT

INNOVATION, VALUE & QUALITY, IN ALL THAT WE DO.

SUPPLIED BY

FLAT FOOT

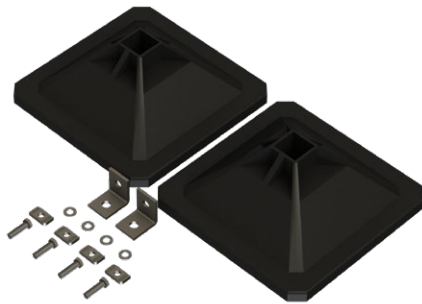
Our brand new Flat Foot range offers ideal solutions for ducting, pipework, cable trays and HVAC installations including our environmentally-friendly Eco Range

H FRAME KITS

Size	Code	Pack
305mm	MP305	1
Strut not included		

Offers a quick fix solution for cable management

Ideal for ducting & pipework



ECO RANGE

Size	Code	Pack
250mm x 180mm	MP250160	1
400mm x 180mm	MP400240	1
600mm x 180mm	MP600450	1
1000mm x 180mm	MP1000645	1

Manufactured from recycled SBR rubber

Practical & versatile solution for pipework & cable trays

Features 41x21mm 'bonded' built-in channel

