

CABLE MANAGEMENT SYSTEMS FOR DATA CENTERS



Cable Management Solutions

CABLE MANAGEMENT SYSTEMS
FOR DATA CENTERS

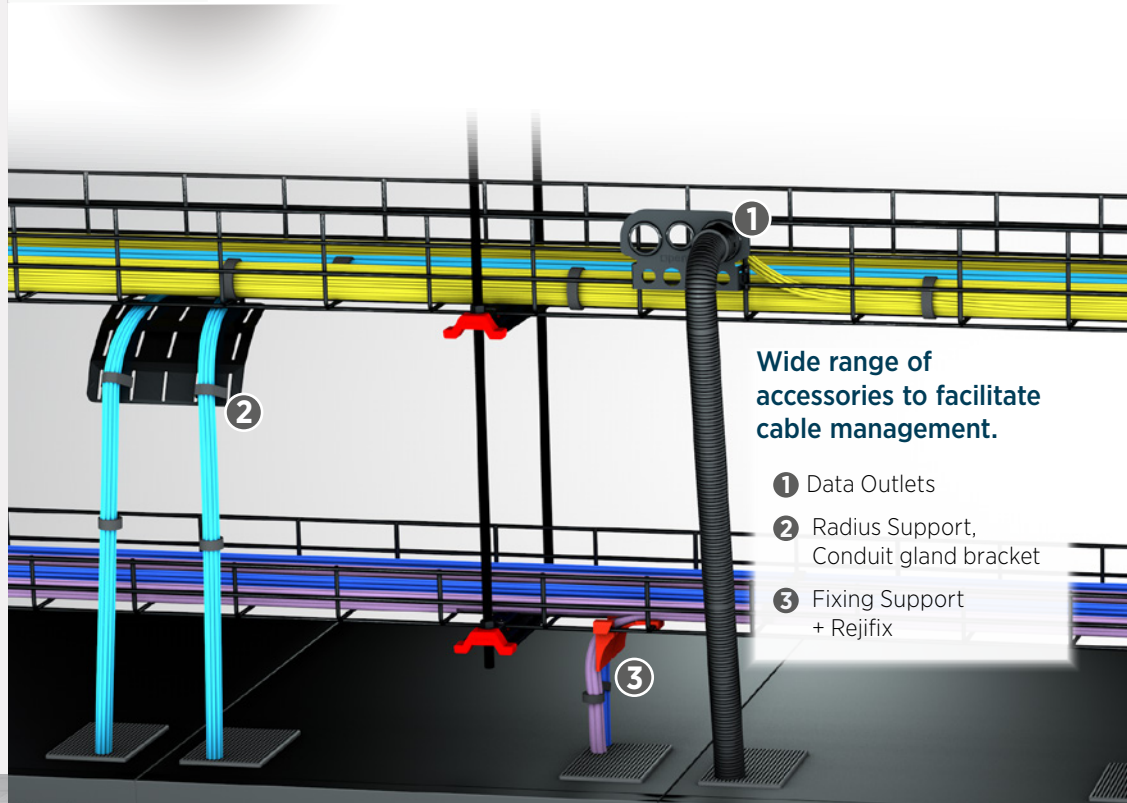


www.pemsa-rejiband.com



The growth of the Internet of Things (IoT) and Industry 4.0, the demand for higher network speeds and the evolution of emerging technologies, are all developments that require the network to extend to the edge and closer to the end user. These events inspired Pemsa Cable Management to develop a product solution to improve the safety, flexibility and efficiency of cable support and management in such technical and demanding environments as Data Centers.

SECURITY AND FLEXIBILITY



Wide range of accessories to facilitate cable management.

- 1 Data Outlets
- 2 Radius Support, Conduit gland bracket
- 3 Fixing Support + Rejifix



The features of the Rejiband® and Rapide BLACK C8 wire mesh tray make it one of the most suitable systems in today's Data Center projects.

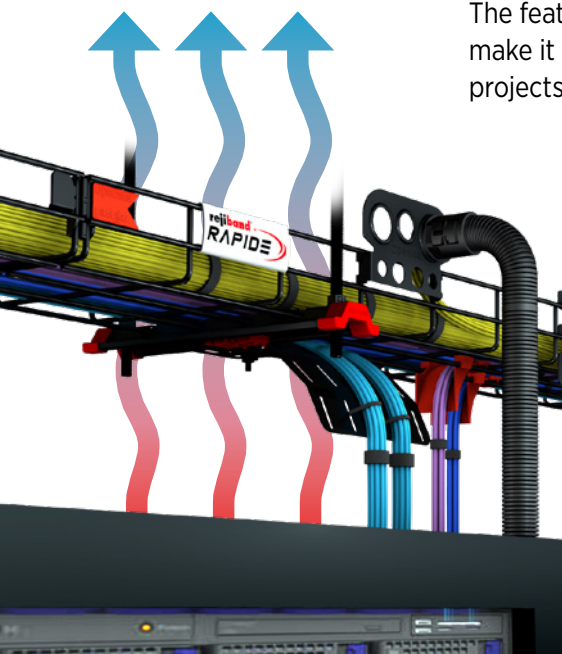


The **open structure** of Rejiband® achieves perfect visibility of the cables along their entire route, optimising their organisation and maintenance, **improving ventilation, dissipation and the overall energy efficiency of the Data Centre installation.**

The **resistance and flexibility of Rejiband®** allows maximum use of its capacity and better adaptation to the route of the installation, facilitating subsequent modifications.

Wide range of accessories that favour cable management.

Smooth and homogeneous finish with a safety edge that protects the telecommunications cabling.

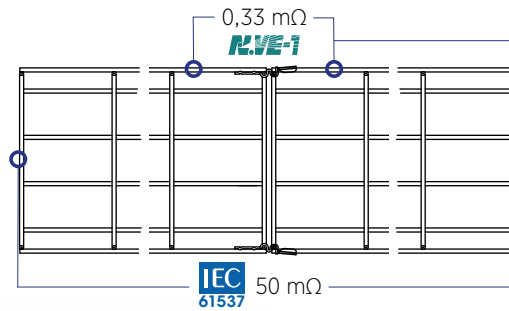




Electrical conductivity

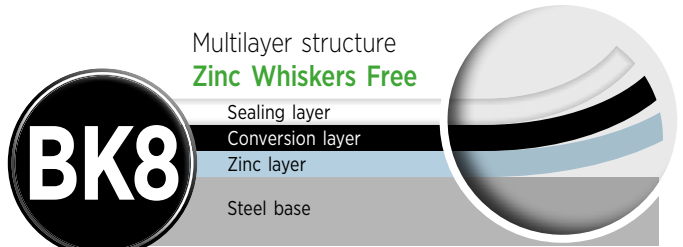
Compliant with the requirements of the international product standard IEC61537 and the American standard NEMA VE-1.

Equipotential connection with other conductive elements, as well as the evacuation of induced currents, and in the event of a fault, to Earth.



Protection against Zinc whiskers

The phenomenon known as zinc whiskers is caused by microscopic filaments that appear in certain zinc coatings which, when detached, can interact with electronic equipment. The Black C8® system is a multilayer coating, whereby its composition intrinsically blocks the appearance of these zinc filaments.



BK8. Complete high strength system

High performance coating against corrosion. Tested with cyclic tests, which reproduce the real behaviour of the materials in a humid and aggressive environment, with a result of more than 2,600 hours of performance and 16 cycles, according to ISO 11997-1 standard.

Fire Resistance E90 Certification. DIN 4102-12



Reijband® is non-combustible, does not cause toxic fumes, does not spread fire, and maintains its load-bearing strength at 1000°C.

A system with all the quality and safety guarantees



Underwriters Laboratories (UL):
Certified E-305934
(Safety use in USA y CA),
according to NEC / NFPA 70
Regulation and NEMA VE-1
standard.



AENOR Internacional:
AENOR N mark certificate,
according to IEC 61537.
Reijband®, N° 030/002090
Reijband Rapide®, N°
030/002503
Supports, N° 030/002089



IECEE CB SCHEME
Reijband Rapide®
Certificate No. ES-2265A1,
according to IEC 61537.



EU Declaration of Conformity
(CE marking),
according to UNE-EN 61537
and Low Voltage Directive
2014/35 / EU.



Low Voltage Directive (LVD): 2014/35 / EU.



RoHS Directive: 2011/65 / EU.











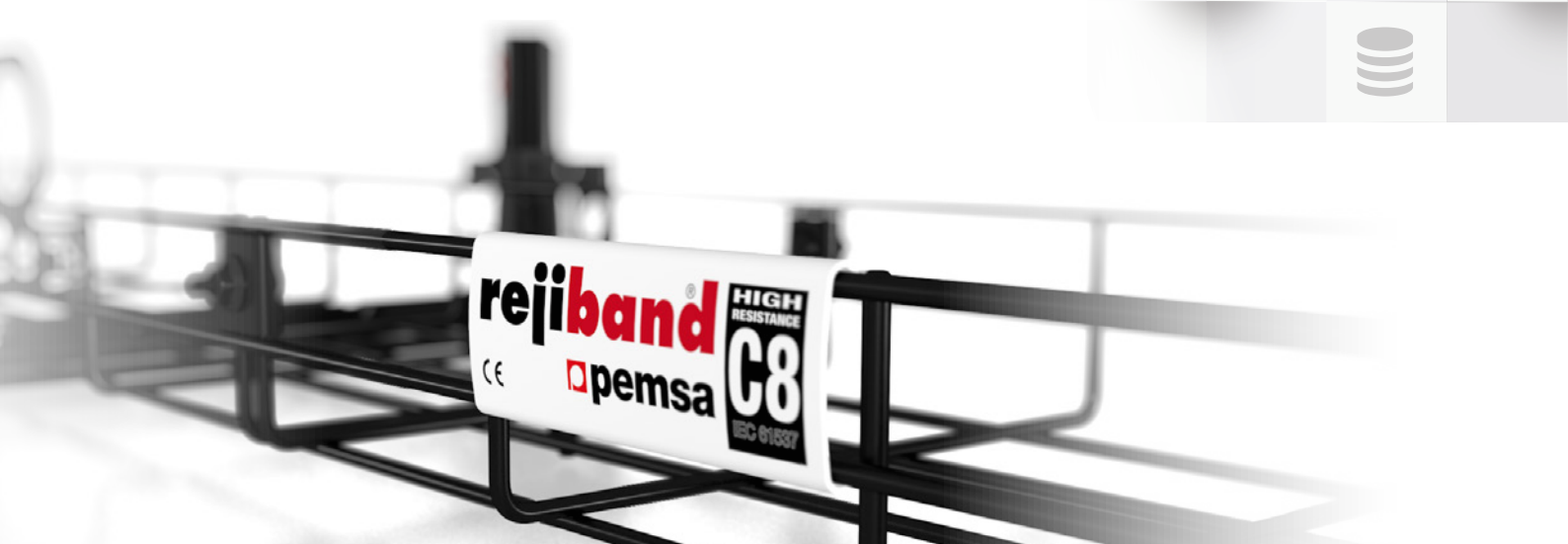
REACH Regulation: 1907/2006.



COMPLETE SYSTEM FOR CABLE MANAGEMENT

The BK8® system is made up of a complete range of accessories with the same characteristics. It has a wide variety of supports, which adapt to any load requirement and to the routing of the installation, with all the advantages and guarantee of PEMSA's Rejiband® system.

	cable trays		Unions					
								
Dimensiones								
60x60-2	60582060	60282060				-	-	-
60x100	60582100	60282100				63082104	-	2x 67080046
60x150	60582150	60282150	2x 64080030	2x 64080061		63082154	-	2x 67080046
60x200	60582200	60282200				63082204	2x 62086021	2x 67080046
60x300	60582300	60282300				63082304	2x 62086021	-
60x400	60582400	60282400	3x 64080030	3x 64080061		63082404	2x 62086021	-
60x450	60582450	60282450				63082504	2x 62086021	-
60x500	60582500	60282500	4x 64080030	4x 64080061		63082504	2x 62086021	-
60x600	60582600	60282600				63082604	2x 62086021	-
100X100	60583100	60283100				63082104	-	-
100X150	60583150	60283150	2x 64080030	2x 64080061		63082154	-	-
100X200	60583200	60283200			64080072	63082204	2x 62086021	-
100X300	60583300	60283300	3x 64080030	3x 64080061		63082304	2x 62086021	-
100X400	60583400	60283400				63082404	2x 62086021	-
100X450	60583450	60283450				63082504	2x 62086021	-
100X500	60583500	60283500	4x 64080030	4x 64080061		63082504	2x 62086021	-
100X600	60583600	60283600				63082604	2x 62086021	-
150X200	-	60286200				-	-	-
150X300	-	60286300	5x 64080030	5x 64080030		-	-	-
150X400	-	60286400				-	-	-
150X450	-	60286450				-	-	-
150X500	-	60286500	6x 64080030	6x 64080030		-	-	-
150X600	-	60286600				-	-	-



Support systems

Ceiling support				Wall support			Floor support	Other accessories	
Central Click Suspension	Side Support 60	Threaded Rod	Omega Ceiling Bracket	Pendant Omega (*) + Support	Omega SPLUS Bracket	Medium Duty Cantilever RPLUS	Solar Totem	Cover	
-	62081060	67080045	-	62061404	62081154	62085103	1x 82003450	82002531	
67080043	62081060		62022104	62061404	62081104	62085103	1x 82003450	82002532	
67080043	62081060		62022154	62061404	62081154	62085153	1x 82003450	82002533	
67080043	-		62022204	62061404	62081204	62085203	1x 82003450	82002534	
-	-		62022304	62061404	62081304	62085303	2x 82003450	82002535	
-	-		-	62061404	-	62085403	2x 82003450	82002536	
-	-		-	62061404	-	62085503	2x 82003450	-	
-	-		-	62061404	-	62085503	2x 82003450	82002537	
-	-		-	62061404	-	62085603	2x 82003450	82002538	
-	-		-	62022104	62061504	62081104	62085103	1x 82003450	82002532
-	-		-	62022154	62061504	62081154	62085153	1x 82003450	82002533
-	-		-	62022204	62061504	62081204	62085203	1x 82003450	82002534
-	-		-	62022304	62061504	62081304	62085303	2x 82003450	82002535
-	-		-	-	62061504	-	62085403	2x 82003450	82002536
-	-		-	-	62061504	-	62085503	2x 82003450	-
-	-		-	-	62061504	-	62085503	2x 82003450	82002537
-	-		-	-	62061504	-	62085603	2x 82003450	82002538
-	-		-	-	62061604	-	62085203	1x 82003450	82002534
-	-		-	-	62061604	-	62085303	2x 82003450	82002535
-	-		-	-	62061604	-	62085403	2x 82003450	82002536
-	-	-	-	62061604	-	62085503	2x 82003450	-	
-	-	-	-	62061604	-	62085503	2x 82003450	82002537	
-	-	-	-	62061604	-	62085603	2x 82003450	82002538	

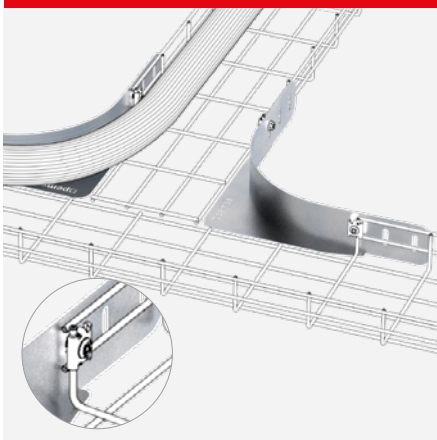
(*) Height, Length of pendant. Correspondences: 60 - 400 / 100 - 500 / 150 - 600.



CABLE MANAGEMENT ACCESSORIES

The BK8 System has a wide range of accessories that facilitate cable management. They enable safe and appropriate cable management and routing for the connection of the different equipment in a Data Centre.

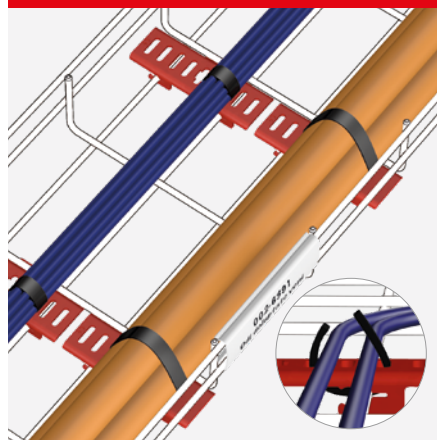
RADIUS SUPPORT



Features

- Maximum protection of the wiring in the bends or tees.
- Suitable for cable trays with heights of 60 and 100mm.
- Available in EZ and BK8 Protection Systems.

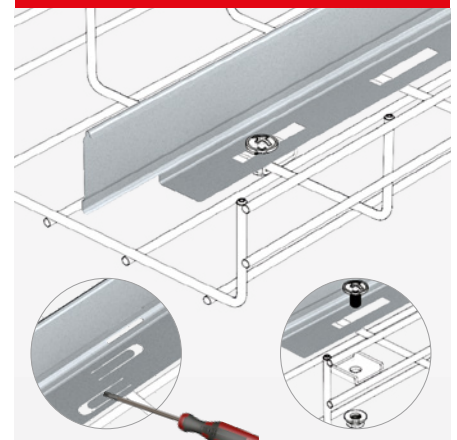
FIXING SUPPORT + REJIFIX



Features

- Allows a quick and flexible way to clamp cables.
- Can be placed in the full width of the tray.
- Fixing by quick click system.
- Economical and reusable system.

CLICK DIVIDER



Features

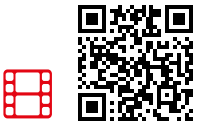
- Fixing by quick mount click system.
- Allows separation of cable circuits, improving their management and maintenance.
- Encourages shielding between data and power cables within the same installation.

┌┐ • ⊗ 60-100 • ◀▶ 60-600			
Ⓢ	Ref	kg/u	📦
EZ	82003330	0,366	1
GC	82003332	0,366	1
BK8	Consultar	0,366	1

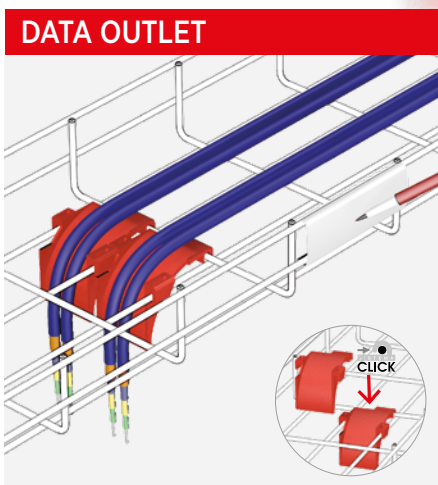
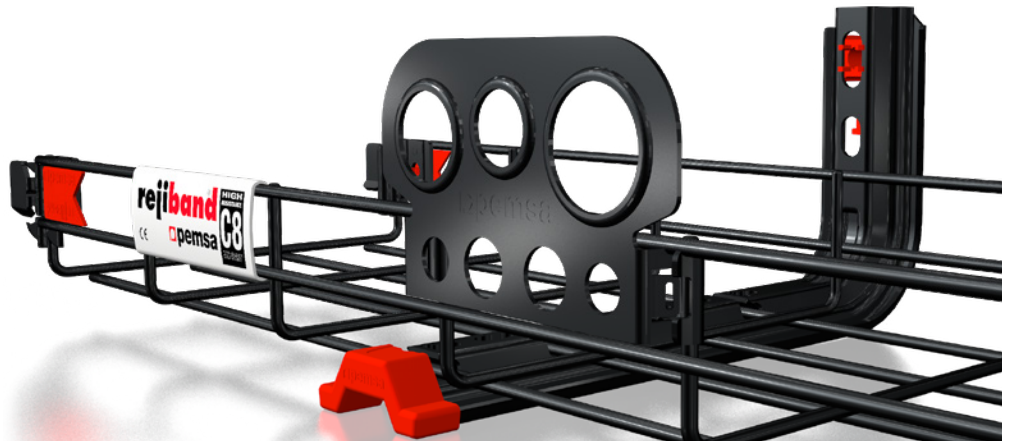
┌┐ • ⊗ 35-60-100-150 • ◀▶ 60-600			
Ref	kg/u	📦	
68000010	0,009	20	

┌┐ • ⊗ 35-60-100-150 • ◀▶ 60-600			
Ref	kg/u	📦	
68000002	0,140	1	

┌┐ • ⊗ 35-60-85-100 • ◀▶ 60-600					
Ⓢ	A	⊗	Ref	kg/m	📦
PG	25	35	67020610	0,212	60
	50	60	67020611	0,312	48
	80	100	67020612	0,444	36
AZ+	50	60	81000312	0,386	48
304	25	35	67050610	0,207	60
	50	60	67050611	0,305	48
	80	100	67050612	0,430	36
316L	25	35	67060610	0,207	60
	50	60	67060611	0,305	48
	80	100	67060612	0,430	36



Descubre en este video como instalar estos accesorios

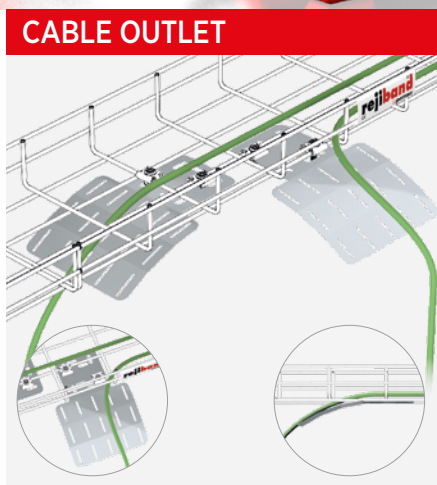


DATA OUTLET

Features

- Protects the radius and curvature of the cable.
- Optimum Bending Radius <50 mm.
- Suitable for UTP Cat and Fibre optic data cables.
- Fixing by quick mount click system.

35-60-100-150 • 60-600		
Ref	kg/u	📦
67020039	0,014	10

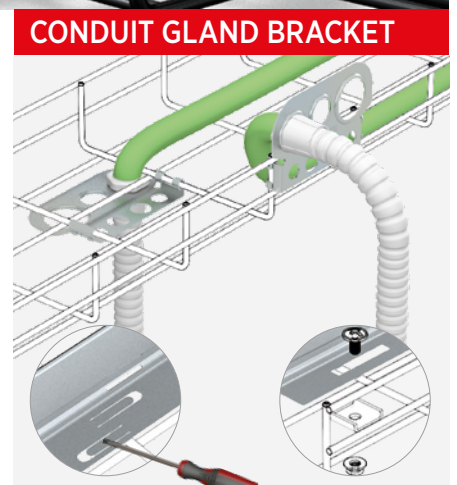


CABLE OUTLET

Features

- Protects the outlet of power and data cables.
- It allows for the angle to be adjusted between 0 and 90°.
- It has slots for the attachment of several cable bunches in parallel.
- Facilitates lateral cable management in cabinets or racks.

35-60-100-150 • 60-600			
📦	Ref	kg/u	📦
PG	67010016	0,132	1
GC	67030016	0,157	1
BK8	Consultar	0,135	1



CONDUIT GLAND BRACKET

Features

- Protects the cable outlet.
- Can be used with LG-PA and ST-PA PemsaFlex polyamide conduits.
- It accepts fittings in sizes of: PG13, PG16, PG21, M20 and M25.

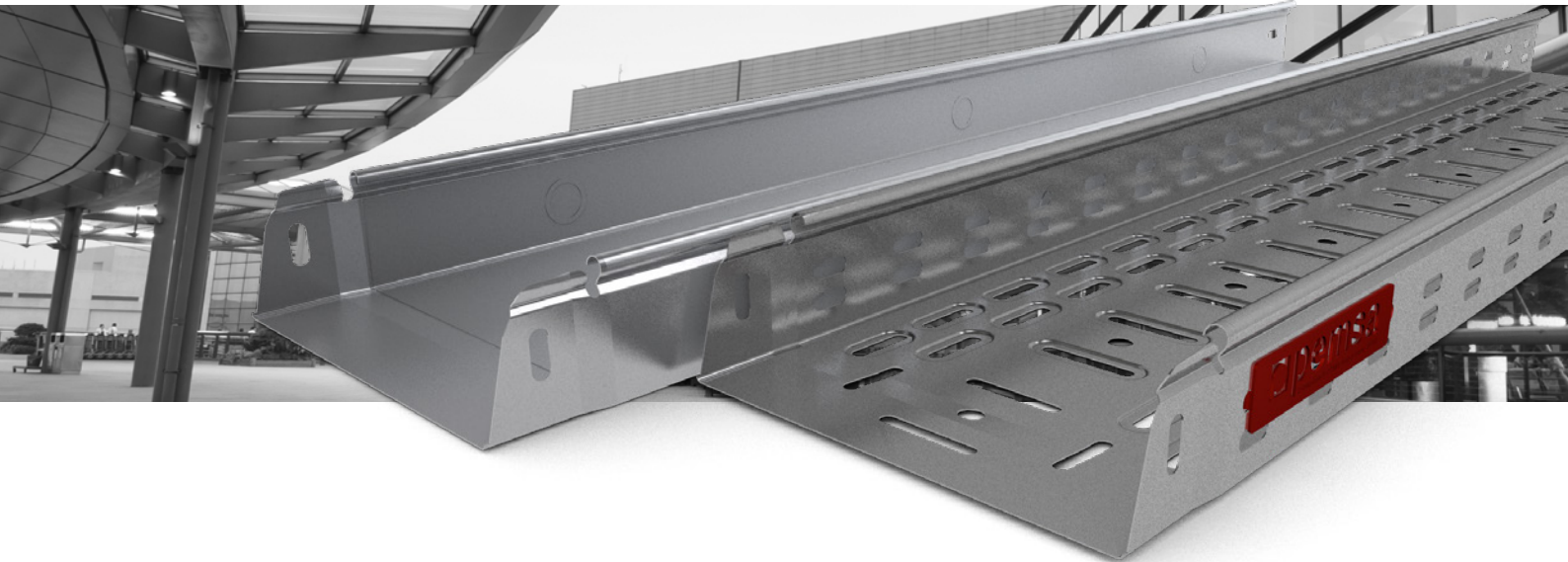
60-100-150 • 60-600			
📦	Ref	kg/u	📦
EZ	67010040	0,065	10
BK8	67080040	0,082	10

60-100-150 • 60-600				
📦	📦	Ref	kg/u	📦
EZ	M20, PG13, 1/2"	67010240	0,101	10
	M25, PG16, 3/4"	67010340	0,097	10
	M32, PG29, 1"	67010440	0,089	10
BK8	M20, PG13, 1/2"	67080240	0,101	10
	M25, PG16, 3/4"	67080340	0,097	10
	M32, PG29, 1"	67080440	0,089	10

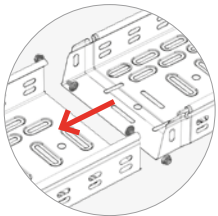


pemsa**band**[®] ||| **one**

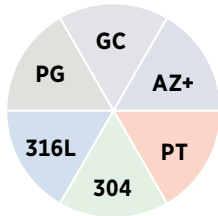
Perforated and solid metal sheet cable trays



ADVANTAGES AND FEATURES



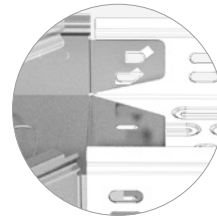
Quick Click Joint System click



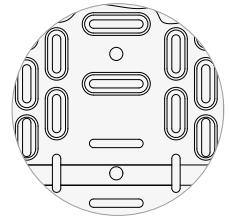
Wide range of protection systems



Safety edge. Protects and strengthens the cable tray



Universal Click System on Accessories. Compatible with all cable trays

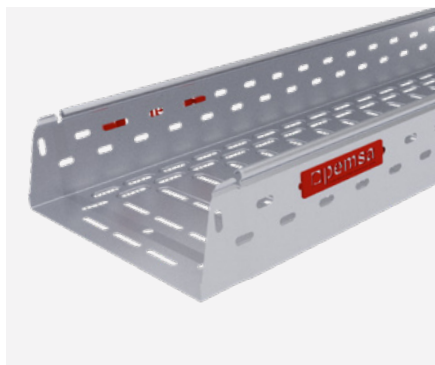


Perforated and embossed base increases the load capacity

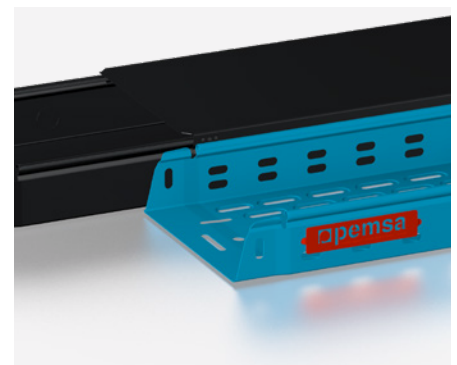
HIGHLIGHTS



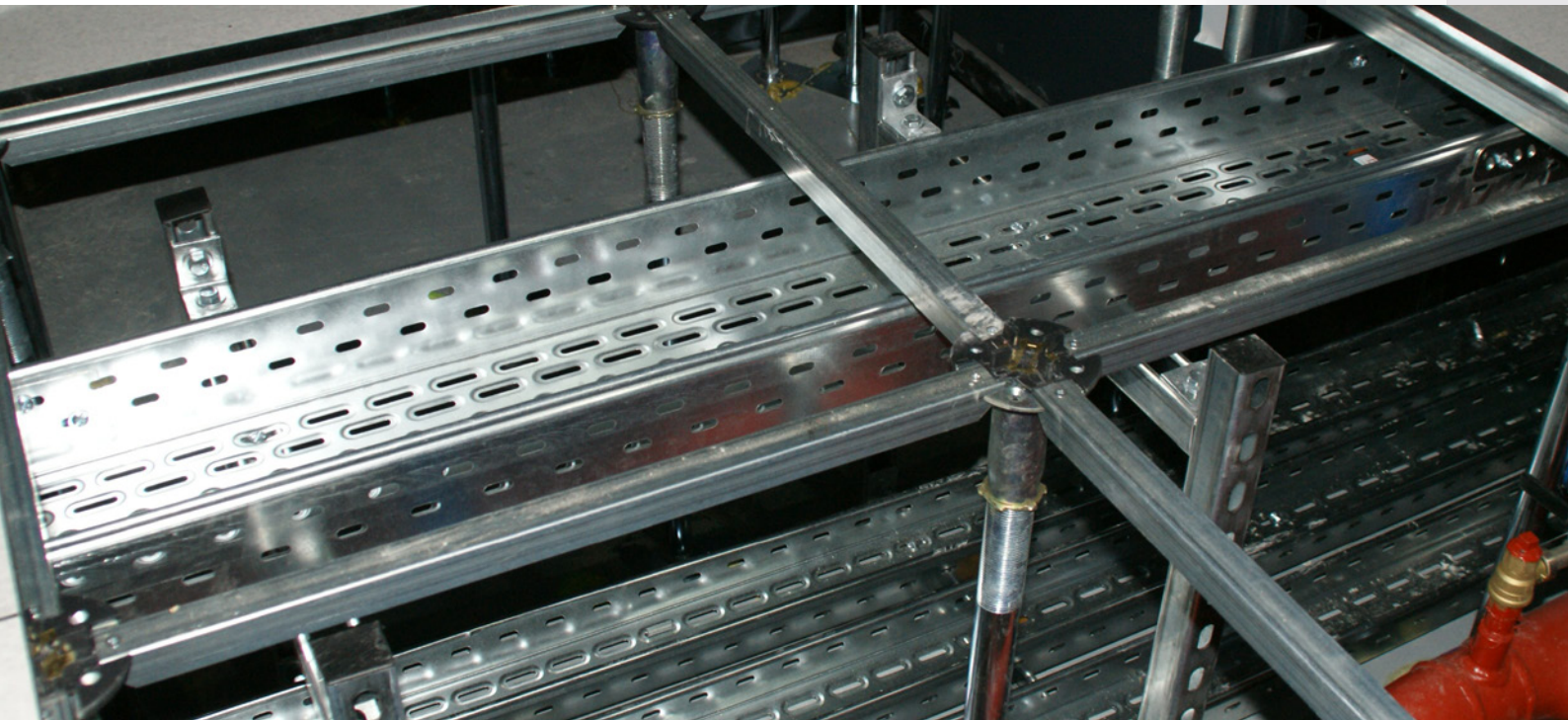
High resistance protection systems



Quick Click Joint System available in 100 mm height



Paint service on request, other RAL colours on demand.



INTERNAL DATA AND POWER CABLE MANAGEMENT.

EXTERNAL DATA AND POWER CABLE MANAGEMENT.



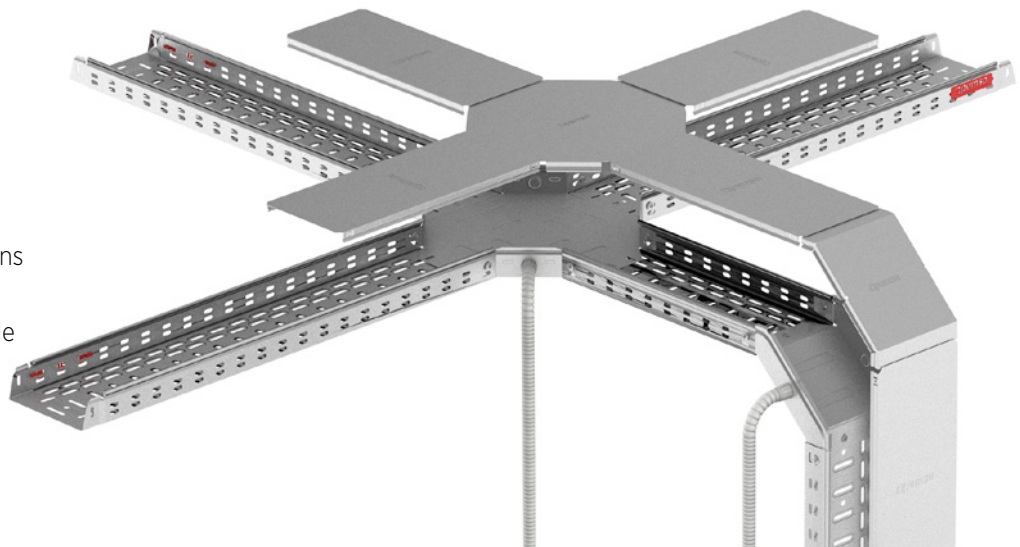
PG Protection system Pregalvanised

GC AZ+ Protection system Hot dip galvanising and AZ+

35, 60, 100 • 100-600 • 3000

System features

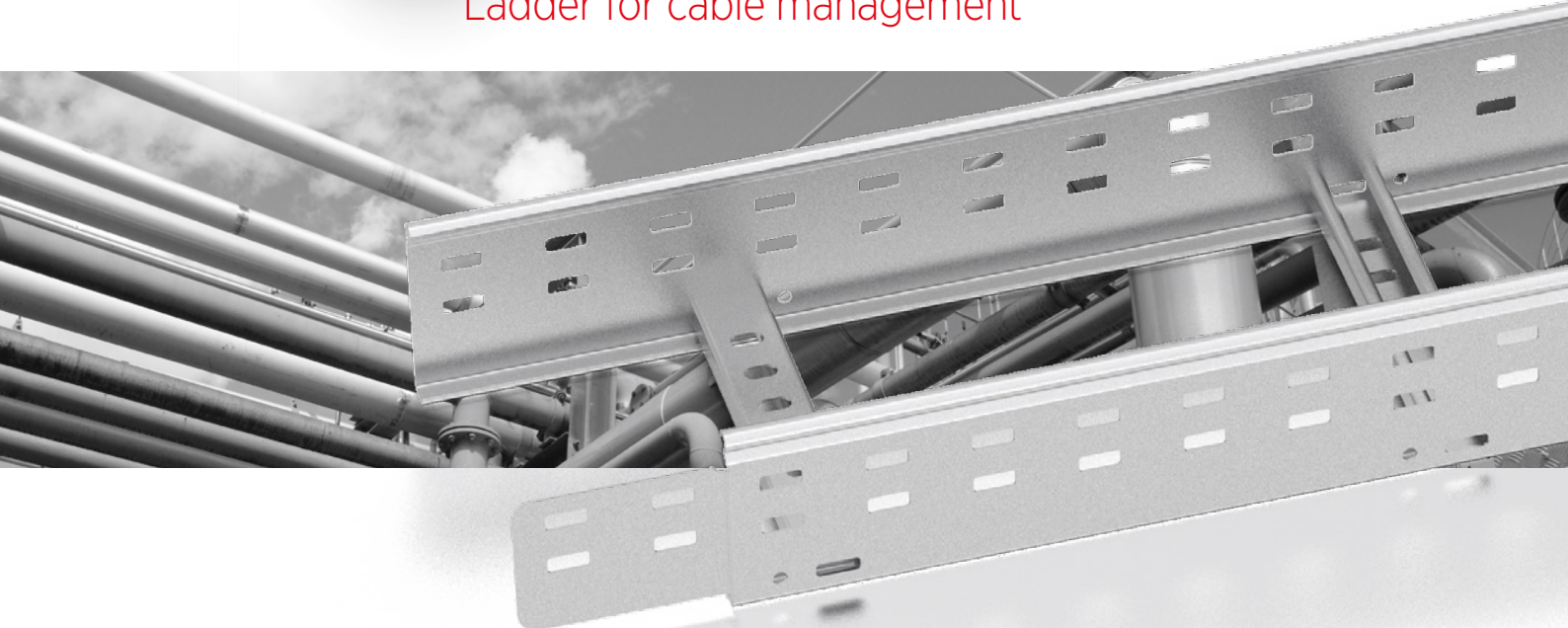
- PG Pre-galvanised protection systems, blocks the appearance of the Zinc whisker phenomenon
- GC and AZ+ high resistance protection systems. Suitable for outdoor installations in humid environments.
- Wide range of accessories for easy cable routing depending on the installation route



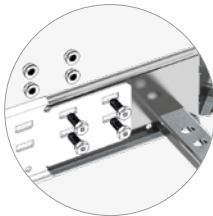


megaband®

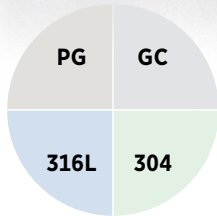
Ladder for cable management



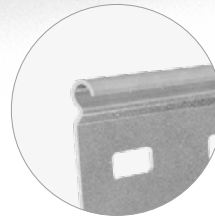
ADVANTAGES AND FEATURES



Quick Click Joint System 



Wide range of finishes and coatings

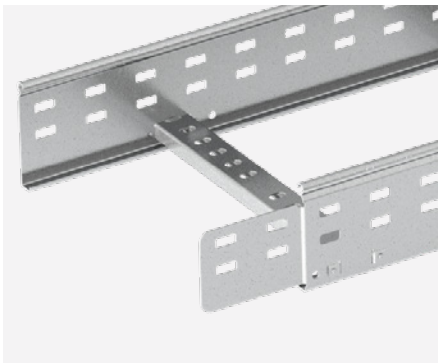


Safety edge. Protects and strengthens the cable Ladder

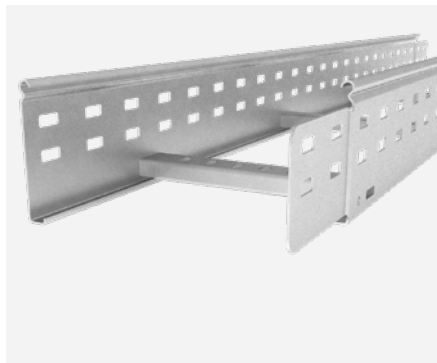


Quick Click Joint System on accessories

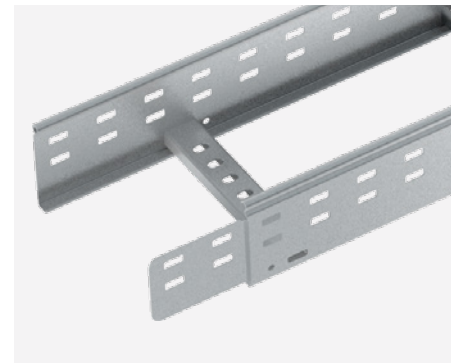
HIGHLIGHTS



Pre-Galvanised. New finish for internal installations



New 150 height. Load capacity increased

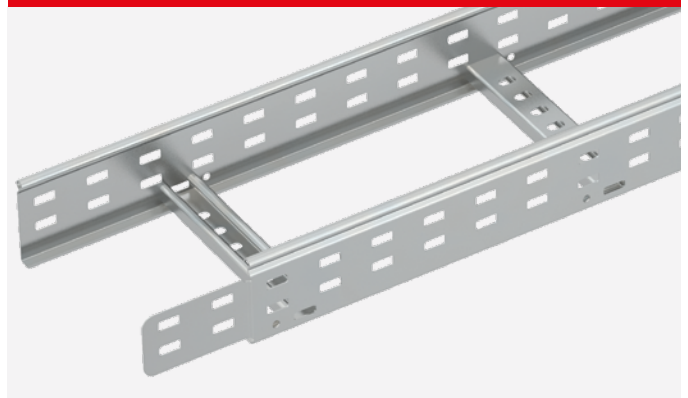
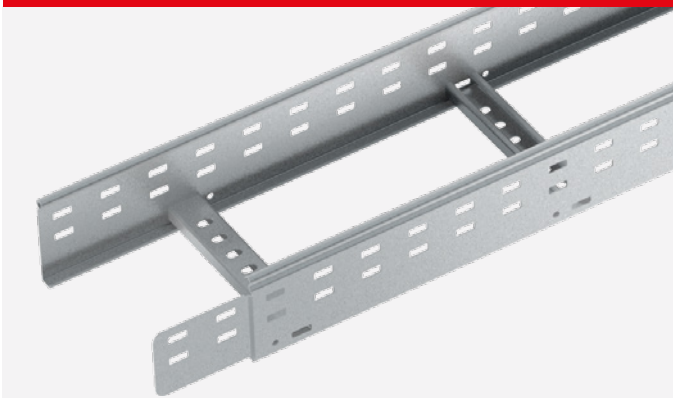


High resistance protection systems



INTERNAL DATA AND POWER CABLE MANAGEMENT

EXTERNAL DATA AND POWER CABLE MANAGEMENT



PG Protection system Pregalvanised

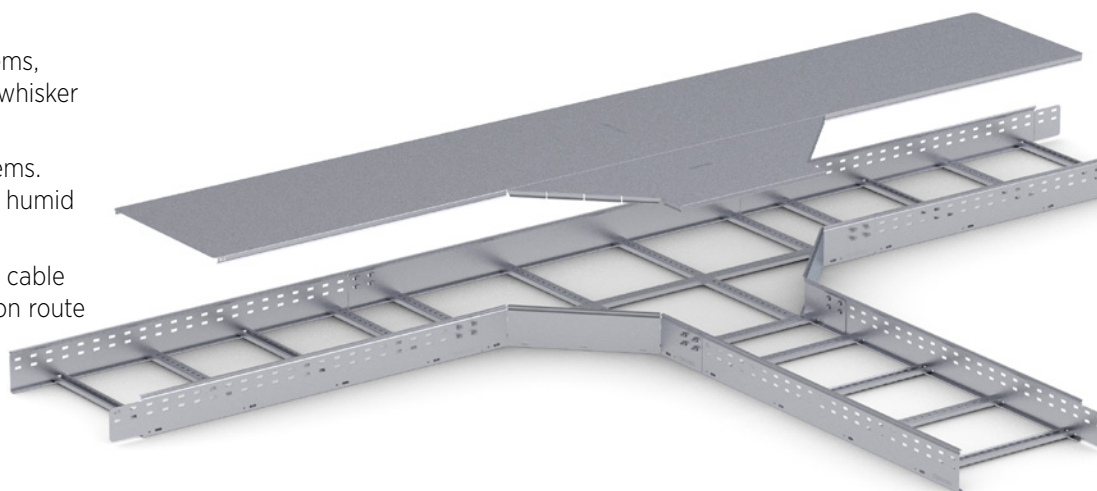
GC AZ+ Protection system Hot dip galvanising and AZ+



⊓ 60, 100 • ⊓ 100-900 • ⊓ 3000

System features

- PG Pre-galvanised protection systems, blocks the appearance of the Zinc whisker phenomenon
- GC high resistance protection systems. Suitable for outdoor installations in humid environments.
- Wide range of accessories for easy cable routing depending on the installation route





DATA CENTER JOB REFERENCES

Project	Location	Client
DATA CENTER EDGE SANT BOI	Sant Boi (Barcelona)	EDGE CONNEX
AMAZON NCL 2 (STOCKTON)	Billingham (UK)	AMAZON WS
AMAZON WEB SERVICES GERMANY DATA CENTER	Hof (Germany)	AMAZON WS
EQUINIX DB4 BLANCHARDSTOWN	Dublin (Ireland)	EQUINIX
NABIAX DATA CENTER	Alcalá de Henares (Madrid)	NABIAX
CPD MICROSOFT ALGETE MAD1 + MAD2	Algete (Madrid)	MICROSOFT
CPD - E-SHELTER - Las Rozas	Las Rozas (Madrid)	E-SHELTER, NTT
MD GOBLAL SWITCH	Madrid	GLOBAL SWITCH
AMAZON WEB SERVICES SPAIN DATA CENTER	Villanueva de Gállego (Huesca)	AMAZON WS
AMAZON WEB SERVICES SPAIN DATA CENTER	El Burgo de Ebro (Zaragoza)	AMAZON WS
GOOGLE DATA CENTER	Tokio (Japan)	GOOGLE
ENLARGEMENT GOOGLE DATA CENTER	Eemshaven (Netherlands)	GOOGLE
EQUINIX MADRID DATA CENTER MD2	Alcobendas (Madrid)	EQUINIX
EQUINIX MADRID DATA CENTER MD1	Alcobendas (Madrid)	EQUINIX
DPC TELEFONICA PHASE II (TIER IV)	Alcalá de Henares (Madrid)	MOVISTAR
CPD MAD1, MAD2, MAD3	Madrid	INTERXION
HEMEL HEMPSTEAD	U.K	-
EQUINIX DATA CENTER	Slough (U.K)	EQUINIX
WEB HOTEL DATA CENTER	Taastrup (Denmark)	GLOBAL CONNECT
CPD PORTUGAL TELECOM (TIER IV)	Covilha (Portugal)	PT TELECOM
DPC MAPFRE ASSUNRANCES (TIER IV)	Alcalá de Henares (Madrid)	MAPFRE
DPC TELEFONICA (TIER IV)	Alcalá de Henares (Madrid)	MOVISTAR
CPD VODAFONE	Madrid	VODAFONE
CPD INDRA	Albacete	INDRA
CPD BBVA Phase II	Tres Cantos (Madrid)	BBVA
CPD Banco Santander	Santander	SANTANDER
CPD Centro de Gestión de Alarmas de BBVA.	Tres Cantos (Madrid)	BBVA
CPD Campus BBVA La Moraleja	Alcobendas (Madrid)	BBVA

Conoces más en:



Cable Management Solutions